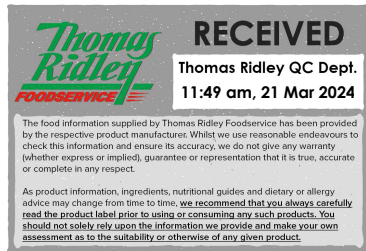


Changed Mar 21, 2024 10:30

Reviewed Mar 21, 2024 10:30

Erudus ID 72a5756befbf4c1f98eb1da1e91bc7b9

Version 2.0



**Thomas Ridley**  
FOODSERVICE

**RECEIVED**  
Thomas Ridley QC Dept.  
11:49 am, 21 Mar 2024

The food information supplied by Thomas Ridley Foodservice has been provided by the respective product manufacturers. Whilst we use reasonable endeavours to check this information and ensure its accuracy, we do not give any warranty (whether express or implied), guarantee or representation that it is true, accurate or complete in any respect.

As product information, ingredients, nutritional guides and dietary or allergy advice may change from time to time, we recommend that you always carefully read the product label prior to using or consuming any such products. You should not solely rely upon the information we provide and make your own assessment as to the suitability or otherwise of any given product.



47042

# POTATO GNOCCHI (Blue Line) - 10 bags x 1kg

Potato Gnocchi 10x1kg

## PRODUCT DESCRIPTION

IQF Potato Gnocchi

Brand	Surgital S.p.A
Manufacturer Product Code	F01
Effective Date	Mar 21, 2024
Product Type	Food
Product Category	Pasta, Rice and Noodles
Storage Type	Frozen
Erudus ID	72a5756befbf4c1f98eb1da1e91bc7b9
Specification Type	Generic



Inner Component GTIN	8006967000345
Manufacturer Component Code	F01
Outer Case GTIN	08006967006675



## INGREDIENTS

### Ingredient Declaration

potato puree 66% (water, potato flakes 23% (potato, emulsifier mono and di-glycerides of fatty acids, spices), potato starch), soft WHEAT flour "00", durum WHEAT semolina, corn starch, salt.  
Coated with rice flour on the surface.

## ALLERGENS

Product Contains:

<b>Celery/Celериac</b>	No	<b>Mustard</b>	May Contain
<b>Cereals Containing Gluten</b>	Yes	<b>Nuts (Tree)</b>	No
<b>Barley</b>	No	<b>Almond nuts</b>	No
<b>Oats</b>	No	<b>Brazil nuts</b>	No
<b>Rye</b>	No	<b>Cashew nuts</b>	No
<b>Wheat (including Spelt and Khorasan)</b>	Yes	<b>Hazelnuts</b>	No
<b>Crustacea</b>	No	<b>Macadamia (Queensland) nuts</b>	No
<b>Eggs</b>	No	<b>Pecan nuts</b>	No
<b>Fish</b>	No	<b>Pistachio nuts</b>	No
<b>Lupin</b>	No	<b>Walnuts</b>	No
<b>Milk</b>	No	<b>Peanuts</b>	No
<b>Molluscs</b>	No	<b>Sesame Seeds</b>	No
		<b>Soybeans</b>	May Contain
		<b>Sulphur Dioxide and Sulphites</b>	No

Risk Source:

**Additional Allergen Information**

MAY CONTAIN: SOY, MUSTARD

SUPPLEMENTARY  
INGREDIENT  
INFORMATION

<b>Palm Oil</b>	No
<b>Hydrogenated Vegetable Oil/Fat</b>	No
<b>GM Protein/DNA</b>	No

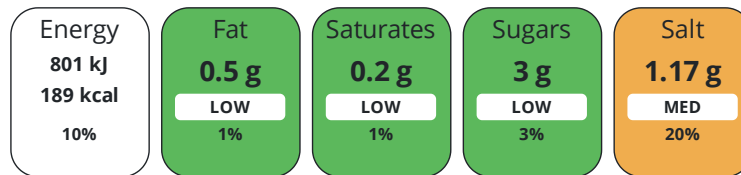
## ADDITIVES

*Product Contains:*

<b>Artificial Antioxidants</b>	No	<b>Artificial Flavourings</b>	No
<b>Artificial Colours</b>	No	<b>Artificial Preservatives</b>	No
<b>Artificial Flavour Enhancers</b>	No	<b>Artificial Sweeteners</b>	No
<b>Vegan Diet</b>	Suitable for	<b>Vegetarian Diet</b>	Suitable for
<b>Halal Diet</b>	No	<b>Kosher Diet</b>	No

DIET  
SUITABILITYNUTRITIONAL  
INFORMATION

Each 100g/ml portion contains:



of your reference intake.

Typical values per 100g/ml : Energy 189kcal / 801kj

Nutrient	per 100g	RI per 100g	per 180g serving	RI per 180g serving
<b>Energy (kJ)</b>	801 kJ	10%	1441.8 kJ	17%
<b>Energy (kcal)</b>	189 kcal	9%	340.2 kcal	17%
<b>Fat</b>	0.5 g	1%	0.9 g	1%
<b>of which Saturates</b>	0.2 g	1%	0.4 g	2%
<b>Carbohydrate</b>	39.6 g	15%	71.3 g	27%
<b>of which Sugars</b>	3 g	3%	5.4 g	6%
<b>Fibre</b>	2.6 g		4.7 g	
<b>Protein</b>	5.2 g	10%	9.4 g	19%
<b>Salt</b>	1.17 g	20%	2.1 g	35%
<b>Sodium</b>	460 mg		828 mg	
<b>Serving Size</b>	180 g			

SUPPLEMENTARY  
NUTRITIONAL  
INFORMATIONHANDLING &  
STORAGE  
INFORMATION**Directions For Use**

- Without defrosting, add the gnocchi to a pasta cooker full of boiling salted water - Once water returns to boil, cook pasta according to the cooking time recommended. Stir occasionally. - Drain the gnocchi; - Season to taste. For perfect gnocchi, always use one litre of boiling water for every 100g of product.

**Storage Instructions**

In the refrigerator: 1 day In the ice compartment: 3 days Ice compartment \* (-6°C): 1 week Ice compartment \*\* (-12°C): 1 month Ice compartment \*\*\* \*\*\*\* (-18°C): See date printed on the package Once defrosted the product must not be refrozen and must be consumed within 24 hours provided that it is kept in the refrigerator

<b>Shelf Life from Time of Production</b>	540 Days	<b>Exempt From Shelf Life Labelling</b>	No
---	----------	---	----

ACCREDITATIONS/  
CERTIFICATIONS/  
ASSURANCE  
SCHEMES  
ORIGIN

**BRCGS Certified**

**IFS Food Standard**

**ISO 14001 (Environmental Management)**

**Product Country of Origin/Place of** Italy

**Provenance**

PRODUCT  
CHARACTERISTICS

Standards Testing

**Do you undertake trend analysis of microbiological results?** Yes

**Is shelf life testing undertaken?** Yes

Microbiological Standards

Organism	Description	Frequency	Target	Maximum	Sample (g or ml)
Coliforms (cfu/g or ml)	cfu / g	Every 6 months	<1000	1000	1
E. Coli (cfu/g or ml)	cfu / g	Every 6 months	<10	10	1
Salmonella (cfu/g or ml)	absent in 25g	Every 6 months	<0	25	25
Aerobic Colony Count (ACC) (cfu/g or ml)	cfu / g	Every 6 months	<300	300	1
Coagulase-positive Staphylococci (cfu/g or ml)	cfu / g	Every 6 months	<100	100	1

CONFIGURATION

Case Configuration

Inner Pack Configuration

**Total Quantity of Inner Components in Outer Case** 10 Units

**Is the Outer Case Splittable?** Yes

PRODUCT  
WEIGHTS

Inner Component

**Variable Weight Consumer Item** No

**Inner Component Weight** 1 kg

Outer Case

**Outer Case Gross Weight** 10.25 kg

**Outer Case Net Weight** 10 kg

PRODUCT  
DIMENSIONS

Inner Component

**Inner Component Depth** 230 mm

**Inner Component Width** 265 mm

**Inner Component Height** 0 mm

Outer Case

**Outer Case Depth** 385 mm

**Outer Case Width** 230 mm

**Outer Case Height** 240 mm

PALLET  
INFORMATION

**Quantity of Cases Per Pallet Layer** 12 Cases

**Pallet Height** 2.6 MTR

**Quantity of Layers Per Pallet** 7 Layers

**Quantity of Cases Per Pallet** 84 Cases

PACKAGING

Inner Component Packaging

Type	Materials	Weight	Recycled Plastic %	Recyclable	Returnable	Composite
Bag	Plastic	108 g	- %			

Outer Case Packaging

Type	Materials	Weight	Recycled Plastic %	Recyclable	Returnable	Composite
Case	Plastic	108 g	- %			
Case	Paper/Cardboard	253 g	- %			

OTHER INFORMATION

<b>Intrastat/Taric Code</b>	19021990	<b>Value Added Tax Rate</b>	No VAT
-----------------------------	----------	-----------------------------	--------

**Manufacturer Comments**

Minimum order is as part of full pallet order. Lead time is from a Friday.

CONTACT INFORMATION

Address

Surgital S.p.A  
 16/1 Via Bastia 48017  
 Lavezzola (RA)  
 Emilia Romagna  
 48017  
 Italy

P: (Phone) +447786515906

The information on the [Erudus System](#) has been supplied by the manufacturers of the products and, whilst the owners of the Erudus System take steps to ensure the information is regularly updated, they give no warranty and no guarantee that the information is accurate. Product information and ingredients may change, please always read product labels carefully in addition to using the information provided by Erudus.

We do not accept liability for any inaccuracies or incorrect information contained on this site.  
 Please visit <http://www.erudus.com/terms-and-conditions> for full terms and conditions.