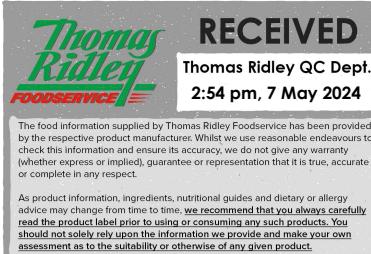


Changed May 03, 2024 15:44
Reviewed May 03, 2024 15:44
Erudus ID 2b27c2d44efe4a6587941025da51fdbd
Version 2.0



Thomas Ridley
FOODSERVICE

RECEIVED
Thomas Ridley QC Dept.
2:54 pm, 7 May 2024

The food information supplied by Thomas Ridley Foodservice has been provided by the respective product manufacturers. Whilst we use reasonable endeavours to check this information and ensure its accuracy, we do not give any warranty (whether express or implied), guarantee or representation that it is true, accurate or complete in any respect.

As product information, ingredients, nutritional guides and dietary or allergy advice may change from time to time, we recommend that you always carefully read the product label prior to using or consuming any such products. You should not solely rely upon the information we provide and make your own assessment as to the suitability or otherwise of any given product.



48122

Costa fine sea salt

Fine Sea Salt 10x750g

PRODUCT DESCRIPTION

fine sea salt

Brand	AB World
Manufacturer Product Code	190700
Effective Date	May 3, 2024
Product Type	Food
Product Category	Condiments
Storage Type	Ambient
Erudus ID	2b27c2d44efe4a6587941025da51fdbd
Specification Type	Generic



Inner Component GTIN	5010338197001
Outer Case GTIN	05015612197005



INGREDIENTS

Ingredient Declaration

Sea Salt, Anti-caking agent (Magnesium Oxide)

ALLERGENS

Product Contains:

Celery/Celeriac	No
Cereals Containing Gluten	No
Barley	No
Oats	No
Rye	No
Wheat (including Spelt and Khorasan)	No
Crustacea	No
Eggs	No
Fish	No
Lupin	No
Milk	No
Molluscs	No
Mustard	No
Nuts (Tree)	No
Almond nuts	No
Brazil nuts	No
Cashew nuts	No
Hazelnuts	No
Macadamia (Queensland) nuts	No
Pecan nuts	No
Pistachio nuts	No
Walnuts	No
Peanuts	No
Sesame Seeds	No
Soybeans	No
Sulphur Dioxide and Sulphites	No

SUPPLEMENTARY INGREDIENT INFORMATION

Palm Oil	No
Hydrogenated Vegetable Oil/Fat	No
GM Protein/DNA	No

ADDITIVES

Product Contains:

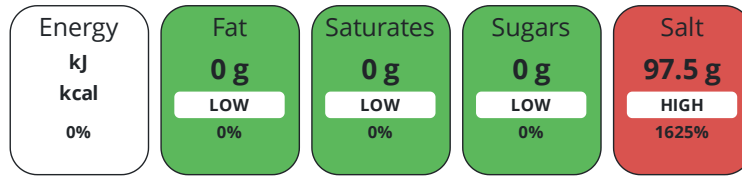
Artificial Antioxidants	No
Artificial Colours	No
Artificial Flavour Enhancers	No
Artificial Flavourings	No
Artificial Preservatives	No
Artificial Sweeteners	No

DIET SUITABILITY

Vegan Diet	Suitable for	Vegetarian Diet	Suitable for
Halal Diet	No	Kosher Diet	No

NUTRITIONAL INFORMATION

Each 100g/ml portion contains:



of your reference intake.

Typical values per 100g/ml : Energy kcal / kj

Nutrient	per 100g/ml	RI per 100g/ml
Energy (kj)	0 kj	0%
Energy (kcal)	0 kcal	0%
Fat	0 g	0%
of which Saturates	0 g	0%
of which Mono-unsaturates	0 g	
of which Polyunsaturates	0 g	
Carbohydrate	0 g	0%
of which Sugars	0 g	0%
Fibre	0 g	
Protein	0 g	0%
Salt	97.5 g	1625%
Sodium	0 mg	
Exempt from Nutrition Labelling		Yes

VITAMINS AND MINERALS

Nutrient	per 100g/ml	RI per 100g/ml
Vitamin A	0 µg	0%
Vitamin C	0 mg	0%
Folate/Folic Acid	0 µg	0%
Calcium	0 mg	0%
Iron	0 mg	0%
Zinc	0 mg	0%

SUPPLEMENTARY NUTRITIONAL INFORMATION

Cholesterol per 100 g/ml (UK/FR)	0 g
Trans Fats per 100 g/ml	0 g
Fat Percentage in Dry Matter per 100 g/ml	0 %
Non Milk Extrinsic Sugars per 100 g/ml	0 g

HANDLING & STORAGE INFORMATION

Directions For Use

Ready to use

Storage Instructions

Store in a cool dry place

Storage Instructions After Opening

Store in a cool, dry place

Shelf Life from Time of Production

3650 Days

Exempt From Shelf Life Labelling

Yes

ACCREDITATIONS/ CERTIFICATIONS/ ASSURANCE SCHEMES

IFS Food Standard**Other Accreditation**

ORIGIN

Product Country of Origin/Place of

France

Provenance**Additional Origin Details**

France

PRODUCT CHARACTERISTICS

Standards Testing

Do you undertake trend analysis of microbiological results?

No

Is shelf life testing undertaken?

No

Commercially Sterile

No

Analytical Standards

Test	Description	Frequency	Target	Range	Sample (g or ml)
Moisture (%)		Monthly	=0.05	0.05 to 0.05	750
Salt Content (%)		Monthly	=98	98 to 98	750

CONFIGURATION

Case Configuration

Total Quantity of Inner Components in Outer Case

10 Units

Is the Outer Case Splittable?

Yes

Inner Pack Configuration

PRODUCT WEIGHTS

Inner Component

Variable Weight Consumer Item

No

Inner Component Weight

750 g

Net Drained Weight

0 g

Inner Pack

Inner Pack Gross Weight

795 g

Inner Pack Net Weight

750 g

Outer Case

Outer Case Gross Weight

8 kg

Outer Case Net Weight

7.5 kg

PRODUCT DIMENSIONS

Inner Component

Inner Component Depth	70 mm
Inner Component Width	70 mm
Inner Component Height	205 mm
Inner Pack	
Inner Pack Depth	70 mm

Outer Case

Outer Case Depth	360 mm
Outer Case Width	150 mm
Outer Case Height	205 mm

PALLET INFORMATION

Quantity of Cases Per Pallet Layer	22 Cases
Quantity of Layers Per Pallet	5 Layers
Quantity of Cases Per Pallet	110 Cases
Pallet Height	1.2 MTR
Pallet Gross Weight	910 kg

PACKAGING

Inner Component Packaging

Type	Materials	Weight	Recycled Plastic %	Recyclable	Returnable	Composite
Cylinder	Paper/Cardboard	36.5 g	- %	Yes		
Cap	Plastic	14 g	- %			

Outer Case Packaging

Type	Materials	Weight	Recycled Plastic %	Recyclable	Returnable	Composite
Case	Plastic	19 g	- %	Yes		
Case	Paper/Cardboard	27.5 g	- %			

Transport Packaging

Type	Materials	Weight	Recycled Plastic %	Recyclable	Returnable	Composite
Other	Plastic	450 g	- %			
Other	Paper/Cardboard	137 g	- %			
Other	Wood	25000 g	- %			

OTHER INFORMATION

Manufacturer Comments

N/a

CONTACT INFORMATION

Address

AB World
Kiriana House,
Kiribati Way,
Leigh,
Lancashire,
WN7 5RS
England

P: (Phone) 01942 267000

The information on the [Erudus System](#) has been supplied by the manufacturers of the products and, whilst the owners of the Erudus System take steps to ensure the information is regularly updated, they give no warranty and no guarantee that the information is accurate. Product information and ingredients may change, please always read product labels carefully in addition to using the information provided by Erudus.

We do not accept liability for any inaccuracies or incorrect information contained on this site.
Please visit <http://www.erudus.com/terms-and-conditions> for full terms and conditions.