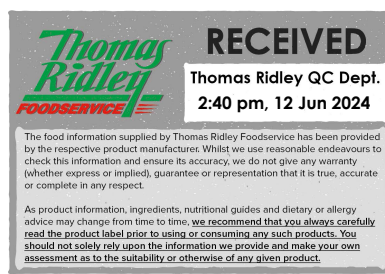


Changed Jun 11, 2024 15:18

Reviewed Jun 11, 2024 15:18

Erudus ID cab64ad570c0490fa73d741533268673

Version 2.0



49132

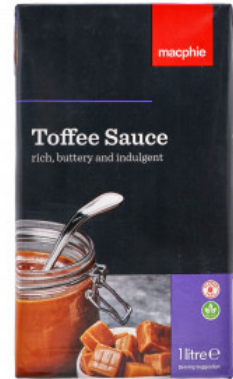
Toffee Sauce 12 x 1L

Toffee Sauce 12x1164g

PRODUCT DESCRIPTION

A rich heat treated toffee sauce made with a blend of cream, sugar and butter (7%).

Brand	Macphie Ltd
Manufacturer Product Code	10000155
Product Type	Food
Product Category	Sauces & Dips
Storage Type	Ambient
Erudus ID	cab64ad570c0490fa73d741533268673
Specification Type	Generic



Inner Component GTIN	5017506801654
Outer Case GTIN	05017506471659



INGREDIENTS

Ingredient Declaration

Reconstituted Skimmed MILK, Sugar, Butter (7%) (MILK), Water, Dextrose, Double Cream (MILK), Modified Starch, Dried Glucose Syrup, Dried Caramelised Sugar, Flavouring, Emulsifier (Mono-and diglycerides of fatty acids).

ALLERGENS

Product Contains:

Celery/Celериac	No	Mustard	No
Cereals Containing Gluten	No	Nuts (Tree)	No
Barley	No	Almond nuts	No
Oats	No	Brazil nuts	No
Rye	No	Cashew nuts	No
Wheat (including Spelt and Khorasan)	No	Hazelnuts	No
Crustacea	No	Macadamia (Queensland) nuts	No
Eggs	No	Pecan nuts	No
Fish	No	Pistachio nuts	No
Lupin	No	Walnuts	No
Milk	Yes	Peanuts	No
Molluscs	No	Sesame Seeds	No
		Soybeans	No
		Sulphur Dioxide and Sulphites	No

Additional Allergen Information

Contains: MILK

SUPPLEMENTARY
INGREDIENT
INFORMATION

Palm Oil	Yes
Hydrogenated Vegetable Oil/Fat	No
GM Protein/DNA	No

ADDITIVES

Product Contains:

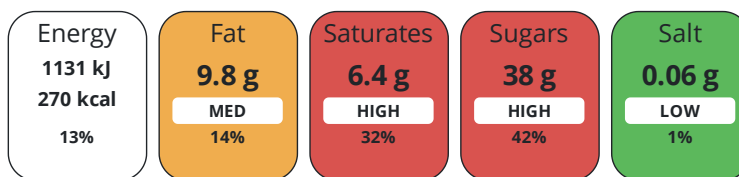
Artificial Antioxidants	No	Artificial Flavourings	No
Artificial Colours	No	Artificial Preservatives	No
Artificial Flavour Enhancers	No	Artificial Sweeteners	No

DIET
SUITABILITY

Vegan Diet	No	Vegetarian Diet	Suitable for
Halal Diet	No	Kosher Diet	No

NUTRITIONAL
INFORMATION

Each 100g/ml portion contains:



of your reference intake.

Typical values per 100g/ml : Energy 270kcal / 1131kJ

Nutrient	per 100ml	RI per 100ml
Energy (kJ)	1131 kJ	13%
Energy (kcal)	270 kcal	14%
Fat	9.8 g	14%
of which Saturates	6.4 g	32%
Carbohydrate	43 g	17%
of which Sugars	38 g	42%
Protein	2.1 g	4%
Salt	0.06 g	1%

SUPPLEMENTARY
NUTRITIONAL
INFORMATION

HANDLING &
STORAGE
INFORMATION

Directions For Use

Please see technical information sheet. Available at Macphie.com.

Storage Instructions

Unopened, store in cool, dry hygienic environment (<20oC). Opened, store in hygienic chill. Shelf life opened: 7 days.

Shelf Life from Time of Production 365 Days

ACCREDITATIONS/
CERTIFICATIONS/
ASSURANCE
SCHEMES
ORIGIN

BRCGS Certified **Roundtable of Sustainable Palm Oil (RSPO)**

Other Accreditation

Product Country of Origin/Place of United Kingdom

Provenance

Additional Origin Details

Scotland

PRODUCT
CHARACTERISTICS

Standards Testing

CONFIGURATION	Case Configuration		Inner Pack Configuration				
	Total Quantity of Inner Components in Outer Case	12 Units					
	Is the Outer Case Splittable?	No					
PRODUCT WEIGHTS	Inner Component						
	Variable Weight Consumer Item	No					
	Inner Component Weight	1164 g					
	Outer Case						
	Outer Case Gross Weight	14.41 kg					
	Outer Case Net Weight	13.97 kg					
PRODUCT DIMENSIONS	Inner Component						
	Inner Component Depth	94 mm					
	Inner Component Width	60 mm					
	Inner Component Height	165 mm					
	Outer Case						
	Outer Case Depth	208 mm					
	Outer Case Width	402 mm					
	Outer Case Height	170 mm					
	PALLET INFORMATION	Quantity of Cases Per Pallet Layer	15 Cases	Pallet Height	0.98 MTR		
Quantity of Layers Per Pallet		5 Layers	Pallet Gross Weight	1111.71 kg			
Quantity of Cases Per Pallet		75 Cases					
PACKAGING	Inner Component Packaging						
	Type	Materials	Weight	Recycled Plastic %	Recyclable	Returnable	Composite
	Tetra Pack	Plastic	4.5 g	- %			
	Tetra Pack	Paper/Cardboard	21 g	- %			
	Tetra Pack	Aluminium	1.3 g	- %			
	Outer Case Packaging						
	Type	Materials	Weight	Recycled Plastic %	Recyclable	Returnable	Composite
	Case	Plastic	51 g	- %			
	Case	Paper/Cardboard	65 g	- %			
	Transport Packaging						
	Type	Materials	Weight	Recycled Plastic %	Recyclable	Returnable	Composite
	Other	Plastic	514 g	- %		Yes	
	Other	Paper/Cardboard	448 g	- %		Yes	
	Other	Wood	30000 g	- %		Yes	
	OTHER INFORMATION	Commodity Code	2103909089				
		Manufacturer Comments					

For microbiological & analytical data please be advised this product is commercially sterile and free from all viable micro-organisms until opened.

CONTACT
INFORMATION

Address

Macphie Ltd
Glenbervie
Stonehaven
AB39 3YG
Scotland

P. (Phone) 01569 740641

The information on the [Erudus System](#) has been supplied by the manufacturers of the products and, whilst the owners of the Erudus System take steps to ensure the information is regularly updated, they give no warranty and no guarantee that the information is accurate. Product information and ingredients may change, please always read product labels carefully in addition to using the information provided by Erudus.

We do not accept liability for any inaccuracies or incorrect information contained on this site.
Please visit <http://www.erudus.com/terms-and-conditions> for full terms and conditions.