


Changed Mar 12, 2024 00:00

Reviewed Mar 11, 2024 10:09

Erudus ID acda159658814a12997056648582b4e7

Version 2.0




RECEIVED

Thomas Ridley QC Dept.  
10:21 am, 12 Mar 2024

The food information supplied by Thomas Ridley Foodservice has been provided by the respective product manufacturer. Whilst we use reasonable endeavours to check this information and ensure its accuracy, we do not give any warranty (whether express or implied), guarantee or representation that it is true, accurate or complete in any respect.

As product information, ingredients, nutritional guides and dietary or allergy advice may change from time to time, we recommend that you always carefully read the product label prior to using or consuming any such products. You should not solely rely upon the information we provide and make your own assessment as to the suitability or otherwise of any given product.



50001

# Canderel Yellow drums 2 x 500g

Canderel Yellow 2x500g

## PRODUCT DESCRIPTION

Sucralose based table top sweetener in 500g

Brand	Portion Solutions Ltd
Manufacturer Product Code	70103752
Effective Date	Mar 11, 2024
Product Type	Food
Product Category	Sugar and Sweeteners
Storage Type	Ambient
Erudus ID	acda159658814a12997056648582b4e7
Specification Type	Generic

Inner Component GTIN 5050415035086



## INGREDIENTS

### Ingredient Declaration

Maltodextrin, Sweetener: Sucralose (0.98%).

## ALLERGENS

Product Contains:

<b>Celery/Celeriac</b>	No	<b>Mustard</b>	No
<b>Cereals Containing Gluten</b>	No	<b>Nuts (Tree)</b>	No
<b>Barley</b>	No	<b>Almond nuts</b>	No
<b>Oats</b>	No	<b>Brazil nuts</b>	No
<b>Rye</b>	No	<b>Cashew nuts</b>	No
<b>Wheat (including Spelt and Khorasan)</b>	No	<b>Hazelnuts</b>	No
<b>Crustacea</b>	No	<b>Macadamia (Queensland) nuts</b>	No
<b>Eggs</b>	No	<b>Pecan nuts</b>	No
<b>Fish</b>	No	<b>Pistachio nuts</b>	No
<b>Lupin</b>	No	<b>Walnuts</b>	No
<b>Milk</b>	No	<b>Peanuts</b>	No
<b>Molluscs</b>	No	<b>Sesame Seeds</b>	No
		<b>Soybeans</b>	No
		<b>Sulphur Dioxide and Sulphites</b>	No

## SUPPLEMENTARY INGREDIENT INFORMATION

<b>Palm Oil</b>	No
<b>Hydrogenated Vegetable Oil/Fat</b>	No
<b>GM Protein/DNA</b>	No

## ADDITIVES

Product Contains:

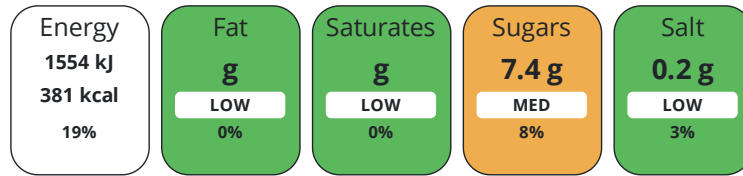
<b>Artificial Antioxidants</b>	No	<b>Artificial Flavourings</b>	No
<b>Artificial Colours</b>	No	<b>Artificial Preservatives</b>	No
<b>Artificial Flavour Enhancers</b>	No	<b>Artificial Sweeteners</b>	Yes

DIET  
SUITABILITY

<b>Vegan Diet</b>	Suitable for	<b>Vegetarian Diet</b>	Suitable for
<b>Halal Diet</b>	No	<b>Kosher Diet</b>	No

NUTRITIONAL  
INFORMATION

Each 100g/ml portion contains:



of your reference intake.

Typical values per 100g/ml : Energy 381kcal / 1554kJ

Nutrient	per 100g	RI per 100g
<b>Energy (kJ)</b>	1554 kJ	19%
<b>Energy (kcal)</b>	381 kcal	19%
<b>Fat</b>	0 g	0%
<b>of which Saturates</b>	0 g	0%
<b>Carbohydrate</b>	95 g	37%
<b>of which Sugars</b>	7.4 g	8%
<b>Fibre</b>	0 g	
<b>Protein</b>	0 g	0%
<b>Salt</b>	0.2 g	3%

SUPPLEMENTARY  
NUTRITIONAL  
INFORMATION

HANDLING &  
STORAGE  
INFORMATION

**Directions For Use**

For baking

**Storage Instructions**

Store in a cool, dry place, away from direct sunlight

<b>Shelf Life from Time of Production</b>	1095 Days	<b>Exempt From Shelf Life Labelling</b>	No
---	-----------	---	----

ACCREDITATIONS/  
CERTIFICATIONS/  
ASSURANCE  
SCHEMES



ORIGIN

**Product Country of Origin/Place of** Czech Republic

**Provenance**

PRODUCT  
CHARACTERISTICS

Standards Testing

<b>Do you undertake trend analysis of microbiological results?</b>	No	<b>Is shelf life testing undertaken?</b>	No
--	----	--	----

CONFIGURATION

Case Configuration

Inner Pack Configuration

**Total Quantity of Inner Components in Outer Case** 2 Units

**Is the Outer Case Splittable?** No

PRODUCT WEIGHTS

Inner Component	
<b>Variable Weight Consumer Item</b>	No
<b>Inner Component Weight</b>	500 g
<b>e mark</b>	Yes
Outer Case	
<b>Outer Case Gross Weight</b>	1.64 kg
<b>Outer Case Net Weight</b>	1 kg

PRODUCT DIMENSIONS

Inner Component	
<b>Inner Component Depth</b>	0 mm
<b>Inner Component Width</b>	153 mm
<b>Inner Component Height</b>	250 mm
Outer Case	
<b>Outer Case Depth</b>	0 mm
<b>Outer Case Width</b>	153 mm
<b>Outer Case Height</b>	250 mm

PALLET INFORMATION

<b>Quantity of Cases Per Pallet Layer</b>	17 Cases	<b>Pallet Height</b>	1.2 MTR
<b>Quantity of Layers Per Pallet</b>	4 Layers		
<b>Quantity of Cases Per Pallet</b>	68 Cases		

PACKAGING

Inner Component Packaging						
Type	Materials	Weight	Recycled Plastic %	Recyclable	Returnable	Composite
Can	Plastic	23 g	- %			
Can	Aluminium	100 g	- %			
Outer Case Packaging						
Type	Materials	Weight	Recycled Plastic %	Recyclable	Returnable	Composite
Paper/Polyethylene	Plastic	92 g	- %			
Paper/Polyethylene	Paper/Cardboard	50 g	- %			
Transport Packaging						
Type	Materials	Weight	Recycled Plastic %	Recyclable	Returnable	Composite
Other	Wood	30000 g	- %		Yes	

OTHER INFORMATION

CONTACT  
INFORMATION

Address

Portion Solutions Ltd  
Hortonwood 40  
Telford  
Shropshire  
TF1 7EY  
England

P: (Phone) 0044 (0)1952 234100

Complaints Contact

Managed Account (non-conformance)  
nonconformance@portionsolutions.co.uk

P: (Phone) 01952234100

Technical Contact

Magdalena Piekielek  
Head of Technical, Health & Safety  
Magdalena.piekielek@portionsolutions.co.uk

P: (Phone) 01952979102

Commercial Contact

Luke Thompson  
Account Manager  
luke.thompson@portionsolutions.co.uk

P: (Phone) 07764987561

The information on the [Erudus System](#) has been supplied by the manufacturers of the products and, whilst the owners of the Erudus System take steps to ensure the information is regularly updated, they give no warranty and no guarantee that the information is accurate. Product information and ingredients may change, please always read product labels carefully in addition to using the information provided by Erudus.

We do not accept liability for any inaccuracies or incorrect information contained on this site.  
Please visit <http://www.erudus.com/terms-and-conditions> for full terms and conditions.