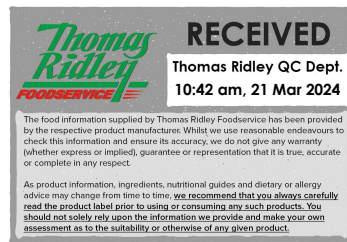


Changed Mar 20, 2024 16:53

Reviewed Mar 20, 2024 16:53

Erudus ID dd84bc2a86ed46a7a0885e2751ebf246

Version 2.0



50141

# NESCAFE ORIGINAL 6x500g

Nescafe Original Powder 500g 6x500g

## PRODUCT DESCRIPTION

Soluble Coffee

Brand	Nestle UK
Manufacturer Product Code	12533637
Product Type	Drink
Product Category	Tea & Coffee
Storage Type	Ambient
Erudus ID	dd84bc2a86ed46a7a0885e2751ebf246
Specification Type	Drinks



Inner Component GTIN	7613035422209
Outer Case GTIN	7613035422216



## INGREDIENTS

### Ingredient Declaration

Soluble coffee

## ALLERGENS

Product Contains:

<b>Celery/Celериac</b>	No	<b>Mustard</b>	No
<b>Cereals Containing Gluten</b>	No	<b>Nuts (Tree)</b>	No
<b>Barley</b>	No	<b>Almond nuts</b>	No
<b>Oats</b>	No	<b>Brazil nuts</b>	No
<b>Rye</b>	No	<b>Cashew nuts</b>	No
<b>Wheat (including Spelt and Khorasan)</b>	No	<b>Hazelnuts</b>	No
<b>Crustacea</b>	No	<b>Macadamia (Queensland) nuts</b>	No
<b>Eggs</b>	No	<b>Pecan nuts</b>	No
<b>Fish</b>	No	<b>Pistachio nuts</b>	No
<b>Lupin</b>	No	<b>Walnuts</b>	No
<b>Milk</b>	No	<b>Peanuts</b>	No
<b>Molluscs</b>	No	<b>Sesame Seeds</b>	No
		<b>Soybeans</b>	No
		<b>Sulphur Dioxide and Sulphites</b>	No
<b>Supplementary Ingredient Information</b>			
<b>Palm Oil</b>	No		
<b>Hydrogenated Vegetable Oil/Fat</b>	No		
<b>GM Protein/DNA</b>	No		

ADDITIVES

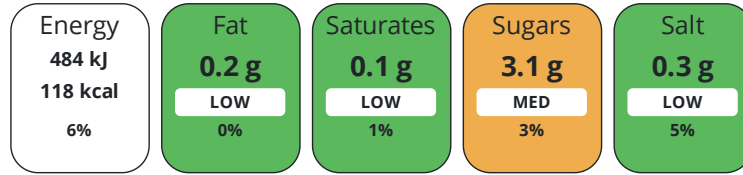
Product Contains:

<b>Artificial Antioxidants</b>	No	<b>Artificial Flavourings</b>	No
<b>Artificial Colours</b>	No	<b>Artificial Preservatives</b>	No
<b>Artificial Flavour Enhancers</b>	No	<b>Artificial Sweeteners</b>	No
<b>Vegan Diet</b>	Suitable for	<b>Vegetarian Diet</b>	Suitable for
<b>Halal Diet</b>	Certified	<b>Kosher Diet</b>	Certified

DIET SUITABILITY

NUTRITIONAL INFORMATION

Each 100g/ml portion contains:



of your reference intake.

Typical values per 100g/ml : Energy 118kcal / 484kj

Nutrient	per 100g	RI per 100g
<b>Energy (kJ)</b>	484 kJ	6%
<b>Energy (kcal)</b>	118 kcal	6%
<b>Fat</b>	0.2 g	0%
<b>of which Saturates</b>	0.1 g	1%
<b>Carbohydrate</b>	3.1 g	1%
<b>of which Sugars</b>	3.1 g	3%
<b>Fibre</b>	34.1 g	
<b>Protein</b>	7.8 g	16%
<b>Salt</b>	0.3 g	5%

SUPPLEMENTARY NUTRITIONAL INFORMATION

HFSS (HIGH IN FAT, SALT AND SUGAR)

<b>HFSS Status</b>	No
--------------------	----

HANDLING & STORAGE INFORMATION

**Directions For Use**

For The Perfect Serve Always use a dry measure and freshly boiled water (not boiling hot) 1 rounded teaspoon (minimum 1.8g) + 200ml water per mug. 1 rounded teaspoon (minimum 6g) per pint

**Storage Instructions**

Store in a cool, dry place

<b>Shelf Life from Time of Production</b>	720 Days	<b>Exempt From Shelf Life Labelling</b>	No
---	----------	---	----

ACCREDITATIONS/ CERTIFICATIONS/ ASSURANCE SCHEMES ORIGIN

<b>FSSC 22000</b>	<b>ISO 14001 (Environmental Management)</b>
-------------------	---

<b>Product Country of Origin/Place of Provenance</b>	United Kingdom
--	----------------

PRODUCT CHARACTERISTICS

Standards Testing			
<b>Do you undertake trend analysis of microbiological results?</b>	No	<b>Is shelf life testing undertaken?</b>	No

CONFIGURATION	Case Configuration		Inner Pack Configuration				
	<b>Total Quantity of Inner Components in Outer Case</b>	6 Units					
	<b>Is the Outer Case Splittable?</b>	No					
PRODUCT WEIGHTS	Inner Component						
	<b>Inner Component Weight</b>	500 g					
	Outer Case						
	<b>Outer Case Gross Weight</b>	4.44 kg					
	<b>Outer Case Net Weight</b>	3 kg					
PRODUCT DIMENSIONS	Inner Component						
	<b>Inner Component Depth</b>	210 mm					
	<b>Inner Component Width</b>	108 mm					
	<b>Inner Component Height</b>	136 mm					
	Outer Case						
	<b>Outer Case Depth</b>	424 mm					
	<b>Outer Case Width</b>	323 mm					
	<b>Outer Case Height</b>	137 mm					
PALLET INFORMATION	<b>Quantity of Cases Per Pallet Layer</b>	8 Cases	<b>Pallet Height</b>	1.3 MTR			
	<b>Quantity of Layers Per Pallet</b>	8 Layers	<b>Pallet Gross Weight</b>	315 kg			
	<b>Quantity of Cases Per Pallet</b>	64 Cases					
PACKAGING	Inner Component Packaging						
	<b>Type</b>	<b>Materials</b>	<b>Weight</b>	<b>Recycled Plastic %</b>	<b>Recyclable</b>	<b>Returnable</b>	<b>Composite</b>
	Tin	Plastic	38 g	- %			
	Tin	Steel	184.5 g	- %			
	Outer Case Packaging						
	<b>Type</b>	<b>Materials</b>	<b>Weight</b>	<b>Recycled Plastic %</b>	<b>Recyclable</b>	<b>Returnable</b>	<b>Composite</b>
	Case	Plastic	21.5 g	- %			
	Case	Paper/Cardboard	80 g	- %			
	OTHER INFORMATION CONTACT INFORMATION	Address					
		Nestle UK					
Nestlé UK Ltd							
Haxby Road							
York							
YO31 8TA1							
England							
P: (Phone) 0800 00 00 30							
Complaints Contact							
consumer.services@uk.nestle.com							
P: (Phone) 0800 00 00 30							

The information on the [Erudus System](#) has been supplied by the manufacturers of the products and, whilst the owners of the Erudus System take steps to ensure the information is regularly updated, they give no warranty and no guarantee that the information is accurate. Product information and ingredients may change, please always read product labels carefully in addition to using the information provided by Erudus.

We do not accept liability for any inaccuracies or incorrect information contained on this site.  
Please visit <http://www.erudus.com/terms-and-conditions> for full terms and conditions.