


Changed Feb 13, 2024 12:04

Reviewed Feb 13, 2024 12:04

Erudus ID 2a004cf138354f1ea87207a62432e8a5

Version 2.0



**RECEIVED**  
Thomas Ridley QC Dept.  
1:02 pm, 15 Feb 2024

The food information supplied by Thomas Ridley Foodservice has been provided by the respective product manufacturer. Whilst we use reasonable endeavours to check this information and ensure its accuracy, we do not give any warranty (whether express or implied), guarantee or representation that it is true, accurate or complete in any respect.

As product information, ingredients, nutritional guides and dietary or allergy advice may change from time to time, we recommend that you always carefully read the product label prior to using or consuming any such products. You should not solely rely upon the information we provide and make your own assessment as to the suitability or otherwise of any given product.



50149

# Kuhne Sauerkraut (6 x 810g)

Sauerkraut 6x810g

## PRODUCT DESCRIPTION

Chopped white cabbage fermented in brine, blanched with brine, pasteurised.

<b>Brand</b>	R.H.Amar & Co Limited
<b>Manufacturer Product Code</b>	KU115
<b>Product Type</b>	Food
<b>Product Category</b>	Pickled / Preserved
<b>Storage Type</b>	Ambient
<b>Erudus ID</b>	2a004cf138354f1ea87207a62432e8a5
<b>Specification Type</b>	Generic



<b>Inner Component GTIN</b>	4012200505656
<b>Outer Case GTIN</b>	05019729000418



## INGREDIENTS

### Ingredient Declaration

White cabbage, salt.

## ALLERGENS

Product Contains:

<b>Celery/Celeriac</b>	No	<b>Mustard</b>	No
<b>Cereals Containing Gluten</b>	No	<b>Nuts (Tree)</b>	No
<b>Barley</b>	No	<b>Almond nuts</b>	No
<b>Oats</b>	No	<b>Brazil nuts</b>	No
<b>Rye</b>	No	<b>Cashew nuts</b>	No
<b>Wheat (including Spelt and Khorasan)</b>	No	<b>Hazelnuts</b>	No
<b>Crustacea</b>	No	<b>Macadamia (Queensland) nuts</b>	No
<b>Eggs</b>	No	<b>Pecan nuts</b>	No
<b>Fish</b>	No	<b>Pistachio nuts</b>	No
<b>Lupin</b>	No	<b>Walnuts</b>	No
<b>Milk</b>	No	<b>Peanuts</b>	No
<b>Molluscs</b>	No	<b>Sesame Seeds</b>	No
		<b>Soybeans</b>	No
		<b>Sulphur Dioxide and Sulphites</b>	No

## SUPPLEMENTARY INGREDIENT INFORMATION

<b>Palm Oil</b>	No
<b>Hydrogenated Vegetable Oil/Fat</b>	No
<b>GM Protein/DNA</b>	No

ADDITIVES

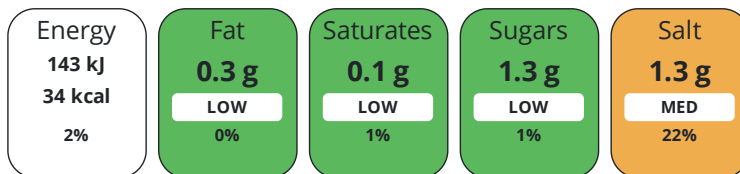
Product Contains:

<b>Artificial Antioxidants</b>	No	<b>Artificial Flavourings</b>	No
<b>Artificial Colours</b>	No	<b>Artificial Preservatives</b>	No
<b>Artificial Flavour Enhancers</b>	No	<b>Artificial Sweeteners</b>	No
<b>Vegan Diet</b>	Suitable for	<b>Vegetarian Diet</b>	Suitable for
<b>Halal Diet</b>	No	<b>Kosher Diet</b>	No

DIET  
SUITABILITY

NUTRITIONAL  
INFORMATION

Each 100g/ml portion contains:



of your reference intake.

Typical values per 100g/ml : Energy 34kcal / 143kj

Nutrient	per 100g	RI per 100g
<b>Energy (kJ)</b>	143 kJ	2%
<b>Energy (kcal)</b>	34 kcal	2%
<b>Fat</b>	0.3 g	0%
<b>of which Saturates</b>	< 0.1 g	1%
<b>Carbohydrate</b>	4.3 g	2%
<b>of which Sugars</b>	1.3 g	1%
<b>Fibre</b>	2.6 g	
<b>Protein</b>	1.3 g	3%
<b>Salt</b>	1.3 g	22%

SUPPLEMENTARY  
NUTRITIONAL  
INFORMATION

HANDLING &  
STORAGE  
INFORMATION

**Directions For Use**

Use as required. Ready to eat.

**Storage Instructions**

Store in a cool dry place. Refrigerate after opening.

<b>Shelf Life from Time of Production</b>	645 Days	<b>Exempt From Shelf Life Labelling</b>	No
---	----------	---	----

ACCREDITATIONS/  
CERTIFICATIONS/  
ASSURANCE  
SCHEMES



ORIGIN

**Product Country of Origin/Place of** Germany

**Provenance**

PRODUCT  
CHARACTERISTICS

Standards Testing

<b>Do you undertake trend analysis of microbiological results?</b>	No	<b>Is shelf life testing undertaken?</b>	No
--	----	--	----

Analytical Standards

Test	Description	Frequency	Target	Range	Sample (g or ml)
Acidity (%)		Every Batch	=1.2	0.95 to 1.45	100
pH		Every Batch	<4.2	0 to 4.2	100
Salt Content (%)		Every Batch	=1.3	1 to 1.6	100

CONFIGURATION

Case Configuration Inner Pack Configuration

**Total Quantity of Inner Components in Outer Case** 6 Units

**Is the Outer Case Splittable?** Yes

PRODUCT WEIGHTS

Inner Component

**Variable Weight Consumer Item** No

**Inner Component Weight** 810 g

**Net Drained Weight** 0.7 kg

Outer Case

**Outer Case Gross Weight** 7.09 kg

**Outer Case Net Weight** 4.86 kg

PRODUCT DIMENSIONS

Inner Component

**Inner Component Depth** 100 mm

**Inner Component Width** 10 mm

**Inner Component Height** 130 mm

Outer Case

**Outer Case Depth** 350 mm

**Outer Case Width** 250 mm

**Outer Case Height** 130 mm

PALLET INFORMATION

**Quantity of Cases Per Pallet Layer** 13 Cases

**Pallet Height** 1.4 MTR

**Quantity of Layers Per Pallet** 10 Layers

**Pallet Gross Weight** 922 kg

**Quantity of Cases Per Pallet** 130 Cases

PACKAGING

Inner Component Packaging

Type	Materials	Weight	Recycled Plastic %	Recyclable	Returnable	Composite
Label	Paper/Cardboard	2 g	- %			
Jar	Glass	350 g	- %			
Lid	Steel	10 g	- %			

Outer Case Packaging

Type	Materials	Weight	Recycled Plastic %	Recyclable	Returnable	Composite
Shrink Wrap	Plastic	15 g	- %			
Tray	Paper/Cardboard	55 g	- %			

OTHER INFORMATION

**Intrastat/Taric Code** 20011000

CONTACT  
INFORMATION

Address

R.H.Amar & Co Limited  
Turnpike Way  
High Wycombe  
Bucks  
HP12 3TF  
England

P: (Phone) +44 (0) 1494 530 200

The information on the [Erudus System](#) has been supplied by the manufacturers of the products and, whilst the owners of the Erudus System take steps to ensure the information is regularly updated, they give no warranty and no guarantee that the information is accurate. Product information and ingredients may change, please always read product labels carefully in addition to using the information provided by Erudus.

We do not accept liability for any inaccuracies or incorrect information contained on this site.  
Please visit <http://www.erudus.com/terms-and-conditions> for full terms and conditions.