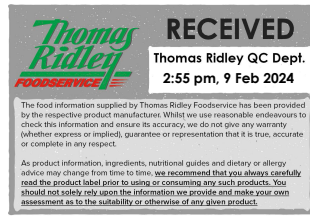


Changed Feb 09, 2024 13:38

Reviewed Feb 09, 2024 13:38

Erudus ID 6ab2aaaa275449d0a4008c5424639629

Version 2.0



51035

Freshers – No Added Sugar Whole Lemon Drink 2 x 5ltrs

Concentrated No Added Sugar Whole Lemon Drink With Sweeteners 2x5litre

PRODUCT DESCRIPTION

Concentrated no added sugar whole lemon drink with sweeteners

Brand	Aimia Foods Ltd
Manufacturer Product Code	F5NASLEM
Product Type	Drink
Product Category	Juices and Cordials
Storage Type	Ambient
Erudus ID	6ab2aaaa275449d0a4008c5424639629
Specification Type	Drinks



Inner Component GTIN 5060113913890

Outer Case GTIN 05060113913982



INGREDIENTS

Ingredient Declaration

Water, comminuted lemons (10%), acid (citric acid), sweeteners (acesulfame K, aspartame*), preservatives (sodium benzoate, sodium metabiSULPHITE), antioxidant (ascorbic acid), stabiliser (carboxymethylcellulose), flavourings.

Allergy Advice

For allergens, see ingredients in CAPITALS.

Ingredient Statements

* Contains a source of phenylalanine

ALLERGENS

Product Contains:

Celery/Celeriac	No	Mustard	No
Cereals Containing Gluten	No	Nuts (Tree)	No
Barley	No	Almond nuts	No
Oats	No	Brazil nuts	No
Rye	No	Cashew nuts	No
Wheat (including Spelt and Khorasan)	No	Hazelnuts	No
Crustacea	No	Macadamia (Queensland) nuts	No
Eggs	No	Pecan nuts	No
Fish	No	Pistachio nuts	No
Lupin	No	Walnuts	No
Milk	No	Peanuts	No
Molluscs	No	Sesame Seeds	No
		Soybeans	No
		Sulphur Dioxide and Sulphites	Yes

SUPPLEMENTARY INGREDIENT INFORMATION

Palm Oil	No
Hydrogenated Vegetable Oil/Fat	No
GM Protein/DNA	No

ADDITIVES

Product Contains:

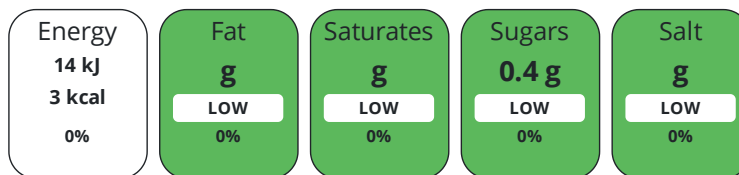
Artificial Antioxidants	No	Artificial Preservatives	Yes
Artificial Colours	No	Artificial Sweeteners	Yes
Artificial Flavour Enhancers	No		

DIET SUITABILITY

Vegan Diet	Suitable for	Vegetarian Diet	Suitable for
Halal Diet	No	Kosher Diet	No

NUTRITIONAL INFORMATION

Each 100g/ml portion contains:



of your reference intake.

Typical values per 100g/ml : Energy 3kcal / 14kj

Nutrient	per 100ml	RI per 100ml	per 50ml serving	RI per 50ml serving
Energy (kJ)	14 kJ	0%	7 kJ	0%
Energy (kcal)	3 kcal	0%	1.5 kcal	0%
Fat	0 g	0%	-	
of which Saturates	0 g	0%	-	
Carbohydrate	0.7 g	0%	0.4 g	0%
of which Sugars	0.4 g	0%	0.2 g	0%
Protein	0.1 g	0%	0.1 g	0%
Salt	0 g	0%	-	
Serving Size	50 ml			
Number of Servings	100 Servings			

SUPPLEMENTARY
NUTRITIONAL
INFORMATION

HANDLING &
STORAGE
INFORMATION

Directions For Use

Dilute 1 (50ml) part concentrate to 4 parts water (200ml). For toddlers and young children dilute with extra water.

Storage Instructions

Store in a cool place away from direct sunlight.

Shelf Life from Time of Production 365 Days

Exempt From Shelf Life Labelling No

ACCREDITATIONS/
CERTIFICATIONS/
ASSURANCE
SCHEMES



Other Accreditation

N/A

ORIGIN

Product Country of Origin/Place of United Kingdom

Provenance

Additional Origin Details

N/A

PRODUCT
CHARACTERISTICS
CONFIGURATION

Standards Testing

Case Configuration

Inner Pack Configuration

Variable Inner Components in Outer Case No

Count per Inner Component 2

Total Quantity of Inner Components in 2 Units

Outer Case

Is the Outer Case Splittable? Yes

PRODUCT
WEIGHTS

Inner Component

Inner Component Volume 5 litre

Outer Case

Outer Case Gross Weight 10.49 kg

Outer Case Net Weight 10.06 kg

PRODUCT
DIMENSIONS

Inner Component

Inner Component Depth 143 mm

Inner Component Width 143 mm

Inner Component Height 340 mm

Outer Case

Outer Case Depth 300 mm

Outer Case Width 150 mm

Outer Case Height 350 mm

PALLET
INFORMATION

Quantity of Cases Per Pallet Layer 24 Cases

Pallet Height 1.56 MTR

Quantity of Layers Per Pallet 4 Layers

Quantity of Cases Per Pallet 96 Cases

PACKAGING

Inner Component Packaging

Type	Materials	Weight	Recycled Plastic %	Recyclable	Returnable	Composite
Bottle	Plastic / PET (Polyethylene Terethphalate)	90 g	51 %			
Cap	Plastic / HDPE (High Density Polyethylene)	4.6 g	- %			
Other	Plastic / HDPE (High Density Polyethylene)	6.6 g	- %			

Outer Case Packaging

Type	Materials	Weight	Recycled Plastic %	Recyclable	Returnable	Composite
Case	Paper/Cardboard / Corrugated	230 g	- %	Yes	No	
Label	Paper/Cardboard / Paper	1.7 g	- %	Yes	No	

Transport Packaging

Type	Materials	Weight	Recycled Plastic %	Recyclable	Returnable	Composite
Pallet Wrap	Plastic	280 g	- %	No	No	
Layer Card	Paper/Cardboard / Corrugated	403 g	- %		No	
Pallet	Wood	25000 g	- %		No	

OTHER
INFORMATION

Manufacturer Comments

N/A

CONTACT
INFORMATION

Address

Aimia Foods Ltd
Penny Lane
Haydock
Merseyside
WA11 0QZ
England

Technical Contact

Sophie Wall
Head of Technical
sophie.wall@aimiafoods.com

P: (Phone) 01942272900

P: (Phone) 01942 272900

Complaints Contact

Helen Bulmer
Customer Services Manager
customer.services@aimiafoods.com

P: (Phone) 01942 408600

The information on the [Erudus System](#) has been supplied by the manufacturers of the products and, whilst the owners of the Erudus System take steps to ensure the information is regularly updated, they give no warranty and no guarantee that the information is accurate. Product information and ingredients may change, please always read product labels carefully in addition to using the information provided by Erudus.

We do not accept liability for any inaccuracies or incorrect information contained on this site.
Please visit <http://www.erudus.com/terms-and-conditions> for full terms and conditions.