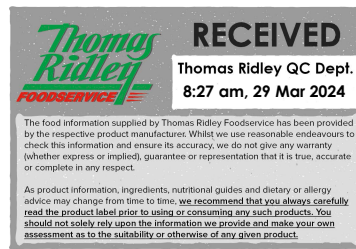


Changed Mar 28, 2024 19:13

Reviewed Mar 28, 2024 19:13

Erudus ID 696ce9955e914fcca46475a38e5e61e2

Version 6.0



Thomas Ridley
FOODSERVICE

RECEIVED
Thomas Ridley QC Dept.
8:27 am, 29 Mar 2024

The food information supplied by Thomas Ridley Foodservice has been provided by the respective product manufacturer. Whilst we use reasonable endeavours to check this information and ensure its accuracy, we do not give any warranty (whether express or implied), guarantee or representation that it is true, accurate or complete in any respect.

As product information, ingredients, nutritional guides and dietary or allergy advice may change from time to time, we recommend that you always carefully read the product label prior to using or consuming any such products. You should not solely rely upon the information we provide and make your own assessment as to the suitability or otherwise of any given product.



51162

Cooldelight Desserts Vanilla & Raspberry Ripple Ice Cream Sponge Roll 3 x 500g

Vanilla & Raspberry Ripple Ice Cream Sponge Roll 3x500g

PRODUCT DESCRIPTION

Vanilla flavour ice cream with raspberry flavour ripple in a plain sponge

| | |
|----------------------------------|----------------------------------|
| Brand | Cooldelight Desserts Ltd |
| Manufacturer Product Code | IRR001 |
| Product Type | Food |
| Product Category | Desserts |
| Storage Type | Frozen |
| Erudus ID | 696ce9955e914fcca46475a38e5e61e2 |
| Specification Type | Generic |



Outer Case GTIN 5060109250015



INGREDIENTS

Ingredient Declaration

Ice Cream

Water, Sugar, Palm Oil, Whey Solids (MILK), Whey Powder (MILK), Skimmed MILK Powder, BUTTERMILK Powder, Emulsifier Mono and Di-Glycerides of Fatty Acids, Stabilisers Guar Gum, Xanthan Gum, Locust Bean Gum, Flavouring, Colour Beta-Carotene.

Sponge

23% WHEAT Flour (Calcium Carbonate, Iron, Niacin, Thiamin), Water, Sugar, Dextrose, Egg Blend (EGG, EGG white), SOYA Flour, Raising Agents (Disodium Disophate, Sodium Carbonate), Skimmed Milk Powder, Emulsifiers Mono & Di-Glycerides of Fatty Acids, Polyglycerol Esters of Fatty Acids.

Raspberry Sauce

Water, Sugar, Glucose, Colour Beetroot Red, Stabiliser Carboxy Methyl Cellulose, Citric Acid, Flavouring, Potassium Sorbate, Pectin

ALLERGENS

Product Contains:

| | | | |
|---|-----|--------------------------------------|-----|
| Celery/Celeriac | No | Mustard | No |
| Cereals Containing Gluten | Yes | Nuts (Tree) | No |
| Barley | No | Almond nuts | No |
| Oats | No | Brazil nuts | No |
| Rye | No | Cashew nuts | No |
| Wheat (including Spelt and Khorasan) | Yes | Hazelnuts | No |
| Crustacea | No | Macadamia (Queensland) nuts | No |
| Eggs | Yes | Pecan nuts | No |
| Fish | No | Pistachio nuts | No |
| Lupin | No | Walnuts | No |
| Milk | Yes | Peanuts | No |
| Molluscs | No | Sesame Seeds | No |
| | | Soybeans | Yes |
| | | Sulphur Dioxide and Sulphites | No |

SUPPLEMENTARY
INGREDIENT
INFORMATION

| | |
|---------------------------------------|-----|
| Palm Oil | Yes |
| Hydrogenated Vegetable Oil/Fat | No |
| GM Protein/DNA | No |

ADDITIVES

Product Contains:

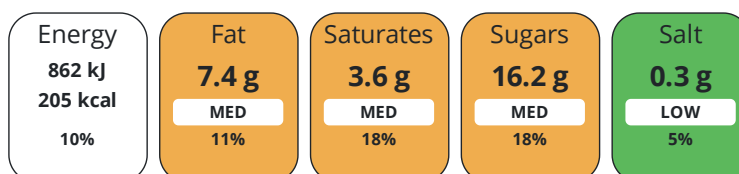
| | | | |
|-------------------------------------|----|---------------------------------|----|
| Artificial Antioxidants | No | Artificial Flavourings | No |
| Artificial Colours | No | Artificial Preservatives | No |
| Artificial Flavour Enhancers | No | Artificial Sweeteners | No |

DIET
SUITABILITY

| | | | |
|-------------------|----|------------------------|--------------|
| Vegan Diet | No | Vegetarian Diet | Suitable for |
| Halal Diet | No | Kosher Diet | No |

NUTRITIONAL
INFORMATION

Each 100g/ml portion contains:



of your reference intake.

Typical values per 100g/ml : Energy 205kcal / 862kj

| Nutrient | per 100g | RI per 100g |
|---------------------------|----------|-------------|
| Energy (kJ) | 862 kJ | 10% |
| Energy (kcal) | 205 kcal | 10% |
| Fat | 7.4 g | 11% |
| of which Saturates | 3.6 g | 18% |
| of which Mono-unsaturates | 2.8 g | |
| of which Polyunsaturates | 0.6 g | |
| Carbohydrate | 30.6 g | 12% |
| of which Sugars | 16.2 g | 18% |
| Fibre | 0.3 g | |
| Protein | 3.8 g | 8% |
| Salt | 0.3 g | 5% |
| Sodium | 100 mg | |

VITAMINS AND
MINERALS

| Nutrient | per 100g | RI per 100g |
|--------------------------|----------|-------------|
| Vitamin A | 24.5 µg | 3% |
| Vitamin C | 0.62 mg | 1% |
| Folate/Folic Acid | 6.7 µg | 3% |
| Calcium | 110 mg | 14% |
| Iron | 0.27 mg | 2% |
| Zinc | 0.43 mg | 4% |

SUPPLEMENTARY
NUTRITIONAL
INFORMATION

| | |
|---|-------|
| Non Milk Extrinsic Sugars per 100 g/ml | 8.5 g |
|---|-------|

HANDLING & STORAGE INFORMATION

Directions For Use

Storage Instructions

Store Below 18oC Once Thawed Do Not Refreeze

Shelf Life from Time of Production 730 Days

Exempt From Shelf Life Labelling No

ACCREDITATIONS/ CERTIFICATIONS/ ASSURANCE SCHEMES

BRCGS Certified

School Approved (The Requirement for School Food Regulation 2014)

Roundtable of Sustainable Palm Oil (RSPO)

Other Accreditation

ORIGIN

Product Country of Origin/Place of Provenance United Kingdom

Additional Origin Details

England

PRODUCT CHARACTERISTICS CONFIGURATION

Standards Testing

Case Configuration

Inner Pack Configuration

Total Quantity of Inner Components in Outer Case 3 Units

Count per Inner Component 3

Outer Case

Is the Outer Case Splittable? No

PRODUCT WEIGHTS

Inner Component

Inner Pack

Variable Weight Consumer Item No

Inner Pack Gross Weight 524 g

Inner Component Weight 500 g

Inner Pack Net Weight 500 g

Net Drained Weight 1.5 kg

e mark No

Outer Case

Outer Case Gross Weight 1.7 kg

Outer Case Net Weight 1.5 kg

PRODUCT DIMENSIONS

Inner Component

Inner Component Depth 320 mm

Inner Component Width 100 mm

Inner Component Height 100 mm

Outer Case

Outer Case Depth 360 mm

Outer Case Width 282 mm

Outer Case Height 83 mm

PALLET INFORMATION

Quantity of Cases Per Pallet Layer 17 Cases

Pallet Height 1.78 MTR

Quantity of Layers Per Pallet 11 Layers

Quantity of Cases Per Pallet 187 Cases

PACKAGING

Inner Component Packaging

| Type | Materials | Weight | Recycled Plastic % | Recyclable | Returnable | Composite |
|------|-----------|--------|--------------------|------------|------------|-----------|
| Box | Plastic | 72 g | - % | | | |

Outer Case Packaging

| Type | Materials | Weight | Recycled Plastic % | Recyclable | Returnable | Composite |
|------|-----------------|--------|--------------------|------------|------------|-----------|
| Case | Paper/Cardboard | 174 g | - % | | | |

OTHER
INFORMATION

Manufacturer Comments

.

CONTACT
INFORMATION

Address

Coodelight Desserts Ltd
Carr Bank Lodge
Ramsbottom Lane
Ramsbottom
BL0 9DJ
England

P: (Phone) 0870 201 2121

The information on the [Erudus System](#) has been supplied by the manufacturers of the products and, whilst the owners of the Erudus System take steps to ensure the information is regularly updated, they give no warranty and no guarantee that the information is accurate. Product information and ingredients may change, please always read product labels carefully in addition to using the information provided by Erudus.

We do not accept liability for any inaccuracies or incorrect information contained on this site.
Please visit <http://www.erudus.com/terms-and-conditions> for full terms and conditions.