

Changed Aug 06, 2024 08:36

Erudus ID 5d8394827ef14886bc4ec72c01833159

Version 2.0

52004

# Mini Pie Selection 26g (1 x 48)

Mini Pie Selection 26g (1 X 48)

## PRODUCT DESCRIPTION

Ready-baked mini pies in golden shortcrust pastry, each with a puff pastry lid; 24 of each: \* British beef and ale, topped with black pepper \* British chicken and tarragon, topped with parsley (1 x 48)

Brand	Central Foods Group Ltd
Manufacturer Product Code	FDCAN101
Product Type	Food
Product Category	Pies, Pizza, Sausages Rolls, Savouries
Storage Type	Frozen
Erudus ID	5d8394827ef14886bc4ec72c01833159
Specification Type	Legacy

Outer Case GTIN 5060089682103



## INGREDIENTS

### Ingredient Declaration

Pastry Case (40%) Fortified **WHEAT** Flour (with Calcium, Iron, Niacin, Thiamin), Margarine (Palm Oil, Coconut Oil, Rapeseed Oil, Water, Salt, Natural Flavouring, Colour (Carotenes), Acidity Regulators (Citric Acid, Disodium Citrate), Emulsifier (Mono- and Di-Glycerides of Fatty Acids)), Vegetable Shortening (Palm Oil, Rapeseed Oil), Maize Flour, Water, Tomato Paste, Puff Pastry Lid (26%) Fortified **WHEAT** Flour (with Calcium, Iron, Niacin, Thiamin), Margarine (Rapeseed Oil, Palm Oil), Water, Salt, Preservative (Potassium Sorbate), **EGG** Glaze, Beef & Ale Pie Filling (17%) Beef Mince (14%), Water, Brown Ale (5%), Onion, Tomato Paste, Modified Maize Starch, Beef Stock (Water, Beef Stock (Beef Bone, Water), Yeast Extract, Salt, Lemon Juice Concentrate, Beef Fat), Garlic, Sea Salt, Black Pepper, Chicken & Tarragon Pie Filling (17%) Chicken (16%), Onion, Water, Modified Maize Starch, Chicken Stock (Roast Chicken, Rehydrated Potato, Water, Yeast Extract, Salt, Chicken Fat), Garlic, Single Cream (**MILK**), Dijon **MUSTARD** (Water, **MUSTARD** Seeds, Spirit Vinegar, Salt), Sage, Tarragon, White Pepper, Parsley.

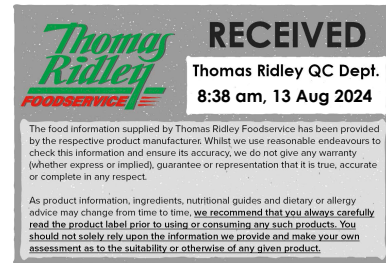
## ALLERGENS

Product Contains:

<b>Celery/Celериac</b>	No	<b>Mustard</b>	Yes
<b>Cereals Containing Gluten</b>	Yes	<b>Nuts (Tree)</b>	No
<b>Barley</b>	No	<b>Almond nuts</b>	No
<b>Oats</b>	No	<b>Brazil nuts</b>	No
<b>Rye</b>	No	<b>Cashew nuts</b>	No
<b>Wheat (including Spelt and Khorasan)</b>	Yes	<b>Hazelnuts</b>	No
<b>Gluten content &lt;20ppm</b>	No	<b>Macadamia (Queensland) nuts</b>	No
<b>Crustacea</b>	No	<b>Pecan nuts</b>	No
<b>Eggs</b>	Yes	<b>Pistachio nuts</b>	No
<b>Fish</b>	No	<b>Walnuts</b>	No
<b>Lupin</b>	No	<b>Peanuts</b>	No
<b>Milk</b>	Yes	<b>Sesame Seeds</b>	No
<b>Molluscs</b>	No	<b>Soybeans</b>	No
		<b>Sulphur Dioxide and Sulphites</b>	No

### Additional Allergen Information

For allergens, including cereals containing gluten, see ingredients in CAPITALS.



SUPPLEMENTARY  
INGREDIENT  
INFORMATION

<b>Palm Oil</b>	Yes
<b>Hydrogenated Vegetable Oil/Fat</b>	No
<b>GM Protein/DNA</b>	No

ADDITIVES

*Product Contains:*

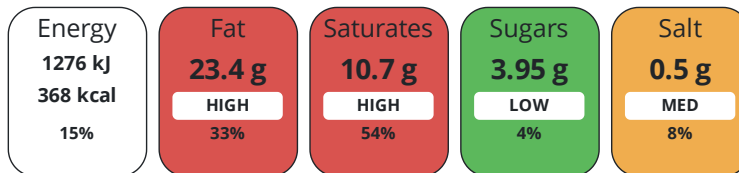
<b>Artificial Antioxidants</b>	No	<b>Artificial Flavourings</b>	No
<b>Artificial Colours</b>	No	<b>Artificial Preservatives</b>	No
<b>Artificial Flavour Enhancers</b>	No	<b>Artificial Sweeteners</b>	No

DIET  
SUITABILITY

<b>Suitable for Coeliacs</b>	No	<b>Halal Diet</b>	No
<b>Kosher Diet</b>	No	<b>Vegetarian Diet</b>	No
<b>Vegan Diet</b>	No		

NUTRITIONAL  
INFORMATION

Each 100g/ml portion contains:



of your reference intake.

Typical values per 100g/ml : Energy 368kcal / 1276kJ

Nutrient	per 100g/ml	RI per 100g/ml	per 26g/ml serving	RI per 26g/ml serving
<b>Energy (kJ)</b>	1276 kJ	15%	331.8 kJ	4%
<b>Energy (kcal)</b>	368 kcal	18%	95.7 kcal	5%
<b>Fat</b>	23.4 g	33%	6.1 g	9%
<b>of which Saturates</b>	10.7 g	54%	2.8 g	14%
<b>Carbohydrate</b>	33.2 g	13%	8.6 g	3%
<b>of which Sugars</b>	3.95 g	4%	1 g	1%
<b>Fibre</b>	2.3 g		0.6 g	
<b>Protein</b>	5.8 g	12%	1.5 g	3%
<b>Salt</b>	0.5 g	8%	0.1 g	2%
<b>Sodium</b>	200 mg		52 mg	

**Serving Size** 26 g

SUPPLEMENTARY  
NUTRITIONAL  
INFORMATION

HFSS (HIGH IN  
FAT, SALT AND  
SUGAR)

**HFSS Status** Yes

HANDLING &  
STORAGE  
INFORMATION

**Directions For Use**

From Frozen unless otherwise stated Oven: Remove from packaging. Place frozen product onto a baking tray. Place in a pre-heated oven at 200°/180°C (Fan)/Gas Mark 6 for approximately 14 mins. Ensure pies are piping hot before serving. Ensure a core temperature of >75°C is achieved (or relevant national requirements) for at least 30 seconds before serving. Do not reheat after cooking.

**Storage Instructions**

Keep Frozen. Store at -18°C or below

**Shelf Life from Time of Production** 405 Days

ACCREDITATIONS/  
CERTIFICATIONS/  
ASSURANCE  
SCHEMES  
ORIGIN

**BRCGS Certified**

**Roundtable of Sustainable Palm Oil (RSPO)**

**Product Country of Origin/Place of** United Kingdom

**Provenance**

**Additional Origin Details**

United Kingdom

PRODUCT  
CHARACTERISTICS

Standards Testing

**Do you undertake trend analysis of** No

**Is shelf life testing undertaken?** No

**microbiological results?**

Microbiological Standards

Organism	Description	Frequency	Target	Maximum	Sample (g or ml)
Bacillus Cereus (cfu/g or ml)		Annually	<50	100	-
Coliforms (cfu/g or ml)		Annually	<10	100	-
E. Coli (cfu/g or ml)		Annually	<10	100	-
Listeria Monocytogenes (cfu/g or ml)		Annually	=0	0	25
Staphylococcus Aureus (cfu/g or ml)		Annually	<10	100	-
Total Viable Count (TVC) (cfu/g or ml)		Annually	<100000	1000000	-
Salmonella (cfu/g or ml)		Annually	=0	0	25

CONFIGURATION

Case Configuration

Inner Pack Configuration

**Total Quantity of Inner Components in** 1 Units

**Outer Case**

**Is the Outer Case Splittable?** No

PRODUCT  
WEIGHTS

Inner Component

**Variable Weight Consumer Item** No

**Weight/Volume**

24/624g

Outer Case

**Outer Case Gross Weight** 1.49 kg

**Outer Case Net Weight** 1.25 kg

PRODUCT  
DIMENSIONS

Inner Component

**Inner Component Depth** 0 mm

**Inner Component Width** 0 mm

**Inner Component Height** 0 mm

Outer Case

**Outer Case Depth** 368 mm

**Outer Case Width** 246 mm

**Outer Case Height** 69 mm

PALLET  
INFORMATION

**Quantity of Cases Per Pallet Layer** 12 Cases

**Pallet Height** 1.46 MTR

**Quantity of Layers Per Pallet** 19 Layers

**Pallet Gross Weight** 354.72 kg

**Quantity of Cases Per Pallet** 228 Cases

PACKAGING

Inner Component Packaging

Type	Materials	Weight	Recycled Plastic %	Recyclable	Returnable	Composite
Bag	Plastic	55 g	0.00 %			
Bag	Paper/Cardboard	163.8 g	- %			
Bag	Aluminium	22.56 g	- %			

Transport Packaging

Type	Materials	Weight	Recycled Plastic %	Recyclable	Returnable	Composite
Other	Plastic	280 g	0.00 %		Yes	

OTHER INFORMATION CONTACT INFORMATION

Address

Central Foods Group Ltd  
 Maple Court  
 Ash Lane, Collingtree  
 Collingtree  
 Northants  
 NN4 0NB  
 England

P: (Phone) 01604 858 522

Complaints Contact

Karen Wright  
 Customer Care Admin Assistant  
 kwright@centralfoods.co.uk

P: (Phone) 01604 878 299

Technical Contact

Chris Stobart  
 Technical Manager  
 technical@centralfoods.co.uk

P: (Phone) 01604 878 276

Commercial Contact

Oliver Sampson  
 Commercial Manager  
 osampson@centralfoods.co.uk

P: (Phone) 07715 073 273

The information on the [Erudus System](#) has been supplied by the manufacturers of the products and, whilst the owners of the Erudus System take steps to ensure the information is regularly updated, they give no warranty and no guarantee that the information is accurate. Product information and ingredients may change, please always read product labels carefully in addition to using the information provided by Erudus.

We do not accept liability for any inaccuracies or incorrect information contained on this site.  
 Please visit <http://www.erudus.com/terms-and-conditions> for full terms and conditions.