

Changed Apr 19, 2024 09:41

Reviewed Apr 19, 2024 09:41

Erudus ID 373525c910c543d9a2ea7297adad0fbb

Version 2.0

52021

Yorkshire Scampi and Fish Bites 10*450G

Yorkshire Scampi And Fish Bites 10x450g

PRODUCT DESCRIPTION

A blend of succulent Whitefish & Scampi in a crispy breadcrumb.

Brand	Whitby Seafoods Ltd
Manufacturer Product Code	1603
Product Type	Food
Product Category	Prawns, Shrimp & Scampi
Storage Type	Frozen
Erudus ID	373525c910c543d9a2ea7297adad0fbb
Specification Type	Fish and Seafood



Inner Component GTIN	5016316016036
Outer Case GTIN	05016316916039



INGREDIENTS

Ingredient Declaration

Minced White **FISH** (30%), Breadcrumbs (**WHEAT** Flour (**WHEAT** Flour, Calcium Carbonate, Iron, Thiamine, Niacin), Yeast, Salt), Batter (Water, **WHEAT** Flour (**WHEAT** Flour, Calcium Carbonate, Iron, Thiamine, Niacin), Salt), Water, Scampi (**CRUSTACEANS**)(7%), Stabilisers: E450, E451, E452.

ALLERGENS

Product Contains:

Celery/Celery	No	Mustard	No
Cereals Containing Gluten	Yes	Nuts (Tree)	No
Barley	No	Almond nuts	No
Oats	No	Brazil nuts	No
Rye	No	Cashew nuts	No
Wheat (including Spelt and Khorasan)	Yes	Hazelnuts	No
Crustacea	Yes	Macadamia (Queensland) nuts	No
Eggs	No	Pecan nuts	No
Fish	Yes	Pistachio nuts	No
Lupin	No	Walnuts	No
Milk	No	Peanuts	No
Molluscs	May Contain	Sesame Seeds	No
		Soybeans	No
		Sulphur Dioxide and Sulphites	No

Risk Source:

Molluscs (Risk Source)	Factory
-------------------------------	---------

Additional Allergen Information

For allergens including cereals containing GLUTEN please see ingredients in BOLD. May contain MOLLUSCS



SUPPLEMENTARY
INGREDIENT
INFORMATION

Palm Oil	No
Hydrogenated Vegetable Oil/Fat	No
GM Protein/DNA	No

ADDITIVES

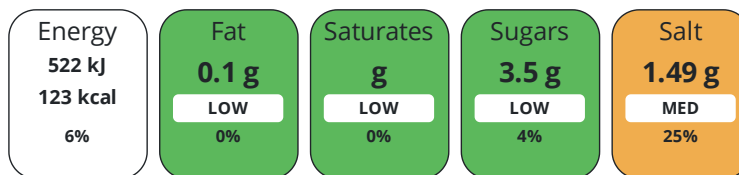
Product Contains:

Artificial Antioxidants	No	Artificial Flavourings	No
Artificial Colours	No	Artificial Preservatives	No
Artificial Flavour Enhancers	No	Artificial Sweeteners	No
Halal Diet	No	Kosher Diet	No

DIET
SUITABILITY

NUTRITIONAL
INFORMATION

Each 100g/ml portion contains:



of your reference intake.

Typical values per 100g/ml : Energy 123kcal / 522kJ

Nutrient	per 100g	RI per 100g	per 100g serving	RI per 100g serving
Energy (kJ)	522 kJ	6%	522 kJ	6%
Energy (kcal)	123 kcal	6%	123 kcal	6%
Fat	0.1 g	0%	0.1 g	0%
of which Saturates	0 g	0%	-	
Carbohydrate	22.5 g	9%	22.5 g	9%
of which Sugars	3.5 g	4%	3.5 g	4%
Fibre	1.3 g		1.3 g	
Protein	8 g	16%	8 g	16%
Salt	1.49 g	25%	1.5 g	25%

Serving Size 100 g

Source of Nutritional Information Manufacturers analysis

SUPPLEMENTARY
NUTRITIONAL
INFORMATION

HANDLING &
STORAGE
INFORMATION

Directions For Use

Deep fry from frozen. Pre-heat oil to 180°C/350°F. Cook for approximately 4 minutes until crisp and golden brown.

Storage Instructions

Store at -18°C or colder until the best before date. Follow the star mark instructions for your individual freezer. If defrosted, do not refreeze.

Shelf Life from Time of Production 547 Days **Exempt From Shelf Life Labelling** No

ACCREDITATIONS/
CERTIFICATIONS/
ASSURANCE
SCHEMES

BRCGS Certified **Other Accreditation**

ORIGIN	Product Country of Origin/Place of Provenance	United Kingdom					
	Additional Origin Details	Scampi: Approved Suppliers Sourced from North Sea / Irish Sea					
	Catch Zone	27 - Atlantic, Northeast					
PRODUCT CHARACTERISTICS	Standards Testing						
	Do you undertake trend analysis of microbiological results?	Yes	Is shelf life testing undertaken?			Yes	
	Microbiological Standards						
	Organism	Description	Frequency	Target	Maximum	Sample (g or ml)	
	E. Coli (cfu/g or ml)		Annually	<10	10	1	
	Salmonella (cfu/g or ml)		Annually	<0	0	25	
	Coagulase-positive Staphylococci (cfu/g or ml)		Annually	<10	100	1	
	HAZARD CONTROLS						
	Metal Detection	Yes					
	CONFIGURATION	Case Configuration	Inner Pack Configuration				
Variable Inner Components in Outer Case		No					
Total Quantity of Inner Components in Outer Case		10 Units					
Is the Outer Case Splittable?		No					
PRODUCT WEIGHTS	Inner Component						
	Variable Weight Consumer Item	No					
	Inner Component Weight	450 g					
	Outer Case						
	Outer Case Gross Weight	4.78 kg					
	Outer Case Net Weight	4.5 kg					
PRODUCT DIMENSIONS	Inner Component						
	Inner Component Depth	280 mm					
	Inner Component Width	190 mm					
	Inner Component Height	10 mm					
	Outer Case						
	Outer Case Depth	395 mm					
	Outer Case Width	295 mm					
	Outer Case Height	108 mm					
	PALLET INFORMATION	Quantity of Cases Per Pallet Layer	10 Cases	Pallet Height		1.68 MTR	
		Quantity of Layers Per Pallet	14 Layers	Pallet Gross Weight		697.34 kg	
Quantity of Cases Per Pallet		140 Cases					
PACKAGING	Inner Component Packaging						
	Type	Materials	Weight	Recycled Plastic %	Recyclable	Returnable	Composite
	Bag	Plastic	7 g	- %			
	Outer Case Packaging						
	Type	Materials	Weight	Recycled Plastic %	Recyclable	Returnable	Composite
	Case	Paper/Cardboard	211 g	- %			

Transport Packaging

Type	Materials	Weight	Recycled Plastic %	Recyclable	Returnable	Composite
Other	Plastic	350 g	- %		Yes	
Other	Wood	28000 g	- %		Yes	

OTHER INFORMATION

Intrastat/Taric Code	1605400020	Identification/Health Marks	GB YK 006
-----------------------------	------------	------------------------------------	-----------

Manufacturer Comments

Amount in Bag: 29 (+/- 4)

CONTACT INFORMATION

Address

Whitby Seafoods Ltd
 Fairfield way
 Whitby Business park
 Whitby
 North Yorkshire
 YO22 4PU
 England

P: (Phone) 01947 829193

Complaints Contact

Neve Saltmarsh
 Technical Services Coordinator
 neve.saltmarsh@whitby-seafoods.com

The information on the [Erudus System](#) has been supplied by the manufacturers of the products and, whilst the owners of the Erudus System take steps to ensure the information is regularly updated, they give no warranty and no guarantee that the information is accurate. Product information and ingredients may change, please always read product labels carefully in addition to using the information provided by Erudus.

We do not accept liability for any inaccuracies or incorrect information contained on this site.
 Please visit <http://www.erudus.com/terms-and-conditions> for full terms and conditions.