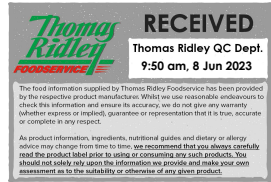


Supplier's Product Code : 5118542000  
 Product Added : 25 November 2022  
 Last Updated by Supplier : 25 November 2022  
 erudus id : 342a5aa5c5f4413c899b9d7bf21d9fb6



The information on the **Erudus System** has been supplied by the manufacturers of the products and, whilst the owners of the Erudus System take steps to ensure the information is regularly updated, they give no warranty and no guarantee that the information is accurate. Product information and ingredients may change, please always read product labels carefully in addition to using the information provided by Erudus One.

We do not accept liability for any inaccuracies or incorrect information contained on this site. Please visit <http://www.erudus.com/terms-and-conditions> for full terms and conditions.

## Kellogg's Crunchy Nut Cereal 4x500g

**Short Product Name:**  
Crunchy Nut Cereal

### Product Description:

Breakfast just got a whole lot crunchier with Kellogg's Crunchy Nut Cereal. The irresistibly crunchy flakes of golden corn are drizzled in yummy honey and chopped peanuts. This breakfast table classic is certain to brighten up your day with the delicious taste of honey combined with the classic Crunchy Nut taste you know and love. Not only do they taste amazing, Kellogg's Crunchy Nut Corn Flakes are enriched with 8 vitamins & minerals, plus they are made with no artificial colours or flavours. The only trouble is they taste too good! Enjoy as part of a balanced diet and healthy lifestyle. \*Please always check the label of the pack you receive as there may be differences from the information you read on site due to stock changeover

**Supplier's Product Code :**  
5118542000  
**Supplier:** Kellogg's  
 Kellogg Group Limited  
 Orange Tower  
 Salford  
 Greater Manchester  
 M50 2HF  
 England  
 P: 07716254258

### General Information

Food/Drink :	Food
Product Category :	Ambient
Generic Product Type :	Cereals

### OUTER PRODUCT

#### Outer case Information

Outer Case GTIN :	5053827185424	Outer Case Length :	298 mm
Packaging Type Description :	Bag	Outer Case Width :	199 mm
Total Quantity of Inner Units in Outer Case :	4 Units	Outer Case Height :	310 mm
Is Trade Item Splittable? :	No	Product Gross Weight :	2.43 kg
		Product Net Weight :	2.00 kg

#### Pallet Information

Quantity of Cases Per Pallet Layer :	1 Cases	Pallet Height :	1.00 MTR
Quantity of Layers Per Pallet :	1 Layers	Pallet Gross Weight :	Not specified.
Quantity of Cases Per Pallet :	1 Cases		

#### Logistical Information

Shelf Life from Time of Production :	365 Days	Minimum Order Quantity :	Not specified.
Guaranteed Shelf Life on Delivery :	Not specified.	Delivery Lead Time :	Not specified.

#### Waste Packaging Weight - Outer Case

Glass :	0.00 g	Aluminium :	0.00 g
Plastic :	23.47 g	Steel :	0.00 g
Percentage Recycled Plastic :	0.00 %	Other :	0.00 g
Paper/Board :	0.00 g		

#### Waste Packaging Weight - Transport Packaging

Plastic :	0.00 g	Wood Total :	0.00 g
Paper/Board :	0.00 g	Is Pallet Returnable? :	No
Percentage Recycled Plastic :	0.00 %		

#### Other Information

**Supplier Comments :**  
Not specified.

## INNER PRODUCT

### Origin Information

Product Country of Origin/Place of Provenance : European Union

**Additional Origin Details :**  
Not specified.

### Inner Pack Information

Internal GTIN : 5000127049307

Packaging Type Description : Box

Variable Weight Consumer Item : No

Net Drained Weight : Not specified.

Inner Unit Length : 69 mm

Inner Unit Height : 303 mm

Inner Unit Width : 192 mm

Inner Product Weight : 2.00 kg

Inner Product Weight Units : kg

**Weight/Volume :**  
Not specified.

### Handling Information

**Directions For Use :**  
Eat as directed

**Storage Instructions :**  
Store in a cool dry place.

## Dietary Information

### Ingredients :

Maize, sugar, **PEANUTS (6%), BARLEY** malt extract, molasses, honey (1%), salt, niacin, iron, vitamin B6, riboflavin, thiamin, folic acid, vitamin D, vitamin B12.

### Product contains:

GM Protein/DNA :	No
Celery/Celeriac (and products thereof) :	No
Lupin (and products thereof) :	No
Eggs (and products thereof) :	No
Fish (and products thereof) :	No
Soybeans (and products thereof) :	No
Milk (and products thereof) :	No
Mustard (and products thereof) :	No
<b>Peanuts (and products thereof) :</b>	<b>Yes</b>
Sesame Seeds (and products thereof) :	No
Crustacea (and products thereof) :	No
Molluscs (and products thereof) :	No
Nuts (and products thereof) :	No
Almond nuts :	No
Hazelnuts :	No
Walnuts :	No
Cashew nuts :	No
Pecan nuts :	No
Brazil nuts :	No
Pistachio nuts :	No
Macadamia nuts :	No
Queensland nuts :	No
<b>Cereals Containing Gluten :</b>	<b>Yes</b>
Wheat (and products thereof) :	No
Rye (and products thereof) :	No
<b>Barley (and products thereof) :</b>	<b>Yes</b>
Oats (and products thereof) :	No
Spelt (and products thereof) :	No
Kamut (and products thereof) :	No
Gluten content <20ppm :	-
Hydrogenated Vegetable Oil/Fat :	-
Palm Oil :	-
Sulphur Dioxide and Sulphites :	No
Sulphur Dioxide/Sulphites Concentration :	-

### Product contains :

Artificial Antioxidants :	-
Artificial Colours :	-
Artificial Flavourings :	-
Artificial Flavour Enhancers :	-
Artificial Preservatives :	-
Artificial Sweeteners :	-

### Product suitability:

Suitable for a Vegetarian Diet :	Yes
Suitable for a Vegan Diet :	No
Suitable for Sufferers of Lactose Intolerance :	No
Suitable for Coeliacs :	No
Approved for a Halal Diet :	No
Approved for a Kosher Diet :	No
HFSS (High in Fat, Salt and Sugar) :	Yes

### Allergen Statement :

Not specified.

## Nutritional Information

Average Serving :	Not specified.
Count per 100g :	Not specified.
Count Per Pack :	Not specified.
Energy per 100 G/ML :	1,683.00 kJ
Energy per 100 G/ML :	398.00 kcal
Fat per 100 G/ML :	4.5 g
- of which Saturates per 100 G/ML :	0.7 g
- of which Mono-unsaturates per 100 G/ML :	Not specified.
- of which Polyunsaturates per 100 G/ML :	Not specified.
Trans Fats per 100 G\ML :	Not specified.
Carbohydrate Per 100 G/ML :	82 g
- of which Sugars per 100 G/ML :	35 g
- of which Polyols per 100 G/ML :	Not specified.
- of which Starch per 100 G/ML :	Not specified.
Fibre per 100 G/ML :	2.5 g
Protein per 100 G/ML :	6 g
Salt per 100 G/ML :	0.75 g
Sodium per 100 G\ML :	Not specified.

Vitamin A per 100g :	Not specified.
Vitamin C per 100g :	Not specified.
Folate/Folic Acid per 100g :	Not specified.
Calcium per 100g :	Not specified.
Iron per 100g :	Not specified.
Zinc per 100g :	Not specified.
Cholesterol per 100 G/ML (UK/FR) :	Not specified.
Non Milk Extrinsic Sugars per 100gm :	Not specified.
Alcoholic Strength %Vol :	Not specified.
Fat Percentage in Dry Matter per 100g :	Not specified.

## Waste Packaging Weight - Inner Unit

Glass :	0.00 g
Plastic :	5.87 g
Percentage Recycled Plastic :	0.00 %
Paper/Board :	0.00 g

Aluminium :	0.00 g
Steel :	0.00 g
Other :	0.00 g

## Accreditations / Certifications / Assurance Schemes

BRCGS Certified Production :	No
Red Tractor :	No
Fairtrade :	No
Marine Stewardship Council Certified (MSC) :	No
Organic :	No
SALSA (Safe & Local Supplier Approval) :	No
British Lion Mark :	No
RSPCA Assured :	No
LEAF Marque (Linking Environment and Farming) :	No
Rainforest Alliance :	No
Food for Life Supplier Scheme :	No
Quality Meat Scotland :	No
Farm Assured Welsh Livestock :	No
Northern Ireland Beef & Lamb Farm Quality Assurance Scheme :	No
Quality Standard Mark (Beef/Lamb) :	No
Roundtable of Sustainable Palm Oil (RSPO) :	No
School Approved (The Requirement for School Food Regulation 2014) :	No
IFS Food Standard :	No
Best Aquaculture Practices (BAP) Certification :	No
ISO 14001 (Environmental System) :	No
FSSC 22000 :	No

<b>Other Accreditation :</b>	Not specified.
Intra Stat/Taric Code :	Not specified.
Commodity Code :	Not specified.
Identification/Health Marks :	Not specified.

## Standards Testing

Do you undertake trend analysis of  
microbiological results? : -

Is shelf life testing undertaken? : -

## Microbiological Standards

Not available.

## Analytical Standards

Not available.