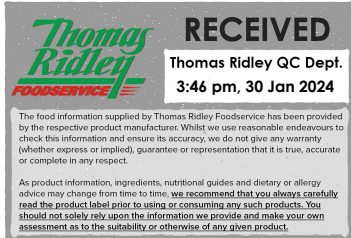


Changed Jan 30, 2024 14:06

Reviewed Jan 30, 2024 14:06

Erudus ID cd82fb5315114d4c859d1f8b366a0338

Version 2.0



Thomas Ridley
FOODSERVICE

RECEIVED
Thomas Ridley QC Dept.
3:46 pm, 30 Jan 2024

The food information supplied by Thomas Ridley Foodservice has been provided by the respective product manufacturers. Whilst we use reasonable endeavours to check this information and ensure its accuracy, we do not give any warranty (whether express or implied), guarantee or representation that it is true, accurate or complete in any respect.

As product information, ingredients, nutritional guides and dietary or allergy advice may change from time to time, we recommend that you always carefully read the product label prior to using or consuming any such products. You should not solely rely upon the information we provide and make your own assessment as to the suitability or otherwise of any given product.



JUICEBURST™ 500ml ORANGE

Orange Juice Drink From Concentrate 12x

PRODUCT DESCRIPTION

Orange Juice Drink from Concentrate

Brand	Purity Soft Drinks Ltd
Manufacturer Product Code	JBURSTORG500ML
Product Type	Drink
Product Category	Juices and Cordials
Storage Type	Ambient
Erudus ID	cd82fb5315114d4c859d1f8b366a0338
Specification Type	Drinks



Inner Component GTIN	5038512005010
Outer Case GTIN	05038512005614



INGREDIENTS

Ingredient Declaration

Orange juice from concentrate (92%), water, natural flavouring.

ALLERGENS

Product Contains:

Celery/Celeriac	No	Mustard	No
Cereals Containing Gluten	No	Nuts (Tree)	No
Barley	No	Almond nuts	No
Oats	No	Brazil nuts	No
Rye	No	Cashew nuts	No
Wheat (including Spelt and Khorasan)	No	Hazelnuts	No
Crustacea	No	Macadamia (Queensland) nuts	No
Eggs	No	Pecan nuts	No
Fish	No	Pistachio nuts	No
Lupin	No	Walnuts	No
Milk	No	Peanuts	No
Molluscs	No	Sesame Seeds	No
		Soybeans	No
		Sulphur Dioxide and Sulphites	No

SUPPLEMENTARY INGREDIENT INFORMATION

Palm Oil	No
Hydrogenated Vegetable Oil/Fat	No
GM Protein/DNA	No

ADDITIVES

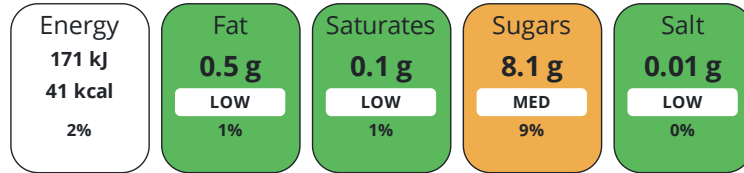
Product Contains:

Artificial Antioxidants	No	Artificial Flavourings	No
Artificial Colours	No	Artificial Preservatives	No
Artificial Flavour Enhancers	No	Artificial Sweeteners	No
Vegan Diet	Suitable for	Vegetarian Diet	Suitable for
Halal Diet	No	Kosher Diet	No

DIET
SUITABILITY

NUTRITIONAL
INFORMATION

Each 100g/ml portion contains:



of your reference intake.

Typical values per 100g/ml : Energy 41kcal / 171kj

Nutrient	per 100ml	RI per 100ml
Energy (kJ)	171 kJ	2%
Energy (kcal)	41 kcal	2%
Fat	< 0.5 g	1%
of which Saturates	< 0.1 g	1%
Carbohydrate	8.3 g	3%
of which Sugars	8.1 g	9%
Fibre	< 0.5 g	
Protein	0.7 g	1%
Salt	< 0.01 g	0%

SUPPLEMENTARY
NUTRITIONAL
INFORMATION

HANDLING &
STORAGE
INFORMATION

Directions For Use

Oral consumption

Storage Instructions

Store in cool dry conditions away from strong light sources. Best served chilled and shake well before use. Once opened keep in the fridge and consume within 3 days.

Shelf Life from Time of Production	210 Days	Exempt From Shelf Life Labelling	No
---	----------	---	----

ACCREDITATIONS/
CERTIFICATIONS/
ASSURANCE
SCHEMES



Other Accreditation

None

ORIGIN

Product Country of Origin/Place of Not Specified

Provenance

Additional Origin Details

Bottled in UK. Compulsory or voluntary country of original labelling not present.

PRODUCT
CHARACTERISTICS

Standards Testing

	Do you undertake trend analysis of microbiological results?	Yes	Is shelf life testing undertaken?	Yes			
	Microbiological Standards						
	Organism	Description	Frequency	Target	Maximum	Sample (g or ml)	
	Total Viable Count (TVC) (cfu/g or ml)		Every Batch	<1	0	5	
	Yeast (cfu/g or ml)		Every Batch	<1	0	5	
	Moulds (cfu/g or ml)		Every Batch	<1	0	5	
	Analytical Standards						
	Test	Description	Frequency	Target	Range	Sample (g or ml)	
	Acidity (%)		Every Batch	=0.75	0.64 to 0.92	10	
	Brix °Bx		Every Batch	=10.2	10.1 to 10.3	1	
	pH		Every Batch	<4	0 to 4	500	
CONFIGURATION	Case Configuration		Inner Pack Configuration				
	Total Quantity of Inner Components in Outer Case	12 Units					
	Is the Outer Case Splittable?	Yes					
PRODUCT WEIGHTS	Inner Component						
	Outer Case						
	Outer Case Gross Weight	6.6 kg					
	Outer Case Net Weight	6.27 kg					
PRODUCT DIMENSIONS	Inner Component						
	Inner Component Depth	187 mm					
	Inner Component Width	66 mm					
	Inner Component Height	66 mm					
	Outer Case						
	Outer Case Depth	269 mm					
	Outer Case Width	204 mm					
	Outer Case Height	192 mm					
PALLET INFORMATION	Quantity of Cases Per Pallet Layer	22 Cases		Pallet Height	1.3 MTR		
	Quantity of Layers Per Pallet	6 Layers		Pallet Gross Weight	908 kg		
	Quantity of Cases Per Pallet	132 Cases					
PACKAGING	Inner Component Packaging						
	Type	Materials	Weight	Recycled Plastic %	Recyclable	Returnable	Composite
	Bottle	Plastic	24.3 g	- %			
	Outer Case Packaging						
	Type	Materials	Weight	Recycled Plastic %	Recyclable	Returnable	Composite
	Case	Plastic	20 g	- %			
	Case	Paper/Cardboard	1 g	- %			

Transport Packaging

Type	Materials	Weight	Recycled Plastic %	Recyclable	Returnable	Composite
Other	Plastic	500 g	- %		Yes	
Other	Paper/Cardboard	1000 g	- %		Yes	
Other	Wood	35000 g	- %		Yes	

OTHER INFORMATION

Manufacturer Comments

It provides 1 of your 5 daily portions of fruit and vegetables No Added Sugar (Contains naturally occurring sugars) No artificial colours, flavours, sweeteners or preservatives Made in UK

CONTACT INFORMATION

Address

Purity Soft Drinks Ltd
 Douglas House
 Mounts Road
 Wednesbury
 West Midlands
 WS10 0BU
 England

P: (Phone) 01215057585

The information on the [Erudus System](#) has been supplied by the manufacturers of the products and, whilst the owners of the Erudus System take steps to ensure the information is regularly updated, they give no warranty and no guarantee that the information is accurate. Product information and ingredients may change, please always read product labels carefully in addition to using the information provided by Erudus.

We do not accept liability for any inaccuracies or incorrect information contained on this site. Please visit <http://www.erudus.com/terms-and-conditions> for full terms and conditions.