

Changed Jul 10, 2024 12:34

Reviewed Jul 10, 2024 12:34

Erudus ID e38765abf43b430381ab673f9c737c7f

Version 2.0

54132

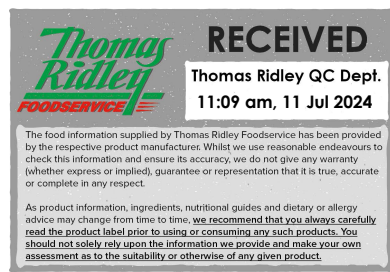
Greens Cut Leeks 10 x 1 kg

Leeks 10x1kg

PRODUCT DESCRIPTION

Greens Cut Leeks

Brand	D'Arta S.A.
Manufacturer Product Code	24110199 - S2411001099I
Product Type	Food
Product Category	Vegetables - Frozen
Storage Type	Frozen
Erudus ID	e38765abf43b430381ab673f9c737c7f
Specification Type	Fruit and Vegetables



Inner Component GTIN 5413408111776

Outer Case GTIN 5413408022416



INGREDIENTS

Ingredient Declaration

Leeks (100%)

ALLERGENS

Product Contains:

Celery/Celeriac	No	Mustard	No
Cereals Containing Gluten	No	Nuts (Tree)	No
Barley	No	Almond nuts	No
Oats	No	Brazil nuts	No
Rye	No	Cashew nuts	No
Wheat (including Spelt and Khorasan)	No	Hazelnuts	No
Crustacea	No	Macadamia (Queensland) nuts	No
Eggs	No	Pecan nuts	No
Fish	No	Pistachio nuts	No
Lupin	No	Walnuts	No
Milk	No	Peanuts	No
Molluscs	No	Sesame Seeds	No
		Soybeans	No
		Sulphur Dioxide and Sulphites	No

SUPPLEMENTARY INGREDIENT INFORMATION

Palm Oil	No
Hydrogenated Vegetable Oil/Fat	No
GM Protein/DNA	No

ADDITIVES

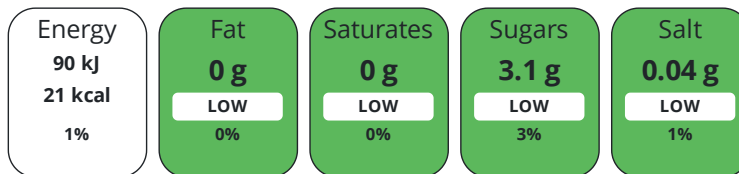
Product Contains:

Artificial Antioxidants	No	Artificial Flavourings	No
Artificial Colours	No	Artificial Preservatives	No
Artificial Flavour Enhancers	No	Artificial Sweeteners	No
Vegan Diet	Suitable for	Vegetarian Diet	Suitable for
Halal Diet	No	Kosher Diet	No

DIET SUITABILITY

NUTRITIONAL INFORMATION

Each 100g/ml portion contains:



of your reference intake.

Typical values per 100g/ml : Energy 21kcal / 90kJ

Nutrient	per 100g	RI per 100g	per 100g serving	RI per 100g serving
Energy (kJ)	90 kJ	1%	90 kJ	1%
Energy (kcal)	21 kcal	1%	21 kcal	1%
Fat	0 g	0%	-	-
of which Saturates	0 g	0%	-	-
of which Mono-unsaturates	0 g	-	-	-
of which Polyunsaturates	0 g	-	-	-
Carbohydrate	3.1 g	1%	3.1 g	1%
of which Sugars	3.1 g	3%	3.1 g	3%
of which Starch	0 g	-	-	-
Fibre	1.9 g	-	1.9 g	-
Protein	1.3 g	3%	1.3 g	3%
Salt	0.04 g	1%	-	-
Sodium	20 mg	-	20 mg	-
Serving Size	100 g			

VITAMINS AND MINERALS

Nutrient	per 100g	RI per 100g	per 100g serving	RI per 100g serving
Vitamin A	0.03 µg	0%	-	-
Vitamin C	2 mg	3%	2 mg	3%
Folate/Folic Acid	0 µg	0%	-	-
Calcium	19 mg	2%	19 mg	2%
Iron	1.6 mg	11%	1.6 mg	11%
Zinc	0.3 mg	3%	0.3 mg	3%

SUPPLEMENTARY NUTRITIONAL INFORMATION

Cholesterol per 100 g/ml (UK/FR)	0 g
Trans Fats per 100 g/ml	0 g
Fat Percentage in Dry Matter per 100 g/ml	0 %
Non Milk Extrinsic Sugars per 100 g/ml	0 g

HFSS (HIGH IN FAT, SALT AND SUGAR)
HANDLING & STORAGE INFORMATION

HFSS Status No

Directions For Use

Best cooked from frozen Add the deepfrozen vegetables to boiling water and cook over a gentle heat for approx. 6 - 8 min. Season to taste The vegetables are also suitable for preparation in micro-wave

Storage Instructions

Refrigerator: 24 hours Freezer compartment : 48 hours Freezer: -18°C: see expiry date

Shelf Life from Time of Production 913 Days

ACCREDITATIONS/
CERTIFICATIONS/
ASSURANCE
SCHEMES
ORIGIN

BRCGS Certified

IFS Food Standard

ISO 14001 (Environmental Management)

Product Country of Origin/Place of Belgium

Provenance

Additional Origin Details

n/a

PRODUCT CHARACTERISTICS

Standards Testing

Do you undertake trend analysis of microbiological results? Yes

Is shelf life testing undertaken? Yes

Microbiological Standards

Organism	Description	Frequency	Target	Maximum	Sample (g or ml)
Coliforms (cfu/g or ml)		Every Batch	<5000	10000	1
E. Coli (cfu/g or ml)		Every Batch	<10	100	1
Listeria Monocytogenes (cfu/g or ml)		Occasionally	<1	100	1
Total Viable Count (TVC) (cfu/g or ml)		Every Batch	<500000	1000000	1
Salmonella (cfu/g or ml)		Occasionally	<0	0	25
Yeast (cfu/g or ml)		Occasionally	<500	1000	1
Moulds (cfu/g or ml)		Occasionally	<500	1000	1

CONFIGURATION

Case Configuration

Inner Pack Configuration

Total Quantity of Inner Components in 10 Units

Outer Case

Is the Outer Case Splittable? Yes

PRODUCT WEIGHTS

Inner Component

Variable Weight Consumer Item No

Inner Component Weight 1 kg

Outer Case

Outer Case Gross Weight 10.42 kg

Outer Case Net Weight 10 kg

PRODUCT DIMENSIONS

Inner Component	
Inner Component Depth	310 mm
Inner Component Width	300 mm
Inner Component Height	55 mm
Outer Case	
Outer Case Depth	380 mm
Outer Case Width	245 mm
Outer Case Height	300 mm

PALLET INFORMATION

Quantity of Cases Per Pallet Layer	12 Cases	Pallet Height	1.7 MTR
Quantity of Layers Per Pallet	5 Layers	Pallet Gross Weight	650.2 kg
Quantity of Cases Per Pallet	60 Cases		

PACKAGING

Inner Component Packaging						
Type	Materials	Weight	Recycled Plastic %	Recyclable	Returnable	Composite
Bag	Plastic	10.09 g	0.00 %			
Outer Case Packaging						
Type	Materials	Weight	Recycled Plastic %	Recyclable	Returnable	Composite
Case	Plastic	1.1 g	0.00 %			
Case	Paper/Cardboard	314 g	- %			
Transport Packaging						
Type	Materials	Weight	Recycled Plastic %	Recyclable	Returnable	Composite
Other	Plastic	160 g	0.00 %		Yes	
Other	Paper/Cardboard	5.7 g	- %		Yes	
Other	Wood	25000 g	- %		Yes	

OTHER INFORMATION

Intrastat/Taric Code	7108095
-----------------------------	---------

Manufacturer Comments

n/a

CONTACT INFORMATION

Address
 D'Arta S.A.
 Pittensestraat 58a
 Ardooie
 8850
 Belgium

P. (Phone) 01273 704865

The information on the [Erudus System](#) has been supplied by the manufacturers of the products and, whilst the owners of the Erudus System take steps to ensure the information is regularly updated, they give no warranty and no guarantee that the information is accurate. Product information and ingredients may change, please always read product labels carefully in addition to using the information provided by Erudus.

We do not accept liability for any inaccuracies or incorrect information contained on this site. Please visit <http://www.erudus.com/terms-and-conditions> for full terms and conditions.