

55007

Food Connections Untopped Mix Muffins

Untopped Mix Muffins (Multipack)

PRODUCT DESCRIPTION

Mixed case comprising of 4 each Double Choc, Blueberry, Cherry, Choc Chip

Brand	Food Connections Ltd
Manufacturer Product Code	FCMFUT003/16
Product Type	Food
Product Category	Confectionery
Storage Type	Ambient
Erudus ID	1637654ab9f844e3a03c10ff8e6cda66
Specification Type	Legacy

Blueberry

Inner Component GTIN	5027870200120
Manufacturer Component Code	Blueberry
Outer Case GTIN	05027870202605



INGREDIENTS

Ingredient Declaration

WHEAT flour [with added calcium, iron, niacin & thiamine], Sugar, Rapeseed oil, Water, Humectants: Glycerine & Glucose syrup. (Glucose syrup, Water, Acidity regulator: E260.), Blueberries (4%), Whole dried **EGG**, **WHEAT** starch, Skimmed **MILK** powder, Raising agents: Sodium acid pyrophosphate & Potassium bicarbonate. Dextrose Monohydrate, Pregelatinised Maize Starch, Whey powder [from **MILK**], Rice Starch, Preservative: Potassium sorbate. Emulsifiers: Polyglycerol esters of fatty acids, Mono- & di-glycerides of fatty acids & Sodium stearoyl-2 lactylate. Salt, Stabiliser: Xanthan gum. Natural flavourings

ALLERGENS

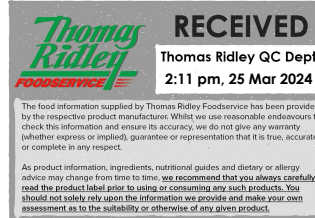
Product Contains:

Celery/Celериac	No	Mustard	No
Cereals Containing Gluten	Yes	Nuts (Tree)	May Contain
Barley	No	Almond nuts	May Contain
Oats	May Contain	Brazil nuts	No
Rye	No	Cashew nuts	No
Wheat (including Spelt and Khorasan)	Yes	Hazelnuts	No
Gluten content <20ppm	No	Macadamia (Queensland) nuts	No
Crustacea	No	Pecan nuts	No
Eggs	Yes	Pistachio nuts	No
Fish	No	Walnuts	No
Lupin	No	Peanuts	No
Milk	Yes	Sesame Seeds	No
Molluscs	No	Soybeans	May Contain
		Sulphur Dioxide and Sulphites	No

Risk Source:

Additional Allergen Information

Allergens, including cereals containing gluten, are shown in the ingredients list in BOLD CAPITALS. May contain traces of other cereals containing gluten, soya and nuts as this product was made in premises where these ingredients are used. WHEAT, EGG,



MILK

SUPPLEMENTARY INGREDIENT INFORMATION

Palm Oil	No
Hydrogenated Vegetable Oil/Fat	No
GM Protein/DNA	No

ADDITIVES

Product Contains:

Artificial Preservatives Yes

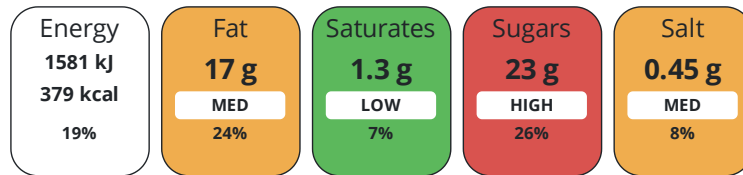
DIET SUITABILITY

Suitable for Coeliacs	No
Kosher Diet	No
Vegan Diet	No

Halal Diet	Suitable for
Vegetarian Diet	Suitable for

NUTRITIONAL INFORMATION

Each 100g/ml portion contains:



of your reference intake.

Typical values per 100g/ml : Energy 379kcal / 1581kj

Nutrient	per 100g/ml	RI per 100g/ml	per 92g/ml serving	RI per 92g/ml serving
Energy (kJ)	1581 kJ	19%	1454.5 kJ	17%
Energy (kcal)	379 kcal	19%	348.7 kcal	17%
Fat	17 g	24%	15.6 g	22%
of which Saturates	1.3 g	7%	1.2 g	6%
Carbohydrate	52 g	20%	47.8 g	18%
of which Sugars	23 g	26%	21.2 g	24%
Fibre	1 g		0.9 g	
Protein	2.6 g	5%	2.4 g	5%
Salt	0.45 g	8%	0.4 g	7%
Serving Size	92 g			

SUPPLEMENTARY NUTRITIONAL INFORMATION

HFSS (HIGH IN FAT, SALT AND SUGAR)

HFSS Status	No
--------------------	----

HANDLING & STORAGE INFORMATION

Directions For Use

Ready to eat. Consume on opening.

Storage Instructions

Store in cool, dry conditions. Keep out of direct sunlight and away from sources of heat. Not suitable for refrigeration or freezing.

Shelf Life from Time of Production	119 Days
---	----------

ACCREDITATIONS/ CERTIFICATIONS/ ASSURANCE SCHEMES ORIGIN

Other Accreditation	IFSS Food Standard
Roundtable of Sustainable Palm Oil (RSPO)	

Product Country of Origin/Place of Provenance	United Kingdom
--	----------------

PRODUCT CHARACTERISTICS

Standards Testing

Do you undertake trend analysis of microbiological results? Yes

Is shelf life testing undertaken? Yes

Microbiological Standards

Organism	Description	Frequency	Target	Maximum	Sample (g or ml)
E. Coli (cfu/g or ml)		Occasionally	<10	10	100
Listeria SPP (cfu/g or ml)		Occasionally	<0	0	25
Staphylococcus Aureus (cfu/g or ml)		Occasionally	<20	20	100
Total Viable Count (TVC) (cfu/g or ml)		Occasionally	<100	1000	100
Salmonella (cfu/g or ml)		Occasionally	<0	0	25
Yeast (cfu/g or ml)		Occasionally	<50	250	100
Moulds (cfu/g or ml)		Occasionally	<50	250	100

Analytical Standards

Test	Description	Frequency	Target	Range	Sample (g or ml)
Moisture (%)		Occasionally	<23	18 to 30	100

CONFIGURATION

Case Configuration

Inner Pack Configuration

Total Quantity of Inner Components in Outer Case 16 Units

Is the Outer Case Splittable? No

PRODUCT WEIGHTS

Inner Component

Variable Weight Consumer Item Weight/Volume Yes

e92g

Outer Case

Outer Case Gross Weight 1.71 kg

Outer Case Net Weight 1.47 kg

PRODUCT DIMENSIONS

Inner Component

Inner Component Depth 80 mm

Inner Component Width 80 mm

Inner Component Height 60 mm

Outer Case

Outer Case Depth 407 mm

Outer Case Width 373 mm

Outer Case Height 75 mm

PALLET INFORMATION

Quantity of Cases Per Pallet Layer 6 Cases

Pallet Height 1.6 MTR

Quantity of Layers Per Pallet 20 Layers

Pallet Gross Weight 228.93 kg

Quantity of Cases Per Pallet 120 Cases

PACKAGING

Inner Component Packaging

Type	Materials	Weight	Recycled Plastic %	Recyclable	Returnable	Composite
Film	Plastic	1 g	- %			
Film	Paper/Cardboard	1 g	- %			

Outer Case Packaging

Type	Materials	Weight	Recycled Plastic %	Recyclable	Returnable	Composite
Case	Plastic	21 g	- %			
Case	Paper/Cardboard	226 g	- %			

Transport Packaging

Type	Materials	Weight	Recycled Plastic %	Recyclable	Returnable	Composite
Other	Plastic	555 g	- %			
Other	Paper/Cardboard	2100 g	- %			
Other	Wood	20000 g	- %			

OTHER
INFORMATION

Intrastat/Taric Code	1905
Commodity Code	1905907000

Manufacturer Comments

Minimum order quantities to be agreed with Food Connections

Double Choc Flavour

Inner Component GTIN	5027870200052
Manufacturer Component Code	Double Choc Flavour
Outer Case GTIN	05027870202605



INGREDIENTS

Ingredient Declaration

Sugar, **WHEAT** flour [with calcium, iron, niacin & thiamine], Water, Rapeseed oil, Humectants: Glycerine & Glucose syrup. (Glucose syrup, Water, Acidity regulator: E260.), Fat reduced cocoa powder, Chocolate flavour chips (4%)(Sugar, Vegetable fat (Palm Oil)), Fat reduced cocoa powder, Emulsifiers: **SOYA** lecithin & Sorbitan tristearate, Natural Flavouring.), **WHEAT** starch, Skimmed **MILK** powder, Whole dried **EGG**, Raising agents: Sodium acid pyrophosphate & Potassium bicarbonate. Dextrose monohydrate, Whey powder [from **MILK**], Preservative: Potassium sorbate. Salt, Stabiliser: Xanthan gum.

ALLERGENS

Product Contains:

Celery/Celery	No	Mustard	No
Cereals Containing Gluten	Yes	Nuts (Tree)	May Contain
Barley	No	Almond nuts	May Contain
Oats	May Contain	Brazil nuts	No
Rye	No	Cashew nuts	No
Wheat (including Spelt and Khorasan)	Yes	Hazelnuts	No
Gluten content <20ppm	No	Macadamia (Queensland) nuts	No
Crustacea	No	Pecan nuts	No
Eggs	Yes	Pistachio nuts	No
Fish	No	Walnuts	No
Lupin	No	Peanuts	No
Milk	Yes	Sesame Seeds	No
Molluscs	No	Soybeans	Yes
		Sulphur Dioxide and Sulphites	No

Risk Source:

Additional Allergen Information

Allergens, including cereals containing gluten, are shown in the ingredients list in BOLD CAPITALS. May contain traces of other cereals containing gluten, soya and nuts as this product was made in premises where these ingredients are used. WHEAT, EGG, MILK, SOYA

SUPPLEMENTARY INGREDIENT INFORMATION

Palm Oil	Yes
Hydrogenated Vegetable Oil/Fat	No
GM Protein/DNA	No

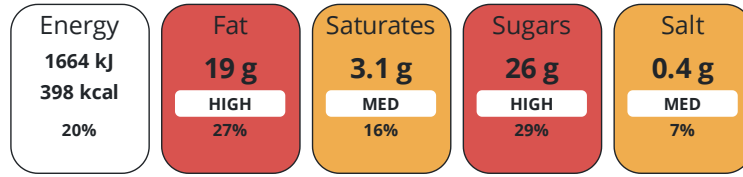
ADDITIVES

Product Contains:

DIET SUITABILITY

Suitable for Coeliacs	No	Artificial Preservatives	Yes
Kosher Diet	No	Halal Diet	Suitable for
Vegan Diet	No	Vegetarian Diet	Suitable for

Each 100g/ml portion contains:



of your reference intake.

Typical values per 100g/ml : Energy 398kcal / 1664kJ

Nutrient	per 100g/ml	RI per 100g/ml	per 92g/ml serving	RI per 92g/ml serving
Energy (kJ)	1664 kJ	20%	1530.9 kJ	18%
Energy (kcal)	398 kcal	20%	366.2 kcal	18%
Fat	19 g	27%	17.5 g	25%
of which Saturates	3.1 g	16%	2.9 g	15%
Carbohydrate	52 g	20%	47.8 g	18%
of which Sugars	26 g	29%	23.9 g	27%
Fibre	2 g		1.8 g	
Protein	3.5 g	7%	3.2 g	6%
Salt	0.4 g	7%	0.4 g	7%
Serving Size	92 g			

SUPPLEMENTARY
NUTRITIONAL
INFORMATION

HFSS (HIGH IN
FAT, SALT AND
SUGAR)
HANDLING &
STORAGE
INFORMATION

HFSS Status No

Directions For Use

Ready to eat snack. Consume on opening.

Storage Instructions

Store in cool, dry conditions. Keep out of direct sunlight and away from sources of heat. Not suitable for refrigeration or freezing.

Shelf Life from Time of Production 119 Days

ACCREDITATIONS/
CERTIFICATIONS/
ASSURANCE
SCHEMES
ORIGIN

Other Accreditation

Roundtable of Sustainable Palm Oil (RSPO)

IFS Food Standard

Product Country of Origin/Place of United Kingdom

Provenance

Standards Testing

PRODUCT
CHARACTERISTICS

Do you undertake trend analysis of Yes

microbiological results?

Is shelf life testing undertaken? Yes

Microbiological Standards

Organism	Description	Frequency	Target	Maximum	Sample (g or ml)
E. Coli (cfu/g or ml)		Occasionally	<10	10	100
Listeria Monocytogenes (cfu/g or ml)		Occasionally	<0	0	25
Staphylococcus Aureus (cfu/g or ml)		Occasionally	<20	20	100

Organism	Description	Frequency	Target	Maximum	Sample (g or ml)
Total Viable Count (TVC) (cfu/g or ml)		Occasionally	<100	1000	100
Salmonella (cfu/g or ml)		Occasionally	<0	0	25
Yeast (cfu/g or ml)		Occasionally	<50	250	100
Moulds (cfu/g or ml)		Occasionally	<50	250	100

Analytical Standards

Test	Description	Frequency	Target	Range	Sample (g or ml)
Moisture (%)		Occasionally	<23	18 to 30	100

CONFIGURATION

Case Configuration Inner Pack Configuration

Total Quantity of Inner Components in Outer Case 16 Units

Is the Outer Case Splittable? No

PRODUCT WEIGHTS

Inner Component

Variable Weight Consumer Item Yes

Weight/Volume

e92g

Outer Case

Outer Case Gross Weight 1.71 kg

Outer Case Net Weight 1.47 kg

PRODUCT DIMENSIONS

Inner Component

Inner Component Depth 80 mm

Inner Component Width 80 mm

Inner Component Height 60 mm

Outer Case

Outer Case Depth 407 mm

Outer Case Width 373 mm

Outer Case Height 75 mm

PALLET INFORMATION

Quantity of Cases Per Pallet Layer 6 Cases **Pallet Height** 1.6 MTR

Quantity of Layers Per Pallet 20 Layers **Pallet Gross Weight** 228.93 kg

Quantity of Cases Per Pallet 120 Cases

PACKAGING

Inner Component Packaging

Type	Materials	Weight	Recycled Plastic %	Recyclable	Returnable	Composite
Film	Plastic	1 g	- %			
Film	Paper/Cardboard	1 g	- %			

Outer Case Packaging

Type	Materials	Weight	Recycled Plastic %	Recyclable	Returnable	Composite
Case	Plastic	21 g	- %			
Case	Paper/Cardboard	226 g	- %			

Transport Packaging

Type	Materials	Weight	Recycled Plastic %	Recyclable	Returnable	Composite
Other	Plastic	555 g	- %			
Other	Paper/Cardboard	2100 g	- %			
Other	Wood	20000 g	- %			

OTHER
INFORMATION

Intrastat/Taric Code	1905
Commodity Code	1905907000

Manufacturer Comments

Minimum order quantities to be agreed with Food Connections

Cherry

Inner Component GTIN 5027870200038

Manufacturer Component Code Cherry

Outer Case GTIN 05027870202605



INGREDIENTS

Ingredient Declaration

WHEAT flour [with added calcium, iron, niacin & thiamine], Sugar, Water, Rapeseed oil, Humectants: Glycerine & Glucose syrup. (Glucose syrup, Water, Acidity regulator: E260.), Glace cherries (6%) (Cherries, Glucose-Fructose syrup, Sugar, Acidity Regulator: Citric acid. Preservative: Potassium sorbate. Colour: Erythrosine.), Whole dried **EGG**, **WHEAT** starch, Skimmed **MILK** powder, Raising agents: Sodium acid pyrophosphate & Potassium bicarbonate. Dextrose Monohydrate, Pregelatinised Maize Starch, Whey powder [from **MILK**], Rice Starch, Preservative: Potassium sorbate. Emulsifiers: Polyglycerol esters of fatty acids, Mono- & di-glycerides of fatty acids & Sodium stearoyl-2 lactylate. Salt, Stabiliser: Xanthan gum. Natural flavouring

ALLERGENS

Product Contains:

Celery/Celeriac	No	Mustard	No
Cereals Containing Gluten	Yes	Nuts (Tree)	May Contain
Barley	No	Almond nuts	May Contain
Oats	May Contain	Brazil nuts	No
Rye	No	Cashew nuts	No
Wheat (including Spelt and Khorasan)	Yes	Hazelnuts	No
Gluten content <20ppm	No	Macadamia (Queensland) nuts	No
Crustacea	No	Pecan nuts	No
Eggs	Yes	Pistachio nuts	No
Fish	No	Walnuts	No
Lupin	No	Peanuts	No
Milk	Yes	Sesame Seeds	No
Molluscs	No	Soybeans	May Contain
		Sulphur Dioxide and Sulphites	No

Risk Source:

Additional Allergen Information

Allergens, including cereals containing gluten, are shown in the ingredients list in BOLD CAPITALS. May contain traces of other cereals containing gluten, soya and nuts as this product was made in premises where these ingredients are used. WHEAT, EGG, MILK

SUPPLEMENTARY INGREDIENT INFORMATION

Palm Oil	No
Hydrogenated Vegetable Oil/Fat	No
GM Protein/DNA	No

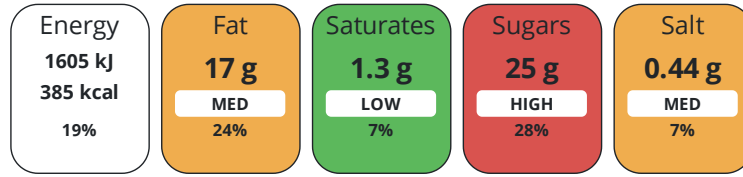
ADDITIVES

Product Contains:

Artificial Colours	Yes	Artificial Preservatives	Yes
Suitable for Coeliacs	No	Halal Diet	Suitable for
Kosher Diet	No	Vegetarian Diet	Suitable for
Vegan Diet	No		

DIET SUITABILITY

Each 100g/ml portion contains:



of your reference intake.

Typical values per 100g/ml : Energy 385kcal / 1605kJ

Nutrient	per 100g/ml	RI per 100g/ml	per 92g/ml serving	RI per 92g/ml serving
Energy (kJ)	1605 kJ	19%	1476.6 kJ	18%
Energy (kcal)	385 kcal	19%	354.2 kcal	18%
Fat	17 g	24%	15.6 g	22%
of which Saturates	1.3 g	7%	1.2 g	6%
Carbohydrate	55 g	21%	50.6 g	19%
of which Sugars	25 g	28%	23 g	26%
Fibre	0.8 g		0.7 g	
Protein	2.6 g	5%	2.4 g	5%
Salt	0.44 g	7%	0.4 g	7%
Serving Size	92 g			

SUPPLEMENTARY
NUTRITIONAL
INFORMATION

HFSS (HIGH IN
FAT, SALT AND
SUGAR)
HANDLING &
STORAGE
INFORMATION

HFSS Status No

Directions For Use

Ready to eat snack. Consume on opening.

Storage Instructions

Store in cool, dry conditions. Keep out of direct sunlight and away from sources of heat. Not suitable for refrigeration or freezing.

Shelf Life from Time of Production 119 Days

ACCREDITATIONS/
CERTIFICATIONS/
ASSURANCE
SCHEMES
ORIGIN

Other Accreditation

Roundtable of Sustainable Palm Oil (RSPO)

IFS Food Standard

Product Country of Origin/Place of United Kingdom

Provenance

Standards Testing

PRODUCT
CHARACTERISTICS

Do you undertake trend analysis of Yes

microbiological results?

Is shelf life testing undertaken? Yes

Microbiological Standards

Organism	Description	Frequency	Target	Maximum	Sample (g or ml)
E. Coli (cfu/g or ml)		Occasionally	<10	10	100
Listeria SPP (cfu/g or ml)		Occasionally	<0	0	25
Staphylococcus Aureus (cfu/g or ml)		Occasionally	<20	20	100

Organism	Description	Frequency	Target	Maximum	Sample (g or ml)
Total Viable Count (TVC) (cfu/g or ml)		Occasionally	<100	1000	100
Salmonella (cfu/g or ml)		Occasionally	<0	0	25
Yeast (cfu/g or ml)		Occasionally	<50	250	100
Moulds (cfu/g or ml)		Occasionally	<50	250	100

Analytical Standards

Test	Description	Frequency	Target	Range	Sample (g or ml)
Moisture (%)		Occasionally	<23	18 to 30	100

CONFIGURATION

Case Configuration Inner Pack Configuration

Total Quantity of Inner Components in Outer Case 16 Units

Is the Outer Case Splittable? No

PRODUCT WEIGHTS

Inner Component

Variable Weight Consumer Item Yes

Weight/Volume

e92g

Outer Case

Outer Case Gross Weight 1.71 kg

Outer Case Net Weight 1.47 kg

PRODUCT DIMENSIONS

Inner Component

Inner Component Depth 80 mm

Inner Component Width 80 mm

Inner Component Height 60 mm

Outer Case

Outer Case Depth 407 mm

Outer Case Width 373 mm

Outer Case Height 75 mm

PALLET INFORMATION

Quantity of Cases Per Pallet Layer 6 Cases **Pallet Height** 1.6 MTR

Quantity of Layers Per Pallet 20 Layers **Pallet Gross Weight** 228.93 kg

Quantity of Cases Per Pallet 120 Cases

PACKAGING

Inner Component Packaging

Type	Materials	Weight	Recycled Plastic %	Recyclable	Returnable	Composite
Film	Plastic	1 g	- %			
Film	Paper/Cardboard	1 g	- %			

Outer Case Packaging

Type	Materials	Weight	Recycled Plastic %	Recyclable	Returnable	Composite
Case	Plastic	21 g	- %			
Case	Paper/Cardboard	226 g	- %			

Transport Packaging

Type	Materials	Weight	Recycled Plastic %	Recyclable	Returnable	Composite
Other	Plastic	555 g	- %			
Other	Paper/Cardboard	2100 g	- %			
Other	Wood	20000 g	- %			

OTHER
INFORMATION

Intrastat/Taric Code	1905
Commodity Code	1905907000

Manufacturer Comments

Minimum order quantities to be agreed with Food Connections

Chocolate Flavour Chip

Inner Component GTIN 5027870200045

Manufacturer Component Code Chocolate Flav Chip

Outer Case GTIN 05027870202605



INGREDIENTS

Ingredient Declaration

WHEAT flour [with added calcium, iron, niacin & thiamine], Sugar, Water, Rapeseed oil, Humectants: Glycerine & Glucose syrup. (Glucose syrup, Water, Acidity regulator: E260.), Chocolate flavour chips (4%)(Sugar, Vegetable fat (Palm Oil)), Fat reduced cocoa powder, Emulsifier: **SOYA** lecithin & Sorbitan tristearate, Natural Flavouring.), Whole dried **EGG**, **WHEAT** starch, Skimmed **MILK** powder, Raising agents: Sodium acid pyrophosphate & Potassium bicarbonate. Dextrose Monohydrate, Pregelatinised Maize Starch, Whey powder [from **MILK**], Rice Starch, Preservative: Potassium sorbate. Emulsifiers: Polyglycerol esters of fatty acids, Mono- & di-glycerides of fatty acids & Sodium stearyl-2 lactylate. Salt, Stabiliser: Xanthan gum. Natural flavouring

ALLERGENS

Product Contains:

Celery/Celery	No	Mustard	No
Cereals Containing Gluten	Yes	Nuts (Tree)	May Contain
Barley	No	Almond nuts	May Contain
Oats	May Contain	Brazil nuts	No
Rye	No	Cashew nuts	No
Wheat (including Spelt and Khorasan)	Yes	Hazelnuts	No
Gluten content <20ppm	No	Macadamia (Queensland) nuts	No
Crustacea	No	Pecan nuts	No
Eggs	Yes	Pistachio nuts	No
Fish	No	Walnuts	No
Lupin	No	Peanuts	No
Milk	Yes	Sesame Seeds	No
Molluscs	No	Soybeans	Yes
		Sulphur Dioxide and Sulphites	No

Risk Source:

Additional Allergen Information

Allergens, including cereals containing gluten, are shown in the ingredients list in BOLD CAPITALS. May contain traces of other cereals containing gluten, soya and nuts as this product was made in premises where these ingredients are used. WHEAT, EGG, MILK, SOYA

SUPPLEMENTARY INGREDIENT INFORMATION

Palm Oil	Yes
Hydrogenated Vegetable Oil/Fat	No
GM Protein/DNA	No

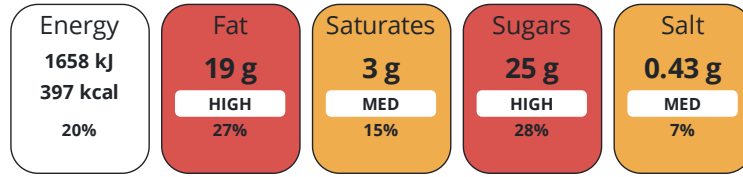
ADDITIVES

Product Contains:

DIET SUITABILITY

Suitable for Coeliacs	No	Artificial Preservatives	Yes
Kosher Diet	No	Halal Diet	Suitable for
Vegan Diet	No	Vegetarian Diet	Suitable for

Each 100g/ml portion contains:



of your reference intake.

Typical values per 100g/ml : Energy 397kcal / 1658kJ

Nutrient	per 100g/ml	RI per 100g/ml	per 92g/ml serving	RI per 92g/ml serving
Energy (kJ)	1658 kJ	20%	1525.4 kJ	18%
Energy (kcal)	397 kcal	20%	365.2 kcal	18%
Fat	19 g	27%	17.5 g	25%
of which Saturates	3 g	15%	2.8 g	14%
Carbohydrate	54 g	21%	49.7 g	19%
of which Sugars	25 g	28%	23 g	26%
Fibre	0.8 g		0.7 g	
Protein	2.7 g	5%	2.5 g	5%
Salt	0.43 g	7%	0.4 g	7%
Serving Size	92 g			

SUPPLEMENTARY NUTRITIONAL INFORMATION

HFSS (HIGH IN FAT, SALT AND SUGAR)
HANDLING & STORAGE INFORMATION

HFSS Status	No
Directions For Use	Ready to eat snack. Consume on opening.
Storage Instructions	Store in cool, dry conditions. Keep out of direct sunlight and away from sources of heat. Not suitable for refrigeration or freezing.
Shelf Life from Time of Production	119 Days

ACCREDITATIONS/ CERTIFICATIONS/ ASSURANCE SCHEMES ORIGIN

Other Accreditation	IFS Food Standard
Roundtable of Sustainable Palm Oil (RSPO)	
Product Country of Origin/Place of Provenance	United Kingdom

PRODUCT CHARACTERISTICS

Standards Testing		Is shelf life testing undertaken?	Yes
Do you undertake trend analysis of microbiological results?	Yes		

Microbiological Standards

Organism	Description	Frequency	Target	Maximum	Sample (g or ml)
E. Coli (cfu/g or ml)		Occasionally	<10	10	100
Listeria SPP (cfu/g or ml)		Occasionally	<0	0	25
Staphylococcus Aureus (cfu/g or ml)		Occasionally	<20	20	100

Organism	Description	Frequency	Target	Maximum	Sample (g or ml)
Total Viable Count (TVC) (cfu/g or ml)		Occasionally	<100	1000	100
Salmonella (cfu/g or ml)		Occasionally	<0	0	25
Yeast (cfu/g or ml)		Occasionally	<50	250	100
Moulds (cfu/g or ml)		Occasionally	<50	250	100

Analytical Standards

Test	Description	Frequency	Target	Range	Sample (g or ml)
Moisture (%)		Occasionally	<23	18 to 30	100

CONFIGURATION

Case Configuration Inner Pack Configuration

Total Quantity of Inner Components in Outer Case 16 Units

Is the Outer Case Splittable? No

PRODUCT WEIGHTS

Inner Component

Variable Weight Consumer Item Yes

Weight/Volume

e92g

Outer Case

Outer Case Gross Weight 1.71 kg

Outer Case Net Weight 1.47 kg

PRODUCT DIMENSIONS

Inner Component

Inner Component Depth 80 mm

Inner Component Width 80 mm

Inner Component Height 60 mm

Outer Case

Outer Case Depth 407 mm

Outer Case Width 373 mm

Outer Case Height 75 mm

PALLET INFORMATION

Quantity of Cases Per Pallet Layer 6 Cases **Pallet Height** 1.6 MTR

Quantity of Layers Per Pallet 20 Layers **Pallet Gross Weight** 228.93 kg

Quantity of Cases Per Pallet 120 Cases

PACKAGING

Inner Component Packaging

Type	Materials	Weight	Recycled Plastic %	Recyclable	Returnable	Composite
Film	Plastic	1 g	- %			
Film	Paper/Cardboard	1 g	- %			

Outer Case Packaging

Type	Materials	Weight	Recycled Plastic %	Recyclable	Returnable	Composite
Case	Plastic	21 g	- %			
Case	Paper/Cardboard	226 g	- %			

Transport Packaging

Type	Materials	Weight	Recycled Plastic %	Recyclable	Returnable	Composite
Other	Plastic	555 g	- %			
Other	Paper/Cardboard	2100 g	- %			
Other	Wood	20000 g	- %			

OTHER INFORMATION

Intrastat/Taric Code	1905
Commodity Code	1905907000

Manufacturer Comments

Minimum order quantities to be agreed with Food Connections

CONTACT INFORMATION

Address

Food Connections Ltd
 Quorn House, Comet Way
 Hermitage Industrial Estate
 Coalville
 Leicestershire
 LE67 3FS
 United Kingdom

P: (Phone) 01530 830180

Complaints Contact

Gillian Currie
 Technical Manager
 gillian.currie@foodconnections.co.uk

P: (Phone) 01530 830180

Technical Contact

Gillian Currie
 Technical Manager
 gillian.currie@foodconnections.co.uk

P: (Phone) 01530 830180

The information on the [Erudus System](#) has been supplied by the manufacturers of the products and, whilst the owners of the Erudus System take steps to ensure the information is regularly updated, they give no warranty and no guarantee that the information is accurate. Product information and ingredients may change, please always read product labels carefully in addition to using the information provided by Erudus.

We do not accept liability for any inaccuracies or incorrect information contained on this site.
 Please visit <http://www.erudus.com/terms-and-conditions> for full terms and conditions.