


Changed Feb 07, 2024 17:05

Reviewed Feb 07, 2024 17:05

Erudus ID 1f3243298a704044bb3f62c4ecbe3e14

Version 2.1



RECEIVED

Thomas Ridley QC Dept.  
11:20 am, 9 Feb 2024

The food information supplied by Thomas Ridley Foodservice has been provided by the respective product manufacturers. Whilst we use reasonable endeavours to check this information and ensure its accuracy, we do not give any warranty (whether express or implied), guarantee or representation that it is true, accurate or complete in any respect.

As product information, ingredients, nutritional guides and dietary or allergy advice may change from time to time, we recommend that you always carefully read the product label prior to using or consuming any such products. You should not solely rely upon the information we provide and make your own assessment as to the suitability or otherwise of any given product.



# Food Connections Topped Mix Muffins 1 x 16

Food Connections Topped Mix Muffins (Multipack)

## PRODUCT DESCRIPTION

Comprising of 4 each of Double Choc, Toffee, Cherry Bakewell, Rainbow

<b>Brand</b>	Food Connections Ltd
<b>Manufacturer Product Code</b>	FCMFTP004/16
<b>Product Type</b>	Food
<b>Product Category</b>	Cookies, Muffins & Doughnuts
<b>Storage Type</b>	Ambient
<b>Erudus ID</b>	1f3243298a704044bb3f62c4ecbe3e14
<b>Specification Type</b>	Bakery Products



## Toffee

<b>Inner Component GTIN</b>	5027870204869
<b>Manufacturer Component Code</b>	Toffee
<b>Outer Case GTIN</b>	05027870202643



## INGREDIENTS

### Ingredient Declaration

**WHEAT** Flour\*, Sugar, Rapeseed Oil, Water, Humectants: Glycerine & Glucose Syrup (Glucose Syrup, Water, Acidity Regulator: Acetic Acid), Toffee Flavour Topping (9%) (Sugar, Palm Oil, Whey Powder (**MILK**), **WHEAT** Flour\*, Fat Reduced Cocoa Powder, Cocoa Butter, Emulsifier: Lecithin (**SOYA**), Natural flavouring, Colour: Beta Carotenes), Caramel Pieces (5%) (Condensed Skimmed Milk Sweetened (Skimmed **MILK**, Sugar), Sugar, Glucose Syrup, Butterfat (**MILK**), Humectant: Sorbitol Syrup, Emulsifier: Mono- & di-Glycerides of Fatty Acids), Whole Dried **EGG**, **WHEAT** Starch, Skimmed **MILK** Powder, Raising Agents: Sodium acid pyrophosphate, Sodium bicarbonate & Potassium bicarbonate, Dextrose Monohydrate, Pregelatinised Maize Starch, Whey Powder (**MILK**), Rice Starch, Preservative: Potassium Sorbate, Emulsifiers: Polyglycerol Esters of Fatty Acids, Mono- & di-Glycerides of Fatty Acids & Sodium Stearoyl-2 Lactylate, Salt, Natural Flavourings, Colour: Plain Caramel, Stabiliser: Xanthan Gum.

\*Wheat Flour is with added Calcium, Iron, Niacin & Thiamine

ALLERGENS

Product Contains:

<b>Celery/Celeriac</b>	No
<b>Cereals Containing Gluten</b>	Yes
<b>Barley</b>	May Contain
<b>Oats</b>	May Contain
<b>Rye</b>	No
<b>Wheat (including Spelt and Khorasan)</b>	Yes
<b>Crustacea</b>	No
<b>Eggs</b>	Yes
<b>Fish</b>	No
<b>Lupin</b>	No
<b>Milk</b>	Yes
<b>Molluscs</b>	No

<b>Mustard</b>	No
<b>Nuts (Tree)</b>	May Contain
<b>Almond nuts</b>	May Contain
<b>Brazil nuts</b>	No
<b>Cashew nuts</b>	No
<b>Hazelnuts</b>	No
<b>Macadamia (Queensland) nuts</b>	No
<b>Pecan nuts</b>	May Contain
<b>Pistachio nuts</b>	No
<b>Walnuts</b>	No
<b>Peanuts</b>	No
<b>Sesame Seeds</b>	No
<b>Soybeans</b>	Yes
<b>Sulphur Dioxide and Sulphites</b>	No

Risk Source:

**Additional Allergen Information**

Allergy advice: Allergens, including cereals containing gluten, are shown in the ingredients list in BOLD CAPITALS. May contain traces of other cereals containing gluten and nuts as this product was made in premises where these ingredients are used. MILK, WHEAT, SOYA, EGG

SUPPLEMENTARY INGREDIENT INFORMATION

<b>Palm Oil</b>	Yes
<b>Hydrogenated Vegetable Oil/Fat</b>	No
<b>GM Protein/DNA</b>	No

ADDITIVES

Product Contains:

<b>Artificial Antioxidants</b>	No
<b>Artificial Colours</b>	No
<b>Artificial Flavour Enhancers</b>	No

<b>Artificial Flavourings</b>	No
<b>Artificial Preservatives</b>	Yes
<b>Artificial Sweeteners</b>	No

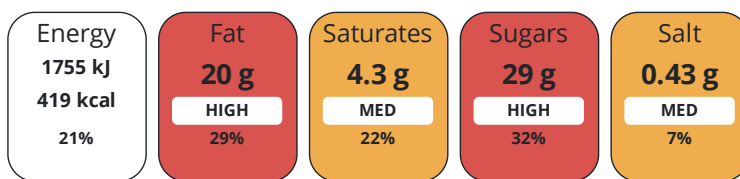
DIET SUITABILITY

<b>Vegan Diet</b>	No
<b>Halal Diet</b>	No

<b>Vegetarian Diet</b>	Suitable for
<b>Kosher Diet</b>	No

NUTRITIONAL INFORMATION

Each 100g/ml portion contains:



of your reference intake.

Typical values per 100g/ml : Energy 419kcal / 1755kj

Nutrient	per 100g	RI per 100g	per 105g serving	RI per 105g serving
Energy (kJ)	1755 kJ	21%	1842.8 kJ	22%
Energy (kcal)	419 kcal	21%	440 kcal	22%
Fat	20 g	29%	21 g	30%
of which Saturates	4.3 g	22%	4.5 g	23%
Carbohydrate	57 g	22%	59.9 g	23%
of which Sugars	29 g	32%	30.5 g	34%
Fibre	0.8 g		0.8 g	
Protein	3.8 g	8%	4 g	8%
Salt	0.43 g	7%	0.5 g	8%
Serving Size	105 g			

SUPPLEMENTARY NUTRITIONAL INFORMATION

HFSS (HIGH IN FAT, SALT AND SUGAR) HANDLING & STORAGE INFORMATION

HFSS Status	No			
Directions For Use	Ready to eat snack. Consume on opening.			
Storage Instructions	Store in cool, dry conditions. Keep out of direct sunlight and away from sources of heat. Not suitable for refrigeration or freezing.			
Shelf Life from Time of Production	119 Days	Exempt From Shelf Life Labelling	No	

ACCREDITATIONS/ CERTIFICATIONS/ ASSURANCE SCHEMES



Other Accreditation

IFS Food Version 7, October 2020 - Higher Level

ORIGIN

Product Country of Origin/Place of Provenance United Kingdom

Provenance

Additional Origin Details

Country of origin - vary. Manufactured in UK

PRODUCT CHARACTERISTICS

Standards Testing

Do you undertake trend analysis of microbiological results?	Yes	Is shelf life testing undertaken?	Yes	
---	-----	-----------------------------------	-----	--

Microbiological Standards

Organism	Description	Frequency	Target	Maximum	Sample (g or ml)
Total Viable Count (TVC) (cfu/g or ml)		Occasionally	<100	1000	100
Staphylococcus Aureus (cfu/g or ml)		Occasionally	<20	20	100
E. Coli (cfu/g or ml)		Occasionally	<10	10	100
Salmonella (cfu/g or ml)		Occasionally	=0	0	25
Listeria SPP (cfu/g or ml)		Occasionally	=0	0	25
Yeast (cfu/g or ml)		Occasionally	<50	250	100

Organism	Description	Frequency	Target	Maximum	Sample (g or ml)
Moulds (cfu/g or ml)		Occasionally	<50	250	100

Analytical Standards

Test	Description	Frequency	Target	Range	Sample (g or ml)
Moisture (%)		Occasionally	=23	18 to 28	100

CONFIGURATION

Case Configuration Inner Pack Configuration

**Total Quantity of Inner Components in** 16 Units

**Outer Case**

**Is the Outer Case Splittable?** No

PRODUCT WEIGHTS

Inner Component

**Variable Weight Consumer Item** Yes

Outer Case

**Outer Case Gross Weight** 1.96 kg

**Outer Case Net Weight** 1.68 kg

PRODUCT DIMENSIONS

Inner Component

**Inner Component Depth** 60 mm

**Inner Component Width** 75 mm

**Inner Component Height** 75 mm

Outer Case

**Outer Case Depth** 407 mm

**Outer Case Width** 373 mm

**Outer Case Height** 75 mm

PALLET INFORMATION

**Non Palletised** Yes

PACKAGING

Inner Component Packaging

Type	Materials	Weight	Recycled Plastic %	Recyclable	Returnable	Composite
Film	Plastic	1.5 g	- %			
Film	Paper/Cardboard	0.5 g	- %			

Outer Case Packaging

Type	Materials	Weight	Recycled Plastic %	Recyclable	Returnable	Composite
Case	Plastic	24 g	- %			
Case	Paper/Cardboard	253 g	- %			

Transport Packaging

Type	Materials	Weight	Recycled Plastic %	Recyclable	Returnable	Composite
Other	Plastic	500 g	- %			
Other	Paper/Cardboard	3600 g	- %			
Other	Wood	20000 g	- %			

OTHER INFORMATION

**Intrastat/Taric Code** 1905

**Commodity Code** 1905907000

**Manufacturer Comments**

Minimum order quantities to be discussed and agreed with Food Connections

# Double Choc

Inner Component GTIN	5027870204883
Manufacturer Component Code	Double Choc
Outer Case GTIN	05027870202643



## INGREDIENTS

### Ingredient Declaration

Sugar, **WHEAT** flour (with added Calcium, Iron, niacin & thiamine), Rapeseed oil, Water, Humectants: Glycerine & Glucose syrup (Glucose syrup, Water, Acidity regulator: Acetic acid), Chocolate flavour topping (11%) (Sugar, Palm oil, Whey powder (**MILK**), **WHEAT** Flour (with added calcium, iron, niacin & thiamine), Fat reduced cocoa powder, Emulsifiers: Lecithin (**SOYA**) & Polyglycerol polyricinoleate, Natural flavouring), Fat reduced cocoa powder (4%), **WHEAT** starch, Skimmed **MILK** powder, Whole dried **EGG**, Raising agents: Sodium acid pyrophosphate & Potassium bicarbonate, Dextrose monohydrate, Whey powder (from: **MILK**), Preservative: Potassium sorbate, Salt, Stabiliser: Xanthan gum.

## ALLERGENS

Product Contains:

<b>Celery/Celeriac</b>	No	<b>Mustard</b>	No
<b>Cereals Containing Gluten</b>	Yes	<b>Nuts (Tree)</b>	May Contain
<b>Barley</b>	May Contain	<b>Almond nuts</b>	May Contain
<b>Oats</b>	May Contain	<b>Brazil nuts</b>	May Contain
<b>Rye</b>	May Contain	<b>Cashew nuts</b>	May Contain
<b>Wheat (including Spelt and Khorasan)</b>	Yes	<b>Hazelnuts</b>	May Contain
<b>Crustacea</b>	No	<b>Macadamia (Queensland) nuts</b>	May Contain
<b>Eggs</b>	Yes	<b>Pecan nuts</b>	May Contain
<b>Fish</b>	No	<b>Pistachio nuts</b>	May Contain
<b>Lupin</b>	No	<b>Walnuts</b>	May Contain
<b>Milk</b>	Yes	<b>Peanuts</b>	No
<b>Molluscs</b>	No	<b>Sesame Seeds</b>	No
		<b>Soybeans</b>	Yes
		<b>Sulphur Dioxide and Sulphites</b>	No

Risk Source:

### Additional Allergen Information

Allergy advice: Allergens, including cereals containing gluten, are shown in the ingredients list in BOLD CAPITALS. May contain traces of other cereals containing gluten and nuts as this product was made in premises where these ingredients are used. WHEAT, MILK, SOYA, EGG

## SUPPLEMENTARY INGREDIENT INFORMATION

<b>Palm Oil</b>	Yes
<b>Hydrogenated Vegetable Oil/Fat</b>	No
<b>GM Protein/DNA</b>	No

## ADDITIVES

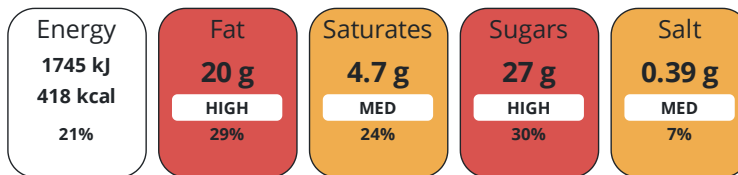
Product Contains:

<b>Artificial Antioxidants</b>	No	<b>Artificial Flavourings</b>	No
<b>Artificial Colours</b>	No	<b>Artificial Preservatives</b>	Yes
<b>Artificial Flavour Enhancers</b>	No	<b>Artificial Sweeteners</b>	No

## DIET SUITABILITY

<b>Vegan Diet</b>	No	<b>Vegetarian Diet</b>	Suitable for
<b>Halal Diet</b>	No	<b>Kosher Diet</b>	No

Each 100g/ml portion contains:



of your reference intake.

Typical values per 100g/ml : Energy 418kcal / 1745kJ

Nutrient	per 100g	RI per 100g	per 105g serving	RI per 105g serving
Energy (kJ)	1745 kJ	21%	1832.3 kJ	22%
Energy (kcal)	418 kcal	21%	438.9 kcal	22%
Fat	20 g	29%	21 g	30%
of which Saturates	4.7 g	24%	4.9 g	25%
Carbohydrate	54 g	21%	56.7 g	22%
of which Sugars	27 g	30%	28.4 g	32%
Fibre	2 g		2.1 g	
Protein	4.2 g	8%	4.4 g	9%
Salt	0.39 g	7%	0.4 g	7%
Serving Size	105 g			

SUPPLEMENTARY  
NUTRITIONAL  
INFORMATION

HFSS (HIGH IN  
FAT, SALT AND  
SUGAR)  
HANDLING &  
STORAGE  
INFORMATION

**HFSS Status** No

**Directions For Use**

Ready to eat snack. Consume on opening.

**Storage Instructions**

Store in cool, dry conditions. Keep out of direct sunlight and away from sources of heat. Not suitable for refrigeration or freezing.

**Shelf Life from Time of Production** 119 Days

**Exempt From Shelf Life Labelling** No

ACCREDITATIONS/  
CERTIFICATIONS/  
ASSURANCE  
SCHEMES



**Other Accreditation**

IFS Food Version 7, October 2020 - Higher Level

ORIGIN

**Product Country of Origin/Place of** United Kingdom

**Provenance**

**Additional Origin Details**

Country of origin - vary. Manufactured in UK

PRODUCT  
CHARACTERISTICS

Standards Testing

**Do you undertake trend analysis of microbiological results?** Yes

**Is shelf life testing undertaken?** Yes

Microbiological Standards

Organism	Description	Frequency	Target	Maximum	Sample (g or ml)
Total Viable Count (TVC) (cfu/g or ml)		Occasionally	<100	1000	100
Staphylococcus Aureus (cfu/g or ml)		Occasionally	<20	20	100
E. Coli (cfu/g or ml)		Occasionally	<10	10	100
Salmonella (cfu/g or ml)		Occasionally	=0	0	25
Listeria SPP (cfu/g or ml)		Occasionally	=0	0	25
Yeast (cfu/g or ml)		Occasionally	<50	250	100
Moulds (cfu/g or ml)		Occasionally	<50	250	100

Analytical Standards

Test	Description	Frequency	Target	Range	Sample (g or ml)
Moisture (%)		Occasionally	=23	18 to 28	100

CONFIGURATION

Case Configuration Inner Pack Configuration

**Total Quantity of Inner Components in Outer Case** 16 Units

**Is the Outer Case Splittable?** No

PRODUCT WEIGHTS

Inner Component

**Variable Weight Consumer Item** Yes

Outer Case

**Outer Case Gross Weight** 1.96 kg

**Outer Case Net Weight** 1.68 kg

PRODUCT DIMENSIONS

Inner Component

**Inner Component Depth** 60 mm

**Inner Component Width** 75 mm

**Inner Component Height** 75 mm

Outer Case

**Outer Case Depth** 407 mm

**Outer Case Width** 373 mm

**Outer Case Height** 75 mm

PALLET INFORMATION

**Non Palletised** Yes

PACKAGING

Inner Component Packaging

Type	Materials	Weight	Recycled Plastic %	Recyclable	Returnable	Composite
Film	Plastic	1.5 g	- %			
Film	Paper/Cardboard	0.5 g	- %			

Outer Case Packaging

Type	Materials	Weight	Recycled Plastic %	Recyclable	Returnable	Composite
Case	Plastic	24 g	- %			
Case	Paper/Cardboard	253 g	- %			

Transport Packaging

Type	Materials	Weight	Recycled Plastic %	Recyclable	Returnable	Composite
Other	Plastic	500 g	- %			
Other	Paper/Cardboard	3600 g	- %			
Other	Wood	20000 g	- %			

OTHER  
INFORMATION

<b>Intrastat/Taric Code</b>	1905
<b>Commodity Code</b>	1905907000

**Manufacturer Comments**

Minimum order quantities to be discussed and agreed with Food Connections



# Cherry Bakewell

Inner Component GTIN	5027870204890
Manufacturer Component Code	Cherry Bakewell
Outer Case GTIN	05027870202643



## INGREDIENTS

### Ingredient Declaration

**WHEAT** flour\*, Sugar, Rapeseed oil, Water, White chocolate flavour topping (11%) (Sugar, Palm oil, Whey powder (**MILK**), **WHEAT** flour\*, Emulsifier: **SOYA** lecithin, Natural flavouring), Humectants: Glycerine & Glucose syrup (Glucose syrup, Water, Acidity regulator: Acetic acid), Glace Cherries (7%)(Cherries, Glucose-Fructose syrup, Sugar, Acidity regulator: Citric acid, Preservative: Potassium sorbate, Colour: Erythrosine), Chocolate flavour topping (3%) (Sugar, Palm oil, Whey powder (**MILK**), **WHEAT** flour\*, Fat reduced cocoa powder, Emulsifiers: **SOYA** lecithin & Polyglycerol polyricinoleate, Natural flavouring), Whole dried **EGG**, **WHEAT** starch, Skimmed **MILK** powder, Raising agents: Sodium acid pyrophosphate & Potassium bicarbonate, Dextrose monohydrate, Pregelatinised maize starch, Whey powder (**MILK**), Rice starch, Preservative: Potassium sorbate, Emulsifiers: Polyglycerol esters of fatty acids, Mono- & di-Glycerides of fatty acids & Sodium stearoyl-2 lactylate, Natural flavourings, Salt, Stabiliser: Xanthan gum.  
 \* Wheat flour is with added Calcium, Iron, Niacin & Thiamine

## ALLERGENS

Product Contains:

<b>Celery/Celeriac</b>	No	<b>Mustard</b>	No
<b>Cereals Containing Gluten</b>	Yes	<b>Nuts (Tree)</b>	May Contain
<b>Barley</b>	May Contain	<b>Almond nuts</b>	May Contain
<b>Oats</b>	May Contain	<b>Brazil nuts</b>	No
<b>Rye</b>	No	<b>Cashew nuts</b>	No
<b>Wheat (including Spelt and Khorasan)</b>	Yes	<b>Hazelnuts</b>	No
<b>Crustacea</b>	No	<b>Macadamia (Queensland) nuts</b>	No
<b>Eggs</b>	Yes	<b>Pecan nuts</b>	May Contain
<b>Fish</b>	No	<b>Pistachio nuts</b>	No
<b>Lupin</b>	No	<b>Walnuts</b>	No
<b>Milk</b>	Yes	<b>Peanuts</b>	No
<b>Molluscs</b>	No	<b>Sesame Seeds</b>	No
		<b>Soybeans</b>	Yes
		<b>Sulphur Dioxide and Sulphites</b>	No

Risk Source:

### Additional Allergen Information

Allergy advice: Allergens, including cereals containing gluten, are shown in the ingredients list in BOLD CAPITALS. May contain traces of other cereals containing gluten and nuts as this product was made in premises where these ingredients are used.  
 WHEAT, MILK, SOYA, EGG

## SUPPLEMENTARY INGREDIENT INFORMATION

<b>Palm Oil</b>	Yes
<b>Hydrogenated Vegetable Oil/Fat</b>	No
<b>GM Protein/DNA</b>	No

## ADDITIVES

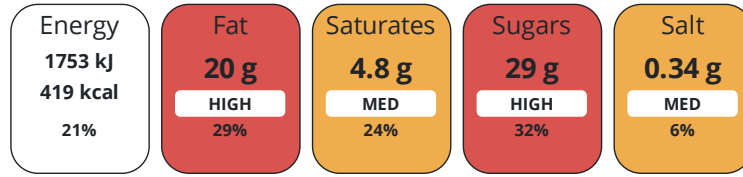
Product Contains:

<b>Artificial Antioxidants</b>	No	<b>Artificial Flavourings</b>	No
<b>Artificial Colours</b>	Yes	<b>Artificial Preservatives</b>	Yes
<b>Artificial Flavour Enhancers</b>	No	<b>Artificial Sweeteners</b>	No
<b>Vegan Diet</b>	No	<b>Vegetarian Diet</b>	Suitable for
<b>Halal Diet</b>	No	<b>Kosher Diet</b>	No

## DIET SUITABILITY

NUTRITIONAL INFORMATION

Each 100g/ml portion contains:



of your reference intake.

Typical values per 100g/ml : Energy 419kcal / 1753kJ

Nutrient	per 100g	RI per 100g	per 105g serving	RI per 105g serving
Energy (kJ)	1753 kJ	21%	1840.7 kJ	22%
Energy (kcal)	419 kcal	21%	440 kcal	22%
Fat	20 g	29%	21 g	30%
of which Saturates	4.8 g	24%	5 g	25%
Carbohydrate	56 g	22%	58.8 g	23%
of which Sugars	29 g	32%	30.5 g	34%
Fibre	0.8 g		0.8 g	
Protein	3.7 g	7%	3.9 g	8%
Salt	0.34 g	6%	0.4 g	7%
Serving Size	105 g			

SUPPLEMENTARY NUTRITIONAL INFORMATION

HFSS (HIGH IN FAT, SALT AND SUGAR)  
HANDLING & STORAGE INFORMATION

HFSS Status	No		
Directions For Use	Ready to eat snack. Consume on opening.		
Storage Instructions	Store in cool, dry conditions. Keep out of direct sunlight and away from sources of heat. Not suitable for refrigeration or freezing.		
Shelf Life from Time of Production	119 Days	Exempt From Shelf Life Labelling	No

ACCREDITATIONS/ CERTIFICATIONS/ ASSURANCE SCHEMES



Other Accreditation	IFS Food Version 7, October 2020 - Higher Level		
Product Country of Origin/Place of Provenance	United Kingdom		

ORIGIN

Additional Origin Details	Country of origin - vary. Manufactured in UK		
Standards Testing	Microbiological Standards		
Do you undertake trend analysis of microbiological results?	Yes	Is shelf life testing undertaken?	Yes

PRODUCT CHARACTERISTICS

Organism	Description	Frequency	Target	Maximum	Sample (g or ml)
Total Viable Count (TVC) (cfu/g or ml)		Occasionally	<100	1000	100
Staphylococcus Aureus (cfu/g or ml)		Occasionally	<20	20	100
E. Coli (cfu/g or ml)		Occasionally	<10	10	100
Salmonella (cfu/g or ml)		Occasionally	=0	0	25
Listeria SPP (cfu/g or ml)		Occasionally	=0	0	25
Yeast (cfu/g or ml)		Occasionally	<50	250	100
Moulds (cfu/g or ml)		Occasionally	<50	250	100

Analytical Standards

Test	Description	Frequency	Target	Range	Sample (g or ml)
Moisture (%)		Occasionally	=23	18 to 28	100

CONFIGURATION

Case Configuration

Inner Pack Configuration

**Total Quantity of Inner Components in Outer Case** 16 Units

**Is the Outer Case Splittable?** No

PRODUCT WEIGHTS

Inner Component

**Variable Weight Consumer Item** Yes

Outer Case

**Outer Case Gross Weight** 1.96 kg

**Outer Case Net Weight** 1.68 kg

PRODUCT DIMENSIONS

Inner Component

**Inner Component Depth** 60 mm

**Inner Component Width** 75 mm

**Inner Component Height** 75 mm

Outer Case

**Outer Case Depth** 407 mm

**Outer Case Width** 373 mm

**Outer Case Height** 75 mm

PALLET INFORMATION

**Non Palletised** Yes

PACKAGING

Inner Component Packaging

Type	Materials	Weight	Recycled Plastic %	Recyclable	Returnable	Composite
Film	Plastic	1.5 g	- %			
Film	Paper/Cardboard	0.5 g	- %			

Outer Case Packaging

Type	Materials	Weight	Recycled Plastic %	Recyclable	Returnable	Composite
Case	Plastic	24 g	- %			
Case	Paper/Cardboard	253 g	- %			

Transport Packaging

Type	Materials	Weight	Recycled Plastic %	Recyclable	Returnable	Composite
Other	Plastic	500 g	- %			
Other	Paper/Cardboard	3600 g	- %			
Other	Wood	20000 g	- %			

OTHER  
INFORMATION

<b>Intrastat/Taric Code</b>	1905
<b>Commodity Code</b>	1905907000

**Manufacturer Comments**

Minimum order quantities to be discussed and agreed with Food Connections

Inner Component GTIN	5027870204876
Manufacturer Component Code	Rainbow
Outer Case GTIN	05027870202643



INGREDIENTS

**Ingredient Declaration**

**WHEAT** Flour\*, Sugar, Rapeseed Oil, Water, Humectants: Glycerine & Glucose Syrup (Glucose syrup, Water, Acidity Regulator: Acetic Acid), White Chocolate Flavour Topping (9%) (Sugar, Palm Oil, Whey Powder (**MILK**), **WHEAT** Flour\*, Emulsifier: Lecithin (**SOYA**), Natural Flavouring), Milk Chocolate Beans (9%) (Sugar, Cocoa Butter, Whole **MILK** Powder, Cocoa Mass, Whey Powder (**MILK**), Rice Starch, Thickening Agent (Arabic Gum), Emulsifier (Sunflower Lecithin), Glucose Syrup, Salt, Glazing Agents (Carnauba Wax, Bees Wax & Shellac), Colours (Anthocyanin, Mixed Carotenes, Copper -Chlorophyllin- Complex, Curcumin, Beetroot Red), Whole Dried **EGG**, **WHEAT** Starch, Skimmed **MILK** Powder, Raising Agents: Sodium acid pyrophosphate, Sodium bicarbonate & Potassium bicarbonate, Dextrose Monohydrate, Pregelatinised Maize Starch, Whey Powder (**MILK**), Rice Starch, Preservative: Potassium Sorbate, Emulsifiers: Polyglycerol Esters of Fatty Acids, Mono- & di-Glycerides of Fatty Acids & Sodium Stearoyl-2 Lactylate, Salt, Stabiliser: Xanthan Gum, Natural Flavouring. \* Wheat Flour is with added Calcium, Iron, Niacin & Thiamine.

ALLERGENS

Product Contains:

<b>Celery/Celeriac</b>	No	<b>Mustard</b>	No
<b>Cereals Containing Gluten</b>	Yes	<b>Nuts (Tree)</b>	May Contain
<b>Barley</b>	May Contain	<b>Almond nuts</b>	May Contain
<b>Oats</b>	May Contain	<b>Brazil nuts</b>	May Contain
<b>Rye</b>	May Contain	<b>Cashew nuts</b>	May Contain
<b>Wheat (including Spelt and Khorasan)</b>	Yes	<b>Hazelnuts</b>	May Contain
<b>Crustacea</b>	No	<b>Macadamia (Queensland) nuts</b>	May Contain
<b>Eggs</b>	Yes	<b>Pecan nuts</b>	May Contain
<b>Fish</b>	No	<b>Pistachio nuts</b>	May Contain
<b>Lupin</b>	No	<b>Walnuts</b>	May Contain
<b>Milk</b>	Yes	<b>Peanuts</b>	No
<b>Molluscs</b>	No	<b>Sesame Seeds</b>	No
		<b>Soybeans</b>	Yes
		<b>Sulphur Dioxide and Sulphites</b>	No

Risk Source:

**Additional Allergen Information**

Allergy advice: Allergens, including cereals containing gluten, are shown in the ingredients list in BOLD CAPITALS. May contain traces of other cereals containing gluten and nuts as this product was made in premises where these ingredients are used. WHEAT, MILK, SOYA, EGG

SUPPLEMENTARY INGREDIENT INFORMATION

<b>Palm Oil</b>	Yes
<b>Hydrogenated Vegetable Oil/Fat</b>	No
<b>GM Protein/DNA</b>	No

ADDITIVES

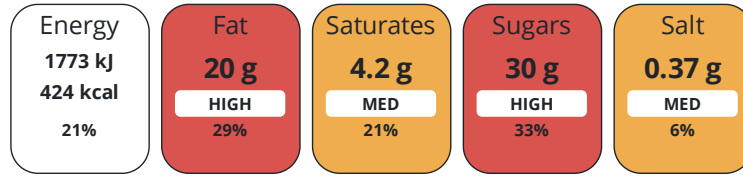
Product Contains:

<b>Artificial Antioxidants</b>	No	<b>Artificial Flavourings</b>	No
<b>Artificial Colours</b>	No	<b>Artificial Preservatives</b>	Yes
<b>Artificial Flavour Enhancers</b>	No	<b>Artificial Sweeteners</b>	No

DIET SUITABILITY

<b>Vegan Diet</b>	No	<b>Vegetarian Diet</b>	No
<b>Halal Diet</b>	No	<b>Kosher Diet</b>	No

Each 100g/ml portion contains:



of your reference intake.

Typical values per 100g/ml : Energy 424kcal / 1773kJ

Nutrient	per 100g	RI per 100g	per 105g serving	RI per 105g serving
Energy (kJ)	1773 kJ	21%	1861.7 kJ	22%
Energy (kcal)	424 kcal	21%	445.2 kcal	22%
Fat	20 g	29%	21 g	30%
of which Saturates	4.2 g	21%	4.4 g	22%
Carbohydrate	56 g	22%	58.8 g	23%
of which Sugars	30 g	33%	31.5 g	35%
Fibre	0.9 g		0.9 g	
Protein	3.9 g	8%	4.1 g	8%
Salt	0.37 g	6%	0.4 g	7%
<b>Serving Size</b>	105 g			

SUPPLEMENTARY  
NUTRITIONAL  
INFORMATION

HFSS (HIGH IN  
FAT, SALT AND  
SUGAR)  
HANDLING &  
STORAGE  
INFORMATION

<b>HFSS Status</b>	No		
<b>Directions For Use</b>	Ready to eat snack. Consume on opening.		
<b>Storage Instructions</b>	Store in cool, dry conditions. Keep out of direct sunlight and away from sources of heat. Not suitable for refrigeration or freezing.		
<b>Shelf Life from Time of Production</b>	119 Days	<b>Exempt From Shelf Life Labelling</b>	No

ACCREDITATIONS/  
CERTIFICATIONS/  
ASSURANCE  
SCHEMES



<b>Other Accreditation</b>	IFS Food Version 7, October 2020 - Higher Level		
<b>Product Country of Origin/Place of</b>	United Kingdom		
<b>Provenance</b>			
<b>Additional Origin Details</b>	Country of origin - vary. Manufactured in UK		
<b>Standards Testing</b>	Standards Testing		
<b>Do you undertake trend analysis of microbiological results?</b>	Yes	<b>Is shelf life testing undertaken?</b>	Yes
<b>Microbiological Standards</b>	Microbiological Standards		

ORIGIN

PRODUCT  
CHARACTERISTICS

Organism	Description	Frequency	Target	Maximum	Sample (g or ml)
Total Viable Count (TVC) (cfu/g or ml)		Occasionally	<100	1000	100
Staphylococcus Aureus (cfu/g or ml)		Occasionally	<20	20	100
E. Coli (cfu/g or ml)		Occasionally	<10	10	100
Salmonella (cfu/g or ml)		Occasionally	=0	0	25
Listeria SPP (cfu/g or ml)		Occasionally	=0	0	25
Yeast (cfu/g or ml)		Occasionally	<50	250	100
Moulds (cfu/g or ml)		Occasionally	<50	250	100

Analytical Standards

Test	Description	Frequency	Target	Range	Sample (g or ml)
Moisture (%)		Occasionally	=23	18 to 28	100

CONFIGURATION

Case Configuration

Inner Pack Configuration

**Total Quantity of Inner Components in Outer Case** 16 Units

**Is the Outer Case Splittable?** No

PRODUCT WEIGHTS

Inner Component

**Variable Weight Consumer Item** Yes

Outer Case

**Outer Case Gross Weight** 1.96 kg

**Outer Case Net Weight** 1.68 kg

PRODUCT DIMENSIONS

Inner Component

**Inner Component Depth** 60 mm

**Inner Component Width** 75 mm

**Inner Component Height** 75 mm

Outer Case

**Outer Case Depth** 407 mm

**Outer Case Width** 373 mm

**Outer Case Height** 75 mm

PALLET INFORMATION

**Non Palletised** Yes

PACKAGING

Inner Component Packaging

Type	Materials	Weight	Recycled Plastic %	Recyclable	Returnable	Composite
Film	Plastic	1.5 g	- %			
Film	Paper/Cardboard	0.5 g	- %			

Outer Case Packaging

Type	Materials	Weight	Recycled Plastic %	Recyclable	Returnable	Composite
Case	Plastic	24 g	- %			
Case	Paper/Cardboard	253 g	- %			

Transport Packaging

Type	Materials	Weight	Recycled Plastic %	Recyclable	Returnable	Composite
Other	Plastic	500 g	- %			
Other	Paper/Cardboard	3600 g	- %			
Other	Wood	20000 g	- %			

OTHER INFORMATION

<b>Intrastat/Taric Code</b>	1905
<b>Commodity Code</b>	1905907000

**Manufacturer Comments**

Minimum order quantities to be discussed and agreed with Food Connections

CONTACT INFORMATION

Address	Technical Contact
Food Connections Ltd	Gillian Currie
Quorn House, Comet Way	Technical Manager
Hermitage Industrial Estate	<a href="mailto:gillian.currie@foodconnections.co.uk">gillian.currie@foodconnections.co.uk</a>
Coalville	
Leicestershire	<u>P: (Phone)</u> 01530 830180
LE67 3FS	
United Kingdom	

P: (Phone) 01530 830180

Complaints Contact

Gillian Currie  
 Technical Manager  
[gillian.currie@foodconnections.co.uk](mailto:gillian.currie@foodconnections.co.uk)

P: (Phone) 01530 830180

The information on the [Erudus System](#) has been supplied by the manufacturers of the products and, whilst the owners of the Erudus System take steps to ensure the information is regularly updated, they give no warranty and no guarantee that the information is accurate. Product information and ingredients may change, please always read product labels carefully in addition to using the information provided by Erudus.

We do not accept liability for any inaccuracies or incorrect information contained on this site.  
 Please visit <http://www.erudus.com/terms-and-conditions> for full terms and conditions.