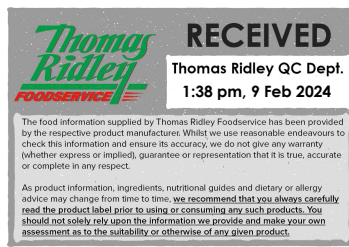


Changed Feb 09, 2024 12:11

Reviewed Feb 09, 2024 12:11

Erudus ID 8fc6efc935fa470b89e581dc7d416e0c

Version 2.0



# HP Brown Sauce 255g

Brown Sauce 12x255g

## PRODUCT DESCRIPTION

Brown sauce

<b>Brand</b>	H.J. Heinz
<b>Manufacturer Product Code</b>	71860602, 76002231
<b>Product Type</b>	Food
<b>Product Category</b>	Condiments
<b>Storage Type</b>	Ambient
<b>Erudus ID</b>	8fc6efc935fa470b89e581dc7d416e0c
<b>Specification Type</b>	Generic



<b>Inner Component GTIN</b>	5000111001007
<b>Outer Case GTIN</b>	05000111592529



## INGREDIENTS

### Ingredient Declaration

Tomatoes, Malt Vinegar (from BARLEY), Molasses, Glucose - Fructose Syrup, Spirit Vinegar, Sugar, Dates, Modified Cornflour, RYE Flour, Salt, Spices, Flavourings, Tamarind,

## ALLERGENS

Product Contains:

<b>Celery/Celериac</b>	No	<b>Mustard</b>	No
<b>Cereals Containing Gluten</b>	Yes	<b>Nuts (Tree)</b>	No
<b>Barley</b>	Yes	<b>Almond nuts</b>	No
<b>Oats</b>	No	<b>Brazil nuts</b>	No
<b>Rye</b>	Yes	<b>Cashew nuts</b>	No
<b>Wheat (including Spelt and Khorasan)</b>	No	<b>Hazelnuts</b>	No
<b>Crustacea</b>	No	<b>Macadamia (Queensland) nuts</b>	No
<b>Eggs</b>	No	<b>Pecan nuts</b>	No
<b>Fish</b>	No	<b>Pistachio nuts</b>	No
<b>Lupin</b>	No	<b>Walnuts</b>	No
<b>Milk</b>	No	<b>Peanuts</b>	No
<b>Molluscs</b>	No	<b>Sesame Seeds</b>	No
<b>Palm Oil</b>	No	<b>Soybeans</b>	No
<b>Hydrogenated Vegetable Oil/Fat</b>	No	<b>Sulphur Dioxide and Sulphites</b>	No
<b>GM Protein/DNA</b>	No	<b>Alcoholic Strength %Vol (ABV)</b>	0 % Vol

## SUPPLEMENTARY INGREDIENT INFORMATION

ADDITIVES

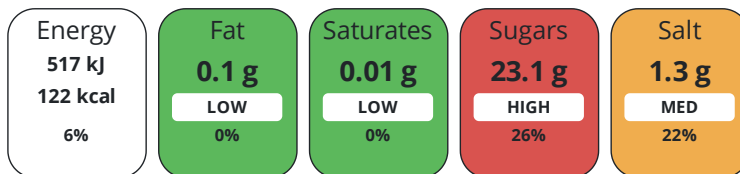
Product Contains:

<b>Artificial Antioxidants</b>	No	<b>Artificial Flavourings</b>	No
<b>Artificial Colours</b>	No	<b>Artificial Preservatives</b>	No
<b>Artificial Flavour Enhancers</b>	No	<b>Artificial Sweeteners</b>	No
<b>Vegan Diet</b>	Suitable for	<b>Vegetarian Diet</b>	Suitable for
<b>Halal Diet</b>	Suitable for	<b>Kosher Diet</b>	Suitable for

DIET  
SUITABILITY

NUTRITIONAL  
INFORMATION

Each 100g/ml portion contains:



of your reference intake.

Typical values per 100g/ml : Energy 122kcal / 517kJ

Nutrient	per 100g	RI per 100g
<b>Energy (kJ)</b>	517 kJ	6%
<b>Energy (kcal)</b>	122 kcal	6%
<b>Fat</b>	0.1 g	0%
<b>of which Saturates</b>	0.01 g	0%
<b>Carbohydrate</b>	28.3 g	11%
<b>of which Sugars</b>	23.1 g	26%
<b>Protein</b>	0.9 g	2%
<b>Salt</b>	1.3 g	22%
<b>Sodium</b>	500 mg	

SUPPLEMENTARY  
NUTRITIONAL  
INFORMATION

HANDLING &  
STORAGE  
INFORMATION

**Directions For Use**

Ready to use condiment

**Storage Instructions**

Refrigerate after opening and use within 8 weeks

<b>Shelf Life from Time of Production</b>	730 Days	<b>Exempt From Shelf Life Labelling</b>	No
---	----------	---	----

ACCREDITATIONS/  
CERTIFICATIONS/  
ASSURANCE  
SCHEMES



**Other Accreditation**

n/a

ORIGIN

**Product Country of Origin/Place of** Other

**Provenance**

**Additional Origin Details**

The Netherlands

PRODUCT  
CHARACTERISTICS

Standards Testing

CONFIGURATION	Case Configuration		Inner Pack Configuration					
	<b>Total Quantity of Inner Components in Outer Case</b>	12 Units						
	<b>Is the Outer Case Splittable?</b>	No						
PRODUCT WEIGHTS	Inner Component							
	<b>Variable Weight Consumer Item</b>	No						
	<b>Inner Component Weight</b>	255 g						
	Outer Case							
	<b>Outer Case Gross Weight</b>	5.88 kg						
	<b>Outer Case Net Weight</b>	3.06 kg						
PRODUCT DIMENSIONS	Inner Component							
	<b>Inner Component Depth</b>	48 mm						
	<b>Inner Component Width</b>	48 mm						
	<b>Inner Component Height</b>	206 mm						
	Outer Case							
	<b>Outer Case Depth</b>	198 mm						
	<b>Outer Case Width</b>	147 mm						
	<b>Outer Case Height</b>	206 mm						
	PALLET INFORMATION	<b>Quantity of Cases Per Pallet Layer</b>	40 Cases	<b>Pallet Height</b>	1.6 MTR			
<b>Quantity of Layers Per Pallet</b>		5 Layers						
<b>Quantity of Cases Per Pallet</b>		200 Cases						
PACKAGING	Inner Component Packaging							
	<b>Type</b>	<b>Materials</b>	<b>Weight</b>	<b>Recycled Plastic %</b>	<b>Recyclable</b>	<b>Returnable</b>	<b>Composite</b>	
	Bottle	Plastic	2.5 g	- %				
	Bottle	Paper/Cardboard	1.4 g	- %				
	Bottle	Glass	223 g	- %				
	Outer Case Packaging							
	<b>Type</b>	<b>Materials</b>	<b>Weight</b>	<b>Recycled Plastic %</b>	<b>Recyclable</b>	<b>Returnable</b>	<b>Composite</b>	
	Case	Plastic	12.7 g	- %				
	Case	Paper/Cardboard	25 g	- %				
	Transport Packaging							
	<b>Type</b>	<b>Materials</b>	<b>Weight</b>	<b>Recycled Plastic %</b>	<b>Recyclable</b>	<b>Returnable</b>	<b>Composite</b>	
	Other	Plastic	486 g	- %				
	Other	Paper/Cardboard	2840 g	- %				
	Other	Wood	28000 g	- %				
	OTHER INFORMATION	<b>Manufacturer Comments</b>						
		n/a						

CONTACT  
INFORMATION

Address

H.J. Heinz  
The Shard  
32 London Bridge Street  
London  
SE1 9SG  
England

P: (Phone) 02037 650500

The information on the [Erudus System](#) has been supplied by the manufacturers of the products and, whilst the owners of the Erudus System take steps to ensure the information is regularly updated, they give no warranty and no guarantee that the information is accurate. Product information and ingredients may change, please always read product labels carefully in addition to using the information provided by Erudus.

We do not accept liability for any inaccuracies or incorrect information contained on this site.  
Please visit <http://www.erudus.com/terms-and-conditions> for full terms and conditions.