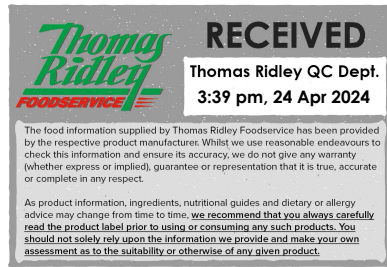


Changed Apr 24, 2024 10:29

Reviewed Apr 24, 2024 10:29

Erudus ID 5fe43e74bf8a4eeda1a5a269c12e8b39

Version 2.0



56195

Kellogg's Rice Krispies Cereal & Milk Bar 25x20g

Rice Krispies Cereal Bar 25x0.5kg

PRODUCT DESCRIPTION

All of the great taste of Kellogg's Rice Krispies Cereal combined with a milky layer to create an easy to eat cereal bar. Rice Krispies Cereal Bars are the perfect way to enjoy our classic toasted rice cereal on-the-go. These bars are the perfect for an on-the-go snack. Enjoy the taste of Kellogg's Rice Krispies Cereal with our Rice Krispies Cereal Bar. *Please always check the label of the pack you receive as there may be differences from the information you read on site due to stock changeover

Brand	Kellanova (previously Kellogg's)
Manufacturer Product Code	7143973000
Product Type	Food
Product Category	Cereal Bars
Storage Type	Ambient
Erudus ID	5fe43e74bf8a4eeda1a5a269c12e8b39
Specification Type	Cereals



Inner Component GTIN 5050083090318

Outer Case GTIN 5050083439735



INGREDIENTS

Ingredient Declaration

Kellogg's toasted rice cereal (28%) (rice, sugar, salt, BARLEY malt extract, niacin, iron, vitamin B6, riboflavin, thiamin, folic acid, vitamin D, vitamin B12), sweetened condensed skimmed MILK (13%) (skimmed MILK, sugar), vegetable oils (palm, coconut) in varying proportions, glucose syrup, starch, invert sugar syrup, skimmed MILK powder (5.5%), sugar, fructose, oligofructose, humectants (glycerol, sorbitol), calcium carbonate, MILK whey powder, emulsifier (SOY lecithin), acidity regulator (diphosphates), antioxidants (ascorbyl palmitate, alpha tocopherol), vanilla extract, natural flavouring, vitamin D.

ALLERGENS

Product Contains:

Celery/Celeriac	No	Mustard	No
Cereals Containing Gluten	Yes	Nuts (Tree)	No
Barley	Yes	Almond nuts	No
Oats	No	Brazil nuts	No
Rye	No	Cashew nuts	No
Wheat (including Spelt and Khorasan)	No	Hazelnuts	No
Crustacea	No	Macadamia (Queensland) nuts	No
Eggs	No	Pecan nuts	No
Fish	No	Pistachio nuts	No
Lupin	No	Walnuts	No
Milk	Yes	Peanuts	No
Molluscs	No	Sesame Seeds	No
		Soybeans	Yes
		Sulphur Dioxide and Sulphites	No

SUPPLEMENTARY INGREDIENT INFORMATION ADDITIVES

GM Protein/DNA	No
-----------------------	----

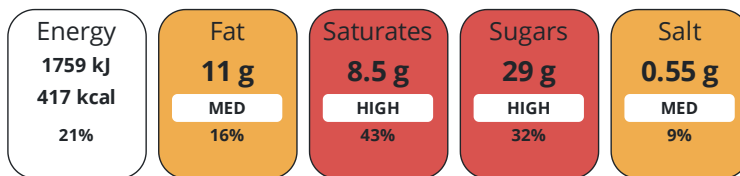
Product Contains:

DIET SUITABILITY

Vegan Diet	No	Vegetarian Diet	Suitable for
Halal Diet	No	Kosher Diet	No

NUTRITIONAL INFORMATION

Each 100g/ml portion contains:



of your reference intake.

Typical values per 100g/ml : Energy 417kcal / 1759kJ

Nutrient	per 100g	RI per 100g
Energy (kJ)	1759 kJ	21%
Energy (kcal)	417 kcal	21%
Fat	11 g	16%
of which Saturates	8.5 g	43%
Carbohydrate	73 g	28%
of which Sugars	29 g	32%
Fibre	3 g	
Protein	5.1 g	10%
Salt	0.55 g	9%

SUPPLEMENTARY NUTRITIONAL INFORMATION

HFSS (HIGH IN FAT, SALT AND SUGAR)

HFSS Status	Yes
--------------------	-----

HANDLING &
STORAGE
INFORMATION

Directions For Use

Eat as directed

Storage Instructions

Store in a cool dry place.

Shelf Life from Time of Production

365 Days

Exempt From Shelf Life Labelling

No

ORIGIN

Product Country of Origin/Place of

European Union

Provenance

PRODUCT
CHARACTERISTICS
CONFIGURATION

Standards Testing

Case Configuration

Inner Pack Configuration

Total Quantity of Inner Components in

25 Units

Outer Case

Is the Outer Case Splittable?

No

PRODUCT
WEIGHTS

Inner Component

Variable Weight Consumer Item

No

Inner Component Weight

0.5 kg

Outer Case

Outer Case Gross Weight

0.63 kg

Outer Case Net Weight

0.5 kg

PRODUCT
DIMENSIONS

Inner Component

Inner Component Depth

22 mm

Inner Component Width

120 mm

Inner Component Height

30 mm

Outer Case

Outer Case Depth

238 mm

Outer Case Width

132 mm

Outer Case Height

132 mm

PALLET
INFORMATION

Quantity of Cases Per Pallet Layer

36 Cases

Pallet Height

2.68 MTR

Quantity of Layers Per Pallet

18 Layers

Quantity of Cases Per Pallet

648 Cases

PACKAGING

Inner Component Packaging

Type	Materials	Weight	Recycled Plastic %	Recyclable	Returnable	Composite
Foil	Plastic	0.76 g	- %			

Outer Case Packaging

Type	Materials	Weight	Recycled Plastic %	Recyclable	Returnable	Composite
Box	Paper/Cardboard	114 g	- %	Yes		

OTHER
INFORMATION

CONTACT
INFORMATION

Address

Kellanova (previously Kellogg's)
Kellogg
Orange Tower
Salford
Greater Manchester
M50 2HF
England

P. (Phone) 07716254258

Commercial Contact

Chris Duffy
National Account Executive
Chris.Duffy@kellogg.com

The information on the [Erudus System](#) has been supplied by the manufacturers of the products and, whilst the owners of the Erudus System take steps to ensure the information is regularly updated, they give no warranty and no guarantee that the information is accurate. Product information and ingredients may change, please always read product labels carefully in addition to using the information provided by Erudus.

We do not accept liability for any inaccuracies or incorrect information contained on this site.
Please visit <http://www.erudus.com/terms-and-conditions> for full terms and conditions.