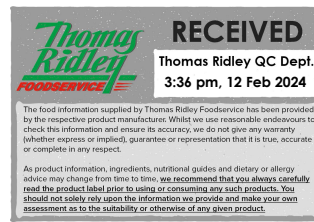


Changed Feb 12, 2024 14:58

Reviewed Feb 12, 2024 14:58

Erudus ID 90a9b2698dd54a9bbad276c50d083105

Version 2.0



# Schwartz Bacon Flavoured Bits (6 x 320g)

Bacon Flavoured Bits 6x320g

## PRODUCT DESCRIPTION

Brown/red flakes with bacon/smoky/meaty taste

|                           |                                  |
|---------------------------|----------------------------------|
| Brand                     | R.H.Amar & Co Limited            |
| Manufacturer Product Code | MC133                            |
| Product Type              | Food                             |
| Product Category          | Chillies, Herbs, & Spices        |
| Storage Type              | Ambient                          |
| Erudus ID                 | 90a9b2698dd54a9bbad276c50d083105 |
| Specification Type        | Generic                          |



|                      |                |
|----------------------|----------------|
| Inner Component GTIN | 5010421074448  |
| Outer Case GTIN      | 05010421174445 |



## INGREDIENTS

### Ingredient Declaration

SOYBEAN protein, sunflower oil, salt, dried beetroot, flavourings (including smoke flavouring), maltodextrin, WHEAT flour, colours (carmine, paprika extract), anti-caking agent (magnesium carbonate).

## ALLERGENS

Product Contains:

|   |     |                                      |     |
|---|-----|--------------------------------------|-----|
| <b>Celery/Celeriac</b>                      | No  | <b>Mustard</b>                       | No  |
| <b>Cereals Containing Gluten</b>            | Yes | <b>Nuts (Tree)</b>                   | No  |
| <b>Barley</b>                               | No  | <b>Almond nuts</b>                   | No  |
| <b>Oats</b>                                 | No  | <b>Brazil nuts</b>                   | No  |
| <b>Rye</b>                                  | No  | <b>Cashew nuts</b>                   | No  |
| <b>Wheat (including Spelt and Khorasan)</b> | Yes | <b>Hazelnuts</b>                     | No  |
| <b>Crustacea</b>                            | No  | <b>Macadamia (Queensland) nuts</b>   | No  |
| <b>Eggs</b>                                 | No  | <b>Pecan nuts</b>                    | No  |
| <b>Fish</b>                                 | No  | <b>Pistachio nuts</b>                | No  |
| <b>Lupin</b>                                | No  | <b>Walnuts</b>                       | No  |
| <b>Milk</b>                                 | No  | <b>Peanuts</b>                       | No  |
| <b>Molluscs</b>                             | No  | <b>Sesame Seeds</b>                  | No  |
|   |     | <b>Soybeans</b>                      | Yes |
|   |     | <b>Sulphur Dioxide and Sulphites</b> | No  |

## SUPPLEMENTARY INGREDIENT INFORMATION

|                                       |    |
|---------------------------------------|----|
| <b>Palm Oil</b>                       | No |
| <b>Hydrogenated Vegetable Oil/Fat</b> | No |
| <b>GM Protein/DNA</b>                 | No |

ADDITIVES

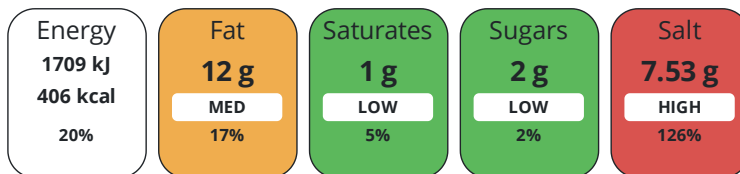
Product Contains:

|                                     |    |                                 |     |
|-------------------------------------|----|---------------------------------|-----|
| <b>Artificial Antioxidants</b>      | No | <b>Artificial Flavourings</b>   | Yes |
| <b>Artificial Colours</b>           | No | <b>Artificial Preservatives</b> | No  |
| <b>Artificial Flavour Enhancers</b> | No | <b>Artificial Sweeteners</b>    | No  |
| <b>Vegan Diet</b>                   | No | <b>Vegetarian Diet</b>          | No  |
| <b>Halal Diet</b>                   | No | <b>Kosher Diet</b>              | No  |

DIET  
SUITABILITY

NUTRITIONAL  
INFORMATION

Each 100g/ml portion contains:



of your reference intake.

Typical values per 100g/ml : Energy 406kcal / 1709kj

| Nutrient                  | per 100g | RI per 100g |
|---------------------------|----------|-------------|
| <b>Energy (kJ)</b>        | 1709 kJ  | 20%         |
| <b>Energy (kcal)</b>      | 406 kcal | 20%         |
| <b>Fat</b>                | 12 g     | 17%         |
| <b>of which Saturates</b> | 1 g      | 5%          |
| <b>Carbohydrate</b>       | 18 g     | 7%          |
| <b>of which Sugars</b>    | 2 g      | 2%          |
| <b>Protein</b>            | 55 g     | 110%        |
| <b>Salt</b>               | 7.53 g   | 126%        |

SUPPLEMENTARY  
NUTRITIONAL  
INFORMATION

HANDLING &  
STORAGE  
INFORMATION

**Directions For Use**

Ready to eat

**Storage Instructions**

Ambient storage, out of direct sunlight

|   |          |   |    |
|---|----------|---|----|
| <b>Shelf Life from Time of Production</b> | 547 Days | <b>Exempt From Shelf Life Labelling</b> | No |
|---|----------|---|----|

ACCREDITATIONS/  
CERTIFICATIONS/  
ASSURANCE  
SCHEMES



ORIGIN

**Product Country of Origin/Place of** France

**Provenance**

PRODUCT  
CHARACTERISTICS

Standards Testing

|  |    |  |    |
|--|----|--|----|
| <b>Do you undertake trend analysis of microbiological results?</b> | No | <b>Is shelf life testing undertaken?</b> | No |
|--|----|--|----|

Analytical Standards

| Test         | Description | Frequency   | Target | Range  | Sample (g or ml) |
|--------------|-------------|-------------|--------|--------|------------------|
| Moisture (%) |             | Every Batch | <7     | 0 to 7 | 100              |

|                     | Test  | Description      | Frequency                  | Target                    | Range             | Sample (g or ml)  |                  |
|---------------------|---|------------------|----------------------------|---------------------------|-------------------|-------------------|------------------|
|                     | Salt Content (%)  |                  | Every Batch                | =7.5                      | 6 to 9            | 100               |                  |
| CONFIGURATION       | Case Configuration                                      |                  | Inner Pack Configuration   |                           |                   |                   |                  |
|                     | <b>Total Quantity of Inner Components in Outer Case</b> | 6 Units          |                            |                           |                   |                   |                  |
|                     | <b>Is the Outer Case Splittable?</b>                    | Yes              |                            |                           |                   |                   |                  |
| PRODUCT WEIGHTS     | Inner Component   |                  |                            |                           |                   |                   |                  |
|                     | <b>Variable Weight Consumer Item</b>                    | No               |                            |                           |                   |                   |                  |
|                     | <b>Inner Component Weight</b>                           | 320 g            |                            |                           |                   |                   |                  |
|                     | Outer Case  |                  |                            |                           |                   |                   |                  |
|                     | <b>Outer Case Gross Weight</b>                          | 2.29 kg          |                            |                           |                   |                   |                  |
|                     | <b>Outer Case Net Weight</b>                            | 1.92 kg          |                            |                           |                   |                   |                  |
| PRODUCT DIMENSIONS  | Inner Component   |                  |                            |                           |                   |                   |                  |
|                     | <b>Inner Component Depth</b>                            | 90 mm            |                            |                           |                   |                   |                  |
|                     | <b>Inner Component Width</b>                            | 80 mm            |                            |                           |                   |                   |                  |
|                     | <b>Inner Component Height</b>                           | 170 mm           |                            |                           |                   |                   |                  |
|                     | Outer Case  |                  |                            |                           |                   |                   |                  |
|                     | <b>Outer Case Depth</b>                                 | 280 mm           |                            |                           |                   |                   |                  |
|                     | <b>Outer Case Width</b>                                 | 190 mm           |                            |                           |                   |                   |                  |
|                     | <b>Outer Case Height</b>                                | 170 mm           |                            |                           |                   |                   |                  |
| PALLET INFORMATION  | <b>Quantity of Cases Per Pallet Layer</b>               | 17 Cases         | <b>Pallet Height</b>       | 1.02 MTR                  |                   |                   |                  |
|                     | <b>Quantity of Layers Per Pallet</b>                    | 6 Layers         | <b>Pallet Gross Weight</b> | 234 kg                    |                   |                   |                  |
|                     | <b>Quantity of Cases Per Pallet</b>                     | 102 Cases        |                            |                           |                   |                   |                  |
| PACKAGING           | Inner Component Packaging                               |                  |                            |                           |                   |                   |                  |
|                     | <b>Type</b>   | <b>Materials</b> | <b>Weight</b>              | <b>Recycled Plastic %</b> | <b>Recyclable</b> | <b>Returnable</b> | <b>Composite</b> |
|                     | Tub   | Plastic          | 60 g                       | - %                       |                   |                   |                  |
|                     | Label   | Paper/Cardboard  | 2 g                        | - %                       |                   |                   |                  |
|                     | Outer Case Packaging                                    |                  |                            |                           |                   |                   |                  |
|                     | <b>Type</b>   | <b>Materials</b> | <b>Weight</b>              | <b>Recycled Plastic %</b> | <b>Recyclable</b> | <b>Returnable</b> | <b>Composite</b> |
|                     | Shrink Wrap   | Plastic          | 10 g                       | - %                       |                   |                   |                  |
| OTHER INFORMATION   | <b>Intrastat/Taric Code</b>                             | 1905905500       |                            |                           |                   |                   |                  |
| CONTACT INFORMATION | Address   |                  |                            |                           |                   |                   |                  |
|                     | R.H.Amar & Co Limited                                   |                  |                            |                           |                   |                   |                  |
|                     | Turnpike Way  |                  |                            |                           |                   |                   |                  |
|                     | High Wycombe  |                  |                            |                           |                   |                   |                  |
|                     | Bucks   |                  |                            |                           |                   |                   |                  |
|                     | HP12 3TF  |                  |                            |                           |                   |                   |                  |
|                     | England   |                  |                            |                           |                   |                   |                  |
|                     | P: (Phone) +44 (0) 1494 530 200                         |                  |                            |                           |                   |                   |                  |

The information on the [Erudus System](#) has been supplied by the manufacturers of the products and, whilst the owners of the Erudus System take steps to ensure the information is regularly updated, they give no warranty and no guarantee that the information is accurate. Product information and ingredients may change, please always read product labels carefully in addition to using the information provided by Erudus.

We do not accept liability for any inaccuracies or incorrect information contained on this site.  
Please visit <http://www.erudus.com/terms-and-conditions> for full terms and conditions.