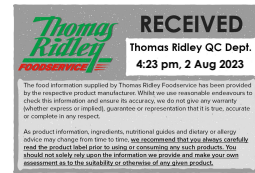


Supplier's Product Code : 07574
 Product Added : 24 November 2014
 Last Updated by Supplier : 17 November 2022
 erudus id : 7e93735467724e74b5c43a40970251c2



The information on the Erudus System has been supplied by the manufacturers of the products and, whilst the owners of the Erudus System take steps to ensure the information is regularly updated, they give no warranty and no guarantee that the information is accurate. Product information and ingredients may change, please always read product labels carefully in addition to using the information provided by Erudus One.

We do not accept liability for any inaccuracies or incorrect information contained on this site. Please visit <http://www.erudus.com/terms-and-conditions> for full terms and conditions.

Weetabix Cereal Single Portion 96 x 1 Pack C

Short Product Name:
Weetabix Cereal

Product Description:
Whole wheat cereal with added vitamins and iron. 96 one biscuit portions

General Information

Food/Drink :	Food
Product Category :	Ambient
Generic Product Type :	Cereals

Supplier's Product Code :
07574
Supplier: Weetabix Ltd
 Station Road
 Burton Latimer
 NN15 5JR
 England
 P: 01536 722181

OUTER PRODUCT

Outer case Information

Outer Case GTIN :	5010029212440	Outer Case Length :	346 mm
Packaging Type Description :	Catch Weight	Outer Case Width :	271 mm
Total Quantity of Inner Units in Outer Case :	96 Units	Outer Case Height :	177 mm
Is Trade Item Splittable? :	Yes	Product Gross Weight :	2.02 kg
		Product Net Weight :	1.80 kg

Pallet Information

Quantity of Cases Per Pallet Layer :	11 Cases	Pallet Height :	1.05 MTR
Quantity of Layers Per Pallet :	5 Layers	Pallet Gross Weight :	145.20 kg
Quantity of Cases Per Pallet :	55 Cases		

Logistical Information

Shelf Life from Time of Production :	365 Days	Minimum Order Quantity :	70 Cases
Guaranteed Shelf Life on Delivery :	274 Days	Delivery Lead Time :	7 Days

Waste Packaging Weight - Outer Case

Glass :	0.00 g	Aluminium :	0.00 g
Plastic :	0.00 g	Steel :	0.00 g
Percentage Recycled Plastic :	Not specified.	Other :	0.00 g
Paper/Board :	130.00 g		

Waste Packaging Weight - Transport Packaging

Plastic :	Not specified.	Wood Total :	Not specified.
Paper/Board :	Not specified.	Is Pallet Returnable? :	-
Percentage Recycled Plastic :	Not specified.		

Other Information

Supplier Comments:
 Whole wheat cereal with added vitamins and iron.
 96 one biscuit portions

INNER PRODUCT

Origin Information

Product Country of Origin/Place of Provenance :	United Kingdom
---	----------------

Additional Origin Details :
N/A

Inner Pack Information

Internal GTIN :	Not specified.
-----------------	----------------

Packaging Type Description :	Polypropylene Film
------------------------------	--------------------

Variable Weight Consumer Item :	No
---------------------------------	----

Net Drained Weight :	Not specified.
----------------------	----------------

Inner Unit Length :	50 mm
---------------------	-------

Inner Unit Height :	20 mm
---------------------	-------

Inner Unit Width :	140 mm
--------------------	--------

Inner Product Weight :	Not specified.
------------------------	----------------

Inner Product Weight Units :	g
------------------------------	---

Weight/Volume :
N/A

Handling Information

Directions For Use :
N/A

Storage Instructions :
Store in a cool, dry and odour free place.

Dietary Information

Ingredients :

WHEAT (95%), Malted **BARLEY** Extract, Sugar, Salt, Niacin, Iron, Riboflavin (B2), Thiamin (B1), Folic Acid.

Product contains:

GM Protein/DNA :	No
Celery/Celeriac (and products thereof) :	No
Lupin (and products thereof) :	No
Eggs (and products thereof) :	No
Fish (and products thereof) :	No
Soybeans (and products thereof) :	No
Milk (and products thereof) :	No
Mustard (and products thereof) :	No
Peanuts (and products thereof) :	No
Sesame Seeds (and products thereof) :	No
Crustacea (and products thereof) :	No
Molluscs (and products thereof) :	No
Nuts (and products thereof) :	No
Almond nuts :	No
Hazelnuts :	No
Walnuts :	No
Cashew nuts :	No
Pecan nuts :	No
Brazil nuts :	No
Pistachio nuts :	No
Macadamia nuts :	No
Queensland nuts :	No
Cereals Containing Gluten :	Yes
Wheat (and products thereof) :	Yes
Rye (and products thereof) :	No
Barley (and products thereof) :	Yes
Oats (and products thereof) :	No
Spelt (and products thereof) :	No
Kamut (and products thereof) :	No
Gluten content <20ppm :	No
Hydrogenated Vegetable Oil/Fat :	No
Palm Oil :	No
Sulphur Dioxide and Sulphites :	Below 10mg per kg/litre (not 0 mg)
Sulphur Dioxide/Sulphites Concentration :	<= 0.2 mg/kg

Product contains :

Artificial Antioxidants :	No
Artificial Colours :	No
Artificial Flavourings :	No
Artificial Flavour Enhancers :	No
Artificial Preservatives :	No
Artificial Sweeteners :	No

Product suitability:

Suitable for a Vegetarian Diet :	Yes
Suitable for a Vegan Diet :	Yes
Suitable for Sufferers of Lactose Intolerance :	Yes
Suitable for Coeliacs :	No
Approved for a Halal Diet :	No
Approved for a Kosher Diet :	Yes
HFSS (High in Fat, Salt and Sugar) :	No

Allergen Statement :

Allergy Advice. For allergens, including cereals containing gluten, see ingredients in bold.

Nutritional Information

Average Serving :	18.75 g or ml
Count per 100g :	Not specified.
Count Per Pack :	Not specified.
Energy per 100 G/ML :	1,531.00 kJ
Energy per 100 G/ML :	362.00 kcal
Fat per 100 G/ML :	2 g
- of which Saturates per 100 G/ML :	0.6 g
- of which Mono-unsaturates per 100 G/ML :	Not specified.
- of which Polyunsaturates per 100 G/ML :	Not specified.
Trans Fats per 100 G\ML :	Not specified.
Carbohydrate Per 100 G/ML :	69 g
- of which Sugars per 100 G/ML :	4.2 g
- of which Polyols per 100 G/ML :	Not specified.
- of which Starch per 100 G/ML :	Not specified.
Fibre per 100 G/ML :	10 g
Protein per 100 G/ML :	12 g
Salt per 100 G/ML :	0.28 g
Sodium per 100 G\ML :	0.11 g

Waste Packaging Weight - Inner Unit

Glass :	0.00 g
Plastic :	0.64 g
Percentage Recycled Plastic :	Not specified.
Paper/Board :	0.00 g

Accreditations / Certifications / Assurance Schemes

BRCGS Certified Production :	Yes
Red Tractor :	No
Fairtrade :	No
Marine Stewardship Council Certified (MSC) :	No
Organic :	No
SALSA (Safe & Local Supplier Approval) :	No
British Lion Mark :	No
RSPCA Assured :	No
LEAF Marque (Linking Environment and Farming) :	No
Rainforest Alliance :	No
Food for Life Supplier Scheme :	No
Quality Meat Scotland :	No
Farm Assured Welsh Livestock :	No
Northern Ireland Beef & Lamb Farm Quality Assurance Scheme :	No
Quality Standard Mark (Beef/Lamb) :	No
Roundtable of Sustainable Palm Oil (RSPO) :	No
School Approved (The Requirement for School Food Regulation 2014) :	No
IFS Food Standard :	No
Best Aquaculture Practices (BAP) Certification :	No
ISO 14001 (Environmental System) :	No
FSSC 22000 :	No

Vitamin A per 100g :	Not specified.
Vitamin C per 100g :	Not specified.
Folate/Folic Acid per 100g :	170.00 µg
Calcium per 100g :	Not specified.
Iron per 100g :	12.00 mg
Zinc per 100g :	Not specified.
Cholesterol per 100 G/ML (UK/FR) :	0.00 g
Non Milk Extrinsic Sugars per 100gm :	Not specified.
Alcoholic Strength %Vol :	Not specified.
Fat Percentage in Dry Matter per 100g :	Not specified.

Aluminium :	0.00 g
Steel :	0.00 g
Other :	0.00 g

Other Accreditation : N/A	
Intra Stat/Taric Code :	Not specified.
Commodity Code :	Not specified.
Identification/Health Marks :	Not specified.

Standards Testing

Do you undertake trend analysis of
microbiological results?: Yes

Is shelf life testing undertaken?: Yes

Microbiological Standards

Not available.

Analytical Standards

Not available.