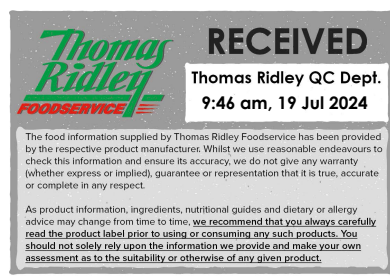


Changed Jul 18, 2024 12:05

Reviewed Jul 18, 2024 12:05

Erudus ID 5d0d595b0ca74ad7b7fb6ed5267fe150

Version 2.0



Twinnings Lemon & Ginger Enveloped Tea Bags 1x12x20

Lemon & Ginger Enveloped Tea Bags 12x

PRODUCT DESCRIPTION

A lemon and ginger flavoured herbal infusion

Brand	R. Twinings & Co Ltd
Manufacturer Product Code	F14380
Product Type	Drink
Product Category	Tea & Coffee
Storage Type	Ambient
Erudus ID	5d0d595b0ca74ad7b7fb6ed5267fe150
Specification Type	Drinks
Inner Component GTIN	0070177079215
Outer Case GTIN	0070177824822



INGREDIENTS

Ingredient Declaration

Ginger Root* (37%), Natural Lemon Flavouring with other Natural Flavourings (25%), Lemongrass, Blackberry Leaves, Lemon Peel, Sweet Fennel, Natural Ginger Flavouring with other Natural Flavourings (3.5%)

ALLERGENS

Product Contains:

Celery/Celeriac	No	Mustard	No
Cereals Containing Gluten	No	Nuts (Tree)	No
Barley	No	Almond nuts	No
Oats	No	Brazil nuts	No
Rye	No	Cashew nuts	No
Wheat (including Spelt and Khorasan)	No	Hazelnuts	No
Crustacea	No	Macadamia (Queensland) nuts	No
Eggs	No	Pecan nuts	No
Fish	No	Pistachio nuts	No
Lupin	No	Walnuts	No
Milk	No	Peanuts	No
Molluscs	No	Sesame Seeds	No
		Soybeans	No
		Sulphur Dioxide and Sulphites	No

SUPPLEMENTARY INGREDIENT INFORMATION

Palm Oil	No
Hydrogenated Vegetable Oil/Fat	No
GM Protein/DNA	No

ADDITIVES

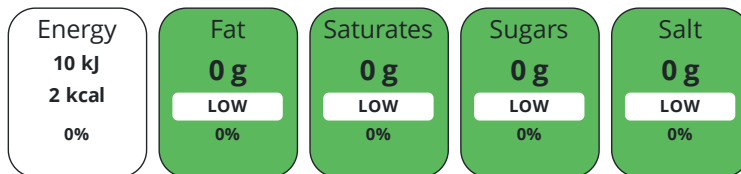
Product Contains:

Artificial Antioxidants	No	Artificial Flavourings	No
Artificial Colours	No	Artificial Preservatives	No
Artificial Flavour Enhancers	No	Artificial Sweeteners	No
Vegan Diet	Suitable for	Vegetarian Diet	Suitable for
Halal Diet	No	Kosher Diet	No

DIET SUITABILITY

NUTRITIONAL INFORMATION

Each 100g/ml portion contains:



of your reference intake.

Typical values per 100g/ml : Energy 2kcal / 10kj

Nutrient	per 100ml	RI per 100ml	per 200ml serving	RI per 200ml serving
Energy (kJ)	10 kJ	0%	20 kJ	0%
Energy (kcal)	2 kcal	0%	4 kcal	0%
Fat	0 g	0%	-	-
of which Saturates	0 g	0%	-	-
Carbohydrate	0 g	0%	-	-
of which Sugars	0 g	0%	-	-
Fibre	0 g	-	-	-
Protein	0 g	0%	-	-
Salt	0 g	0%	-	-
Serving Size	200 ml			

SUPPLEMENTARY NUTRITIONAL INFORMATION

HANDLING & STORAGE INFORMATION

Directions For Use

Brew Time... 2 - 3 mins Using one bag per person, pour on boiling water and infuse for two to three minutes. Leave for a little longer if you prefer a stronger taste. Always best enjoyed without milk.

Storage Instructions

Ambient

Shelf Life from Time of Production 730 Days

BRCGS Certified

Other Accreditation

ACCREDITATIONS/ CERTIFICATIONS/ ASSURANCE SCHEMES ORIGIN

Product Country of Origin/Place of Poland

Provenance

Additional Origin Details

Poland

PRODUCT CHARACTERISTICS

Standards Testing

CONFIGURATION	Case Configuration	Inner Pack Configuration					
	Total Quantity of Inner Components in Outer Case	12 Units					
	Is the Outer Case Splittable?	Yes					
PRODUCT WEIGHTS	Inner Component						
	Outer Case						
	Outer Case Gross Weight	0.9 kg					
	Outer Case Net Weight	0.36 kg					
PRODUCT DIMENSIONS	Inner Component						
	Inner Component Depth	69 mm					
	Inner Component Width	79 mm					
	Inner Component Height	130 mm					
	Outer Case						
	Outer Case Depth	422 mm					
	Outer Case Width	162 mm					
	Outer Case Height	132 mm					
PALLET INFORMATION	Quantity of Cases Per Pallet Layer	16 Cases	Pallet Height	1.3 MTR			
	Quantity of Layers Per Pallet	9 Layers	Pallet Gross Weight	157.6 kg			
	Quantity of Cases Per Pallet	144 Cases					
PACKAGING	Inner Component Packaging						
	Type	Materials	Weight	Recycled Plastic %	Recyclable	Returnable	Composite
	Box	Plastic	2.5 g	- %			
	Box	Paper/Cardboard	40 g	- %			
	Outer Case Packaging						
	Type	Materials	Weight	Recycled Plastic %	Recyclable	Returnable	Composite
	Case	Plastic	8 g	- %			
	Case	Paper/Cardboard	30 g	- %			
	Transport Packaging						
	Type	Materials	Weight	Recycled Plastic %	Recyclable	Returnable	Composite
	Other	Plastic	350 g	- %			
	OTHER INFORMATION	Intrastat/Taric Code	21069092				
		Manufacturer Comments	Naturally caffeine free with all natural ingredients Release the tingle of spicy ginger & zesty lemons				
	CONTACT INFORMATION	Address	Technical Contact				
		R. Twinings & Co Ltd	Neil Parry				
Andover		Customer Supply Team					
SP10 5AQ		Neil.parry@twinings.com					
England	P: (Phone) 01264 348181						
	P: (Phone) 01264 348181						

The information on the [Erudus System](#) has been supplied by the manufacturers of the products and, whilst the owners of the Erudus System take steps to ensure the information is regularly updated, they give no warranty and no guarantee that the information is accurate. Product information and ingredients may change, please always read product labels carefully in addition to using the information provided by Erudus.

We do not accept liability for any inaccuracies or incorrect information contained on this site.
Please visit <http://www.erudus.com/terms-and-conditions> for full terms and conditions.