

Changed Apr 12, 2024 13:38

Reviewed Apr 12, 2024 13:38

Erudus ID 1187c0415e8b424f80f4ca8d195c5362

Version 2.0

59171

Pringles Salt & Vinegar Crisps, 12x40g

Pringles Salt & Vinegar Crisps 12x40g

PRODUCT DESCRIPTION

Pringles Salt & Vinegar Crisps are the perfect combination of bold and savoury flavours certain to satisfy even the most intense of cravings. Intense vinegar flavour combines with bursts of salt and a subtle malt vinegar background, creating a tasty crisp that's satisfying from the first bite to the very last. These delectable crisps are perfect for any party or get together. No matter when or where you enjoy Pringles Salt & Vinegar Crisps they will always stay fresh with our iconic resealable container. Pop, Play, Eat with Pringles Salt & Vinegar Crisps

Brand	Kellanova (previously Kellogg's)
Manufacturer Product Code	7000273000
Product Type	Food
Product Category	Crisps & Snacks
Storage Type	Ambient
Erudus ID	1187c0415e8b424f80f4ca8d195c5362
Specification Type	Generic



Inner Component GTIN	5053990107353
Outer Case GTIN	5053990107490



INGREDIENTS

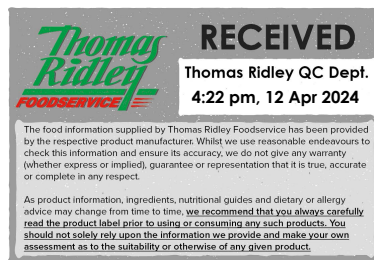
Ingredient Declaration

Dehydrated potatoes, sunflower oil, WHEAT flour, corn flour, rice flour, salt and vinegar seasoning (flavourings BARLEY, potato starch, lactose {MILK}, maltodextrin, flavour enhancers {monosodium glutamate, disodium guanylate, disodium inosinate}, salt, acids {citric acid, malic acid}, sunflower oil), maltodextrin, emulsifier (E471), salt, colour (annatto norbixin).

ALLERGENS

Product Contains:

Celery/Celериac	No	Mustard	No
Cereals Containing Gluten	Yes	Nuts (Tree)	No
Barley	Yes	Almond nuts	No
Oats	No	Brazil nuts	No
Rye	No	Cashew nuts	No
Wheat (including Spelt and Khorasan)	Yes	Hazelnuts	No
Crustacea	No	Macadamia (Queensland) nuts	No
Eggs	No	Pecan nuts	No
Fish	No	Pistachio nuts	No
Lupin	No	Walnuts	No
Milk	Yes	Peanuts	No
Molluscs	No	Sesame Seeds	No
		Soybeans	May Contain
		Sulphur Dioxide and Sulphites	No



Risk Source:

Additional Allergen Information

Contains: BARLEY, MILK, WHEAT May Contain: SOY

SUPPLEMENTARY
INGREDIENT
INFORMATION
ADDITIVES

GM Protein/DNA No

Product Contains:

Artificial Flavour Enhancers Yes

DIET
SUITABILITY

Vegan Diet No

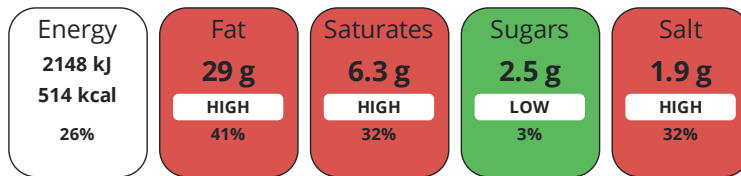
Vegetarian Diet Suitable for

Halal Diet No

Kosher Diet No

NUTRITIONAL
INFORMATION

Each 100g/ml portion contains:



of your reference intake.

Typical values per 100g/ml : Energy 514kcal / 2148kJ

Nutrient	per 100g	RI per 100g	per 40g serving	RI per 40g serving
Energy (kJ)	2148 kJ	26%	859.2 kJ	10%
Energy (kcal)	514 kcal	26%	205.6 kcal	10%
Fat	29 g	41%	11.6 g	17%
of which Saturates	6.3 g	32%	2.5 g	13%
Carbohydrate	56 g	22%	22.4 g	9%
of which Sugars	2.5 g	3%	1 g	1%
Fibre	3.3 g		1.3 g	
Protein	5.7 g	11%	2.3 g	5%
Salt	1.9 g	32%	0.8 g	13%

Serving Size 40 g

SUPPLEMENTARY
NUTRITIONAL
INFORMATION

HFSS Status Yes

HFSS (HIGH IN
FAT, SALT AND
SUGAR)

Directions For Use

Eat as directed

HANDLING &
STORAGE
INFORMATION

Storage Instructions

Store in a cool, dry place

Shelf Life from Time of Production 456 Days

Exempt From Shelf Life Labelling No

ORIGIN

Product Country of Origin/Place of European Union

Provenance

Additional Origin Details

Poland

PRODUCT
CHARACTERISTICS

Standards Testing

	Do you undertake trend analysis of microbiological results?	No	Is shelf life testing undertaken?	No			
CONFIGURATION	Case Configuration		Inner Pack Configuration				
	Total Quantity of Inner Components in Outer Case	12 Units					
	Is the Outer Case Splittable?	No					
PRODUCT WEIGHTS	Inner Component						
	Variable Weight Consumer Item	No					
	Inner Component Weight	40 g					
	Outer Case						
	Outer Case Gross Weight	0.83 kg					
	Outer Case Net Weight	0.48 kg					
PRODUCT DIMENSIONS	Inner Component						
	Inner Component Depth	79 mm					
	Inner Component Width	79 mm					
	Inner Component Height	87 mm					
	Outer Case						
	Outer Case Depth	325 mm					
	Outer Case Width	240 mm					
	Outer Case Height	90 mm					
PALLET INFORMATION	Quantity of Cases Per Pallet Layer	11 Cases	Pallet Height	1.15 MTR			
	Quantity of Layers Per Pallet	11 Layers	Pallet Gross Weight	166.78 kg			
	Quantity of Cases Per Pallet	121 Cases					
PACKAGING	Inner Component Packaging						
	Type	Materials	Weight	Recycled Plastic %	Recyclable	Returnable	Composite
	Tub	Steel	6.77 g	- %			
	Tub	Other	13.26 g	- %			
	Outer Case Packaging						
	Type	Materials	Weight	Recycled Plastic %	Recyclable	Returnable	Composite
	Case	Plastic	16.2 g	- %			
	Case	Paper/Cardboard	45 g	- %			
OTHER INFORMATION	Commodity Code	19059055					

CONTACT
INFORMATION

Address

Kellanova (previously Kellogg's)
Kellogg
Orange Tower
Salford
Greater Manchester
M50 2HF
England

P. (Phone) 07716254258

Commercial Contact

Chris Duffy
National Account Executive
Chris.Duffy@kellogg.com

The information on the [Erudus System](#) has been supplied by the manufacturers of the products and, whilst the owners of the Erudus System take steps to ensure the information is regularly updated, they give no warranty and no guarantee that the information is accurate. Product information and ingredients may change, please always read product labels carefully in addition to using the information provided by Erudus.

We do not accept liability for any inaccuracies or incorrect information contained on this site.
Please visit <http://www.erudus.com/terms-and-conditions> for full terms and conditions.