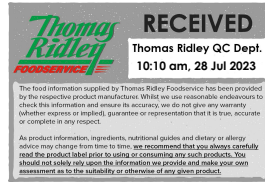


Supplier's Product Code : 410081
 Product Added : 17 November 2014
 Last Updated by Supplier : 05 November 2020
 erudus id : 325592a080b047699a5da92408bceba5



The information on the Erudus System has been supplied by the manufacturers of the products and, whilst the owners of the Erudus System take steps to ensure the information is regularly updated, they give no warranty and no guarantee that the information is accurate. Product information and ingredients may change, please always read product labels carefully in addition to using the information provided by Erudus One.

We do not accept liability for any inaccuracies or incorrect information contained on this site. Please visit <http://www.erudus.com/terms-and-conditions> for full terms and conditions.

FLO FAIRTRADE CASTER SUGAR 10X1KG 6075

Short Product Name:
 CASTER SUGAR

Product Description:
 FLO FAIRTRADE Caster Sugar 1kg - A free flowing white crystalline sugar that is produced to a tight colour specification with consistent crystal size.

General Information

Food/Drink :	Food
Product Category :	Ambient
Generic Product Type :	Sugar & Sweeteners

Supplier's Product Code :
410081

Supplier: Tate & Lyle Sugars
 Thames Refinery
 Factory Road, Silvertown
 London

E16 2EW
 England
 P: +44 207-540-1512

OUTER PRODUCT

Outer case Information

Outer Case GTIN :	5010115026975	Outer Case Length :	390 mm
Packaging Type Description :	Paper Bag	Outer Case Width :	196 mm
Total Quantity of Inner Units in Outer Case :	10 Units	Outer Case Height :	145 mm
Is Trade Item Splittable? :	No	Product Gross Weight :	10.13 kg
		Product Net Weight :	10.00 kg

Pallet Information

Quantity of Cases Per Pallet Layer :	15 Cases	Pallet Height :	1.30 MTR
Quantity of Layers Per Pallet :	8 Layers	Pallet Gross Weight :	1,242.40 kg
Quantity of Cases Per Pallet :	120 Cases		

Logistical Information

Shelf Life from Time of Production :	0 Days	Minimum Order Quantity :	1 Cases
Guaranteed Shelf Life on Delivery :	Not specified.	Delivery Lead Time :	4 Days

Waste Packaging Weight - Outer Case

Glass :	0.00 g	Aluminium :	0.00 g
Plastic :	21.40 g	Steel :	0.00 g
Percentage Recycled Plastic :	Not specified.	Other :	0.00 g
Paper/Board :	0.00 g		

Waste Packaging Weight - Transport Packaging

Plastic :	415.00 g	Wood Total :	Not specified.
Paper/Board :	102.00 g	Is Pallet Returnable? :	-
Percentage Recycled Plastic :	Not specified.		

Other Information

Supplier Comments:
 n/a

INNER PRODUCT

Origin Information

Product Country of Origin/Place of Provenance : United Kingdom

Additional Origin Details :

The product is refined in the UK from raw sugar sourced from a variety of countries.
Argentina
Guyana
Swaziland
Belize
Honduras
Zambia
Brazil
Jamaica
Costa Rica
Malawi
El Salvador
Mozambique
Fiji
Nicaragua
Guadeloupe
Reunion
Guatemala
South Africa

Inner Pack Information

Internal GTIN : 5010115926978

Packaging Type Description : Paper Bag

Variable Weight Consumer Item : No

Net Drained Weight : Not specified.

Inner Unit Length : 102 mm

Inner Unit Height : 77 mm

Inner Unit Width : 164 mm

Inner Product Weight : Not specified.

Inner Product Weight Units : g

Weight/Volume :

1KG

Handling Information

Directions For Use :

Granulated sugar adds sweetness and texture without any other colour or flavour. It helps retain moisture and improves shelf life in finished goods.

Storage Instructions :

Store in ambient conditions, avoiding extremes in temperature and humidity.

Dietary Information

Ingredients :

Cane Sugar

Product contains:

GM Protein/DNA :	No
Celery/Celeriac (and products thereof) :	No
Lupin (and products thereof) :	No
Eggs (and products thereof) :	No
Fish (and products thereof) :	No
Soybeans (and products thereof) :	No
Milk (and products thereof) :	No
Mustard (and products thereof) :	No
Peanuts (and products thereof) :	No
Sesame Seeds (and products thereof) :	No
Crustacea (and products thereof) :	No
Molluscs (and products thereof) :	No
Nuts (and products thereof) :	No
Almond nuts :	No
Hazelnuts :	No
Walnuts :	No
Cashew nuts :	No
Pecan nuts :	No
Brazil nuts :	No
Pistachio nuts :	No
Macadamia nuts :	No
Queensland nuts :	No
Cereals Containing Gluten :	No
Wheat (and products thereof) :	No
Rye (and products thereof) :	No
Barley (and products thereof) :	No
Oats (and products thereof) :	No
Spelt (and products thereof) :	No
Kamut (and products thereof) :	No
Gluten content <20ppm :	-
Hydrogenated Vegetable Oil/Fat :	No
Palm Oil :	No
Sulphur Dioxide and Sulphites :	Below 10mg per kg/litre (not 0 mg)
Sulphur Dioxide/Sulphites Concentration :	<= 1 mg/kg

Product contains :

Artificial Antioxidants :	No
Artificial Colours :	No
Artificial Flavourings :	No
Artificial Flavour Enhancers :	No
Artificial Preservatives :	No
Artificial Sweeteners :	No

Product suitability:

Suitable for a Vegetarian Diet :	Yes
Suitable for a Vegan Diet :	Yes
Suitable for Sufferers of Lactose Intolerance :	Yes
Suitable for Coeliacs :	Yes
Approved for a Halal Diet :	Yes
Approved for a Kosher Diet :	Yes
HFSS (High in Fat, Salt and Sugar) :	-

Allergen Statement :

Not specified.

Nutritional Information

Average Serving :	Not specified.
Count per 100g :	Not specified.
Count Per Pack :	Not specified.
Energy per 100 G/ML :	1,700.00 kJ
Energy per 100 G/ML :	400.00 kcal
Fat per 100 G/ML :	<0.5 g
- of which Saturates per 100 G/ML :	<0.1 g
- of which Mono-unsaturates per 100 G/ML :	Not specified.
- of which Polyunsaturates per 100 G/ML :	Not specified.
Trans Fats per 100 G\ML :	Not specified.
Carbohydrate Per 100 G/ML :	100 g
- of which Sugars per 100 G/ML :	100 g
- of which Polyols per 100 G/ML :	Not specified.
- of which Starch per 100 G/ML :	Not specified.
Fibre per 100 G/ML :	0 g
Protein per 100 G/ML :	0 g
Salt per 100 G/ML :	0.01 g
Sodium per 100 G\ML :	<0.01 g

Vitamin A per 100g :	Not specified.
Vitamin C per 100g :	Not specified.
Folate/Folic Acid per 100g :	Not specified.
Calcium per 100g :	Not specified.
Iron per 100g :	Not specified.
Zinc per 100g :	Not specified.
Cholesterol per 100 G/ML (UK/FR) :	Not specified.
Non Milk Extrinsic Sugars per 100gm :	Not specified.
Alcoholic Strength %Vol :	Not specified.
Fat Percentage in Dry Matter per 100g :	Not specified.

Waste Packaging Weight - Inner Unit

Glass :	0.00 g
Plastic :	0.00 g
Percentage Recycled Plastic :	Not specified.
Paper/Board :	8.00 g

Aluminium :	0.00 g
Steel :	0.00 g
Other :	0.00 g

Accreditations / Certifications / Assurance Schemes

BRCGS Certified Production :	Yes
Red Tractor :	No
Fairtrade :	Yes
Marine Stewardship Council Certified (MSC) :	No
Organic :	No
SALSA (Safe & Local Supplier Approval) :	No
British Lion Mark :	No
RSPCA Assured :	No
LEAF Marque (Linking Environment and Farming) :	No
Rainforest Alliance :	No
Food for Life Supplier Scheme :	No
Quality Meat Scotland :	No
Farm Assured Welsh Livestock :	No
Northern Ireland Beef & Lamb Farm Quality Assurance Scheme :	No
Quality Standard Mark (Beef/Lamb) :	No
Roundtable of Sustainable Palm Oil (RSPO) :	No
School Approved (The Requirement for School Food Regulation 2014) :	No
IFS Food Standard :	No
Best Aquaculture Practices (BAP) Certification :	No
ISO 14001 (Environmental System) :	No
FSSC 22000 :	No

Other Accreditation : N/A	
Intra Stat/Taric Code :	Not specified.
Commodity Code :	Not specified.
Identification/Health Marks :	Not specified.

Standards Testing

Do you undertake trend analysis of microbiological results?: No

Is shelf life testing undertaken?: No

Microbiological Standards

Organism	Frequency	Target	Maximum	Sample (g or ml)	Note
Aerobic Colony Count (ACC) (cfu/g or ml)	Monthly	<20	20	-	Mesophilic bacteria/g-
E. Coli (cfu/g or ml)	Quarterly	<0	0	-	Not detected in 1g.
Moulds (cfu/g or ml)	Weekly	<1	1	-	1 cfu max.
Salmonella	Quarterly	<0	0	25g	detected in 25g.
Staphylococcus Aureus (cfu/g or ml)	Quarterly	<0	0	1g	Not detected in 1g.
Yeast (cfu/g or ml)	Monthly	<1	1	-	1 cfu max.

Analytical Standards

Not available.