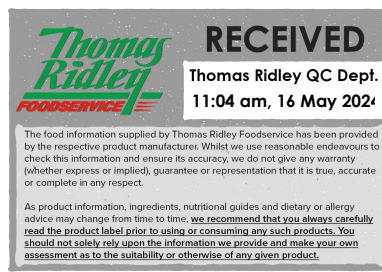


Changed May 16, 2024 08:38
Reviewed May 16, 2024 08:38
Erudus ID e441427d6ff84ee6b2d13338683d778e
Version 2.0



60195

Major Barbecue Mari-Base 2 x 1.25L

Barbecue Mari-base 2x1.25litre

PRODUCT DESCRIPTION

Major Barbecue Mari Base 2x 1.25L More than just a marinade, this rich oak smoked flavour that is sweet and tangy is highly versatile and instantly adds an authentic barbecue flavour to any dish. Tenderises and penetrates meat, superb to flavour fish and vegetables. Water-based, therefore ideal to enhance sauces, dips and sandwich fillings. Massage into protein, brush on or mix in. (Yields up to 166 servings per case.) Gluten Free – Halal Suitable – Vegan – Vegetarian.

Brand	Givaudan UK Ltd
Manufacturer Product Code	RH Amar: MJ122 - GIV: 23442 (2x1.25l)
Manufacturer Version Number	22277
Product Type	Food
Product Category	Gravy / Bouillon
Storage Type	Ambient
Erudus ID	e441427d6ff84ee6b2d13338683d778e
Specification Type	Generic



Inner Component GTIN	5023212234426
Outer Case GTIN	5023212244326



INGREDIENTS

Ingredient Declaration

Water, tomato paste, sugar, brown sugar, malt vinegar (BARLEY), sunflower oil, salt, smoke flavorings, yeast extract, modified waxy maize starch, acidity regulators: trisodium phosphate and lactic acid. Onion powder, preservative: potassium sorbate.

ALLERGENS

Product Contains:

Celery/Celeriac	No
Cereals Containing Gluten	Yes
Barley	Yes
Oats	No
Rye	No
Wheat (including Spelt and Khorasan)	No
Crustacea	No
Eggs	No
Fish	No
Lupin	No
Milk	No
Molluscs	No
Mustard	No
Nuts (Tree)	No
Almond nuts	No
Brazil nuts	No
Cashew nuts	No
Hazelnuts	No
Macadamia (Queensland) nuts	No
Pecan nuts	No
Pistachio nuts	No
Walnuts	No
Peanuts	No
Sesame Seeds	No
Soybeans	No
Sulphur Dioxide and Sulphites	No

Additional Allergen Information

Barley Malt Vinegar BARLEY, GLUTEN <5 ppm (<1 ppm in finished product)

SUPPLEMENTARY INGREDIENT INFORMATION

Palm Oil	No
Hydrogenated Vegetable Oil/Fat	No
GM Protein/DNA	No

ADDITIVES

Product Contains:

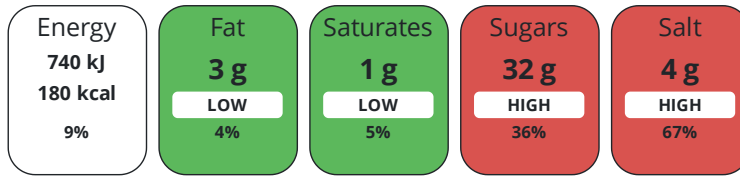
Artificial Antioxidants	No
Artificial Colours	No
Artificial Flavour Enhancers	No
Artificial Flavourings	No
Artificial Preservatives	Yes
Artificial Sweeteners	No

DIET SUITABILITY

Vegan Diet	Suitable for	Vegetarian Diet	Suitable for
Halal Diet	No	Kosher Diet	No

NUTRITIONAL INFORMATION

Each 100g/ml portion contains:



of your reference intake.

Typical values per 100g/ml : Energy 180kcal / 740kJ

Nutrient	per 100ml	RI per 100ml
Energy (kJ)	740 kJ	9%
Energy (kcal)	180 kcal	9%
Fat	3 g	4%
of which Saturates	1 g	5%
Carbohydrate	34 g	13%
of which Sugars	32 g	36%
Protein	2 g	4%
Salt	4 g	67%

SUPPLEMENTARY NUTRITIONAL INFORMATION

HANDLING & STORAGE INFORMATION

Directions For Use

Place meat, fish or veg into mari-bag. Add recommended amount of marinade then seal, massage and refrigerate. Alternatively place onto a tray and brush with marinade then cook as require. For best results marinade for 2 hours or longer. Recommended usage is 15ml of paste per 100g protein.

Storage Instructions

Before opening store in a cool dry place. Once opened use within 30 days or by the best before date and keep pot tightly closed and chilled (<5degC) between use.

Shelf Life from Time of Production

548 Days

Exempt From Shelf Life Labelling

No

ACCREDITATIONS/ CERTIFICATIONS/ ASSURANCE SCHEMES

BRCGS Certified

Food for Life Supplier Scheme

Other Accreditation

ORIGIN

Product Country of Origin/Place of

Netherlands (the)

Provenance

Additional Origin Details

Barbecue Mari-base is manufactured in The Netherlands. Water (Netherlands), Tomato puree (Spain, Portugal), Molasses (Mauritius), Sugar (UK), Malt Vinegar (UK) Sunflower oil (UK, Holland, Belgium, France, Germany), Salt (UK), Oak smoke flavouring (USA), Smoke flavouring (USA), Modified Starch (Netherlands), Yeast extract (Brazil), Lactic acid (China), Tri-sodium phosphate (UK), Onion powder (USA), Potassium Sorbate (China). Cellulose gum (Finland, China),

PRODUCT CHARACTERISTICS

Standards Testing

Do you undertake trend analysis of microbiological results?

Yes

Is shelf life testing undertaken?

Yes

Microbiological Standards

Organism	Description	Frequency	Target	Maximum	Sample (g or ml)
Total Viable Count (TVC) (cfu/g or ml)		Every Batch	<10000	100000	100

Organism	Description	Frequency	Target	Maximum	Sample (g or ml)
Enterobacteriaceae (cfu/g or ml)		Every Batch	<100	100	100
Staphylococcus Aureus (cfu/g or ml)		Every Batch	<100	100	100
Clostridium Perfringens (cfu/g or ml)		Every Batch	<100	100	25
Bacillus Cereus (cfu/g or ml)		Every Batch	<500	500	25
E. Coli (cfu/g or ml)		Every Batch	<10	10	100
Listeria SPP (cfu/g or ml)		Every Batch	=0	0	25
Salmonella (cfu/g or ml)		Every Batch	=0	0	25
Yeast (cfu/g or ml)		Every Batch	<500	500	100
Moulds (cfu/g or ml)		Every Batch	<500	500	100

Analytical Standards

Test	Description	Frequency	Target	Range	Sample (g or ml)
pH		Every Batch	=4	2 to 4	100

CONFIGURATION

Case Configuration

Total Quantity of Inner Components in Outer Case	2 Units
Is the Outer Case Splittable?	No
Inner Pack Configuration	

PRODUCT WEIGHTS

Inner Component

Variable Weight Consumer Item	No
Inner Component Volume	1.25 litre

Outer Case

Outer Case Gross Weight	3.21 kg
Outer Case Net Weight	3 kg

PRODUCT DIMENSIONS

Inner Component

Inner Component Depth	140 mm
Inner Component Width	90 mm
Inner Component Height	177 mm

Outer Case

Outer Case Depth	190 mm
Outer Case Width	138 mm
Outer Case Height	181 mm

PALLET INFORMATION

Quantity of Cases Per Pallet Layer	40 Cases
Quantity of Layers Per Pallet	6 Layers
Quantity of Cases Per Pallet	240 Cases
Pallet Height	1.2 MTR
Pallet Gross Weight	792 kg

PACKAGING

Inner Component Packaging

Type	Materials	Weight	Recycled Plastic %	Recyclable	Returnable	Composite
Bottle	Plastic	212 g	- %			

Outer Case Packaging

Type	Materials	Weight	Recycled Plastic %	Recyclable	Returnable	Composite
Case	Plastic	15 g	- %			
Case	Paper/Cardboard	7 g	- %			

Transport Packaging

Type	Materials	Weight	Recycled Plastic %	Recyclable	Returnable	Composite
Other	Plastic	1000 g	- %			
Other	Paper/Cardboard	6000 g	- %			
Other	Wood	15000 g	- %			

OTHER INFORMATION

Intrastat/Taric Code	2104 2000
Identification/Health Marks	NL 3383 EC

Manufacturer Comments

1.25 litres yields up to 83 servings.

CONTACT INFORMATION

Address

Givaudan UK Ltd
Chippenham Drive
Kingston
Milton Keynes
MK10 0AE
England

P: (Phone) 01908282828

Technical Contact

Vytis Pocius
Assistant Technical Manager
vytis.pocius@givaudan.com

P: (Phone) 01933 423541

Complaints Contact

Nigel Evans
Technical Manager
nigel.evans@givaudan.com

P: (Phone) 01933 423543

The information on the [Erudus System](#) has been supplied by the manufacturers of the products and, whilst the owners of the Erudus System take steps to ensure the information is regularly updated, they give no warranty and no guarantee that the information is accurate. Product information and ingredients may change, please always read product labels carefully in addition to using the information provided by Erudus.

We do not accept liability for any inaccuracies or incorrect information contained on this site.
Please visit <http://www.erudus.com/terms-and-conditions> for full terms and conditions.