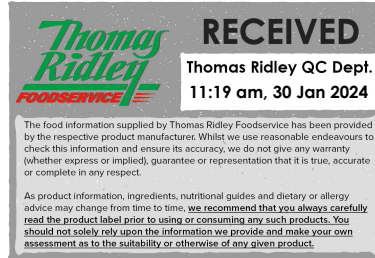


Changed Jan 30, 2024 11:01

Reviewed Jan 30, 2024 11:01

Erudus ID 6e5d119639f245e8943b1a5a2914a445

Version 2.0



Thomas Ridley
FOODSERVICE

RECEIVED
Thomas Ridley QC Dept.
11:19 am, 30 Jan 2024

The food information supplied by Thomas Ridley Foodservice has been provided by the respective product manufacturer. Whilst we use reasonable endeavours to check this information and ensure its accuracy, we do not give any warranty (whether express or implied), guarantee or representation that it is true, accurate or complete in any respect.

As product information, ingredients, nutritional guides and dietary or allergy advice may change from time to time, we recommend that you always carefully read the product label prior to using or consuming any such products. You should not solely rely upon the information we provide and make your own assessment as to the suitability or otherwise of any given product.



Kellogg's Crunchy Nut Cereal Portion Pack 40x35g

Crunchy Nut Cereal 40x1.4kg

PRODUCT DESCRIPTION

Seize a moment of pure enjoyment in your busy day with Kellogg's Crunchy Nut breakfast cereal. Irresistibly crunchy flakes of golden corn drizzled in yummy honey and chopped peanuts. Enriched with 8 vitamins & minerals including B vitamins, iron and 50% vitamin D daily needs, and that's not all, you'll find no artificial colours or flavours here. Go on, give in to the mouth-wateringly moreish, sweet and nutty crunch and give your tastebuds a real treat at any time of the day. Great for snacking at work or evenings in front of the TV - the trouble is they taste too good! *Tested against the top selling adult cereal brands in the UK

Brand	Kellanova (previously Kellogg's)
Manufacturer Product Code	5139287000
Product Type	Food
Product Category	Breakfast Cereal
Storage Type	Ambient
Erudus ID	6e5d119639f245e8943b1a5a2914a445
Specification Type	Cereals



Inner Component GTIN	5050083392863
Outer Case GTIN	5050083392870



INGREDIENTS

Ingredient Declaration

Maize, sugar, PEANUTS (6%), BARLEY malt extract, molasses, honey (1%), salt, niacin, iron, vitamin B6, riboflavin, thiamin, folic acid, vitamin D, vitamin B12.

ALLERGENS

Product Contains:

Celery/Celeriac	No	Mustard	No
Cereals Containing Gluten	Yes	Nuts (Tree)	No
Barley	Yes	Almond nuts	No
Oats	No	Brazil nuts	No
Rye	No	Cashew nuts	No
Wheat (including Spelt and Khorasan)	No	Hazelnuts	No
Crustacea	No	Macadamia (Queensland) nuts	No
Eggs	No	Pecan nuts	No
Fish	No	Pistachio nuts	No
Lupin	No	Walnuts	No
Milk	No	Peanuts	Yes
Molluscs	No	Sesame Seeds	No
		Soybeans	No
		Sulphur Dioxide and Sulphites	No

SUPPLEMENTARY
INGREDIENT
INFORMATION
ADDITIVES

GM Protein/DNA No

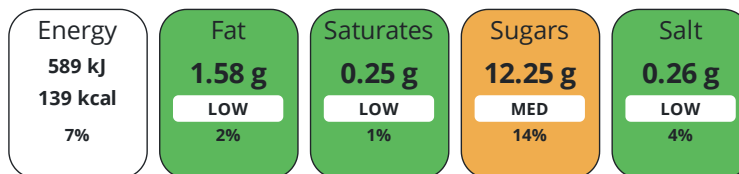
Product Contains:

DIET
SUITABILITY

Vegan Diet	No	Vegetarian Diet	Suitable for
Halal Diet	Suitable for	Kosher Diet	Suitable for

NUTRITIONAL
INFORMATION

Each 35g/ml serving contains:



of your reference intake.

Typical values per 35g/ml : Energy 139kcal / 589kj

Nutrient	per 100g	RI per 100g	per 35g serving	RI per 35g serving
Energy (kJ)	1683 kJ	20%	589.1 kJ	7%
Energy (kcal)	398 kcal	20%	139.3 kcal	7%
Fat	4.5 g	6%	1.6 g	2%
of which Saturates	0.7 g	4%	0.2 g	1%
Carbohydrate	82 g	32%	28.7 g	11%
of which Sugars	35 g	39%	12.3 g	14%
Fibre	2.5 g		0.9 g	
Protein	6 g	12%	2.1 g	4%
Salt	0.75 g	13%	0.3 g	5%

Serving Size 35 g

SUPPLEMENTARY
NUTRITIONAL
INFORMATION

HFSS (HIGH IN
FAT, SALT AND
SUGAR)
HANDLING &
STORAGE
INFORMATION

HFSS Status Yes

Directions For Use

Eat as directed

Storage Instructions

Store in a cool dry place.

Shelf Life from Time of Production	365 Days	Exempt From Shelf Life Labelling	No
---	----------	---	----

ORIGIN

Product Country of Origin/Place of Provenance United Kingdom

PRODUCT
CHARACTERISTICS

Standards Testing			
Do you undertake trend analysis of microbiological results?	No	Is shelf life testing undertaken?	No

CONFIGURATION

Case Configuration		Inner Pack Configuration	
Total Quantity of Inner Components in Outer Case	40 Units	Count per Inner Component	1
Is the Outer Case Splittable?	No		

PRODUCT WEIGHTS

Inner Component	
Variable Weight Consumer Item	No
Inner Component Weight	1.4 kg
Outer Case	
Outer Case Gross Weight	2.07 kg
Outer Case Net Weight	1.4 kg

PRODUCT DIMENSIONS

Inner Component	
Inner Component Depth	32 mm
Inner Component Width	90 mm
Inner Component Height	126 mm
Outer Case	
Outer Case Depth	372 mm
Outer Case Width	176 mm
Outer Case Height	267 mm

PALLET INFORMATION

Quantity of Cases Per Pallet Layer	10 Cases	Pallet Height	2.44 MTR
Quantity of Layers Per Pallet	12 Layers	Pallet Gross Weight	306.18 kg
Quantity of Cases Per Pallet	120 Cases		

PACKAGING

Inner Component Packaging						
Type	Materials	Weight	Recycled Plastic %	Recyclable	Returnable	Composite
Box	Paper/Cardboard / Cardboard	11.41 g	- %	Yes	No	No
Inner Pack Packaging						
Type	Materials	Weight	Recycled Plastic %	Recyclable	Returnable	Composite
Bag	Plastic	1.31 g	- %	Yes	No	No
Outer Case Packaging						
Type	Materials	Weight	Recycled Plastic %	Recyclable	Returnable	Composite
Case	Paper/Cardboard / Cardboard	157.2 g	- %	Yes	No	No

OTHER INFORMATION

Commodity Code	19041010
-----------------------	----------

CONTACT INFORMATION

Address
 Kellanova (previously Kellogg's)
 Kellogg
 Orange Tower
 Salford
 Greater Manchester
 M50 2HF
 England

P: (Phone) 07716254258

The information on the [Erudus System](#) has been supplied by the manufacturers of the products and, whilst the owners of the Erudus System take steps to ensure the information is regularly updated, they give no warranty and no guarantee that the information is accurate. Product information and ingredients may change, please always read product labels carefully in addition to using the information provided by Erudus.

We do not accept liability for any inaccuracies or incorrect information contained on this site.
Please visit <http://www.erudus.com/terms-and-conditions> for full terms and conditions.