

Thomas Ridley
FOODSERVICE

RECEIVED
Thomas Ridley QC Dept.
3:56 pm, 27 Jul 2023

The food information supplied by Thomas Ridley Foodservice has been provided by the respective product manufacturer. Whilst we use reasonable endeavours to check this information and ensure its accuracy, we do not give any warranty (whether express or implied), guarantee or representation that it is true, accurate or complete in any respect.

As product information, ingredients, nutritional guides and dietary or allergy advice may change from time to time, we recommend that you always carefully read the product label prior to using or consuming any such products. You should not solely rely upon the information we provide and make your own assessment as to the suitability or otherwise of any given product.

Dr Pepper 500ml



EAN
5000193034559

Target market(s)
GB

Components

Ingredients

Carbonated Water
Sugar
Colour (Caramel E150d)
Acid (Phosphoric Acid)
Sweeteners (Aspartame, Acesulfame K)
Preservative (Potassium Sorbate)
Flavourings including Caffeine

Nutrition

| | Per 100ml | Per 500ml (%*) |
|--------------------|----------------|-----------------------|
| Energy | 85kJ 20kcal | 425kJ 100kcal (5%) |
| Fat | 0g | 0g (0%) |
| Of which saturates | 0g | 0g (0%) |
| Carbohydrate | 4.9g | 25g (10%) |
| Of which sugars | 4.9g | 25g (28%) |
| Protein | 0g | 0g (0%) |
| Salt | 0g | 0g (0%) |

* Reference intake of an average adult (8400kJ/2000kcal)

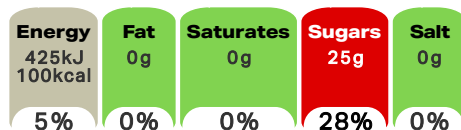
Calculated Nutrition

| | per 100ml | Per 500ml |
|------------------------|-----------|-----------|
| Energy (kJ) | 85 | 425 |
| Energy (kcal) | 20 | 100 |
| Fat (g) | 0 | 0 |
| of which saturates (g) | 0 | 0 |
| Carbohydrate (g) | 4.9 | 25 |
| of which sugars (g) | 4.9 | 25 |
| Protein (g) | 0 | 0 |
| Salt (g) | 0 | 0 |

Front of Pack Nutrition

Per Portion

A 500ml serving contains



Per 100ml: 85kJ / 20kcal

Reference intake of an average adult (8400kJ/2000kcal)

Nutrition Other Text

Reference intake of an average adult (8400kJ/2000kcal)

Reference Intake Statement

Reference Intake Statement - Reference intake of an average adult (8400kJ/2000kcal)

Product Description

Brand

Dr Pepper

Features

This product is GMO free
This product is gluten free
This product is allergen free
This product is suitable for vegetarians/vegans

Standardised Brand

Brand - Dr Pepper

Regulated Product Name

Sparkling Fruit Flavour Soft Drink with Sugar and Sweeteners.

Marketing

Company Name

CCEP

Company Address

CCEP GB UB8 1EZ

Product Marketing

I don't know what it is, but I like it!
For over a century, Dr Pepper's truly unique taste has been impossible to describe... a taste so misunderstood that's confusingly good. Grab it now, thank us later.
So odd, so good, So MiSuNderStoOd®

- Sparkling Fruit Flavour Soft Drink with Sugar and Sweeteners.

Serve cold for maximum refreshment.

Store in a cool and dry place

Please recycle.

Brand Marketing

Coca-Cola and the Environment
Coca-Cola is committed to making a positive difference - to the health of the planet, consumers and the communities it serves. The company is working hard to reduce its impact on the environment in everything it does - growing more while using less in areas such as energy and water use, waste reduction and recycling - and by encouraging people to think more about the positive impact they can have on their local environment.

Other Information

Contains caffeine

This product is allergen free

Contains added colours
Contains added preservatives
Contains added intense sweeteners

Further Description

I don't know what it is, but I like it!
For over a century, Dr Pepper's truly unique taste has been impossible to describe... a taste so misunderstood that's confusingly good. Grab it now, thank us later. So odd, so good, So MiSuNderStoOd®

Health & Lifestyle

Lifestyle

- Gluten free
- Suitable for Vegans
- Suitable for Vegetarians

Allergy Advice

Celery - Free From
Cereals Containing Gluten - Free From
Crustaceans - Free From
Eggs - Free From
Fish - Free From
Lupin - Free From
Milk - Free From
Molluscs - Free From
Mustard - Free From
Nuts - Free From
Peanuts - Free From
Sesame - Free From
Soya - Free From
Sulphur Dioxide/Sulphites - Free From

Additives

Genetically Modified Ingredients - Free From
Sweeteners - Contains

Storage & Usage

Storage Type

Type

Ambient

Preparation and Usage

Best served chilled

Storage

Best before: See side of cap or bottle neck.
Store cool and dry.

Brandbank Captured Pack Data

Pack Size

500ml e

Numeric Size

Numeric Size - 500

Recycling Info

Bottle - Plastic - Widely Recycled

Pack Type

Type - Bottle

Recycling Scheme

- OPRL

Customer Services

Manufacturers Address

CCEP
CCEP GB UB8 1EZ

Return To

CCEP
CCEP GB UB8 1EZ
0800 227711
Coca-Cola.co.uk

Telephone Helpline

0800 227711

Web Address

Coca-Cola.co.uk

Extended Data

Safety Warning

Contains a Source of Phenylalanine.

