

Fanta Orange 500ml



EAN  
40822938

Target market(s)  
GB

**Thomas Ridley**  
FOODSERVICE

**RECEIVED**  
Thomas Ridley QC Dept.  
3:56 pm, 27 Jul 2023

The food information supplied by Thomas Ridley Foodservice has been provided by the respective product manufacturers. Whilst we use reasonable endeavours to check this information and ensure its accuracy, we do not give any warranty (whether express or implied), guarantee or representation that it is true, accurate or complete in any respect.

As product information, ingredients, nutritional guides and dietary or allergy advice may change from time to time, we recommend that you always carefully read the product label prior to using or consuming any such products. You should not solely rely upon the information we provide and make your own assessment as to the suitability or otherwise of any given product.

## Components

### Ingredients

Carbonated Water  
Sugar  
Orange Juice from Concentrate (3.7%)  
Citrus Fruit from Concentrate (1.3%)  
Acids (Citric Acid, Malic Acid)  
Vegetable Extracts (Carrot, Pumpkin)  
Sweeteners (Acesulfame K, Sucralose)  
Preservative (Potassium Sorbate)  
Acidity Regulator (Sodium Citrates)  
Stabiliser (Guar Gum)  
Natural Orange Flavourings with other Natural Flavourings  
Antioxidant (Ascorbic Acid)

### Nutrition

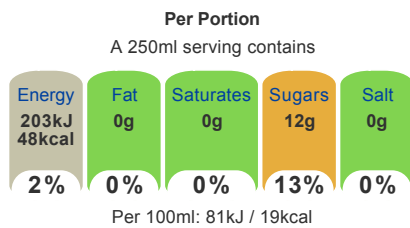
	Per 100ml	Per 500ml (%*)
Energy	81kJ	405kJ
	19kcal	95kcal (5%)
Fat	0g	0g (0%)
Of which saturates	0g	0g (0%)
Carbohydrate	4.6g	23g (9%)
Of which sugars	4.6g	2g (26%)
Protein	0g	0g (0%)
Salt	0g	0g (0%)

\*Reference intake of an average adult (8400kJ/2000kcal)

### Calculated Nutrition

	per 100ml	Per 250ml
Energy (kJ)	81	203
Energy (kcal)	19	48
Fat (g)	0	0
of which saturates (g)	0	0
Carbohydrate (g)	4.6	12
of which sugars (g)	4.6	12
Protein (g)	0	0
Salt (g)	0	0

### Front of Pack Nutrition



### Nutrition Other Text

Reference intake of an average adult (8400kJ/2000kcal)

### Reference Intake Statement

Reference Intake Statement - Reference intake of an average adult (8400kJ/2000kcal)

## Product Description

### Brand

Fanta

### Features

Made with fruit  
Made with fruit juice  
With natural flavours  
This product is GMO free  
This product is gluten free  
This product is allergen free  
This product is suitable for vegetarians/vegans

### Standardised Brand

Brand - Fanta

### Regulated Product Name

Sparkling Orange Fruit Drink with Sugar and Sweeteners

## Marketing

### Company Name

CCEP

### Company Address

CCEP GB UB8 1EZ

### Product Marketing

Bright, bubbly, instantly refreshing and great tasting. Fanta Orange is made with 100% natural flavours, fruit juice and is caffeine free.

Fanta's cool taste is made with...

Real fruit  
Natural flavours  
No artificial colours  
Sugar and sweeteners

Serve ice cold for maximum refreshment.

Keep cold in the fridge.

Please recycle.

### Brand Marketing

Coca-Cola and the Environment  
Coca-Cola is committed to making a positive difference - to the health of the planet, consumers and the communities it serves. The company is working hard to reduce its impact on the environment in everything it does - growing more while using less in areas such as energy and water use, waste reduction and recycling - and by encouraging people to think more about the positive impact they can have on their local environment.

### Other Information

This product is allergen free

Contains natural flavourings  
Contains added preservatives  
Contains added intense sweeteners  
Contains added antioxidants

### Further Description

Best Fanta Taste Ever\*\*

\*\*Tested amongst Fanta drinkers in blind taste testing in the UK.

## Health & Lifestyle

### Lifestyle

- Gluten free
- Suitable for Vegans
- Suitable for Vegetarians

### Allergy Advice

Celery - Free From  
Cereals Containing Gluten - Free From  
Crustaceans - Free From  
Eggs - Free From  
Fish - Free From  
Lupin - Free From  
Milk - Free From  
Molluscs - Free From  
Mustard - Free From  
Nuts - Free From  
Peanuts - Free From  
Sesame - Free From  
Soya - Free From  
Sulphur Dioxide/Sulphites - Free From

### Additives

Genetically Modified Ingredients - Free From  
Sweeteners - Contains

## Storage & Usage

### Storage Type

#### Type

Ambient

### Preparation and Usage

Best served ice cold or best served chilled

### Storage

Best before: See side of cap or bottle neck.  
Store cool and dry.

## Brandbank Captured Pack Data

### Pack Size

500ml e

### Numeric Size

Numeric Size - 500

### Recycling Info

Bottle - Plastic - Widely Recycled

### Pack Type

Type - Plastic Bottle

### Recycling Scheme

- OPRL

### Usage Count

Number of uses - Servings

2

### Usage Other Text

500ml = 2 x 250ml servings

## Customer Services

### Manufacturers Address

CCEP  
CCEP GB UB8 1EZ

### Return To

CCEP  
CCEP GB UB8 1EZ  
0800 227711  
Coca-Cola.co.uk

### Telephone Helpline

0800 227711

### Web Address

Coca-Cola.co.uk

## Extended Data

### Languages On Pack

- English

### Description Breakdown

Variant - Orange

