

## Diet Coke Glass 200ml



**EAN**

5017726157708

**Target market(s)**

GB

## Components

### Ingredients

Carbonated Water  
Colour (Caramel E150d)  
Sweeteners (Aspartame, Acesulfame K)  
Natural Flavourings including Caffeine  
Phosphoric Acid  
Citric Acid

### Nutrition

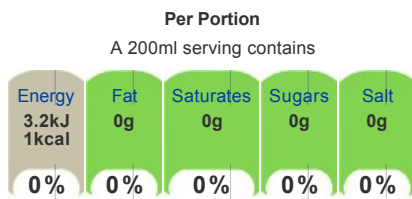
	Per 100ml	Per 200ml (%*)
Energy	1.6kJ	3.2kJ
	0.4kcal	1kcal (0%)
Fat	0g	0g (0%)
of which saturates	0g	0g (0%)
Carbohydrate	0g	0g (0%)
of which sugars	0g	0g (0%)
Protein	0g	0g (0%)
Salt	0g	0g (0%)

\*Reference intake of an average adult (8400kJ/2000kcal)

### Calculated Nutrition

	per 100ml	Per 200ml
Energy (kJ)	1.6	3.2
Energy (kcal)	0.4	1
Fat (g)	0	0
of which saturates (g)	0	0
Carbohydrate (g)	0	0
of which sugars (g)	0	0
Protein (g)	0	0
Salt (g)	0	0

### Front of Pack Nutrition



Per 100ml 1.6kJ/0.4kcal

Reference intake of an average adult (8400kJ/2000kcal)

## Product Description

### Brand

Diet Coke

### Features

No calories or sugar  
Only natural flavours  
No added preservatives  
This product is GMO free  
This product is gluten free  
This product is allergen free  
This product is suitable for vegetarians/vegans

### Standardised Brand

Brand - Diet Coke

### Regulated Product Name

Sparkling Low Calorie Soft Drink with Vegetable Extracts with Sweeteners

## Marketing

### Company Name

Coca-Cola Enterprises Ltd

### Company Address

Uxbridge,  
UB8 1EZ.

### Product Marketing

Love it light? Add some sparkle to your day, minus the calories with Diet Coke

Diet Coke is a sugar free, low calorie soft drink.

No Sugar

No Calories

Gluten-free, dairy-free and nut-free

Contains vegetable extracts and sweeteners

Serve over ice with a slice of lime.

Keep cold in the fridge.

Please recycle.

### Brand Marketing

Coca-Cola and the Environment

Coca-Cola is committed to making a positive difference - to the health of the planet, consumers and the communities it serves. The company is working hard to reduce its impact on the environment in everything it does - growing more while using less in areas such as energy and water use, waste reduction and recycling - and by encouraging people to think more about the positive impact they can have on their local environment.

### Other Information

Contains a Source of Phenylalanine.

### Nutritional Claims

No calories

No sugar

## Health & Lifestyle

### Lifestyle

- No Sugar
- Suitable for Vegans
- Suitable for Vegetarians

### Allergy Advice

Celery - Free From

Cereals Containing Gluten - Free From

Crustaceans - Free From

Eggs - Free From

Fish - Free From

Gluten - Free From

Lupin - Free From

Milk - Free From

Molluscs - Free From

Mustard - Free From

Nuts - Free From

Peanuts - Free From

Sesame - Free From

Soya - Free From

Sulphur Dioxide/Sulphites - Free From

### Additives

Genetically Modified Ingredients - Free From

### Allergy Other Text

This product is allergen free

### Additives Other Text

No added preservatives

Contains natural flavourings

Contains added colours

Contains added intense sweeteners

### Lifestyle Other Text

Contains caffeine

## Storage & Usage

### Storage Type

#### Type

Ambient

### Preparation and Usage

Best served chilled

### Storage

Store cool and dry

Best before end: See side of cap or bottle neck for date.

## Brandbank Captured Pack Data

### Pack Size

200ml e

### Numeric Size

Numeric Size - 200

### Recycling Info

Bottle - Glass - Widely Recycled

### Pack Type

Type - Bottle

### Recycling Scheme

- OPRL

## Customer Services

### Manufacturers Address

Coca-Cola Enterprises Ltd,  
Uxbridge,  
UB8 1EZ.

### Return To

Coca-Cola Enterprises Ltd,  
Uxbridge,  
UB8 1EZ.  
0800 227711  
Coca-Cola.co.uk

### Telephone Helpline

0800 227711

### Web Address

Coca-Cola.co.uk

*Diet Coke*

**Sparkling Low Calorie Soft Drink with  
Vegetable Extracts with Sweeteners**

#### INGREDIENTS

Carbonated Water, Colour (Caramel E150d),  
Sweeteners (Aspartame, Acesulfame K),  
Natural Flavourings Including Caffeine,  
Phosphoric Acid, Citric Acid.

#### WARNING STATEMENT

**Contains a Source of Phenylalanine.**

*Diet Coke*

NUTRITION INFORMATION TYPICAL VALUES			
Per:	100ml	200ml	(%)
Energy:	1.6kJ/ 0.4kcal	3.2kJ/ 1kcal	(0%)
Fat:	0g	0g	(0%)
of which saturates:	0g	0g	(0%)
Carbohydrate:	0g	0g	(0%)
of which sugars:	0g	0g	(0%)
Protein:	0g	0g	(0%)
Salt:	0g	0g	(0%)

\* Reference intake of an average adult (8400kJ/2000kcal)

250ml 

Energy 3.2kJ 1kcal	Fat 0g	Saturates 0g	Sugars 0g	Salt 0g
0%	0%	0%	0%	0%

100ml: 1.6kJ/0.4kcal