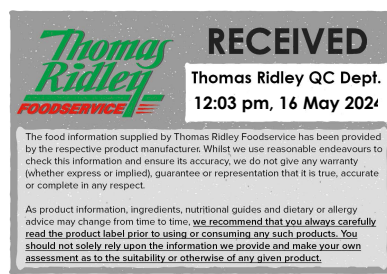


**Changed** May 16, 2024 09:09  
**Reviewed** May 16, 2024 09:09  
**Erudus ID** 572abaa57c684c00be07341c13c969a8  
**Version** 2.0



62195

# Major Fajita Mari-Base (2 x 1.25L)

Fajita Mari-base 2x1.25litre

## PRODUCT DESCRIPTION

Major Fajita Mari Base (2x 1.25L) More than just a marinade, this highly versatile product instantly adds a rich blend of Mexican spices to any dish. Tenderises and penetrates meat, superb to flavour fish and vegetables. Water-based, therefore ideal to enhance sauces, dips and sandwich fillings. Massage into protein, brush on or mix in. (Yields up to 166 servings per case). Gluten Free – Halal Suitable – Vegan – Vegetarian – No Declarable Allergens.

<b>Brand</b>	Givaudan UK Ltd
<b>Manufacturer Product Code</b>	RH Amar: MJ120 - GIV: 23444 (2x1.25l)
<b>Manufacturer Version Number</b>	2334
<b>Product Type</b>	Food
<b>Product Category</b>	Gravy / Bouillon
<b>Storage Type</b>	Ambient
<b>Erudus ID</b>	572abaa57c684c00be07341c13c969a8
<b>Specification Type</b>	Generic



<b>Inner Component GTIN</b>	5023212234440
<b>Outer Case GTIN</b>	5023212444320



## INGREDIENTS

### Ingredient Declaration

Water, sunflower oil, spices (chilli pepper, black pepper, cumin, red pepper, coriander), sugar, lime juice concentrate, salt, thickener; modified waxy maize starch, maltodextrin, yeast extract, herbs (oregano & thyme), onion powder, emulsifying salt; trisodium phosphate, garlic powder, vegetables, acidity regulator; citric acid, granulated garlic, red bell pepper powder, preservative: potassium sorbate, natural flavouring .

## ALLERGENS

Product Contains:

<b>Celery/Celeriac</b>	No
<b>Cereals Containing Gluten</b>	No
<b>Barley</b>	No
<b>Oats</b>	No
<b>Rye</b>	No
<b>Wheat (including Spelt and Khorasan)</b>	No
<b>Crustacea</b>	No
<b>Eggs</b>	No
<b>Fish</b>	No
<b>Lupin</b>	No
<b>Milk</b>	No
<b>Molluscs</b>	No
<b>Mustard</b>	No
<b>Nuts (Tree)</b>	No
<b>Almond nuts</b>	No
<b>Brazil nuts</b>	No
<b>Cashew nuts</b>	No
<b>Hazelnuts</b>	No
<b>Macadamia (Queensland) nuts</b>	No
<b>Pecan nuts</b>	No
<b>Pistachio nuts</b>	No
<b>Walnuts</b>	No
<b>Peanuts</b>	No
<b>Sesame Seeds</b>	No
<b>Soybeans</b>	No
<b>Sulphur Dioxide and Sulphites</b>	No

SUPPLEMENTARY INGREDIENT INFORMATION

<b>Palm Oil</b>	No
<b>Hydrogenated Vegetable Oil/Fat</b>	No
<b>GM Protein/DNA</b>	No

ADDITIVES

Product Contains:

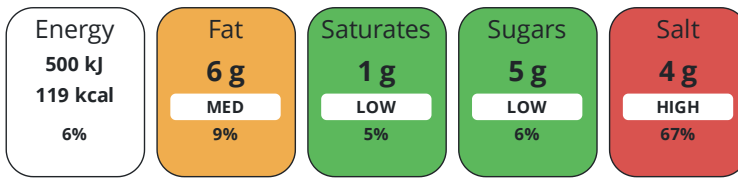
<b>Artificial Antioxidants</b>	No
<b>Artificial Colours</b>	No
<b>Artificial Flavour Enhancers</b>	No
<b>Artificial Flavourings</b>	No
<b>Artificial Preservatives</b>	Yes
<b>Artificial Sweeteners</b>	No

DIET SUITABILITY

<b>Vegan Diet</b>	Suitable for	<b>Vegetarian Diet</b>	Suitable for
<b>Halal Diet</b>	No	<b>Kosher Diet</b>	No

NUTRITIONAL INFORMATION

Each 100g/ml portion contains:



of your reference intake.

Typical values per 100g/ml : Energy 119kcal / 500kj

Nutrient	per 100ml	RI per 100ml
Energy (kJ)	500 kJ	6%
Energy (kcal)	119 kcal	6%
Fat	6 g	9%
of which Saturates	1 g	5%
Carbohydrate	12 g	5%
of which Sugars	5 g	6%
Protein	2 g	4%
Salt	4 g	67%

SUPPLEMENTARY NUTRITIONAL INFORMATION

HANDLING & STORAGE INFORMATION

Directions For Use

Place meat, fish or veg into mari-bag. Add recommended amount of marinade then seal, massage and refrigerate. Alternatively place onto a tray and brush with marinade then cook as require. For best results marinade for 2 hours or longer. Recommended usage is 15ml of paste per 100g protein.

Storage Instructions

Before opening store in a cool dry place. Once opened use within 30 days or by the best before date and keep pot tightly closed and chilled (<5degC) between use.

Shelf Life from Time of Production

548 Days

Exempt From Shelf Life Labelling

No

ACCREDITATIONS/ CERTIFICATIONS/ ASSURANCE SCHEMES

BRCGS Certified

Food for Life Supplier Scheme

Other Accreditation

ORIGIN

Product Country of Origin/Place of

Netherlands (the)

Provenance

Additional Origin Details

Fajita Mari-base is manufactured in The Netherlands. Water (Netherlands), Sunflower oil (UK, France, Holland, Belgium, Germany), Ground chilli (India, Spain), Ground black pepper (Vietnam, Indonesia, Sri Lanka), Ground cumin (Syria, Iran, China), Ground red pepper (China), Ground coriander (Bulgaria, Romania, Russia, Ukraine), Lime juice concentrate (Mexico), Sugar(UK), Salt (UK), Modified maize starch (Netherlands), Cellulose gum (Finland, China), Dried onion (USA), Maltodextrin (France), Dried garlic (China), Oregano (Turkey), Thyme (Morocco), Yeast extract (France), Trisodium phosphate (UK), Citric acid (Belgium), Lactic acid (China), Natural flavouring (USA), Potassium sorbate (China).

PRODUCT CHARACTERISTICS

Standards Testing

Do you undertake trend analysis of microbiological results?

Yes

Is shelf life testing undertaken?

Yes

Microbiological Standards

Organism	Description	Frequency	Target	Maximum	Sample (g or ml)
Total Viable Count (TVC) (cfu/g or ml)		Every Batch	<10000	100000	100
Enterobacteriaceae (cfu/g or ml)		Every Batch	<100	100	100
Staphylococcus Aureus (cfu/g or ml)		Every Batch	<100	100	100
Clostridium Perfringens (cfu/g or ml)		Every Batch	<100	100	25
Bacillus Cereus (cfu/g or ml)		Every Batch	<500	500	25
E. Coli (cfu/g or ml)		Every Batch	<10	10	100
Listeria SPP (cfu/g or ml)		Every Batch	=0	0	25
Salmonella (cfu/g or ml)		Every Batch	=0	0	25
Yeast (cfu/g or ml)		Every Batch	<500	500	100
Moulds (cfu/g or ml)		Every Batch	<500	500	100

#### Analytical Standards

Test	Description	Frequency	Target	Range	Sample (g or ml)
pH		Every Batch	=4	2 to 4	100

#### CONFIGURATION

##### Case Configuration

<b>Total Quantity of Inner Components in Outer Case</b>	2 Units
<b>Is the Outer Case Splittable?</b>	No
Inner Pack Configuration	

#### PRODUCT WEIGHTS

##### Inner Component

<b>Variable Weight Consumer Item</b>	No
<b>Inner Component Volume</b>	1.25 litre
Outer Case	
<b>Outer Case Gross Weight</b>	3.01 kg
<b>Outer Case Net Weight</b>	2.81 kg

#### PRODUCT DIMENSIONS

##### Inner Component

<b>Inner Component Depth</b>	140 mm
<b>Inner Component Width</b>	90 mm
<b>Inner Component Height</b>	177 mm

##### Outer Case

<b>Outer Case Depth</b>	190 mm
<b>Outer Case Width</b>	138 mm
<b>Outer Case Height</b>	181 mm

#### PALLET INFORMATION

<b>Quantity of Cases Per Pallet Layer</b>	40 Cases
<b>Quantity of Layers Per Pallet</b>	6 Layers
<b>Quantity of Cases Per Pallet</b>	240 Cases
<b>Pallet Height</b>	1.2 MTR
<b>Pallet Gross Weight</b>	745 kg

#### PACKAGING

##### Inner Component Packaging

Type	Materials	Weight	Recycled Plastic %	Recyclable	Returnable	Composite
Bottle	Plastic	212 g	- %			

#### Outer Case Packaging

Type	Materials	Weight	Recycled Plastic %	Recyclable	Returnable	Composite
Case	Plastic	15 g	- %			
Case	Paper/Cardboard	7 g	- %			

#### Transport Packaging

Type	Materials	Weight	Recycled Plastic %	Recyclable	Returnable	Composite
Other	Plastic	1000 g	- %			
Other	Paper/Cardboard	6000 g	- %			
Other	Wood	15000 g	- %			

#### OTHER INFORMATION

<b>Intrastat/Taric Code</b>	2104 2000
<b>Identification/Health Marks</b>	NL 3383 EC

#### Manufacturer Comments

1.25 litres yields up to 83 servings.

#### CONTACT INFORMATION

##### Address

Givaudan UK Ltd  
Chippenham Drive  
Kingston  
Milton Keynes  
MK10 0AE  
England

**P: (Phone)** 01908282828

##### Technical Contact

Vytis Pocius  
Assistant Technical Manager  
vytis.pocius@givaudan.com

**P: (Phone)** 01933 423541

##### Complaints Contact

Nigel Evans  
Technical Manager  
nigel.evans@givaudan.com

**P: (Phone)** 01933 423543

The information on the [Erudus System](#) has been supplied by the manufacturers of the products and, whilst the owners of the Erudus System take steps to ensure the information is regularly updated, they give no warranty and no guarantee that the information is accurate. Product information and ingredients may change, please always read product labels carefully in addition to using the information provided by Erudus.

We do not accept liability for any inaccuracies or incorrect information contained on this site.  
Please visit <http://www.erudus.com/terms-and-conditions> for full terms and conditions.