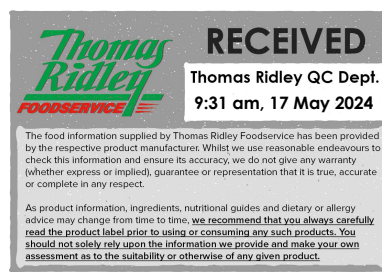


Changed May 17, 2024 07:17
Reviewed May 17, 2024 07:17
Erudus ID 3a329eaa74d24260961a77155dd0a4b4
Version 4.0



63024

All Butter Croissant

Butter Croissant

PRODUCT DESCRIPTION

An unbaked, frozen, pre proved all-butter croissant with a traditional crescent shape, rich, buttery taste and light open texture combined with crisp outer layers to give a truly authentic taste. Product Supplied frozen.

Brand	Lantmannen Unibake
Manufacturer Product Code	5790008022 (Q022)
Product Type	Food
Product Category	Croissants, Brioche & Pastries
Storage Type	Frozen
Erudus ID	3a329eaa74d24260961a77155dd0a4b4
Specification Type	Bakery Products



Outer Case GTIN 05413056006226



INGREDIENTS

Ingredient Declaration

Dough: WHEAT Flour (WHEAT Gluten), Butter (MILK) (20.6%), Water, Yeast, Sugar, Salt, Baking Improver (WHEAT Gluten, WHEAT Flour, Flour Treatment Agent (Ascorbic Acid E300)), EGG. Topping: EGG Wash.

ALLERGENS

Product Contains:

Celery/Celeriac	No
Cereals Containing Gluten	Yes
Barley	No
Oats	No
Rye	No
Wheat (including Spelt and Khorasan)	Yes
Crustacea	No
Eggs	Yes
Fish	No
Lupin	No
Milk	Yes
Molluscs	No
Mustard	No
Nuts (Tree)	May Contain
Almond nuts	May Contain
Brazil nuts	No
Cashew nuts	No
Hazelnuts	May Contain
Macadamia (Queensland) nuts	No
Pecan nuts	No
Pistachio nuts	No
Walnuts	No
Peanuts	No
Sesame Seeds	No
Soybeans	May Contain
Sulphur Dioxide and Sulphites	No

Risk Source:

Soybeans (Risk Source)	Line
-------------------------------	------

Additional Allergen Information

May contain traces of nuts and soya.

SUPPLEMENTARY INGREDIENT INFORMATION

Palm Oil	No
Hydrogenated Vegetable Oil/Fat	No
GM Protein/DNA	No

ADDITIVES

Product Contains:

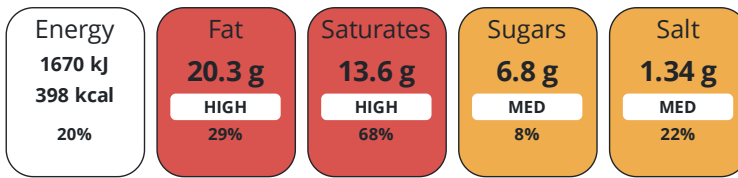
Artificial Antioxidants	No
Artificial Colours	No
Artificial Flavour Enhancers	No
Artificial Flavourings	No
Artificial Preservatives	No
Artificial Sweeteners	No

DIET SUITABILITY

Vegan Diet	No	Vegetarian Diet	Suitable for
Halal Diet	Certified	Kosher Diet	No

NUTRITIONAL INFORMATION

Each 100g/ml portion contains:



of your reference intake.

Typical values per 100g/ml : Energy 398kcal / 1670kJ

Nutrient	per 100g	RI per 100g	per 56g serving	RI per 56g serving
Energy (kJ)	1670 kJ	20%	935.2 kJ	11%
Energy (kcal)	398 kcal	20%	222.9 kcal	11%
Fat	20.3 g	29%	11.4 g	16%
of which Saturates	13.6 g	68%	7.6 g	38%
of which Mono-unsaturates	4.98 g		2.8 g	
of which Polyunsaturates	0.68 g		0.4 g	
Carbohydrate	45.4 g	17%	25.4 g	10%
of which Sugars	6.8 g	8%	3.8 g	4%
Fibre	3.5 g		2 g	
Protein	8.3 g	17%	4.6 g	9%
Salt	1.34 g	22%	0.8 g	13%
Sodium	527 mg		295.1 mg	
Serving Size			56 g	

SUPPLEMENTARY NUTRITIONAL INFORMATION

Trans Fats per 100 g/ml	0.21 g
-------------------------	--------

HANDLING & STORAGE INFORMATION

Directions For Use

Bake for 18 minutes at 190°C

Storage Instructions

Keep frozen at -18°C or below

Shelf Life from Time of Production	275 Days
------------------------------------	----------

Exempt From Shelf Life Labelling	No
----------------------------------	----

ACCREDITATIONS/ CERTIFICATIONS/ ASSURANCE SCHEMES

BRCGS Certified	Roundtable of Sustainable Palm Oil (RSPO)
-----------------	---

Other Accreditation

ORIGIN

Product Country of Origin/Place of Provenance	Belgium
---	---------

Additional Origin Details

N/A

PRODUCT CHARACTERISTICS

Standards Testing

Do you undertake trend analysis of microbiological results?	No
---	----

Is shelf life testing undertaken?	Yes
-----------------------------------	-----

Microbiological Standards

Organism	Description	Frequency	Target	Maximum	Sample (g or ml)
Bacillus Cereus (cfu/g or ml)		Every 6 months	<10	1000	56
Enterobacteriaceae (cfu/g or ml)		Every 6 months	<10	10	56
Staphylococcus Aureus (cfu/g or ml)		Every 6 months	<20	1000	56
Salmonella (cfu/g or ml)	25g	Every 6 months	=0	0	56
Yeast (cfu/g or ml)		Every 6 months	<1000	1000	56
Moulds (cfu/g or ml)		Every 6 months	<1000	1000	56
Coliforms (cfu/g or ml)		Every 6 months	<10	10	56
Listeria SPP (cfu/g or ml)	25g	Every 6 months	<0	0	56

Physical Standards

Test	Description	Frequency	Target	Range	Sample (g or ml)
Dimensions Height (mm)	as supplied	Every Batch	=44	30 to 49	70
Dimensions Width (mm)	as supplied	Every Batch	=86	73 to 98	70
Weight (g)	as supplied	Every Batch	=70	61 to 79	70

CONFIGURATION

Case Configuration

Total Quantity of Inner Components in Outer Case	48 Units
Is the Outer Case Splittable?	No
Inner Pack Configuration	

PRODUCT WEIGHTS

Inner Component

Variable Weight Consumer Item	Yes
--------------------------------------	-----

Outer Case

Outer Case Gross Weight	3.75 kg
Outer Case Net Weight	3.36 kg

PRODUCT DIMENSIONS

Inner Component

Inner Component Depth	660 mm
Inner Component Width	400 mm
Inner Component Height	0 mm

Outer Case

Outer Case Depth	392 mm
Outer Case Width	290 mm
Outer Case Height	167 mm

PALLET INFORMATION

Quantity of Cases Per Pallet Layer	10 Cases
Quantity of Layers Per Pallet	8 Layers
Quantity of Cases Per Pallet	80 Cases
Pallet Height	1.68 MTR
Pallet Gross Weight	328.5 kg

PACKAGING

Inner Component Packaging

Type	Materials	Weight	Recycled Plastic %	Recyclable	Returnable	Composite
Bag	Plastic	30 g	- %			

Outer Case Packaging

Type	Materials	Weight	Recycled Plastic %	Recyclable	Returnable	Composite
Case	Plastic	2 g	- %			
Case	Paper/Cardboard	360 g	- %			
Case	Other	1 g	- %			

Transport Packaging

Type	Materials	Weight	Recycled Plastic %	Recyclable	Returnable	Composite
Other	Plastic	240 g	- %			
Other	Paper/Cardboard	5 g	- %			
Other	Wood	28000 g	- %			

OTHER INFORMATION

Manufacturer Comments

N/A

CONTACT INFORMATION

Address

Lantmannen Unibake
Maidstone Road
Kingston
Milton Keynes
MK10 0BD
England

P: (Phone) 07780837112

Technical Contact

Inesa Jegoroviene
Senior Specifications Technologist
inesa.jegoroviene@lantmanen.com

P: (Phone) 07885418956

Complaints Contact

Ursula Jaillet
Technical Coordinator
ursula.jaillet@lantmannen.com

The information on the [Erudus System](#) has been supplied by the manufacturers of the products and, whilst the owners of the Erudus System take steps to ensure the information is regularly updated, they give no warranty and no guarantee that the information is accurate. Product information and ingredients may change, please always read product labels carefully in addition to using the information provided by Erudus.

We do not accept liability for any inaccuracies or incorrect information contained on this site.
Please visit <http://www.erudus.com/terms-and-conditions> for full terms and conditions.