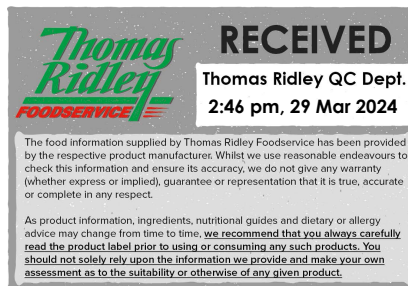


# Ribena Rtd Blackcurrant 500ml PET

Ribena Rtd Blackcurrant 500ml Pet

## PRODUCT DESCRIPTION

Blackcurrant juice drink. 12 x 500ml PET Bottle



<b>Brand</b>	Suntory Beverage & Food GB&I
<b>Manufacturer Product Code</b>	F40233
<b>Product Type</b>	Drink
<b>Product Category</b>	Juices and Cordials
<b>Storage Type</b>	Ambient
<b>Erudus ID</b>	b5d2c8d332db45b9a5e6c6b03684e66f
<b>Specification Type</b>	Legacy



<b>Inner Component GTIN</b>	5054267002333
<b>Outer Case GTIN</b>	05054267402331



## INGREDIENTS

### Ingredient Declaration

Water, Blackcurrant Juice from Concentrate (7%), Sugar, Thickener (Polydextrose), Acidity Regulator (Sodium Gluconate), Extracts of Carrot and Hibiscus, Vitamin C, Natural Blackcurrant Flavours, Acid (Citric Acid), Sweeteners (Acesulfame K, Sucralose).

## ALLERGENS

Product Contains:

<b>Celery/Celeriac</b>	No	<b>Mustard</b>	No
<b>Cereals Containing Gluten</b>	No	<b>Nuts (Tree)</b>	No
<b>Barley</b>	No	<b>Almond nuts</b>	No
<b>Oats</b>	No	<b>Brazil nuts</b>	No
<b>Rye</b>	No	<b>Cashew nuts</b>	No
<b>Wheat (including Spelt and Khorasan)</b>	No	<b>Hazelnuts</b>	No
<b>Gluten content &lt;20ppm</b>	Yes	<b>Macadamia (Queensland) nuts</b>	No
<b>Crustacea</b>	No	<b>Pecan nuts</b>	No
<b>Eggs</b>	No	<b>Pistachio nuts</b>	No
<b>Fish</b>	No	<b>Walnuts</b>	No
<b>Lupin</b>	No	<b>Peanuts</b>	No
<b>Milk</b>	No	<b>Sesame Seeds</b>	No
<b>Molluscs</b>	No	<b>Soybeans</b>	No
		<b>Sulphur Dioxide and Sulphites</b>	No

## SUPPLEMENTARY INGREDIENT INFORMATION

<b>Palm Oil</b>	No
<b>Hydrogenated Vegetable Oil/Fat</b>	No
<b>GM Protein/DNA</b>	No

ADDITIVES

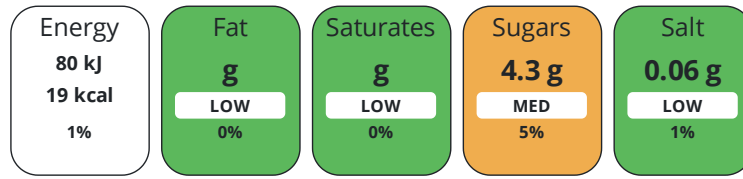
Product Contains:

<b>Artificial Antioxidants</b>	No	<b>Artificial Flavourings</b>	No
<b>Artificial Colours</b>	No	<b>Artificial Preservatives</b>	No
<b>Artificial Flavour Enhancers</b>	No	<b>Artificial Sweeteners</b>	Yes
<b>Suitable for Coeliacs</b>	Yes	<b>Halal Diet</b>	No
<b>Kosher Diet</b>	No	<b>Vegetarian Diet</b>	Suitable for
<b>Vegan Diet</b>	Suitable for		

DIET SUITABILITY

NUTRITIONAL INFORMATION

Each 100g/ml portion contains:



of your reference intake.

Typical values per 100g/ml : Energy 19kcal / 80kj

Nutrient	per 100g/ml	RI per 100g/ml	per 250g/ml serving	RI per 250g/ml serving
<b>Energy (kJ)</b>	80 kJ	1%	200 kJ	2%
<b>Energy (kcal)</b>	19 kcal	1%	47.5 kcal	2%
<b>Fat</b>	0 g	0%	-	
<b>of which Saturates</b>	0 g	0%	-	
<b>Carbohydrate</b>	4.4 g	2%	11 g	4%
<b>of which Sugars</b>	4.3 g	5%	10.8 g	12%
<b>Protein</b>	< 0.5 g	1%	1.3 g	3%
<b>Salt</b>	0.06 g	1%	0.2 g	3%
<b>Serving Size</b>	250 g			

VITAMINS AND MINERALS

Nutrient	per 100g/ml	RI per 100g/ml	per 250g/ml serving	RI per 250g/ml serving
<b>Vitamin C</b>	32 mg	40%	80 mg	100%

SUPPLEMENTARY NUTRITIONAL INFORMATION

HFSS (HIGH IN FAT, SALT AND SUGAR)

<b>HFSS Status</b>	Yes
--------------------	-----

HANDLING & STORAGE INFORMATION

<b>Directions For Use</b>	This pack contains 2 serving Best served chilled
<b>Storage Instructions</b>	Once opened store in the fridge and drink within 4 days
<b>Shelf Life from Time of Production</b>	270 Days

ORIGIN

<b>Product Country of Origin/Place of Provenance</b>	United Kingdom
<b>Additional Origin Details</b>	As above

PRODUCT CHARACTERISTICS CONFIGURATION

Standards Testing

Case Configuration

Inner Pack Configuration

**Total Quantity of Inner Components in** 12 Units

**Outer Case**

**Is the Outer Case Splittable?** Yes

PRODUCT WEIGHTS

Inner Component

**Variable Weight Consumer Item** No

**Weight/Volume**

0.53KG/500ML

Outer Case

**Outer Case Gross Weight** 6.42 kg

**Outer Case Net Weight** 6.12 kg

PRODUCT DIMENSIONS

Inner Component

**Inner Component Depth** 66 mm

**Inner Component Width** 66 mm

**Inner Component Height** 220 mm

Outer Case

**Outer Case Depth** 265 mm

**Outer Case Width** 199 mm

**Outer Case Height** 223 mm

PALLET INFORMATION

**Quantity of Cases Per Pallet Layer** 22 Cases

**Pallet Height** 1.5 MTR

**Quantity of Layers Per Pallet** 6 Layers

**Pallet Gross Weight** 874.91 kg

**Quantity of Cases Per Pallet** 132 Cases

PACKAGING

Inner Component Packaging

Type	Materials	Weight	Recycled Plastic %	Recyclable	Returnable	Composite
Bottle	Plastic	23 g	- %			
Bottle	Paper/Cardboard	0.7 g	- %			

Outer Case Packaging

Type	Materials	Weight	Recycled Plastic %	Recyclable	Returnable	Composite
Case	Plastic	23 g	- %			
Case	Paper/Cardboard	0.7 g	- %			

OTHER INFORMATION CONTACT INFORMATION

Address

Suntory Beverage & Food GB&I  
2 Longwalk Road,  
Stockley Park  
Uxbridge  
UB11 1BA  
England

P: (Phone) 07785 432833

The information on the [Erudus System](#) has been supplied by the manufacturers of the products and, whilst the owners of the Erudus System take steps to ensure the information is regularly updated, they give no warranty and no guarantee that the information is accurate. Product information and ingredients may change, please always read product labels carefully in addition to using the information provided by Erudus.

We do not accept liability for any inaccuracies or incorrect information contained on this site.  
Please visit <http://www.erudus.com/terms-and-conditions> for full terms and conditions.