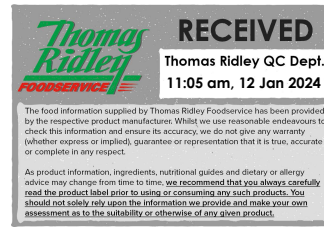


Changed Jan 11, 2024 18:30

Reviewed Jan 11, 2024 18:30

Erudus ID 7b23b4bc6c9245af93b08cebf2b49cf3

Version 2.0



**Thomas Ridley**  
FOODSERVICE

**RECEIVED**  
Thomas Ridley QC Dept.  
11:05 am, 12 Jan 2024

The food information supplied by Thomas Ridley Foodservice has been provided by the respective product manufacturer. Whilst we use reasonable endeavours to check this information and ensure its accuracy, we do not give any warranty (whether express or implied), guarantee or representation that it is true, accurate or complete in any respect.

As product information, ingredients, nutritional guides and dietary or allergy advice may change from time to time, we recommend that you always carefully read the product label prior to using or consuming any such products. You should not solely rely upon the information we provide and make your own assessment as to the suitability or otherwise of any given product.



# White Chocolate & Cranberry Tiffin 1x1000g

WHITE CHOCOLATE & CRANBERRY TIFFIN (1 x 12 ptn)

## PRODUCT DESCRIPTION

Crushed digestive biscuits, walnuts, cherries and cranberries bound together in a white chocolate fudge mixture and topped with white chocolate and more cranberries.

Brand	The Handmade Cake Co.
Manufacturer Product Code	072420
Product Type	Food
Product Category	Cakes and Tarts
Storage Type	Frozen
Erudus ID	7b23b4bc6c9245af93b08cebf2b49cf3
Specification Type	Bakery Products



Outer Case GTIN 5060044072420



## INGREDIENTS

### Ingredient Declaration

White Chocolate (26%) [Sugar, Cocoa Butter, Whole MILK Powder, Skimmed MILK Powder, Emulsifier (Lecithins (SOYA)), Natural Vanilla Flavouring], Digestive Biscuits (25%) [WHEAT Flour (with Calcium Carbonate, Iron, Niacin, Thiamin), Palm Oil, Sugar, Wholemeal WHEAT Flour, Partially Inverted Sugar Syrup, Raising Agents (E500, E503), Salt], Sweetened Condensed Milk (Whole MILK, Sugar), Vegetable Margarine [Palm Oil, Rapeseed Oil, Water, Salt, Emulsifier (E471), Natural Flavouring], WALNUTS (7%), Glacé Cherries (7%) [Cherries, Glucose-Fructose Syrup, Sugar, Acidity Regulator (Citric Acid), Colour (Anthocyanins)], Sweetened Dried Cranberries (6%) [Sugar, Cranberries, Sunflower Oil], Water, Sugar.

## ALLERGENS

Product Contains:

Celery/Celeriac	No	Mustard	No
Cereals Containing Gluten	Yes	Nuts (Tree)	Yes
Barley	No	Almond nuts	May Contain
Oats	No	Brazil nuts	May Contain
Rye	No	Cashew nuts	May Contain
Wheat (including Spelt and Khorasan)	Yes	Hazelnuts	May Contain
Crustacea	No	Macadamia (Queensland) nuts	May Contain
Eggs	May Contain	Pecan nuts	May Contain
Fish	No	Pistachio nuts	May Contain
Lupin	No	Walnuts	Yes
Milk	Yes	Peanuts	No
Molluscs	No	Sesame Seeds	No
		Soybeans	Yes
		Sulphur Dioxide and Sulphites	No

Risk Source:

<b>Eggs (Risk Source)</b>	Factory	<b>Almond nuts (Risk Source)</b>	Factory
<b>Brazil nuts (Risk Source)</b>	Raw Material	<b>Cashew nuts (Risk Source)</b>	Raw Material
<b>Hazelnuts (Risk Source)</b>	Factory	<b>Macadamia nuts (Risk Source)</b>	Raw Material
<b>Pecan nuts (Risk Source)</b>	Factory	<b>Pistachio nuts (Risk Source)</b>	Factory

SUPPLEMENTARY  
INGREDIENT  
INFORMATION

<b>Palm Oil</b>	Yes
<b>Hydrogenated Vegetable Oil/Fat</b>	No
<b>GM Protein/DNA</b>	No

ADDITIVES

Product Contains:

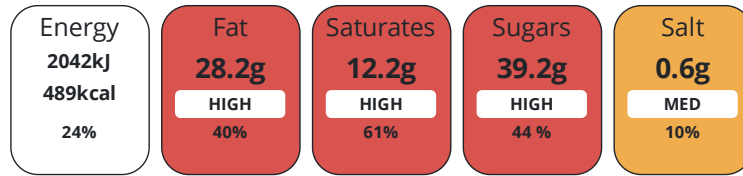
<b>Artificial Antioxidants</b>	No	<b>Artificial Flavourings</b>	No
<b>Artificial Colours</b>	No	<b>Artificial Preservatives</b>	No
<b>Artificial Flavour Enhancers</b>	No	<b>Artificial Sweeteners</b>	No

DIET  
SUITABILITY

<b>Vegan Diet</b>	No	<b>Vegetarian Diet</b>	Suitable for
<b>Halal Diet</b>	No	<b>Kosher Diet</b>	No

NUTRITIONAL  
INFORMATION

Each 100g/ml portion contains:



of your reference intake.

Typical values per 100g/ml : Energy 489kcal / 2042kJ

Nutrient	per 100g	RI per 100g	per 89g serving	RI per 89g serving
<b>Energy (kJ)</b>	2042 kJ	24%	1817.4 kJ	22%
<b>Energy (kcal)</b>	489 kcal	24%	435.2 kcal	22%
<b>Fat</b>	28.2 g	40%	25.1 g	36%
<b>of which Saturates</b>	12.2 g	61%	10.9 g	55%
<b>Carbohydrate</b>	52.1 g	20%	46.4 g	18%
<b>of which Sugars</b>	39.2 g	44%	34.9 g	39%
<b>Fibre</b>	1.8 g		1.6 g	
<b>Protein</b>	5.8 g	12%	5.2 g	10%
<b>Salt</b>	0.6 g	10%	0.5 g	8%

<b>Serving Size</b>	89 g
<b>Number of Servings</b>	12 Servings

SUPPLEMENTARY  
NUTRITIONAL  
INFORMATION

HFSS (HIGH IN  
FAT, SALT AND  
SUGAR)

<b>HFSS Status</b>	1
<b>HFSS Score</b>	25

HANDLING &  
STORAGE  
INFORMATION

**Directions For Use**

Defrost at room temperature, in the plastic wrapper, for 2 hours. Please re-cut around the portions before removing from the tray. Remove portions gently from the tray, ideally using a flat cake slice. Once defrosted store in a cool place, in an airtight container. Do not refreeze once defrosted. Consume within 5 days.

**Storage Instructions**

Keep frozen, store at -18°C or below.

<b>Shelf Life from Time of Production</b>	365 Days	<b>Exempt From Shelf Life Labelling</b>	No
---	----------	---	----

ACCREDITATIONS/  
CERTIFICATIONS/  
ASSURANCE  
SCHEMES



**Other Accreditation**

N/A

ORIGIN

**Product Country of Origin/Place of** United Kingdom

**Provenance**

**Additional Origin Details**

-

PRODUCT  
CHARACTERISTICS

Standards Testing

<b>Do you undertake trend analysis of microbiological results?</b>	Yes	<b>Is shelf life testing undertaken?</b>	Yes
--	-----	--	-----

Microbiological Standards

Organism	Description	Frequency	Target	Maximum	Sample (g or ml)
Enterobacteriaceae (cfu/g or ml)		Annually	<100	10000	1
Staphylococcus Aureus (cfu/g or ml)		Annually	<20	100	1
Salmonella (cfu/g or ml)	Detected/Not detected in 25g	Annually	=0	0	25

Physical Standards

Test	Description	Frequency	Target	Range	Sample (g or ml)
Weight (g)		Every Batch	>976	976 to 1276	976
Dimensions Height (mm)		Every Batch	>18	18 to 38	976

HAZARD CONTROLS

<b>Metal Detection</b>	Yes
------------------------	-----

CONFIGURATION

Case Configuration Inner Pack Configuration

<b>Total Quantity of Inner Components in</b>	1 Units
--	---------

**Outer Case**

<b>Is the Outer Case Splittable?</b>	No
--------------------------------------	----

PRODUCT  
WEIGHTS

Inner Component

<b>Variable Weight Consumer Item</b>	No
--------------------------------------	----

<b>Inner Component Weight</b>	1000 g
-------------------------------	--------

Outer Case

<b>Outer Case Gross Weight</b>	1.09 kg
--------------------------------	---------

<b>Outer Case Net Weight</b>	0.98 kg
------------------------------	---------

PRODUCT DIMENSIONS

Inner Component	
<b>Inner Component Depth</b>	308 mm
<b>Inner Component Width</b>	185 mm
<b>Inner Component Height</b>	18 mm
Outer Case	
<b>Outer Case Depth</b>	322 mm
<b>Outer Case Width</b>	203 mm
<b>Outer Case Height</b>	40 mm

PALLET INFORMATION

<b>Quantity of Cases Per Pallet Layer</b>	16 Cases	<b>Pallet Height</b>	0.95 MTR
<b>Quantity of Layers Per Pallet</b>	20 Layers	<b>Pallet Gross Weight</b>	372.8 kg
<b>Quantity of Cases Per Pallet</b>	320 Cases		

PACKAGING

Inner Component Packaging						
Type	Materials	Weight	Recycled Plastic %	Recyclable	Returnable	Composite
Tray	Plastic	3 g	- %			
Tray	Aluminium	24 g	- %			
Outer Case Packaging						
Type	Materials	Weight	Recycled Plastic %	Recyclable	Returnable	Composite
Case	Paper/Cardboard	82 g	- %			
Transport Packaging						
Type	Materials	Weight	Recycled Plastic %	Recyclable	Returnable	Composite
Other	Plastic	0.93 g	- %			
Other	Paper/Cardboard	0.93 g	- %			
Other	Wood	78.13 g	- %			

OTHER INFORMATION

<b>Intrastat/Taric Code</b>	1905311900
<b>Commodity Code</b>	19053119

**Manufacturer Comments**

Transit packaging is given per case based on a full pallet load.

CONTACT INFORMATION

Address	Technical Contact
The Handmade Cake Co.	Technical Team
The Bakery	Maidenhead.Technical@mdesserts.com
Gardner Road	
Maidenhead	P: (Phone) 01628 770908 Ext. 1052
Berkshire	
SL6 7TU	
United Kingdom	
P: (Phone) 01628 770908	

The information on the [Erudus System](#) has been supplied by the manufacturers of the products and, whilst the owners of the Erudus System take steps to ensure the information is regularly updated, they give no warranty and no guarantee that the information is accurate. Product information and ingredients may change, please always read product labels carefully in addition to using the information provided by Erudus.

We do not accept liability for any inaccuracies or incorrect information contained on this site. Please visit <http://www.erudus.com/terms-and-conditions> for full terms and conditions.