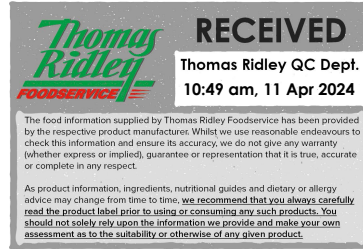


Changed Apr 10, 2024 14:20

Reviewed Apr 10, 2024 14:20

Erudus ID 981e3fc4bb6b48728aa868dd8b908caa

Version 2.0



64023

KTC Rapeseed Oil 6 x 1L PET

Ktc Rapeseed Oil 6 X 1l Pet 6x1litre

PRODUCT DESCRIPTION

Clear liquid oil suitable for culinary purposes. Produced from Non - GM rape seeds.

Brand	KTC (Edibles) Ltd
Manufacturer Product Code	1082
Product Type	Food
Product Category	Oil and Vinegars
Storage Type	Ambient
Erudus ID	981e3fc4bb6b48728aa868dd8b908caa
Specification Type	Generic
Inner Component GTIN	5013635116614
Outer Case GTIN	05013635116621



INGREDIENTS

Ingredient Declaration

Rapeseed Oil, Antifoaming Agent E900

ALLERGENS

Product Contains:

Celery/Celeriac	No	Mustard	No
Cereals Containing Gluten	No	Nuts (Tree)	No
Barley	No	Almond nuts	No
Oats	No	Brazil nuts	No
Rye	No	Cashew nuts	No
Wheat (including Spelt and Khorasan)	No	Hazelnuts	No
Crustacea	No	Macadamia (Queensland) nuts	No
Eggs	No	Pecan nuts	No
Fish	No	Pistachio nuts	No
Lupin	No	Walnuts	No
Milk	No	Peanuts	No
Molluscs	No	Sesame Seeds	No
		Soybeans	No
		Sulphur Dioxide and Sulphites	No

SUPPLEMENTARY INGREDIENT INFORMATION

Palm Oil	No
Hydrogenated Vegetable Oil/Fat	No
GM Protein/DNA	No

ADDITIVES

Product Contains:

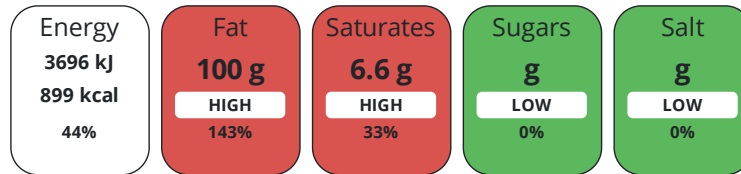
Artificial Antioxidants	No	Artificial Flavourings	No
Artificial Colours	No	Artificial Preservatives	No
Artificial Flavour Enhancers	No	Artificial Sweeteners	No

DIET
SUITABILITY

Vegan Diet	Suitable for	Vegetarian Diet	Suitable for
Halal Diet	Suitable for	Kosher Diet	Suitable for

NUTRITIONAL
INFORMATION

Each 100g/ml portion contains:



of your reference intake.

Typical values per 100g/ml : Energy 899kcal / 3696kJ

Nutrient	per 100g	RI per 100g
Energy (kJ)	3696 kJ	44%
Energy (kcal)	899 kcal	45%
Fat	100 g	143%
of which Saturates	6.6 g	33%
of which Mono-unsaturates	57 g	
of which Polyunsaturates	32 g	
Carbohydrate	0 g	0%
of which Sugars	0 g	0%
Fibre	0 g	
Protein	0 g	0%
Salt	0 g	0%

SUPPLEMENTARY
NUTRITIONAL
INFORMATION

HANDLING &
STORAGE
INFORMATION

Directions For Use

N/A

Storage Instructions

Store at ambient temperatures, off the floor in a clean dry area. Keep away from strongly odorous materials and direct sunlight.

Shelf Life from Time of Production	540 Days	Exempt From Shelf Life Labelling	No
---	----------	---	----

BRCGS Certified	Other Accreditation
------------------------	----------------------------

ACCREDITATIONS/
CERTIFICATIONS/
ASSURANCE
SCHEMES
ORIGIN

Product Country of Origin/Place of United Kingdom

Provenance

Additional Origin Details

On very rare occasions the seeds may come from: France, Germany, Hungary, Bulgaria, Romania, Slovakia, Serbia, Poland, Czech Republic, Belgium, Latvia, Lithuania, Austria, Australia, Denmark and Uruguay.

PRODUCT
CHARACTERISTICS

Standards Testing

Do you undertake trend analysis of microbiological results?	No	Is shelf life testing undertaken?	No
--	----	--	----

Analytical Standards

Test	Description	Frequency	Target	Range	Sample (g or ml)
Acidity (%)		Every Batch	<0.1	0 to 0.1	100

Test	Description	Frequency	Target	Range	Sample (g or ml)
Moisture (%)		Every Batch	<0.1	0 to 0.1	100
Peroxide Value (PV)		Every Batch	<1	0 to 1	100

CONFIGURATION

Case Configuration Inner Pack Configuration

Total Quantity of Inner Components in Outer Case 6 Units

Is the Outer Case Splittable? Yes

PRODUCT WEIGHTS

Inner Component

Variable Weight Consumer Item No

Inner Component Volume 1 litre

Outer Case

Outer Case Gross Weight 5.8 kg

Outer Case Net Weight 5.5 kg

PRODUCT DIMENSIONS

Inner Component

Inner Component Depth 73 mm

Inner Component Width 73 mm

Inner Component Height 258 mm

Outer Case

Outer Case Depth 225 mm

Outer Case Width 152 mm

Outer Case Height 260 mm

PALLET INFORMATION

Quantity of Cases Per Pallet Layer 30 Cases **Pallet Height** 1.5 MTR

Quantity of Layers Per Pallet 5 Layers **Pallet Gross Weight** 1.35 kg

Quantity of Cases Per Pallet 150 Cases

PACKAGING

Inner Component Packaging

Type	Materials	Weight	Recycled Plastic %	Recyclable	Returnable	Composite
Bottle	Plastic	27.6 g	- %			
Bottle	Paper/Cardboard	1.5 g	- %			

Outer Case Packaging

Type	Materials	Weight	Recycled Plastic %	Recyclable	Returnable	Composite
Case	Paper/Cardboard	130 g	- %			

Transport Packaging

Type	Materials	Weight	Recycled Plastic %	Recyclable	Returnable	Composite
Other	Plastic	300 g	- %		Yes	
Other	Wood	22000 g	- %		Yes	

OTHER INFORMATION

Manufacturer Comments

N/A

CONTACT
INFORMATION

Address

KTC (Edibles) Ltd
Moorcroft Drive
Moorcroft Park
Wednesbury
West Midlands
WS10 7DE
United Kingdom

P: (Phone) +44 (0) 121 505 9200

Complaints Contact

Technical Team
Technical Team
technical@ktc-edibles.co.uk

P: (Phone) 01215059217

Technical Contact

Aleksandra Rybicka
Food Safety Compliance Manager
a.rybicka@ktc-edibles.co.uk

P: (Phone) 01215059217

Commercial Contact

Donna King
Sales Admin Manager
donna@ktc-edibles.co.uk

P: (Phone) 01215059248

The information on the [Erudus System](#) has been supplied by the manufacturers of the products and, whilst the owners of the Erudus System take steps to ensure the information is regularly updated, they give no warranty and no guarantee that the information is accurate. Product information and ingredients may change, please always read product labels carefully in addition to using the information provided by Erudus.

We do not accept liability for any inaccuracies or incorrect information contained on this site.
Please visit <http://www.erudus.com/terms-and-conditions> for full terms and conditions.