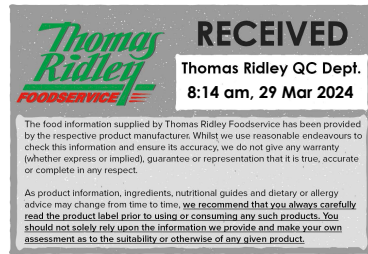


Changed Mar 28, 2024 15:35

Reviewed Mar 28, 2024 15:35

Erudus ID eed307b69c6a401f9a226a4eb2e9fb91

Version 2.0



Thomas Ridley
FOODSERVICE

RECEIVED
Thomas Ridley QC Dept.
8:14 am, 29 Mar 2024

The food information supplied by Thomas Ridley Foodservice has been provided by the respective product manufacturers. Whilst we use reasonable endeavours to check this information and ensure its accuracy, we do not give any warranty (whether express or implied), guarantee or representation that it is true, accurate or complete in any respect.

As product information, ingredients, nutritional guides and dietary or allergy advice may change from time to time, we recommend that you always carefully read the product label prior to using or consuming any such products. You should not solely rely upon the information we provide and make your own assessment as to the suitability or otherwise of any given product.



64029

Coca-Cola Zero Sugar 330ml x24

Coca-cola Zero Sugar 24x0.34kg

PRODUCT DESCRIPTION

Coca-Cola Zero Sugar 330ml x24 Can

Brand	Coca-Cola
Manufacturer Product Code	408614
Product Type	Drink
Product Category	Drinks - General
Storage Type	Ambient
Erudus ID	eed307b69c6a401f9a226a4eb2e9fb91
Specification Type	Drinks



Inner Component GTIN	5449000131805
Outer Case GTIN	5017726175665



INGREDIENTS

Ingredient Declaration

Ingredients: Carbonated Water, Colour (E150d), Acid (Phosphoric Acid), Sweeteners (Aspartame, Acesulfame-K, Enzymatically Produced Steviol Glycosides), Natural Flavourings, Caffeine Flavouring, Acidity Regulator (Sodium Citrates).

ALLERGENS

Product Contains:

Celery/Celeriac	No	Mustard	No
Cereals Containing Gluten	No	Nuts (Tree)	No
Barley	No	Almond nuts	No
Oats	No	Brazil nuts	No
Rye	No	Cashew nuts	No
Wheat (including Spelt and Khorasan)	No	Hazelnuts	No
Crustacea	No	Macadamia (Queensland) nuts	No
Eggs	No	Pecan nuts	No
Fish	No	Pistachio nuts	No
Lupin	No	Walnuts	No
Milk	No	Peanuts	No
Molluscs	No	Sesame Seeds	No
		Soybeans	No
		Sulphur Dioxide and Sulphites	No

SUPPLEMENTARY INGREDIENT INFORMATION

Palm Oil	No
Hydrogenated Vegetable Oil/Fat	No
GM Protein/DNA	No

ADDITIVES

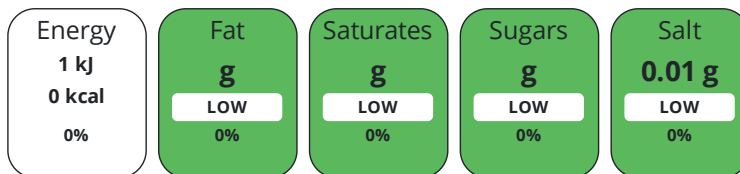
Product Contains:

Artificial Antioxidants	No	Artificial Flavourings	No
Artificial Colours	Yes	Artificial Preservatives	Yes
Artificial Flavour Enhancers	No	Artificial Sweeteners	Yes
Vegan Diet	Suitable for	Vegetarian Diet	Suitable for
Halal Diet	Suitable for	Kosher Diet	Suitable for

DIET
SUITABILITY

NUTRITIONAL
INFORMATION

Each 100g/ml portion contains:



of your reference intake.

Typical values per 100g/ml : Energy 0kcal / 1kJ

Nutrient	per 100ml	RI per 100ml
Energy (kJ)	1.3 kJ	0%
Energy (kcal)	0.3 kcal	0%
Fat	0 g	0%
of which Saturates	0 g	0%
Carbohydrate	0 g	0%
of which Sugars	0 g	0%
Protein	0 g	0%
Salt	0.01 g	0%

SUPPLEMENTARY
NUTRITIONAL
INFORMATION

HFSS (HIGH IN
FAT, SALT AND
SUGAR)

HFSS Status	No
HFSS Score	0

HANDLING &
STORAGE
INFORMATION

Directions For Use

Best served chilled.

Storage Instructions

Store in a cool dry place.

Shelf Life from Time of Production	180 Days	Exempt From Shelf Life Labelling	No
-------------------------------------------	----------	-----------------------------------------	----

ORIGIN

Product Country of Origin/Place of Provenance	Great Britain
------------------------------------------------------	---------------

PRODUCT
CHARACTERISTICS
CONFIGURATION

Standards Testing	
Case Configuration	Inner Pack Configuration
Total Quantity of Inner Components in Outer Case	24 Units
Is the Outer Case Splittable?	No

PRODUCT WEIGHTS

Inner Component	
Inner Component Weight	0.34 kg
Outer Case	
Outer Case Gross Weight	8.27 kg
Outer Case Net Weight	7.9 kg

PRODUCT DIMENSIONS

Inner Component	
Inner Component Depth	66 mm
Inner Component Width	116 mm
Inner Component Height	66 mm
Outer Case	
Outer Case Depth	404 mm
Outer Case Width	271 mm
Outer Case Height	118 mm

PALLET INFORMATION

Quantity of Cases Per Pallet Layer	10 Cases	Pallet Height	1.58 MTR
Quantity of Layers Per Pallet	12 Layers	Pallet Gross Weight	1022.31 kg
Quantity of Cases Per Pallet	120 Cases		

PACKAGING

Inner Component Packaging						
Type	Materials	Weight	Recycled Plastic %	Recyclable	Returnable	Composite
Can	Aluminium	9.8 g	- %			
Outer Case Packaging						
Type	Materials	Weight	Recycled Plastic %	Recyclable	Returnable	Composite
Case	Plastic	16.65 g	- %			
Case	Paper/Cardboard	58.35 g	- %			

OTHER INFORMATION CONTACT INFORMATION

Address	Technical Contact
Coca-Cola	Data Queries
Coca-Cola Europacific Partners Great Britain Limited	npidataexchange@ccep.com
Pemberton House, Bakers Road	
Uxbridge	
UB8 1EZ	
United Kingdom	
P. (Phone) 08081000000	

The information on the [Erudus System](#) has been supplied by the manufacturers of the products and, whilst the owners of the Erudus System take steps to ensure the information is regularly updated, they give no warranty and no guarantee that the information is accurate. Product information and ingredients may change, please always read product labels carefully in addition to using the information provided by Erudus.

We do not accept liability for any inaccuracies or incorrect information contained on this site. Please visit <http://www.erudus.com/terms-and-conditions> for full terms and conditions.