

Changed Jun 27, 2024 22:29

Reviewed Jun 27, 2024 22:29

Erudus ID d2f26ee934d94d24bc1bccd519394bbe

Version 2.0

64207


NESCAFE GOLD BLEND 360g (200x1.8g)

Nescafe Gold Blend 360g (200x1.8g) 200x


PRODUCT DESCRIPTION

Freeze-Dried Soluble Coffee with finely ground roasted coffee.

Brand	Nestle UK
Manufacturer Product Code	12340523
Product Type	Drink
Product Category	Tea & Coffee
Storage Type	Ambient
Erudus ID	d2f26ee934d94d24bc1bccd519394bbe
Specification Type	Drinks



RECEIVED
Thomas Ridley QC Dept.
12:55 pm, 28 Jun 2024



The food information supplied by Thomas Ridley Foodservice has been provided by the respective product manufacturer. Whilst we use reasonable endeavours to check this information and ensure its accuracy, we do not give any warranty (whether express or implied), guarantee or representation that it is true, accurate or complete in any respect.

As product information, ingredients, nutritional guides and dietary or allergy advice may change from time to time, we recommend that you always carefully read the product label prior to using or consuming any such products. You should not solely rely upon the information we provide and make your own assessment as to the suitability or otherwise of any given product.



Inner Component GTIN	7613033694165
Outer Case GTIN	07613033694165



INGREDIENTS

Ingredient Declaration

Soluble coffee, Roast and ground coffee (3%).

ALLERGENS

Product Contains:

Celery/Celериac	No	Mustard	No
Cereals Containing Gluten	No	Nuts (Tree)	No
Barley	No	Almond nuts	No
Oats	No	Brazil nuts	No
Rye	No	Cashew nuts	No
Wheat (including Spelt and Khorasan)	No	Hazelnuts	No
Crustacea	No	Macadamia (Queensland) nuts	No
Eggs	No	Pecan nuts	No
Fish	No	Pistachio nuts	No
Lupin	No	Walnuts	No
Milk	No	Peanuts	No
Molluscs	No	Sesame Seeds	No
		Soybeans	No
		Sulphur Dioxide and Sulphites	No
Supplementary Ingredient Information			
Palm Oil	No		
Hydrogenated Vegetable Oil/Fat	No		
GM Protein/DNA	No		

ADDITIVES

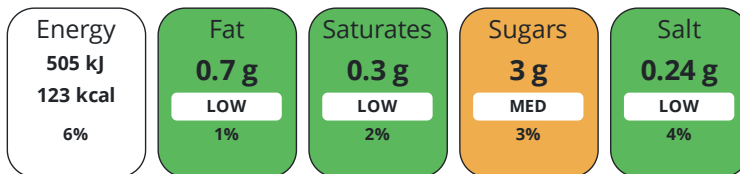
Product Contains:

Artificial Antioxidants	No	Artificial Flavourings	No
Artificial Colours	No	Artificial Preservatives	No
Artificial Flavour Enhancers	No	Artificial Sweeteners	No
Vegan Diet	Suitable for	Vegetarian Diet	Suitable for
Halal Diet	Certified	Kosher Diet	Certified

DIET SUITABILITY

NUTRITIONAL INFORMATION

Each 100g/ml portion contains:



of your reference intake.

Typical values per 100g/ml : Energy 123kcal / 505kj

Nutrient	per 100g	RI per 100g	per 1.8g serving	RI per 1.8g serving
Energy (kJ)	505 kJ	6%	9.1 kJ	0%
Energy (kcal)	123 kcal	6%	2.2 kcal	0%
Fat	0.7 g	1%	-	
of which Saturates	0.3 g	2%	-	
Carbohydrate	3 g	1%	0.1 g	0%
of which Sugars	3 g	3%	0.1 g	0%
Fibre	34.2 g		0.6 g	
Protein	8 g	16%	0.1 g	0%
Salt	0.24 g	4%	-	
Serving Size	1.8 g			

SUPPLEMENTARY NUTRITIONAL INFORMATION

HFSS (HIGH IN FAT, SALT AND SUGAR) HANDLING & STORAGE INFORMATION

HFSS Status	No
Directions For Use	For the Perfect Serve: Always use a dry measure and freshly boiled water (not boiling hot) 1 stickpack per mug
Storage Instructions	Store in a cool,dry place.
Shelf Life from Time of Production	540 Days

ACCREDITATIONS/ CERTIFICATIONS/ ASSURANCE SCHEMES ORIGIN

FSSC 22000	
Product Country of Origin/Place of Provenance	United Kingdom

PRODUCT CHARACTERISTICS

Standards Testing	
Do you undertake trend analysis of microbiological results?	No
Is shelf life testing undertaken?	No

CONFIGURATION	Case Configuration	Inner Pack Configuration					
CONFIGURATION	Total Quantity of Inner Components in Outer Case	200 Units					
	Is the Outer Case Splittable?	No					
	Inner Component						
PRODUCT WEIGHTS	Outer Case						
	Outer Case Gross Weight	580 kg					
	Outer Case Net Weight	360 kg					
	Inner Component						
PRODUCT DIMENSIONS	Inner Component Depth	142 mm					
	Inner Component Width	250 mm					
	Inner Component Height	144 mm					
	Outer Case						
	Outer Case Depth	142 mm					
	Outer Case Width	250 mm					
PALLET INFORMATION	Outer Case Height	144 mm					
	Quantity of Cases Per Pallet Layer	28 Cases	Pallet Height	1.4 MTR			
	Quantity of Layers Per Pallet	8 Layers	Pallet Gross Weight	160 kg			
	Quantity of Cases Per Pallet	224 Cases					
PACKAGING	Inner Component Packaging						
	Type	Materials	Weight	Recycled Plastic %	Recyclable	Returnable	Composite
	Sachet	Plastic	104 g	- %			
	Sachet	Paper/Cardboard	115 g	- %			
OTHER INFORMATION	Manufacturer Comments						
		Please see inner product packaging waste details for waste packaging/materials. Due to the format of this product there is no secondary packaging.					
CONTACT INFORMATION	Address						
		Nestle UK Nestlé UK Ltd PO Box 207 York YO91 1WS England					
		P: (Phone) 0800 00 00 30 (UK)					
		Complaints Contact consumer.services@uk.nestle.com					
		P: (Phone) 0800 00 00 30 (UK)					

The information on the [Erudus System](#) has been supplied by the manufacturers of the products and, whilst the owners of the Erudus System take steps to ensure the information is regularly updated, they give no warranty and no guarantee that the information is accurate. Product information and ingredients may change, please always read product labels carefully in addition to using the information provided by Erudus.

We do not accept liability for any inaccuracies or incorrect information contained on this site.
Please visit <http://www.erudus.com/terms-and-conditions> for full terms and conditions.