

**Changed** May 10, 2024 00:00  
**Reviewed** May 09, 2024 11:32  
**Erudus ID** 9aeba33aa2b44b5981066daf992a2f06  
**Version** 2.0

Thomas Ridley QC Dept.  
3:16 pm, 10 May 2024

The food information supplied by Thomas Ridley Foodservice has been provided by the respective product manufacturer. Whilst we use reasonable endeavours to check this information and ensure its accuracy, we do not give any warranty (whether express or implied), guarantee or representation that it is true, accurate or complete in any respect.

As product information, ingredients, nutritional guides and dietary or allergy advice may change from time to time, we recommend that you always carefully read the product label prior to using or consuming any such products. You should not solely rely upon the information we provide and make your own assessment as to the suitability or otherwise of any given product.



65007

# Folkington's Best of British Summer Berries 250ml

Best Of British Summer Berries 12x250ml

## PRODUCT DESCRIPTION

Folkington's Best of British Berries is made with a blend of pure fruit juices of raspberries, strawberries and blackcurrants gathered from farms around Britain. Our blend includes the Pixley Black variety, which is grown exclusively in Herefordshire.

<b>Brand</b>	Folkington's / Metro Drinks
<b>Manufacturer Product Code</b>	FO025SB
<b>Manufacturer Version Number</b>	2024 Spec Sheet Update - May 9th
<b>Effective Date</b>	May 9, 2024
<b>Product Type</b>	Drink
<b>Product Category</b>	Juices and Cordials
<b>Storage Type</b>	Ambient
<b>Erudus ID</b>	9aeba33aa2b44b5981066daf992a2f06
<b>Specification Type</b>	Drinks



<b>Inner Component GTIN</b>	5060042981236
<b>Outer Case GTIN</b>	5060042981243



## INGREDIENTS

### Ingredient Declaration

Water, pure fruit juices 15.6%, NFC (raspberry 6.5%, Strawberry 5.8%, blackcurrant 3.3%) grape and apple syrup

## ALLERGENS

Product Contains:

<b>Celery/Celeriac</b>	No
<b>Cereals Containing Gluten</b>	No
<b>Barley</b>	No
<b>Oats</b>	No
<b>Rye</b>	No
<b>Wheat (including Spelt and Khorasan)</b>	No
<b>Crustacea</b>	No
<b>Eggs</b>	No
<b>Fish</b>	No
<b>Lupin</b>	No
<b>Milk</b>	No
<b>Molluscs</b>	No
<b>Mustard</b>	No
<b>Nuts (Tree)</b>	No
<b>Almond nuts</b>	No
<b>Brazil nuts</b>	No
<b>Cashew nuts</b>	No
<b>Hazelnuts</b>	No
<b>Macadamia (Queensland) nuts</b>	No
<b>Pecan nuts</b>	No
<b>Pistachio nuts</b>	No
<b>Walnuts</b>	No
<b>Peanuts</b>	No
<b>Sesame Seeds</b>	No
<b>Soybeans</b>	No
<b>Sulphur Dioxide and Sulphites</b>	No

**Additional Allergen Information**

No Allergens

SUPPLEMENTARY INGREDIENT INFORMATION

<b>Palm Oil</b>	No
<b>Hydrogenated Vegetable Oil/Fat</b>	No
<b>GM Protein/DNA</b>	No

ADDITIVES

Product Contains:

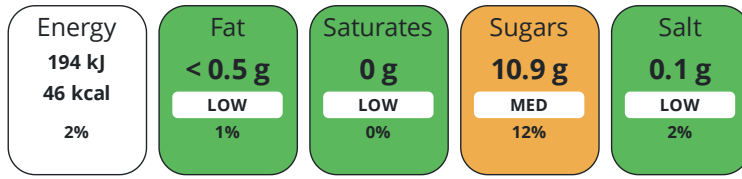
<b>Artificial Antioxidants</b>	No
<b>Artificial Colours</b>	No
<b>Artificial Flavour Enhancers</b>	No
<b>Artificial Flavourings</b>	No
<b>Artificial Preservatives</b>	No
<b>Artificial Sweeteners</b>	No

DIET SUITABILITY

<b>Vegan Diet</b>	Suitable for	<b>Vegetarian Diet</b>	Suitable for
<b>Halal Diet</b>	No	<b>Kosher Diet</b>	No

NUTRITIONAL INFORMATION

Each 100g/ml portion contains:



of your reference intake.

Typical values per 100g/ml : Energy 46kcal / 194kj

Nutrient	per 100ml	RI per 100ml	per 100ml serving	RI per 100ml serving
Energy (kJ)	194 kJ	2%	194 kJ	2%
Energy (kcal)	46 kcal	2%	46 kcal	2%
Fat	< 0.5 g	1%	0.5 g	1%
of which Saturates	0 g	0%	-	-
Carbohydrate	11.2 g	4%	11.2 g	4%
of which Sugars	10.9 g	12%	10.9 g	12%
Protein	< 0.5 g	1%	0.5 g	1%
Salt	0.1 g	2%	0.1 g	2%
Sodium	0.1 mg		0.1 mg	
Serving Size			100 ml	

#### SUPPLEMENTARY NUTRITIONAL INFORMATION

#### HANDLING & STORAGE INFORMATION

##### Directions For Use

Do not consume if safety button on cap does not pop up on first opening. Shake well: once opened, keep refrigerated below 5 deg C and consume within 2 days

##### Storage Instructions

Store at room temperature and away from direct sunlight

##### Storage Instructions After Opening

Shake well: once opened, keep refrigerated below 5 deg C and consume within 2 days

##### Shelf Life from Time of Production

728 Days

##### Shelf Life From Opening

2 Days

##### Exempt From Shelf Life Labelling

No

#### ACCREDITATIONS/ CERTIFICATIONS/ ASSURANCE SCHEMES

##### BRCGS Certified

##### Other Accreditation

#### ORIGIN

##### Product Country of Origin/Place of

United Kingdom

##### Provenance

#### PRODUCT CHARACTERISTICS

##### Standards Testing

#### CONFIGURATION

##### Case Configuration

##### Total Quantity of Inner Components in Outer Case

12 Units

##### Inner Pack Configuration

PRODUCT WEIGHTS

Inner Component

<b>Inner Component Volume</b>	250 ml
Outer Case	
<b>Outer Case Gross Weight</b>	4.98 kg
<b>Outer Case Net Weight</b>	3.1 kg

PRODUCT DIMENSIONS

Inner Component

<b>Inner Component Depth</b>	55 mm
<b>Inner Component Width</b>	55 mm
<b>Inner Component Height</b>	155 mm

Outer Case

<b>Outer Case Depth</b>	240 mm
<b>Outer Case Width</b>	185 mm
<b>Outer Case Height</b>	160 mm

PALLET INFORMATION

<b>Quantity of Cases Per Pallet Layer</b>	26 Cases
<b>Quantity of Layers Per Pallet</b>	8 Layers
<b>Quantity of Cases Per Pallet</b>	208 Cases
<b>Pallet Height</b>	1.5 MTR
<b>Pallet Gross Weight</b>	1075 kg

PACKAGING

Inner Component Packaging

Type	Materials	Weight	Recycled Plastic %	Recyclable	Returnable	Composite
Sleeve	Plastic / PET (Polyethylene Terephthalate)	1.6 g	30 %	Yes	No	
Bottle	Glass	142 g	- %	Yes	No	
Lid	Steel	5 g	- %	Yes	No	

Outer Case Packaging

Type	Materials	Weight	Recycled Plastic %	Recyclable	Returnable	Composite
Shrink Wrap	Plastic / LDPE (Low Density Polyethylene)	48.2 g	30 %	Yes	No	
Case	Paper/Cardboard	28.1 g	- %	Yes	No	

Transport Packaging

Type	Materials	Weight	Recycled Plastic %	Recyclable	Returnable	Composite
Pallet Wrap	Plastic / LDPE (Low Density Polyethylene)	250 g	30 %	Yes	No	
Pallet	Wood	20000 g	- %	Yes	No	

MARKETING INFORMATION

**Marketing Description**

Folkington's Best of British Berries is made with a blend of pure fruit juices of raspberries, strawberries and blackcurrants gathered from farms around Britain. Our blend includes the Pixley Black variety, which is grown exclusively in Herefordshire.

OTHER INFORMATION

<b>Intrastat/Taric Code</b>	22029010
<b>Commodity Code</b>	20099079
<b>Value Added Tax Rate</b>	20%

**Manufacturer Comments**

N/A

CONTACT INFORMATION

Address

Folkington's / Metro Drinks

The Workshop

Endlewick House

Arlington

BN26 6RU

England

P: (Phone) 01323 485602

The information on the [Erudus System](#) has been supplied by the manufacturers of the products and, whilst the owners of the Erudus System take steps to ensure the information is regularly updated, they give no warranty and no guarantee that the information is accurate. Product information and ingredients may change, please always read product labels carefully in addition to using the information provided by Erudus.

We do not accept liability for any inaccuracies or incorrect information contained on this site.

Please visit <http://www.erudus.com/terms-and-conditions> for full terms and conditions.