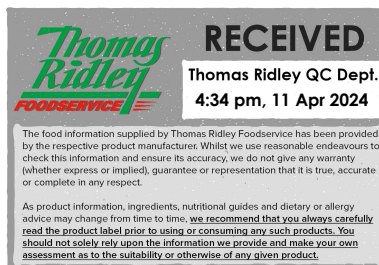


Changed Apr 11, 2024 10:54

Reviewed Apr 11, 2024 10:54

Erudus ID cf370b24716e43239772afa66b52abfc

Version 2.0



65017

# Pink & White Mini Mallows (Pork Gelatine) 4x1kg

Pink & White Mini Mallows (pork Gelatine) 4x1kg

## PRODUCT DESCRIPTION

MP OVF0539/VST0475 11mm ADDITIONS PINK & White Mallows [Porcini] 4 x 1kg

|                           |                                  |
|---------------------------|----------------------------------|
| Brand                     | Orchard Valley Foods Ltd         |
| Manufacturer Product Code | MALL11mmPKWHTPRK                 |
| Product Type              | Food                             |
| Product Category          | Confectionery                    |
| Storage Type              | Ambient                          |
| Erudus ID                 | cf370b24716e43239772afa66b52abfc |
| Specification Type        | Generic                          |
| Inner Component GTIN      | 5060292432243                    |
| Outer Case GTIN           | 5060292432250                    |

## INGREDIENTS

### Ingredient Declaration

Glucose-Fructose Syrup, Sugar, Water, Gelatine, Maize Starch, Dextrose, Vanilla Flavouring, Colour (E162)

## ALLERGENS

Product Contains:

|                                      |    |                               |    |
|--------------------------------------|----|-------------------------------|----|
| Celery/Celery                        | No | Mustard                       | No |
| Cereals Containing Gluten            | No | Nuts (Tree)                   | No |
| Barley                               | No | Almond nuts                   | No |
| Oats                                 | No | Brazil nuts                   | No |
| Rye                                  | No | Cashew nuts                   | No |
| Wheat (including Spelt and Khorasan) | No | Hazelnuts                     | No |
| Crustacea                            | No | Macadamia (Queensland) nuts   | No |
| Eggs                                 | No | Pecan nuts                    | No |
| Fish                                 | No | Pistachio nuts                | No |
| Lupin                                | No | Walnuts                       | No |
| Milk                                 | No | Peanuts                       | No |
| Molluscs                             | No | Sesame Seeds                  | No |
|                                      |    | Soybeans                      | No |
|                                      |    | Sulphur Dioxide and Sulphites | No |

## SUPPLEMENTARY INGREDIENT INFORMATION

|                                |    |
|--------------------------------|----|
| Palm Oil                       | No |
| Hydrogenated Vegetable Oil/Fat | No |
| GM Protein/DNA                 | No |

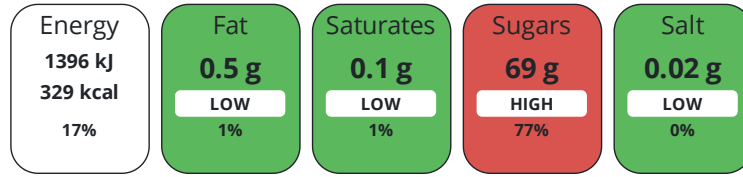
## ADDITIVES

Product Contains:

## DIET SUITABILITY

|            |    |                 |    |
|------------|----|-----------------|----|
| Vegan Diet | No | Vegetarian Diet | No |
| Halal Diet | No | Kosher Diet     | No |

Each 100g/ml portion contains:



of your reference intake.

Typical values per 100g/ml : Energy 329kcal / 1396kj

| Nutrient           | per 100g | RI per 100g | per 100g serving | RI per 100g serving |
|--------------------|----------|-------------|------------------|---------------------|
| Energy (kJ)        | 1396 kJ  | 17%         | 1396 kJ          | 17%                 |
| Energy (kcal)      | 329 kcal | 16%         | 329 kcal         | 16%                 |
| Fat                | < 0.5 g  | 1%          | 0.5 g            | 1%                  |
| of which Saturates | < 0.1 g  | 1%          | 0.1 g            | 1%                  |
| Carbohydrate       | 79 g     | 30%         | 79 g             | 30%                 |
| of which Sugars    | 69 g     | 77%         | 69 g             | 77%                 |
| Protein            | 3.2 g    | 6%          | 3.2 g            | 6%                  |
| Salt               | 0.02 g   | 0%          | -                | -                   |
| Serving Size       | 100 g    |             |                  |                     |

SUPPLEMENTARY  
NUTRITIONAL  
INFORMATION

HANDLING &  
STORAGE  
INFORMATION

**Directions For Use**

Ready to eat

**Storage Instructions**

Maximum temperature 25°C, cool and dry

|   |          |   |    |
|---|----------|---|----|
| <b>Shelf Life from Time of Production</b> | 450 Days | <b>Exempt From Shelf Life Labelling</b> | No |
|---|----------|---|----|

**BRCGS Certified**

ACCREDITATIONS/  
CERTIFICATIONS/  
ASSURANCE  
SCHEMES  
ORIGIN

**Product Country of Origin/Place of** Belgium

**Provenance**

Standards Testing

PRODUCT  
CHARACTERISTICS

|  |    |  |    |
|--|----|--|----|
| <b>Do you undertake trend analysis of microbiological results?</b> | No | <b>Is shelf life testing undertaken?</b> | No |
|--|----|--|----|

Microbiological Standards

| Organism                               | Description                             | Frequency | Target | Maximum | Sample (g or ml) |
|--|---|-----------|--------|---------|------------------|
| E. Coli (cfu/g or ml)                  | Tests results supplied by manufacturer. | Annually  | <10    | 10      | 1                |
| Staphylococcus Aureus (cfu/g or ml)    | Tests results supplied by manufacturer. | Annually  | <10    | 100     | 1                |
| Total Viable Count (TVC) (cfu/g or ml) | Tests results supplied by manufacturer. | Annually  | <1000  | 100000  | 1                |
| Yeast (cfu/g or ml)                    | Tests results supplied by manufacturer. | Annually  | <100   | 1000    | 1                |
| Moulds (cfu/g or ml)                   | Tests results supplied by manufacturer. | Annually  | <100   | 1000    | 1                |
| Salmonella (cfu/g or ml)               | Tests results supplied by manufacturer. | Annually  | <0     | 0       | 25               |

|                         |   |                            |                          |                           |                   |                   |                  |
|-------------------------|---|----------------------------|--------------------------|---------------------------|-------------------|-------------------|------------------|
| CONFIGURATION           | Case Configuration                                      |                            | Inner Pack Configuration |                           |                   |                   |                  |
|                         | <b>Total Quantity of Inner Components in Outer Case</b> | 4 Units                    |                          |                           |                   |                   |                  |
|                         | <b>Is the Outer Case Splittable?</b>                    | No                         |                          |                           |                   |                   |                  |
| PRODUCT WEIGHTS         | Inner Component   |                            |                          |                           |                   |                   |                  |
|                         | <b>Variable Weight Consumer Item</b>                    | Yes                        |                          |                           |                   |                   |                  |
|                         | Outer Case  |                            |                          |                           |                   |                   |                  |
|                         | <b>Outer Case Gross Weight</b>                          | 4.5 kg                     |                          |                           |                   |                   |                  |
| PRODUCT DIMENSIONS      | Outer Case  |                            |                          |                           |                   |                   |                  |
|                         | <b>Outer Case Net Weight</b>                            | 4 kg                       |                          |                           |                   |                   |                  |
|                         | Inner Component   |                            |                          |                           |                   |                   |                  |
|                         | <b>Inner Component Depth</b>                            | 390 mm                     |                          |                           |                   |                   |                  |
|                         | <b>Inner Component Width</b>                            | 600 mm                     |                          |                           |                   |                   |                  |
|                         | <b>Inner Component Height</b>                           | 120 mm                     |                          |                           |                   |                   |                  |
|                         | Outer Case  |                            |                          |                           |                   |                   |                  |
|                         | <b>Outer Case Depth</b>                                 | 390 mm                     |                          |                           |                   |                   |                  |
| PALLET INFORMATION      | <b>Outer Case Width</b>                                 | 600 mm                     |                          |                           |                   |                   |                  |
|                         | <b>Outer Case Height</b>                                | 120 mm                     |                          |                           |                   |                   |                  |
|                         | <b>Quantity of Cases Per Pallet Layer</b>               | 5 Cases                    | <b>Pallet Height</b>     | 1.6 MTR                   |                   |                   |                  |
|                         | <b>Quantity of Layers Per Pallet</b>                    | 9 Layers                   |                          |                           |                   |                   |                  |
| PACKAGING               | <b>Quantity of Cases Per Pallet</b>                     | 45 Cases                   |                          |                           |                   |                   |                  |
|                         | Inner Component Packaging                               |                            |                          |                           |                   |                   |                  |
|                         | <b>Type</b>   | <b>Materials</b>           | <b>Weight</b>            | <b>Recycled Plastic %</b> | <b>Recyclable</b> | <b>Returnable</b> | <b>Composite</b> |
|                         | Bag   | Plastic                    | 12.9 g                   | - %                       |                   |                   |                  |
|                         | Outer Case Packaging                                    |                            |                          |                           |                   |                   |                  |
|                         | <b>Type</b>   | <b>Materials</b>           | <b>Weight</b>            | <b>Recycled Plastic %</b> | <b>Recyclable</b> | <b>Returnable</b> | <b>Composite</b> |
|                         | Case  | Paper/Cardboard            | 500 g                    | - %                       |                   |                   |                  |
|                         | OTHER INFORMATION CONTACT INFORMATION                   | Address                    |                          | Technical Contact         |                   |                   |                  |
|                         |   | Orchard Valley Foods Ltd   |                          | Technical                 |                   |                   |                  |
|                         |   | 4 Lower Teme Business Park |                          | Technical Team            |                   |                   |                  |
| Burford                 |   | qa@orchard-valley.co.uk    |                          |                           |                   |                   |                  |
| Tenbury Wells           |   |                            |                          |                           |                   |                   |                  |
| Worcestershire          |   |                            |                          |                           |                   |                   |                  |
| WR15 8SZ                |   |                            |                          |                           |                   |                   |                  |
| England                 |   |                            |                          |                           |                   |                   |                  |
| P. (Phone) 01584 811137 |   |                            |                          |                           |                   |                   |                  |

The information on the [Erudus System](#) has been supplied by the manufacturers of the products and, whilst the owners of the Erudus System take steps to ensure the information is regularly updated, they give no warranty and no guarantee that the information is accurate. Product information and ingredients may change, please always read product labels carefully in addition to using the information provided by Erudus.

We do not accept liability for any inaccuracies or incorrect information contained on this site.  
Please visit <http://www.erudus.com/terms-and-conditions> for full terms and conditions.