

Changed Jun 27, 2024 22:23

Reviewed Jun 27, 2024 22:23

Erudus ID f5749626ad3b46c8a5972c4bbcb3a5dc

Version 2.0

65037

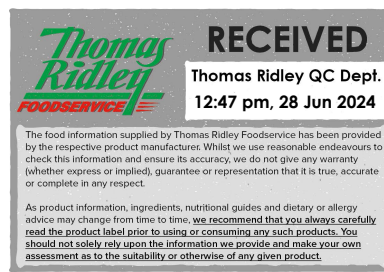
NESCAFE ORIGINAL 360g (200x1.8g)

Nescafe Original Stickpacks 1.8g 200x360g

PRODUCT DESCRIPTION

Soluble Coffee

Brand	Nestle UK
Manufacturer Product Code	12533589
Product Type	Drink
Product Category	Tea & Coffee
Storage Type	Ambient
Erudus ID	f5749626ad3b46c8a5972c4bbcb3a5dc
Specification Type	Drinks



Inner Component GTIN	7613033694134
Outer Case GTIN	07613033694134



INGREDIENTS

Ingredient Declaration

Soluble Coffee

ALLERGENS

Product Contains:

Celery/Celериac	No	Mustard	No
Cereals Containing Gluten	No	Nuts (Tree)	No
Barley	No	Almond nuts	No
Oats	No	Brazil nuts	No
Rye	No	Cashew nuts	No
Wheat (including Spelt and Khorasan)	No	Hazelnuts	No
Crustacea	No	Macadamia (Queensland) nuts	No
Eggs	No	Pecan nuts	No
Fish	No	Pistachio nuts	No
Lupin	No	Walnuts	No
Milk	No	Peanuts	No
Molluscs	No	Sesame Seeds	No
		Soybeans	No
		Sulphur Dioxide and Sulphites	No
Supplementary Ingredient Information			
Palm Oil	No		
Hydrogenated Vegetable Oil/Fat	No		
GM Protein/DNA	No		

ADDITIVES

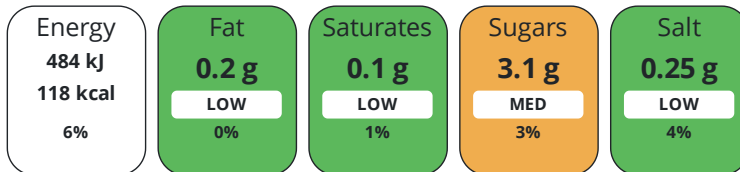
Product Contains:

Artificial Antioxidants	No	Artificial Flavourings	No
Artificial Colours	No	Artificial Preservatives	No
Artificial Flavour Enhancers	No	Artificial Sweeteners	No
Vegan Diet	Suitable for	Vegetarian Diet	Suitable for
Halal Diet	Certified	Kosher Diet	Certified

DIET SUITABILITY

NUTRITIONAL INFORMATION

Each 100g/ml portion contains:



of your reference intake.

Typical values per 100g/ml : Energy 118kcal / 484kJ

Nutrient	per 100g	RI per 100g
Energy (kJ)	484 kJ	6%
Energy (kcal)	118 kcal	6%
Fat	0.2 g	0%
of which Saturates	0.1 g	1%
Carbohydrate	3.1 g	1%
of which Sugars	3.1 g	3%
Fibre	34.1 g	
Protein	7.8 g	16%
Salt	0.25 g	4%

SUPPLEMENTARY NUTRITIONAL INFORMATION

HFSS (HIGH IN FAT, SALT AND SUGAR) HANDLING & STORAGE INFORMATION

HFSS Status	No
--------------------	----

Directions For Use

For The Perfect Serve Always use freshly boiled water (not boiling hot). Add one sachet to each mug.

Storage Instructions

Store in a cool, dry place

Shelf Life from Time of Production	720 Days
---	----------

FSSC 22000	
-------------------	--

ACCREDITATIONS/ CERTIFICATIONS/ ASSURANCE SCHEMES ORIGIN

Product Country of Origin/Place of Provenance	United Kingdom
--	----------------

PRODUCT CHARACTERISTICS

Standards Testing			
Do you undertake trend analysis of microbiological results?	No	Is shelf life testing undertaken?	No

CONFIGURATION	Case Configuration		Inner Pack Configuration				
	Total Quantity of Inner Components in Outer Case	200 Units					
	Is the Outer Case Splittable?	No					
PRODUCT WEIGHTS	Inner Component						
	Inner Component Weight	360 g					
	Outer Case						
	Outer Case Gross Weight	0.58 kg					
	Outer Case Net Weight	0.36 kg					
PRODUCT DIMENSIONS	Inner Component						
	Inner Component Depth	142 mm					
	Inner Component Width	250 mm					
	Inner Component Height	144 mm					
	Outer Case						
	Outer Case Depth	142 mm					
	Outer Case Width	250 mm					
	Outer Case Height	144 mm					
PALLET INFORMATION	Quantity of Cases Per Pallet Layer	28 Cases	Pallet Height	1.3 MTR			
	Quantity of Layers Per Pallet	8 Layers	Pallet Gross Weight	160 kg			
	Quantity of Cases Per Pallet	224 Cases					
PACKAGING	Inner Component Packaging						
	Type	Materials	Weight	Recycled Plastic %	Recyclable	Returnable	Composite
	Carton	Plastic	10.47 g	- %			
	Carton	Paper/Cardboard	115 g	- %			
OTHER INFORMATION CONTACT INFORMATION	Address						
	Nestle UK						
	Contact our Professionals: Nestle Professional						
	Nestle Professional						
	Haxby Road						
	York						
YO91 1WS							
Complaints Contact							
consumer.services@uk.nestle.com							
P. (Phone) 0800 00 00 30 (UK)							

The information on the [Erudus System](#) has been supplied by the manufacturers of the products and, whilst the owners of the Erudus System take steps to ensure the information is regularly updated, they give no warranty and no guarantee that the information is accurate. Product information and ingredients may change, please always read product labels carefully in addition to using the information provided by Erudus.

We do not accept liability for any inaccuracies or incorrect information contained on this site.
Please visit <http://www.erudus.com/terms-and-conditions> for full terms and conditions.