

Changed May 15, 2024 13:04
Reviewed May 15, 2024 13:04
Erudus ID 04730fa949f946e2bbd85db1ecbb447f
Version 2.0

Thomas Ridley
FOODSERVICE

RECEIVED
Thomas Ridley QC Dept.
3:45 pm, 15 May 2024

The food information supplied by Thomas Ridley Foodservice has been provided by the respective product manufacturer. Whilst we use reasonable endeavours to check this information and ensure its accuracy, we do not give any warranty (whether express or implied), guarantee or representation that it is true, accurate or complete in any respect.

As product information, ingredients, nutritional guides and dietary or allergy advice may change from time to time, we recommend that you always carefully read the product label prior to using or consuming any such products. You should not solely rely upon the information we provide and make your own assessment as to the suitability or otherwise of any given product.



65116

Cinnamon Swirl

Cinnamon Swirl

PRODUCT DESCRIPTION

Frozen pre-proved Danish pastry swirl with a cinnamon filling, topped with glaze.

Brand	Lantmannen Unibake
Manufacturer Product Code	80513
Product Type	Food
Product Category	Pastry
Storage Type	Frozen
Erudus ID	04730fa949f946e2bbd85db1ecbb447f
Specification Type	Bakery Products



Outer Case GTIN 05701536805132



INGREDIENTS

Ingredient Declaration

DOUGH: WHEAT Flour (with Calcium, Iron, Niacin, Thiamin), Vegetable Margarine (Palm Oil, Rapeseed Oil, Water, Emulsifier (E471), Salt, Acidity Regulator (E330), Flavouring), Water, Yeast, Egg (EGG, Salt), Sugar, Improver (WHEAT Flour). FILLING: Vegetable Margarine (Palm Oil, Rapeseed Oil, Water, Coconut Oil, Salt, Emulsifier (E471), Acidity Regulator (E330), Flavouring), Sugar, Water, Custard Powder (Sugar, Modified Potato Starch, Whey Powder (MILK), Skimmed MILK Powder, Coconut Oil, Stabilisers (E404, E450iii, E339ii, E451i), Glucose Syrup, Flavouring, Colour (E160aiii), Salt, MILK Protein), Sugar Syrup, Cinnamon (0.5%), WHEAT Flour, Cane Sugar Syrup.

TOPPING: Ready Glaze (Water, Glazing Agent (E953), Sugar, Gelling Agent (E406), Acidity Regulator (E330), Preservative (E202)).

ICING: (Sugar, Water, Glucose Syrup).

ALLERGENS

Product Contains:

Celery/Celeriac	No
Cereals Containing Gluten	Yes
Barley	No
Oats	No
Rye	No
Wheat (including Spelt and Khorasan)	Yes
Crustacea	No
Eggs	Yes
Fish	No
Lupin	No
Milk	Yes
Molluscs	No
Mustard	No
Nuts (Tree)	May Contain
Almond nuts	May Contain
Brazil nuts	No
Cashew nuts	No
Hazelnuts	May Contain
Macadamia (Queensland) nuts	No
Pecan nuts	May Contain
Pistachio nuts	No
Walnuts	May Contain
Peanuts	No
Sesame Seeds	No
Soybeans	No
Sulphur Dioxide and Sulphites	No

Risk Source:

Additional Allergen Information

May contain traces of nuts.

SUPPLEMENTARY INGREDIENT INFORMATION

Palm Oil	Yes
Hydrogenated Vegetable Oil/Fat	No
GM Protein/DNA	No

ADDITIVES

Product Contains:

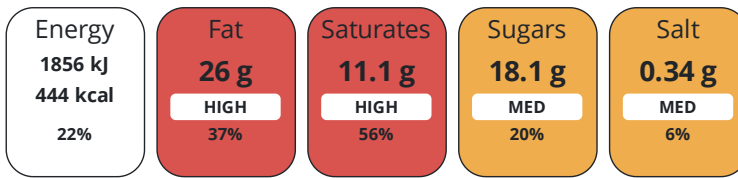
Artificial Antioxidants	No
Artificial Colours	No
Artificial Flavour Enhancers	No
Artificial Flavourings	Yes
Artificial Preservatives	Yes

DIET SUITABILITY

Vegan Diet	No	Vegetarian Diet	Suitable for
Halal Diet	Suitable for	Kosher Diet	No

NUTRITIONAL INFORMATION

Each 100g/ml portion contains:



of your reference intake.

Typical values per 100g/ml : Energy 444kcal / 1856kj

Nutrient	per 100g	RI per 100g	per 86.8g serving	RI per 86.8g serving
Energy (kJ)	1856 kJ	22%	1611 kJ	19%
Energy (kcal)	444 kcal	22%	385.4 kcal	19%
Fat	26 g	37%	22.6 g	32%
of which Saturates	11.1 g	56%	9.6 g	48%
of which Mono-unsaturates	10.02 g		8.7 g	
of which Polyunsaturates	3.65 g		3.2 g	
Carbohydrate	46.5 g	18%	40.4 g	16%
of which Sugars	18.1 g	20%	15.7 g	17%
Fibre	0.8 g		0.7 g	
Protein	5.7 g	11%	4.9 g	10%
Salt	0.34 g	6%	0.3 g	5%
Sodium	137 mg		118.9 mg	
Serving Size			86.8 g	

SUPPLEMENTARY NUTRITIONAL INFORMATION

HANDLING & STORAGE INFORMATION

Directions For Use

Bake for 18 minutes at 190°C. Eat on day of baking.

Storage Instructions

Keep frozen at -18°C or below.

Shelf Life from Time of Production

365 Days

Exempt From Shelf Life Labelling

No

ACCREDITATIONS/ CERTIFICATIONS/ ASSURANCE SCHEMES

BRCGS Certified

Roundtable of Sustainable Palm Oil (RSPO)

Other Accreditation

ORIGIN

Product Country of Origin/Place of

United Kingdom

Provenance

Additional Origin Details

N/A

PRODUCT CHARACTERISTICS

Standards Testing

Do you undertake trend analysis of microbiological results?

Yes

Is shelf life testing undertaken?

Yes

Microbiological Standards

Organism	Description	Frequency	Target	Maximum	Sample (g or ml)
Bacillus Cereus (cfu/g or ml)		Every 6 months	<10	1000	86.5
Coliforms (cfu/g or ml)		Every 6 months	<10	10	86.5
Listeria SPP (cfu/g or ml)		Every 6 months	=0	0	86.5
Staphylococcus Aureus (cfu/g or ml)		Every 6 months	<20	1000	86.5
Total Viable Count (TVC) (cfu/g or ml)		Every 6 months	<1000	10000	86.5
Salmonella (cfu/g or ml)		Every 6 months	<0	1000	86.5
Yeast (cfu/g or ml)		Every 6 months	<1000	1000	86.5
Moulds (cfu/g or ml)		Every 6 months	<1000	1000	86.5

Physical Standards

Test	Description	Frequency	Target	Range	Sample (g or ml)
Dimensions Height (mm)		Every Batch	=22.5	15 to 30	86.5
Weight (g)		Every Batch	=86.5	79.5 to 94.5	86.5

CONFIGURATION

Case Configuration

Total Quantity of Inner Components in Outer Case	48 Units
Is the Outer Case Splittable?	No
Inner Pack Configuration	
Count per Inner Component	12

PRODUCT WEIGHTS

Inner Component

Variable Weight Consumer Item	Yes
--------------------------------------	-----

Outer Case

Outer Case Gross Weight	4.77 kg
Outer Case Net Weight	4.43 kg

PRODUCT DIMENSIONS

Inner Component

Inner Component Depth	680 mm
Inner Component Width	790 mm
Inner Component Height	0 mm

Outer Case

Outer Case Depth	393 mm
Outer Case Width	293 mm
Outer Case Height	136 mm

PALLET INFORMATION

Quantity of Cases Per Pallet Layer	10 Cases
Quantity of Layers Per Pallet	11 Layers
Quantity of Cases Per Pallet	110 Cases
Pallet Height	1.66 MTR
Pallet Gross Weight	550 kg

PACKAGING

Inner Component Packaging

Type	Materials	Weight	Recycled Plastic %	Recyclable	Returnable	Composite
Bag	Plastic	18 g	- %	No		

Outer Case Packaging

Type	Materials	Weight	Recycled Plastic %	Recyclable	Returnable	Composite
Tape	Plastic	2 g	- %			
Case	Paper/Cardboard	286 g	- %			
Label	Paper/Cardboard / Paper	3 g	- %			

Transport Packaging

Type	Materials	Weight	Recycled Plastic %	Recyclable	Returnable	Composite
Pallet Wrap	Plastic	706 g	- %			
Label	Paper/Cardboard	2 g	- %			
Pallet	Wood	25000 g	- %			

OTHER INFORMATION

Manufacturer Comments

N/A

CONTACT INFORMATION

Address

Lantmannen Unibake
Maidstone Road
Kingston
Milton Keynes
MK10 0BD
England

P: (Phone) 07780837112

Technical Contact

Inesa Jegoroviene
Senior Specifications Technologist
inesa.jegoroviene@lantmannen.com

P: (Phone) 07885418956

Complaints Contact

Ursula Jaillet
Technical Coordinator
ursula.jaillet@lantmannen.com

The information on the [Erudus System](#) has been supplied by the manufacturers of the products and, whilst the owners of the Erudus System take steps to ensure the information is regularly updated, they give no warranty and no guarantee that the information is accurate. Product information and ingredients may change, please always read product labels carefully in addition to using the information provided by Erudus.

We do not accept liability for any inaccuracies or incorrect information contained on this site.
Please visit <http://www.erudus.com/terms-and-conditions> for full terms and conditions.