

Changed Apr 10, 2024 11:43

Reviewed Apr 10, 2024 11:43

Erudus ID b3f93e85c0af46da96451bdb8a8a0227

Version 1.1

65118

# Sprite Lemon-Lime 330ml x24

Sprite Lemon-lime 24x0.35kg

## PRODUCT DESCRIPTION

Sprite Lemon-Lime 330ml x24 Can

|                           |                                  |
|---------------------------|----------------------------------|
| Brand                     | Coca-Cola                        |
| Manufacturer Product Code | 416993                           |
| Product Type              | Drink                            |
| Product Category          | Drinks - General                 |
| Storage Type              | Ambient                          |
| Erudus ID                 | b3f93e85c0af46da96451bdb8a8a0227 |
| Specification Type        | Drinks                           |
| Inner Component GTIN      | 05449000014535                   |
| Outer Case GTIN           | 05017726132774                   |



## INGREDIENTS

### Ingredient Declaration

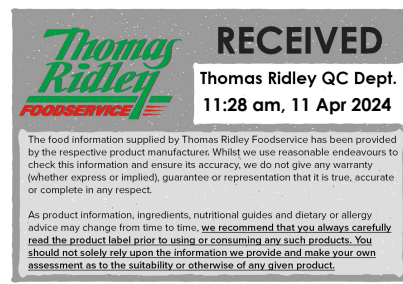
Carbonated Water, Sugar, Acids (Citric Acid, Tartaric Acid), Acidity Regulator (Sodium Citrates), Sweeteners (Acesulfame-K, Aspartame), Natural Lemon And Lime Flavourings.

## ALLERGENS

Product Contains:

|   |    |                                      |    |
|---|----|--------------------------------------|----|
| <b>Celery/Celery</b>                        | No | <b>Mustard</b>                       | No |
| <b>Cereals Containing Gluten</b>            | No | <b>Nuts (Tree)</b>                   | No |
| <b>Barley</b>                               | No | <b>Almond nuts</b>                   | No |
| <b>Oats</b>                                 | No | <b>Brazil nuts</b>                   | No |
| <b>Rye</b>                                  | No | <b>Cashew nuts</b>                   | No |
| <b>Wheat (including Spelt and Khorasan)</b> | No | <b>Hazelnuts</b>                     | No |
| <b>Crustacea</b>                            | No | <b>Macadamia (Queensland) nuts</b>   | No |
| <b>Eggs</b>                                 | No | <b>Pecan nuts</b>                    | No |
| <b>Fish</b>                                 | No | <b>Pistachio nuts</b>                | No |
| <b>Lupin</b>                                | No | <b>Walnuts</b>                       | No |
| <b>Milk</b>                                 | No | <b>Peanuts</b>                       | No |
| <b>Molluscs</b>                             | No | <b>Sesame Seeds</b>                  | No |
| <b>Palm Oil</b>                             | No | <b>Soybeans</b>                      | No |
| <b>Hydrogenated Vegetable Oil/Fat</b>       | No | <b>Sulphur Dioxide and Sulphites</b> | No |
| <b>GM Protein/DNA</b>                       | No |                                      |    |

## SUPPLEMENTARY INGREDIENT INFORMATION



ADDITIVES

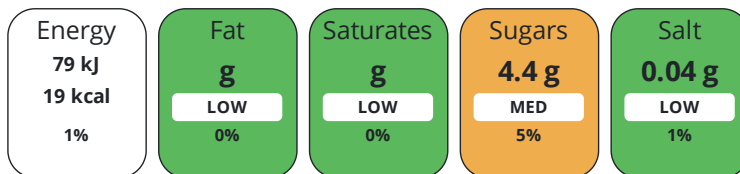
Product Contains:

|                                     |              |                                 |              |
|-------------------------------------|--------------|---------------------------------|--------------|
| <b>Artificial Antioxidants</b>      | No           | <b>Artificial Flavourings</b>   | No           |
| <b>Artificial Colours</b>           | No           | <b>Artificial Preservatives</b> | No           |
| <b>Artificial Flavour Enhancers</b> | No           | <b>Artificial Sweeteners</b>    | Yes          |
| <b>Vegan Diet</b>                   | Suitable for | <b>Vegetarian Diet</b>          | Suitable for |
| <b>Halal Diet</b>                   | Suitable for | <b>Kosher Diet</b>              | Suitable for |

DIET  
SUITABILITY

NUTRITIONAL  
INFORMATION

Each 100g/ml portion contains:



of your reference intake.

Typical values per 100g/ml : Energy 19kcal / 79kJ

| Nutrient                  | per 100ml | RI per 100ml |
|---------------------------|-----------|--------------|
| <b>Energy (kJ)</b>        | 79 kJ     | 1%           |
| <b>Energy (kcal)</b>      | 19 kcal   | 1%           |
| <b>Fat</b>                | 0 g       | 0%           |
| <b>of which Saturates</b> | 0 g       | 0%           |
| <b>Carbohydrate</b>       | 4.4 g     | 2%           |
| <b>of which Sugars</b>    | 4.4 g     | 5%           |
| <b>Protein</b>            | 0 g       | 0%           |
| <b>Salt</b>               | 0.04 g    | 1%           |

SUPPLEMENTARY  
NUTRITIONAL  
INFORMATION

HANDLING &  
STORAGE  
INFORMATION

**Directions For Use**

Best served chilled.

**Storage Instructions**

Store cool and dry

|   |          |   |    |
|---|----------|---|----|
| <b>Shelf Life from Time of Production</b> | 360 Days | <b>Exempt From Shelf Life Labelling</b> | No |
|---|----------|---|----|

ORIGIN

|  |               |
|--|---------------|
| <b>Product Country of Origin/Place of Provenance</b> | Great Britain |
|--|---------------|

PRODUCT  
CHARACTERISTICS  
CONFIGURATION

|   |                          |
|---|--------------------------|
| Standards Testing                                       |                          |
| Case Configuration                                      | Inner Pack Configuration |
| <b>Total Quantity of Inner Components in Outer Case</b> | 24 Units                 |
| <b>Is the Outer Case Splittable?</b>                    | No                       |

PRODUCT  
WEIGHTS

|                                |         |
|--------------------------------|---------|
| Inner Component                |         |
| <b>Inner Component Weight</b>  | 0.35 kg |
| Outer Case                     |         |
| <b>Outer Case Gross Weight</b> | 8.37 kg |
| <b>Outer Case Net Weight</b>   | 8 kg    |

PRODUCT DIMENSIONS

|                               |        |
|-------------------------------|--------|
| Inner Component               |        |
| <b>Inner Component Depth</b>  | 67 mm  |
| <b>Inner Component Width</b>  | 67 mm  |
| <b>Inner Component Height</b> | 116 mm |
| Outer Case                    |        |
| <b>Outer Case Depth</b>       | 404 mm |
| <b>Outer Case Width</b>       | 271 mm |
| <b>Outer Case Height</b>      | 118 mm |

PALLET INFORMATION

|   |           |                            |            |
|---|-----------|----------------------------|------------|
| <b>Quantity of Cases Per Pallet Layer</b> | 10 Cases  | <b>Pallet Height</b>       | 1.58 MTR   |
| <b>Quantity of Layers Per Pallet</b>      | 12 Layers | <b>Pallet Gross Weight</b> | 1033.88 kg |
| <b>Quantity of Cases Per Pallet</b>       | 120 Cases |                            |            |

PACKAGING

| Inner Component Packaging |           |          |                    |            |            |           |
|---------------------------|-----------|----------|--------------------|------------|------------|-----------|
| Type                      | Materials | Weight   | Recycled Plastic % | Recyclable | Returnable | Composite |
| Can                       | Aluminium | 301.92 g | - %                |            |            |           |
| Outer Case Packaging      |           |          |                    |            |            |           |
| Type                      | Materials | Weight   | Recycled Plastic % | Recyclable | Returnable | Composite |
| Case                      | Plastic   | 16.65 g  | - %                |            |            |           |

OTHER INFORMATION CONTACT INFORMATION

|  |                          |
|--|--------------------------|
| Address  | Technical Contact        |
| Coca-Cola  | Data Queries             |
| Coca-Cola Europacific Partners Great Britain Limited | npidataexchange@ccep.com |
| Pemberton House, Bakers Road                         |                          |
| Uxbridge   |                          |
| UB8 1EZ  |                          |
| United Kingdom                                       |                          |
| <b>Phone</b> 08081000000                             |                          |

The information on the [Erudus System](#) has been supplied by the manufacturers of the products and, whilst the owners of the Erudus System take steps to ensure the information is regularly updated, they give no warranty and no guarantee that the information is accurate. Product information and ingredients may change, please always read product labels carefully in addition to using the information provided by Erudus.

We do not accept liability for any inaccuracies or incorrect information contained on this site. Please visit <http://www.erudus.com/terms-and-conditions> for full terms and conditions.