

Changed Jul 04, 2024 13:50

Erudus ID bf08317f995d42788e26b9a9787ac100

Version 2.0

66136

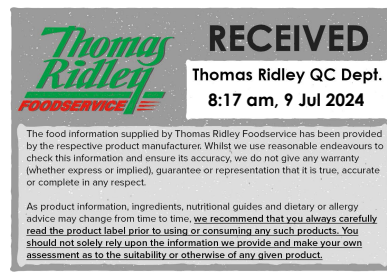
# GF Ind Raspberry & Almond Tart (1 x 12)

Raspberry & Almond Tart 12x

## PRODUCT DESCRIPTION

Individually wrapped. Crumbly shortcrust pastry case filled with a light almond frangipane and raspberry jam, topped with flaked almonds and a light sugar 'snow'. May also be used as a plated dessert. Wheat, gluten and milk-free. Suitable for vegetarians and coeliacs. Defrosted shelf-life = 14 days. (1 x 12)

Brand	Central Foods Group Ltd
Manufacturer Product Code	WLC7673
Product Type	Food
Product Category	Bakery - General
Storage Type	Frozen
Erudus ID	bf08317f995d42788e26b9a9787ac100
Specification Type	Legacy



Inner Component GTIN	5028931006729
Outer Case GTIN	05028931176736



## INGREDIENTS

### Ingredient Declaration

Ingredients: Frangipane (42%) (**EGG**, Rapeseed Oil, Ground **ALMONDS**, Rice Flour, Sugar, Brown Sugar, Tapioca Starch, Humectant (Glucose Syrup), Water, Cornflour, Raising Agents (E341, E500), Flavouring, Thickener (E415), Acidity Regulator (E260)), Pastry (42%) (Rice Flour, Tapioca Starch, Palm Oil, Oligofructose, Sugar, Water, Rapeseed Oil, Ground **ALMONDS**, Salt, Emulsifier (E471), Thickener (E415), Colour (E150a)), Raspberry Jam (11%) (Glucose-fructose Syrup, Raspberry Concentrate, Sugar, Gelling Agent (E440), Acidity Regulators (E330, E331), Colour (E163), Flavouring, Preservative (E202)), Flaked **ALMONDS** (4%), Sweet Dusting (Dextrose, Cornflour, Palm Oil).

## ALLERGENS

Product Contains:

<b>Celery/Celery</b>	No	<b>Mustard</b>	No
<b>Cereals Containing Gluten</b>	No	<b>Nuts (Tree)</b>	Yes
<b>Barley</b>	No	<b>Almond nuts</b>	Yes
<b>Oats</b>	No	<b>Brazil nuts</b>	May Contain
<b>Rye</b>	No	<b>Cashew nuts</b>	May Contain
<b>Wheat (including Spelt and Khorasan)</b>	No	<b>Hazelnuts</b>	May Contain
<b>Gluten content &lt;20ppm</b>	Yes	<b>Macadamia (Queensland) nuts</b>	No
<b>Crustacea</b>	No	<b>Pecan nuts</b>	May Contain
<b>Eggs</b>	Yes	<b>Pistachio nuts</b>	May Contain
<b>Fish</b>	No	<b>Walnuts</b>	May Contain
<b>Lupin</b>	No	<b>Peanuts</b>	May Contain
<b>Milk</b>	No	<b>Sesame Seeds</b>	No
<b>Molluscs</b>	No	<b>Soybeans</b>	No
		<b>Sulphur Dioxide and Sulphites</b>	No

Risk Source:

### Additional Allergen Information

For allergens, see ingredients in CAPITALS

#### SUPPLEMENTARY INGREDIENT INFORMATION

<b>Palm Oil</b>	Yes
<b>Hydrogenated Vegetable Oil/Fat</b>	No
<b>GM Protein/DNA</b>	No

#### ADDITIVES

Product Contains:

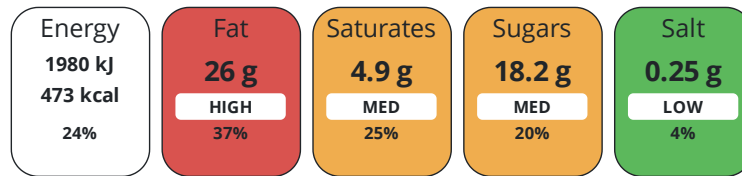
<b>Artificial Antioxidants</b>	No	<b>Artificial Flavourings</b>	No
<b>Artificial Colours</b>	No	<b>Artificial Preservatives</b>	No
<b>Artificial Flavour Enhancers</b>	No	<b>Artificial Sweeteners</b>	No

#### DIET SUITABILITY

<b>Suitable for Coeliacs</b>	Yes	<b>Halal Diet</b>	No
<b>Kosher Diet</b>	No	<b>Vegetarian Diet</b>	Suitable for
<b>Vegan Diet</b>	No		

#### NUTRITIONAL INFORMATION

Each 100g/ml portion contains:



of your reference intake.

Typical values per 100g/ml : Energy 473kcal / 1980kJ

Nutrient	per 100g/ml	RI per 100g/ml	per 90g/ml serving	RI per 90g/ml serving
<b>Energy (kJ)</b>	1980 kJ	24%	1782 kJ	21%
<b>Energy (kcal)</b>	473 kcal	24%	425.7 kcal	21%
<b>Fat</b>	26 g	37%	23.4 g	33%
of which Saturates	4.9 g	25%	4.4 g	22%
<b>Carbohydrate</b>	52 g	20%	46.8 g	18%
of which Sugars	18.2 g	20%	16.4 g	18%
<b>Fibre</b>	1.8 g		1.6 g	
<b>Protein</b>	6.8 g	14%	6.1 g	12%
<b>Salt</b>	0.25 g	4%	0.2 g	3%
<b>Sodium</b>	100 mg		90 mg	
<b>Serving Size</b>	90 g			

#### SUPPLEMENTARY NUTRITIONAL INFORMATION

HFSS (HIGH IN  
FAT, SALT AND  
SUGAR)

<b>HFSS Status</b>	Yes
--------------------	-----

HANDLING & STORAGE INFORMATION

**Directions For Use**

From Frozen unless otherwise stated Defrost at room temperature for 6 hours. Once defrosted do not refreeze. Once defrosted, label each individual product with Best Before Date: date of defrost + 14 days.

**Storage Instructions**

Keep Frozen. Store at -18°C or below

**Shelf Life from Time of Production** 274 Days

ACCREDITATIONS/ CERTIFICATIONS/ ASSURANCE SCHEMES ORIGIN

**BRCGS Certified**

**Other Accreditation**

**Roundtable of Sustainable Palm Oil (RSPO)**

**Product Country of Origin/Place of Provenance** United Kingdom

**Additional Origin Details**

United Kingdom

PRODUCT CHARACTERISTICS

Standards Testing

**Do you undertake trend analysis of microbiological results?** No

**Is shelf life testing undertaken?** No

Microbiological Standards

Organism	Description	Frequency	Target	Maximum	Sample (g or ml)
Bacillus Cereus (cfu/g or ml)		Quarterly	<1000	1000	-
E. Coli (cfu/g or ml)		Quarterly	<100	100	-
Enterobacteriaceae (cfu/g or ml)		Quarterly	<1000	1000	-
Listeria Monocytogenes (cfu/g or ml)	Not detected in 25g	Quarterly	=0	0	25
Staphylococcus Aureus (cfu/g or ml)		Quarterly	<100	100	-
Total Viable Count (TVC) (cfu/g or ml)		Quarterly	<5000	5000	-
Salmonella (cfu/g or ml)	Not detected in 25g	Quarterly	=0	0	25
Yeast (cfu/g or ml)		Quarterly	<1000	1000	-
Moulds (cfu/g or ml)		Quarterly	<1000	1000	-

CONFIGURATION

Case Configuration

Inner Pack Configuration

**Total Quantity of Inner Components in Outer Case** 12 Units

**Is the Outer Case Splittable?** Yes

PRODUCT WEIGHTS

Inner Component

**Variable Weight Consumer Item** No

**Weight/Volume**

N/A

Outer Case

**Outer Case Gross Weight** 1.26 kg

**Outer Case Net Weight** 1.08 kg

PRODUCT DIMENSIONS

Inner Component	
<b>Inner Component Depth</b>	0 mm
<b>Inner Component Width</b>	0 mm
<b>Inner Component Height</b>	0 mm
Outer Case	
<b>Outer Case Depth</b>	280 mm
<b>Outer Case Width</b>	193 mm
<b>Outer Case Height</b>	76 mm

PALLET INFORMATION

<b>Quantity of Cases Per Pallet Layer</b>	20 Cases	<b>Pallet Height</b>	1.29 MTR
<b>Quantity of Layers Per Pallet</b>	15 Layers	<b>Pallet Gross Weight</b>	393 kg
<b>Quantity of Cases Per Pallet</b>	300 Cases		

PACKAGING

Inner Component Packaging						
Type	Materials	Weight	Recycled Plastic %	Recyclable	Returnable	Composite
Bag	Plastic	24 g	- %			
Bag	Paper/Cardboard	137 g	- %			
Bag	Aluminium	24 g	- %			
Transport Packaging						
Type	Materials	Weight	Recycled Plastic %	Recyclable	Returnable	Composite
Other	Plastic	280 g	- %		Yes	

OTHER INFORMATION CONTACT INFORMATION

Address	Technical Contact
Central Foods Group Ltd	Chris Stobart
Maple Court	Technical Manager
Ash Lane, Collingtree	technical@centralfoods.co.uk
Collingtree	
Northants	P: (Phone) 01604 878 276
NN4 0NB	
England	
P: (Phone) 01604 858 522	
Complaints Contact	Commercial Contact
Karen Wright	Oliver Sampson
Customer Care Admin Assistant	Commercial Manager
kwright@centralfoods.co.uk	osampson@centralfoods.co.uk
P: (Phone) 01604 878 299	P: (Phone) 07715 073 273

The information on the [Erudus System](#) has been supplied by the manufacturers of the products and, whilst the owners of the Erudus System take steps to ensure the information is regularly updated, they give no warranty and no guarantee that the information is accurate. Product information and ingredients may change, please always read product labels carefully in addition to using the information provided by Erudus.

We do not accept liability for any inaccuracies or incorrect information contained on this site. Please visit <http://www.erudus.com/terms-and-conditions> for full terms and conditions.