

Changed Aug 12, 2024 14:38

Reviewed Aug 12, 2024 14:38

Erudus ID f68dd006722840e28984ff312d7f86d9

Version 3.0

68103

Cheddar Cheese Sauce 12 x 1L

Cheddar Cheese Sauce

PRODUCT DESCRIPTION

A heat treated cheese sauce made with cheddar cheese (10%), milk and vegetable stock.

| | |
|---------------------------|----------------------------------|
| Brand | Macphie Ltd |
| Manufacturer Product Code | 10000219 |
| Product Type | Food |
| Product Category | Sauces & Dips |
| Storage Type | Ambient |
| Erudus ID | f68dd006722840e28984ff312d7f86d9 |
| Specification Type | Generic |

RECEIVED

Thomas Ridley QC Dept.
4:50 pm, 12 Aug 2024



The food information supplied by Thomas Ridley Foodservice has been provided by the respective product manufacturer. Whilst we use reasonable endeavours to check this information and ensure its accuracy, we do not give any warranty (whether express or implied), guarantee or representation that it is true, accurate or complete in any respect.

As product information, ingredients, nutritional guides and dietary or allergy advice may change from time to time, we recommend that you always carefully read the product label prior to using or consuming any such products. You should not solely rely upon the information we provide and make your own assessment as to the suitability or otherwise of any given product.



| | |
|----------------------|----------------|
| Inner Component GTIN | 5017506000415 |
| Outer Case GTIN | 05017506000422 |



INGREDIENTS

Ingredient Declaration

Reconstituted Skimmed MILK, Reconstituted Vegetable Stock [Water, Salt, Yeast Extract, Maltodextrin, Sugar, Dried Onion, Dried Carrot, Vegetable Oil (Sunflower), Dried Herb], Reconstituted Whole MILK, Cheddar Cheese (10%) (MILK), Modified Starch, Cheese Powder (2%) (MILK), Vegetable Oil (Palm), Starch, Acidity Regulator (Trisodium Citrate), Emulsifier (SOYA Lecithin), Colour (Beta-Carotene).

ALLERGENS

Product Contains:

| | | | |
|---|-----|--------------------------------------|-----|
| Celery/Celeriac | No | Mustard | No |
| Cereals Containing Gluten | No | Nuts (Tree) | No |
| Barley | No | Almond nuts | No |
| Oats | No | Brazil nuts | No |
| Rye | No | Cashew nuts | No |
| Wheat (including Spelt and Khorasan) | No | Hazelnuts | No |
| Crustacea | No | Macadamia (Queensland) nuts | No |
| Eggs | No | Pecan nuts | No |
| Fish | No | Pistachio nuts | No |
| Lupin | No | Walnuts | No |
| Milk | Yes | Peanuts | No |
| Molluscs | No | Sesame Seeds | No |
| | | Soybeans | Yes |
| | | Sulphur Dioxide and Sulphites | No |

Additional Allergen Information

Contains: Milk and Soya.

SUPPLEMENTARY
INGREDIENT
INFORMATION

| | |
|---------------------------------------|-----|
| Palm Oil | Yes |
| Hydrogenated Vegetable Oil/Fat | No |
| GM Protein/DNA | No |

ADDITIVES

Product Contains:

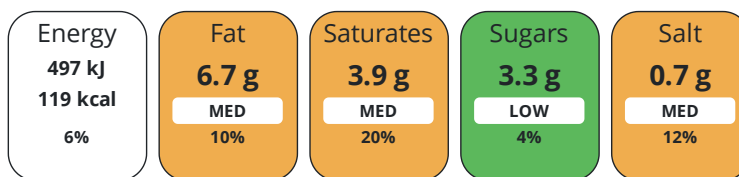
| | | | |
|-------------------------------------|----|---------------------------------|----|
| Artificial Antioxidants | No | Artificial Flavourings | No |
| Artificial Colours | No | Artificial Preservatives | No |
| Artificial Flavour Enhancers | No | Artificial Sweeteners | No |

DIET
SUITABILITY

| | | | |
|-------------------|--------------|------------------------|--------------|
| Vegan Diet | No | Vegetarian Diet | Suitable for |
| Halal Diet | Suitable for | Kosher Diet | No |

NUTRITIONAL
INFORMATION

Each 100g/ml portion contains:



of your reference intake.

Typical values per 100g/ml : Energy 119kcal / 497kJ

| Nutrient | per 100ml | RI per 100ml |
|---------------------------|-----------|--------------|
| Energy (kJ) | 497 kJ | 6% |
| Energy (kcal) | 119 kcal | 6% |
| Fat | 6.7 g | 10% |
| of which Saturates | 3.9 g | 20% |
| Carbohydrate | 9 g | 3% |
| of which Sugars | 3.3 g | 4% |
| Fibre | 0 g | |
| Protein | 5.6 g | 11% |
| Salt | 0.7 g | 12% |

SUPPLEMENTARY
NUTRITIONAL
INFORMATION

HANDLING &
STORAGE
INFORMATION

Directions For Use

Please see technical information sheet. Available at Macphie.com.

Storage Instructions

Unopened, store in a cool, dry place (<20°C). Opened, store in hygienic chill. Shelf life opened 7 days.

Shelf Life from Time of Production 270 Days

ACCREDITATIONS/
CERTIFICATIONS/
ASSURANCE
SCHEMES
ORIGIN

BRCGS Certified
Other Accreditation

Roundtable of Sustainable Palm Oil (RSPO)

Product Country of Origin/Place of United Kingdom

Provenance

PRODUCT
CHARACTERISTICS

Standards Testing

Do you undertake trend analysis of microbiological results? No

Is shelf life testing undertaken? No

CONFIGURATION

Case Configuration

Inner Pack Configuration

Total Quantity of Inner Components in Outer Case 12 Units

Is the Outer Case Splittable? No

PRODUCT WEIGHTS

Inner Component

Variable Weight Consumer Item Yes

Inner Component Weight 1052 g

Outer Case

Outer Case Gross Weight 13.03 kg

Outer Case Net Weight 12.63 kg

PRODUCT DIMENSIONS

Inner Component

Inner Component Depth 94 mm

Inner Component Width 60 mm

Inner Component Height 165 mm

Outer Case

Outer Case Depth 388 mm

Outer Case Width 199 mm

Outer Case Height 170 mm

PALLET INFORMATION

Quantity of Cases Per Pallet Layer 15 Cases

Pallet Type UK Standard Pallet

Quantity of Layers Per Pallet 5 Layers

Pallet Height 0.98 MTR

Quantity of Cases Per Pallet 75 Cases

Pallet Gross Weight 987.2 kg

PACKAGING

Inner Component Packaging

| Type | Materials | Weight | Recycled Plastic % | Recyclable | Returnable | Composite |
|------------|-----------------|--------|--------------------|------------|------------|-----------|
| Tetra Pack | Plastic | 3 g | - % | | | |
| Tetra Pack | Paper/Cardboard | 21 g | - % | | | |
| Tetra Pack | Aluminium | 1 g | - % | | | |

Outer Case Packaging

| Type | Materials | Weight | Recycled Plastic % | Recyclable | Returnable | Composite |
|------|-----------------|--------|--------------------|------------|------------|-----------|
| Case | Plastic | 16 g | - % | | | |
| Case | Paper/Cardboard | 75 g | - % | | | |

Transport Packaging

| Type | Materials | Weight | Recycled Plastic % | Recyclable | Returnable | Composite |
|-------|-----------------|---------|--------------------|------------|------------|-----------|
| Other | Plastic | 514 g | - % | | | |
| Other | Paper/Cardboard | 0.43 g | - % | | | |
| Other | Wood | 30000 g | - % | | | |

OTHER INFORMATION

Commodity Code 2103909089

Manufacturer Comments

For microbiological & analytical data please be advised this product is commercially sterile and free from all viable micro-organisms until opened.

CONTACT
INFORMATION

Address

Macphie Ltd
Glenbervie
Stonehaven
AB39 3YG
Scotland

P: (Phone) 01569 740641

The information on the [Erudus System](#) has been supplied by the manufacturers of the products and, whilst the owners of the Erudus System take steps to ensure the information is regularly updated, they give no warranty and no guarantee that the information is accurate. Product information and ingredients may change, please always read product labels carefully in addition to using the information provided by Erudus.

We do not accept liability for any inaccuracies or incorrect information contained on this site.
Please visit <http://www.erudus.com/terms-and-conditions> for full terms and conditions.