

Changed Aug 12, 2024 10:44

Reviewed Aug 12, 2024 10:44

Erudus ID 2baa0c46cf0647618db36bef0285aca0

Version 2.0

68123

6x70cl Monin Toffee Nut syrup

Toffee Nut 6x

PRODUCT DESCRIPTION

Monin Toffee Nut

Brand	Bennett Opie Ltd
Manufacturer Product Code	H1321
Product Type	Drink
Product Category	Juices and Cordials
Storage Type	Ambient
Erudus ID	2baa0c46cf0647618db36bef0285aca0
Specification Type	Drinks



Inner Component GTIN 3052910041007

Outer Case GTIN 3052910641009



INGREDIENTS

Ingredient Declaration

Sugar, water, natural flavouring, salt, colour (E150a)

ALLERGENS

Product Contains:

Celery/Celeriac	No	Mustard	No
Cereals Containing Gluten	No	Nuts (Tree)	No
Barley	No	Almond nuts	No
Oats	No	Brazil nuts	No
Rye	No	Cashew nuts	No
Wheat (including Spelt and Khorasan)	No	Hazelnuts	No
Crustacea	No	Macadamia (Queensland) nuts	No
Eggs	No	Pecan nuts	No
Fish	No	Pistachio nuts	No
Lupin	No	Walnuts	No
Milk	No	Peanuts	No
Molluscs	No	Sesame Seeds	No
		Soybeans	No
		Sulphur Dioxide and Sulphites	May Contain

Risk Source:

SUPPLEMENTARY INGREDIENT INFORMATION

Palm Oil	No
Hydrogenated Vegetable Oil/Fat	No
GM Protein/DNA	No

RECEIVED

Thomas Ridley QC Dept.

4:31 pm, 12 Aug 2024

The food information supplied by Thomas Ridley Foodservice has been provided by the respective product manufacturer. Whilst we use reasonable endeavours to check this information and ensure its accuracy, we do not give any warranty (whether express or implied), guarantee or representation that it is true, accurate or complete in any respect.

As product information, ingredients, nutritional guides and dietary or allergy advice may change from time to time, we recommend that you always carefully read the product label prior to using or consuming any such products. You should not solely rely upon the information we provide and make your own assessment as to the suitability or otherwise of any given product.



ADDITIVES

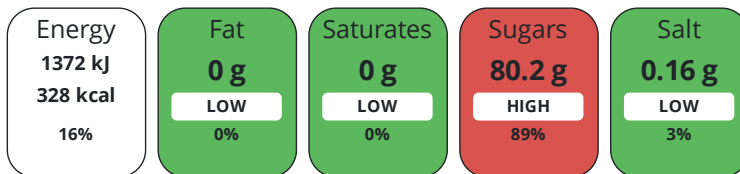
Product Contains:

Artificial Antioxidants	No	Artificial Flavourings	No
Artificial Colours	No	Artificial Preservatives	No
Artificial Flavour Enhancers	No	Artificial Sweeteners	No
Vegan Diet	Suitable for	Vegetarian Diet	Suitable for
Halal Diet	Suitable for	Kosher Diet	Suitable for

DIET
SUITABILITY

NUTRITIONAL
INFORMATION

Each 100g/ml portion contains:



of your reference intake.

Typical values per 100g/ml : Energy 328kcal / 1372kJ

Nutrient	per 100ml	RI per 100ml
Energy (kJ)	1372 kJ	16%
Energy (kcal)	328 kcal	16%
Fat	0 g	0%
of which Saturates	0 g	0%
Carbohydrate	80.3 g	31%
of which Sugars	80.2 g	89%
Fibre	0 g	
Protein	0 g	0%
Salt	0.16 g	3%
Sodium	65 mg	

SUPPLEMENTARY
NUTRITIONAL
INFORMATION

HFSS (HIGH IN
FAT, SALT AND
SUGAR)

HFSS Status	Yes
--------------------	-----

HANDLING &
STORAGE
INFORMATION

Directions For Use	Dilution advice: 1 volume of syrup for 8 volumes (water, cocktail or other applications)
Storage Instructions	Storage conditions before opening: room temperature (<25°C). Storage conditions after opening: 3 months at room temperature, closed in a clean, dry place.

Shelf Life from Time of Production	730 Days
-------------------------------------------	----------

ACCREDITATIONS/
CERTIFICATIONS/
ASSURANCE
SCHEMES
ORIGIN

BRCGS Certified	
------------------------	--

Product Country of Origin/Place of	France
-------------------------------------------	--------

Provenance	
-------------------	--

Additional Origin Details	manufactured in France
----------------------------------	------------------------

PRODUCT
CHARACTERISTICS

Standards Testing	
--------------------------	--

Do you undertake trend analysis of microbiological results? Yes **Is shelf life testing undertaken?** Yes

Microbiological Standards

Organism	Description	Frequency	Target	Maximum	Sample (g or ml)
Coliforms (cfu/g or ml)		Annually	<10	10	10
Total Viable Count (TVC) (cfu/g or ml)		Annually	<100	100	10
Yeast (cfu/g or ml)		Annually	<10	10	10
Moulds (cfu/g or ml)		Annually	<10	10	10

Analytical Standards

Test	Description	Frequency	Target	Range	Sample (g or ml)
Brix (°Bx)		Every Batch	=62.5	62 to 63	10
pH		Every Batch	=5	5 to 5	10

CONFIGURATION

Case Configuration

Inner Pack Configuration

Total Quantity of Inner Components in Outer Case	6 Units
Is the Outer Case Splittable?	No

PRODUCT WEIGHTS

Inner Component	
Outer Case	
Outer Case Gross Weight	8.5 kg
Outer Case Net Weight	4.2 kg

PRODUCT DIMENSIONS

Inner Component	
Inner Component Depth	73 mm
Inner Component Width	73 mm
Inner Component Height	320 mm
Outer Case	
Outer Case Depth	240 mm
Outer Case Width	165 mm
Outer Case Height	320 mm

PALLET INFORMATION

Quantity of Cases Per Pallet Layer	29 Cases	Pallet Type	UK Standard Pallet
Quantity of Layers Per Pallet	4 Layers	Pallet Height	1.5 MTR
Quantity of Cases Per Pallet	116 Cases	Pallet Gross Weight	999.99 kg

PACKAGING

Inner Component Packaging

Type	Materials	Weight	Recycled Plastic %	Recyclable	Returnable	Composite
Bottle	Paper/Cardboard	2 g	- %			
Bottle	Aluminium	3 g	- %			
Bottle	Glass	443 g	- %			

Outer Case Packaging

Type	Materials	Weight	Recycled Plastic %	Recyclable	Returnable	Composite
Case	Paper/Cardboard	245 g	- %			

Transport Packaging

Type	Materials	Weight	Recycled Plastic %	Recyclable	Returnable	Composite
Other	Plastic	300 g	- %			
Other	Wood	30000 g	- %			

OTHER INFORMATION

Commodity Code 2106905999

CONTACT INFORMATION

Address

Bennett Opie Ltd
 Wentworth Court
 Sittingbourne
 Kent
 ME10 3RN
 England

P: (Phone) 01795 476154

Complaints Contact

Milena Gradowska
 Technical Manager
 milena.gradowska@b-opie.com

P: (Phone) 01795413734

Technical Contact

Milena Gradowska
 Technical Manager
 milena.gradowska@b-opie.com

P: (Phone) 01795413737

Commercial Contact

Paul Fox
 Commercial Director
 paul.fox@b-opie.com

P: (Phone) 01795413750

The information on the [Erudus System](#) has been supplied by the manufacturers of the products and, whilst the owners of the Erudus System take steps to ensure the information is regularly updated, they give no warranty and no guarantee that the information is accurate. Product information and ingredients may change, please always read product labels carefully in addition to using the information provided by Erudus.

We do not accept liability for any inaccuracies or incorrect information contained on this site.
 Please visit <http://www.erudus.com/terms-and-conditions> for full terms and conditions.