

Changed Jul 17, 2024 15:07

Reviewed Jul 17, 2024 15:07

Erudus ID 90a1cd1ef8c9411dbfb5f06f5bf33095

Version 2.0

68134

Yazoo Strawberry Milk Drink 12 x 300ml UHT

Strawberry Milk Drink 12x

PRODUCT DESCRIPTION

UHT strawberry milk drink in 300ml PET bottle

Brand	Friesland Campina UK Ltd
Manufacturer Product Code	704526
Product Type	Drink
Product Category	Milkshakes & Flavoured Milk
Storage Type	Ambient
Erudus ID	90a1cd1ef8c9411dbfb5f06f5bf33095
Specification Type	Drinks



Inner Component GTIN	5410438035850
Outer Case GTIN	5410438035867



INGREDIENTS

Ingredient Declaration

Semi- skimmed MILK, skimmed MILK, sugar, strawberry juice from concentrate (1%), natural flavouring, stabiliser: gellan gum. colour: beta- carotene.


ALLERGENS

Product Contains:


Celery/Celериac	No	Mustard	No
Cereals Containing Gluten	No	Nuts (Tree)	No
Barley	No	Almond nuts	No
Oats	No	Brazil nuts	No
Rye	No	Cashew nuts	No
Wheat (including Spelt and Khorasan)	No	Hazelnuts	No
Crustacea	No	Macadamia (Queensland) nuts	No
Eggs	No	Pecan nuts	No
Fish	No	Pistachio nuts	No
Lupin	No	Walnuts	No
Milk	Yes	Peanuts	No
Molluscs	No	Sesame Seeds	No
		Soybeans	No
		Sulphur Dioxide and Sulphites	No

SUPPLEMENTARY INGREDIENT INFORMATION

Palm Oil	No
Hydrogenated Vegetable Oil/Fat	No
GM Protein/DNA	No



RECEIVED
Thomas Ridley QC Dept.
9:12 am, 18 Jul 2024



The food information supplied by Thomas Ridley Foodservice has been provided by the respective product manufacturer. Whilst we use reasonable endeavours to check this information and ensure its accuracy, we do not give any warranty (whether express or implied), guarantee or representation that it is true, accurate or complete in any respect.

As product information, ingredients, nutritional guides and dietary or allergy advice may change from time to time, we recommend that you always carefully read the product label prior to using or consuming any such products. You should not solely rely upon the information we provide and make your own assessment as to the suitability or otherwise of any given product.

ADDITIVES

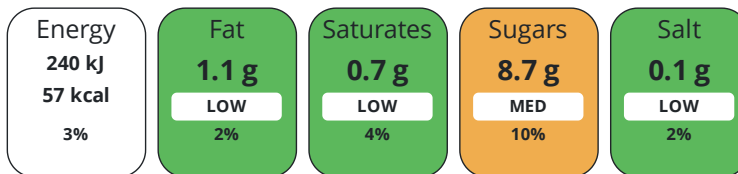
Product Contains:

Artificial Antioxidants	No	Artificial Flavourings	No
Artificial Colours	Yes	Artificial Preservatives	No
Artificial Flavour Enhancers	No	Artificial Sweeteners	No
Vegan Diet	No	Vegetarian Diet	Suitable for
Halal Diet	No	Kosher Diet	No

DIET SUITABILITY

NUTRITIONAL INFORMATION

Each 100g/ml portion contains:



of your reference intake.

Typical values per 100g/ml : Energy 57kcal / 240kj

Nutrient	per 100ml	RI per 100ml	per 300ml serving	RI per 300ml serving
Energy (kJ)	240 kJ	3%	720 kJ	9%
Energy (kcal)	57 kcal	3%	171 kcal	9%
Fat	1.1 g	2%	3.3 g	5%
of which Saturates	0.7 g	4%	2.1 g	11%
Carbohydrate	8.7 g	3%	26.1 g	10%
of which Sugars	8.7 g	10%	26.1 g	29%
Protein	3 g	6%	9 g	18%
Salt	0.1 g	2%	0.3 g	5%

Serving Size 300 ml

VITAMINS AND MINERALS

Nutrient	per 100ml	RI per 100ml	per 300ml serving	RI per 300ml serving
Calcium	105 mg	13%	315 mg	39%

SUPPLEMENTARY NUTRITIONAL INFORMATION

HANDLING & STORAGE INFORMATION

Directions For Use
once opened keep refrigerated and treat as fresh milk

Storage Instructions
Store in a cool dry place.

Shelf Life from Time of Production 150 Days

ACCREDITATIONS/ CERTIFICATIONS/ ASSURANCE SCHEMES

FSSC 22000
ISO 14001 (Environmental Management)
BRCGS Certified

IFS Food Standard
School Approved (The Requirement for School Food Regulation 2014)

ORIGIN

Product Country of Origin/Place of Provenance Belgium

PRODUCT CHARACTERISTICS	Standards Testing						
	Do you undertake trend analysis of microbiological results?	No	Is shelf life testing undertaken?		No		
CONFIGURATION	Case Configuration		Inner Pack Configuration				
	Total Quantity of Inner Components in Outer Case	12 Units					
	Is the Outer Case Splittable?	No					
PRODUCT WEIGHTS	Inner Component						
	Net Drained Weight	0.333 kg					
	Outer Case						
	Outer Case Gross Weight	4.05 kg					
PRODUCT DIMENSIONS	Outer Case						
	Outer Case Net Weight	3.78 kg					
	Inner Component						
	Inner Component Depth	64 mm					
	Inner Component Width	150 mm					
	Inner Component Height	64 mm					
	Outer Case						
	Outer Case Depth	262 mm					
PALLET INFORMATION	Outer Case Width	195 mm					
	Outer Case Height	153 mm					
	Quantity of Cases Per Pallet Layer	22 Cases	Pallet Height	1.41 MTR			
	Quantity of Layers Per Pallet	8 Layers	Pallet Gross Weight	744.4 kg			
PACKAGING	Quantity of Cases Per Pallet	176 Cases					
	Inner Component Packaging						
	Type	Materials	Weight	Recycled Plastic %	Recyclable	Returnable	Composite
	Bottle	Plastic	18 g	- %			
	Outer Case Packaging						
	Type	Materials	Weight	Recycled Plastic %	Recyclable	Returnable	Composite
	Case	Plastic	15 g	- %			
	Case	Paper/Cardboard	43 g	- %			
	Transport Packaging						
	Type	Materials	Weight	Recycled Plastic %	Recyclable	Returnable	Composite
	Other	Plastic	365 g	- %		Yes	
	Other	Paper/Cardboard	3344 g	- %		Yes	
	OTHER INFORMATION	Intrastat/Taric Code	22029995	Identification/Health Marks		BE M322A EC	

CONTACT
INFORMATION

Address

Friesland Campina UK Ltd
1st Floor, The Peak
5 Wilton Road
London
SW1V 1AN
England

The information on the [Erudus System](#) has been supplied by the manufacturers of the products and, whilst the owners of the Erudus System take steps to ensure the information is regularly updated, they give no warranty and no guarantee that the information is accurate. Product information and ingredients may change, please always read product labels carefully in addition to using the information provided by Erudus.

We do not accept liability for any inaccuracies or incorrect information contained on this site.
Please visit <http://www.erudus.com/terms-and-conditions> for full terms and conditions.