

Changed Mar 18, 2024 13:42

Reviewed Mar 18, 2024 13:42

Erudus ID 6d219a4deeb543f7963accdd04f158bf

Version 4.0

68149

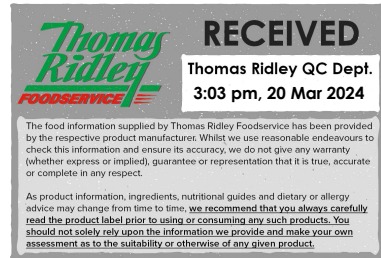
Houmous 1KG

Houmous 1kg 1x1kg

PRODUCT DESCRIPTION

GROUND CHICK PEAS WITH SESAME SEED PASTE AND GARLIC

Brand	Midland Chilled Foods Ltd
Manufacturer Product Code	SA890
Product Type	Food
Product Category	Other
Storage Type	Chilled
Erudus ID	6d219a4deeb543f7963accdd04f158bf
Specification Type	Generic



INGREDIENTS

Ingredient Declaration

Cooked Chickpeas (46%) [Water, Chickpeas], Rapeseed Oil (19%), Water, **SESAME SEED** Paste (14%), Acidity Regulator Citric Acid, Salt, Garlic Granules, Preservative Potassium Sorbate

ALLERGENS

Product Contains:

Celery/Celery	No	Mustard	No
Cereals Containing Gluten	No	Nuts (Tree)	No
Barley	No	Almond nuts	No
Oats	No	Brazil nuts	No
Rye	No	Cashew nuts	No
Wheat (including Spelt and Khorasan)	No	Hazelnuts	No
Crustacea	No	Macadamia (Queensland) nuts	No
Eggs	No	Pecan nuts	No
Fish	No	Pistachio nuts	No
Lupin	No	Walnuts	No
Milk	No	Peanuts	No
Molluscs	No	Sesame Seeds	Yes
		Soybeans	No
		Sulphur Dioxide and Sulphites	No

Additional Allergen Information

Contains: Sesame Seeds

SUPPLEMENTARY INGREDIENT INFORMATION

Palm Oil	No
Hydrogenated Vegetable Oil/Fat	No
GM Protein/DNA	No

ADDITIVES

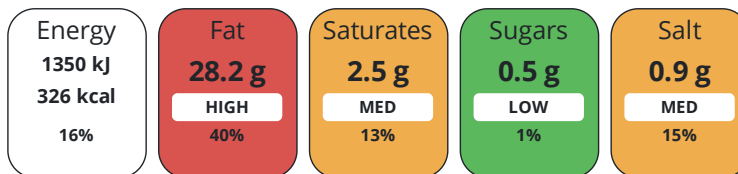
Product Contains:

Artificial Antioxidants	No	Artificial Flavourings	No
Artificial Colours	No	Artificial Preservatives	Yes
Artificial Flavour Enhancers	No	Artificial Sweeteners	No
Vegan Diet	Suitable for	Vegetarian Diet	Suitable for
Halal Diet	No	Kosher Diet	No

DIET
SUITABILITY

NUTRITIONAL
INFORMATION

Each 100g/ml portion contains:



of your reference intake.

Typical values per 100g/ml : Energy 326kcal / 1350kJ

Nutrient	per 100g	RI per 100g	per 100g serving	RI per 100g serving
Energy (kJ)	1350 kJ	16%	1350 kJ	16%
Energy (kcal)	326 kcal	16%	326 kcal	16%
Fat	28.2 g	40%	28.2 g	40%
of which Saturates	2.5 g	13%	2.5 g	13%
of which Mono-unsaturates	14.5 g		14.5 g	
of which Polyunsaturates	9.6 g		9.6 g	
Carbohydrate	8.1 g	3%	8.1 g	3%
of which Sugars	0.5 g	1%	0.5 g	1%
Fibre	4.9 g		4.9 g	
Protein	7 g	14%	7 g	14%
Salt	0.9 g	15%	0.9 g	15%
Sodium	300 mg		300 mg	
Serving Size	100 g			

SUPPLEMENTARY
NUTRITIONAL
INFORMATION

HFSS (HIGH IN
FAT, SALT AND
SUGAR)
HANDLING &
STORAGE
INFORMATION

HFSS Status	No
Directions For Use	READY TO EAT
Storage Instructions	REFRIGERATE BETWEEN 1 TO 5 DEGREES CENTIGRADE.
Shelf Life from Time of Production	24 Days
Exempt From Shelf Life Labelling	No

ACCREDITATIONS/
CERTIFICATIONS/
ASSURANCE
SCHEMES

BRCGS Certified		Other Accreditation	
------------------------	--	----------------------------	--

ORIGIN	Product Country of Origin/Place of Provenance United Kingdom							
PRODUCT CHARACTERISTICS CONFIGURATION	Additional Origin Details							
	UK							
	Standards Testing							
	Case Configuration	Inner Pack Configuration						
PRODUCT WEIGHTS	Total Quantity of Inner Components in Outer Case		1 Units					
	Is the Outer Case Splittable?		Yes					
	Inner Component							
	Variable Weight Consumer Item		No					
	Inner Component Weight		1 kg					
	Net Drained Weight		1 kg					
	Outer Case							
	Outer Case Gross Weight		0 kg					
	Outer Case Net Weight		0 kg					
	PRODUCT DIMENSIONS	Inner Component						
Inner Component Depth		191 mm						
Inner Component Width		128 mm						
Inner Component Height		72 mm						
Outer Case								
Outer Case Depth		0 mm						
Outer Case Width		0 mm						
Outer Case Height		0 mm						
PALLET INFORMATION		Quantity of Cases Per Pallet Layer		10 Cases		Pallet Height		0.5 MTR
		Quantity of Layers Per Pallet		50 Layers				
	Quantity of Cases Per Pallet		500 Cases					
	Inner Component Packaging							
PACKAGING	Type	Materials	Weight	Recycled Plastic %	Recyclable	Returnable	Composite	
	Tub	Plastic	57 g	- %				
	Tub	Paper/Cardboard	1 g	- %				
	Inner Component Packaging							
OTHER INFORMATION	Manufacturer Comments							
	NONE							
CONTACT INFORMATION	Address		Technical Contact					
	Midland Chilled Foods Ltd		Patricia Mattara					
	Strings Lane		QA Manager					
	Willenhall		technical@midlandchilled.co.uk					
Wolverhampton								
WY13 1LX		P: (Phone) 01902 366004						
England								
P: (Phone) 01902 366004								

The information on the [Erudus System](#) has been supplied by the manufacturers of the products and, whilst the owners of the Erudus System take steps to ensure the information is regularly updated, they give no warranty and no guarantee that the information is accurate. Product information and ingredients may change, please always read product labels carefully in addition to using the information provided by Erudus.

We do not accept liability for any inaccuracies or incorrect information contained on this site.
Please visit <http://www.erudus.com/terms-and-conditions> for full terms and conditions.