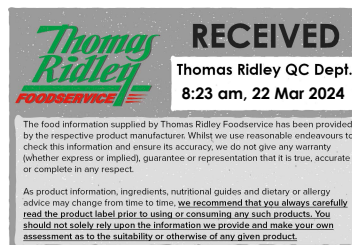


Changed Mar 21, 2024 15:56

Reviewed Mar 21, 2024 15:56

Erudus ID ae21b0323a204e95a8c5e9f3c1200895

Version 2.0



68186

Balsamic Glaze - 6 x 500ml

Balsamic Glaze 6x500ml

PRODUCT DESCRIPTION

A flavoursome syrupy glaze made from balsamic vinegar

Brand	Gourmet Classic
Manufacturer Product Code	8200-092
Product Type	Food
Product Category	Condiments
Storage Type	Ambient
Erudus ID	ae21b0323a204e95a8c5e9f3c1200895
Specification Type	Generic
Inner Component GTIN	5036582000904
Outer Case GTIN	05036582001468



INGREDIENTS

Ingredient Declaration

Balsamic Vinegar (82%), (Cooked Grape Must, White Wine Vinegar, Sugar, Colour: SULPHITE ammonia caramel, Thickener: Xanthan Gum), Water, Sugar, Glucose Powder, Colour: Plain Caramel, Thickener: Xanthan Gum.

ALLERGENS

Product Contains:

Celery/Celериac	No	Mustard	No
Cereals Containing Gluten	No	Nuts (Tree)	No
Barley	No	Almond nuts	No
Oats	No	Brazil nuts	No
Rye	No	Cashew nuts	No
Wheat (including Spelt and Khorasan)	No	Hazelnuts	No
Crustacea	No	Macadamia (Queensland) nuts	No
Eggs	No	Pecan nuts	No
Fish	No	Pistachio nuts	No
Lupin	No	Walnuts	No
Milk	No	Peanuts	No
Molluscs	No	Sesame Seeds	No
		Soybeans	No
		Sulphur Dioxide and Sulphites	Yes

Additional Allergen Information

Contains SULPHITES

SUPPLEMENTARY INGREDIENT INFORMATION

Palm Oil	No
Hydrogenated Vegetable Oil/Fat	No
GM Protein/DNA	No

ADDITIVES

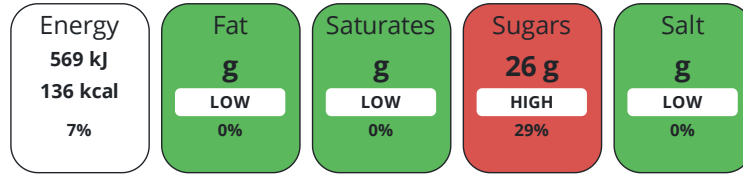
Product Contains:

Artificial Antioxidants	No	Artificial Flavourings	No
Artificial Colours	No	Artificial Preservatives	Yes
Artificial Flavour Enhancers	No	Artificial Sweeteners	No
Vegan Diet	Suitable for	Vegetarian Diet	Suitable for
Halal Diet	No	Kosher Diet	No

DIET
SUITABILITY

NUTRITIONAL
INFORMATION

Each 100g/ml portion contains:



of your reference intake.

Typical values per 100g/ml : Energy 136kcal / 569kJ

Nutrient	per 100ml	RI per 100ml
Energy (kJ)	569 kJ	7%
Energy (kcal)	136 kcal	7%
Fat	0 g	0%
of which Saturates	0 g	0%
Carbohydrate	33 g	13%
of which Sugars	26 g	29%
Fibre	< 0.5 g	
Protein	0 g	0%
Salt	0 g	0%

Source of Nutritional Information Calculation from known/accepted datasets

SUPPLEMENTARY
NUTRITIONAL
INFORMATION

HANDLING &
STORAGE
INFORMATION

Directions For Use

To open remove screw cap, remove tamper seal, replace cap securely.

Storage Instructions

Store in a cool dry place out of direct sunlight.

Storage Instructions After Opening

After opening, store at room temperature. Once opened, use within 3 months.

Shelf Life from Time of Production	730 Days	Exempt From Shelf Life Labelling	No
Shelf Life From Opening	93 Days		

ACCREDITATIONS/
CERTIFICATIONS/
ASSURANCE
SCHEMES
ORIGIN

BRCGS Certified	BRCGS Food Safety
Sedex	The Vegan Society

Product Country of Origin/Place of United Kingdom

Provenance

Additional Origin Details

Made in UK

PRODUCT
CHARACTERISTICS

Standards Testing

	Do you undertake trend analysis of microbiological results?	No	Is shelf life testing undertaken?	No			
	Microbiological Standards						
	Organism	Description	Frequency	Target	Maximum	Sample (g or ml)	
	Enterobacteriaceae (cfu/g or ml)	cfu/ml	Every Batch	<1	1	150	
	Yeast (cfu/g or ml)	cfu/ml	Every Batch	<2	2	150	
	Moulds (cfu/g or ml)	cfu/ml	Every Batch	<2	2	150	
	Aerobic Colony Count (ACC) (cfu/g or ml)	cfu/ml	Every Batch	<1	10	150	
	Analytical Standards						
	Test	Description	Frequency	Target	Range	Sample (g or ml)	
	pH		Every Batch	<3.8	3.3 to 3.8	50	
	Brix (°Bx)		Every Batch	<37	30 to 37	25	
	Specific Gravity	g/cm3	Every Batch	<1.20	1.10 to 1.20	100	
	ORGANOLEPTICS						
	Appearance	dark brown dense liquid					
	Aroma	on the nose: complex acetic fragrance with certain sweetness					
	Taste	on the palate: sour-sweet taste, good equilibrated and savoury with velvety nuances					
	Texture	dense liquid					
CONFIGURATION	Case Configuration			Inner Pack Configuration			
	Total Quantity of Inner Components in Outer Case	6 Units					
PRODUCT WEIGHTS	Inner Component						
	Variable Weight Consumer Item	No					
	Inner Component Volume	500 ml					
	Outer Case						
	Outer Case Gross Weight	4.15 kg					
	Outer Case Net Weight	3.5 kg					
PRODUCT DIMENSIONS	Inner Component						
	Inner Component Depth	60 mm					
	Inner Component Width	60 mm					
	Inner Component Height	213 mm					
	Outer Case						
	Outer Case Depth	205 mm					
	Outer Case Width	137 mm					
	Outer Case Height	232 mm					
PALLET INFORMATION	Quantity of Cases Per Pallet Layer	40 Cases	Pallet Height	1.07 MTR			
	Quantity of Layers Per Pallet	4 Layers	Pallet Gross Weight	664.78 kg			
	Quantity of Cases Per Pallet	160 Cases					
PACKAGING	Inner Component Packaging						
	Type	Materials	Weight	Recycled Plastic %	Recyclable	Returnable	Composite
	Bottle	Plastic	154 g	100.00 %			

Outer Case Packaging

Type	Materials	Weight	Recycled Plastic %	Recyclable	Returnable	Composite
Case	Paper/Cardboard	134 g	- %			

Transport Packaging

Type	Materials	Weight	Recycled Plastic %	Recyclable	Returnable	Composite
Other	Plastic	924 g	100.00 %			

OTHER INFORMATION

Commodity Code 2103909089

CONTACT INFORMATION

Address

Gourmet Classic
 Unit 14, Endeavour Business Park
 Crow Arch Lane
 Ringwood
 Hampshire
 BH24 1SF
 England

P: (Phone) 01202 863040

The information on the [Erudus System](#) has been supplied by the manufacturers of the products and, whilst the owners of the Erudus System take steps to ensure the information is regularly updated, they give no warranty and no guarantee that the information is accurate. Product information and ingredients may change, please always read product labels carefully in addition to using the information provided by Erudus.

We do not accept liability for any inaccuracies or incorrect information contained on this site.
 Please visit <http://www.erudus.com/terms-and-conditions> for full terms and conditions.