


Changed Jan 25, 2024 00:00

Reviewed Jan 24, 2024 09:11

Erudus ID 7769be84f6dd40469418a05393d5296b

Version 2.0



RECEIVED
Thomas Ridley QC Dept.
12:36 pm, 25 Jan 2024

The food information supplied by Thomas Ridley Foodservice has been provided by the respective product manufacturer. Whilst we use reasonable endeavours to check this information and ensure its accuracy, we do not give any warranty (whether express or implied), guarantee or representation that it is true, accurate or complete in any respect.

As product information, ingredients, nutritional guides and dietary or allergy advice may change from time to time, we recommend that you always carefully read the product label prior to using or consuming any such products. You should not solely rely upon the information we provide and make your own assessment as to the suitability or otherwise of any given product.



FB Jumbo Sausage Roll (35 x 150g)

Sausage Roll

PRODUCT DESCRIPTION

Savoury pork sausage filling encased in an oblong light puff pastry - Frozen baked

Brand	Wrights Food Group
Manufacturer Product Code	2823
Manufacturer Version	2.0
Number	
Effective Date	Jan 24, 2024
Product Type	Food
Product Category	Pies, Sausage Rolls, Savouries
Storage Type	Frozen
Erudus ID	7769be84f6dd40469418a05393d5296b
Specification Type	Bakery Products
Outer Case GTIN	05018833028233



INGREDIENTS

Ingredient Declaration

WHEAT Flour, Water, Pork (20%), Margarine [Palm Oil, Palm Stearin, Rapeseed Oil, Water, Salt, Emulsifier (E471), Lemon Juice, Acidity Regulator (E330)], Rusk [**WHEAT** Flour, Water, Salt, E503ii], Pork Fat, **WHEAT** Starch, Seasoning [Salt, Spices (White Pepper, Nutmeg, Ginger, Mace, Black Pepper, Coriander), Sugar, Emulsifier (E450i,iii), Flavour Enhancer (E621), **WHEAT** Flour, Preservative (Sodium **METABISULPHITE**), Onion Powder, Rusk (**WHEAT** Flour, Salt, Raising Agent (E503ii)), Dextrose, Antioxidants (E301, E304, E307), Rapeseed Oil, Spice Extracts, Colour (E120), Herb Extracts], Glaze [Water, Modified Starch (Potato, Tapioca), Rapeseed Oil, **MILK** Proteins, Emulsifiers (**SOYA** Lecithin, E471), Acidity Regulator (E339iii), Colour (E160a)], Pea Starch, Salt.

ALLERGENS

Product Contains:

Celery/Celeriac	No	Mustard	No
Cereals Containing Gluten	Yes	Nuts (Tree)	No
Barley	No	Almond nuts	No
Oats	No	Brazil nuts	No
Rye	No	Cashew nuts	No
Wheat (including Spelt and Khorasan)	Yes	Hazelnuts	No
Crustacea	No	Macadamia (Queensland) nuts	No
Eggs	No	Pecan nuts	No
Fish	No	Pistachio nuts	No
Lupin	No	Walnuts	No
Milk	Yes	Peanuts	No
Molluscs	No	Sesame Seeds	No
		Soybeans	Yes
		Sulphur Dioxide and Sulphites	Yes

Additional Allergen Information

Wheat Flour contains Calcium carbonate, Iron, Niacin and Thiamin. Allergens: For allergens (including cereals containing gluten) see ingredients in UPPER CASE. Warning: Although every care has been taken to remove bones, small bones may remain.

SUPPLEMENTARY
INGREDIENT
INFORMATION

Palm Oil	Yes
Hydrogenated Vegetable Oil/Fat	No
GM Protein/DNA	No

ADDITIVES

Product Contains:

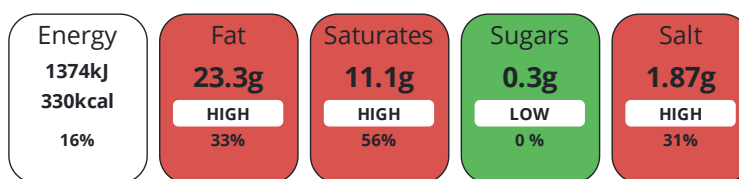
Artificial Antioxidants	Yes	Artificial Flavourings	Yes
Artificial Colours	No	Artificial Preservatives	Yes
Artificial Flavour Enhancers	Yes	Artificial Sweeteners	No

DIET
SUITABILITY

Vegan Diet	No	Vegetarian Diet	No
Halal Diet	No	Kosher Diet	No

NUTRITIONAL
INFORMATION

Each 100g/ml portion contains:



of your reference intake.

Typical values per 100g/ml : Energy 330kcal / 1374kj

Nutrient	per 100g	RI per 100g	per 150g serving	RI per 150g serving
Energy (kJ)	1374 kJ	16%	2061 kJ	25%
Energy (kcal)	330 kcal	17%	495 kcal	25%
Fat	23.3 g	33%	35 g	50%
of which Saturates	11.1 g	56%	16.7 g	84%
Carbohydrate	23.3 g	9%	35 g	13%
of which Sugars	0.3 g	0%	0.5 g	1%
Fibre	1.4 g		2.1 g	
Protein	6.2 g	12%	9.3 g	19%
Salt	1.87 g	31%	2.8 g	47%
Serving Size	150 g			

SUPPLEMENTARY
NUTRITIONAL
INFORMATION

HANDLING &
STORAGE
INFORMATION

Directions For Use

Defrost in temperature controlled conditions or overnight in a refrigerator. Place on a baking tray in a pre-heated oven at 200°C / 400°F / Gas Mark 6 for approximately 15 / 20 minutes. Ensure product is piping hot throughout before serving.

Storage Instructions

Store below -18°C. Once defrosted DO NOT re-freeze. Handle with care.

Shelf Life from Time of Production	547 Days	Exempt From Shelf Life Labelling	No
---	----------	---	----

ACCREDITATIONS/
CERTIFICATIONS/
ASSURANCE
SCHEMES



Other Accreditation

Nutrition is calculated

ORIGIN	Product Country of Origin/Place of Provenance	United Kingdom				
PRODUCT CHARACTERISTICS	Additional Origin Details	Pork from the ROI and EU.				
	Standards Testing	Standards Testing				
	Do you undertake trend analysis of microbiological results?	No	Is shelf life testing undertaken?	No		
	Microbiological Standards	Microbiological Standards				
	Organism	Description	Frequency	Target	Maximum	Sample (g or ml)
	Total Viable Count (TVC) (cfu/g or ml)		Annually	<100	5000	100
	Enterobacteriaceae (cfu/g or ml)		Annually	<10	100	100
	E. Coli (cfu/g or ml)		Annually	<10	100	100
	Salmonella (cfu/g or ml)	Absent in 25g	Annually	<0	0	25
	Listeria SPP (cfu/g or ml)	Absent in 25g	Annually	<0	0	25
Bacillus Cereus (cfu/g or ml)		Annually	<50	100	100	
Staphylococcus Aureus (cfu/g or ml)		Annually	<50	100	100	
Yeast (cfu/g or ml)		Annually	<1000	10000	100	
Moulds (cfu/g or ml)		Annually	<20	100	100	
CONFIGURATION	Case Configuration	Inner Pack Configuration				
	Total Quantity of Inner Components in Outer Case	35 Units				
	Is the Outer Case Splittable?	No				
PRODUCT WEIGHTS	Inner Component	Inner Component				
	Variable Weight Consumer Item	Yes				
	Outer Case	Outer Case				
	Outer Case Gross Weight	5.63 kg				
	Outer Case Net Weight	5.25 kg				
PRODUCT DIMENSIONS	Inner Component	Inner Component				
	Inner Component Depth	0 mm				
	Inner Component Width	0 mm				
	Inner Component Height	0 mm				
	Outer Case	Outer Case				
	Outer Case Depth	376 mm				
	Outer Case Width	256 mm				
	Outer Case Height	190 mm				
PALLET INFORMATION	Quantity of Cases Per Pallet Layer	12 Cases	Pallet Height	1.3 MTR		
	Quantity of Layers Per Pallet	6 Layers	Pallet Gross Weight	435.2 kg		
	Quantity of Cases Per Pallet	72 Cases				

PACKAGING

Outer Case Packaging

Type	Materials	Weight	Recycled Plastic %	Recyclable	Returnable	Composite
Case	Plastic	18 g	- %			
Case	Paper/Cardboard	374 g	- %			
Case	Other	5 g	- %			

Transport Packaging

Type	Materials	Weight	Recycled Plastic %	Recyclable	Returnable	Composite
Other	Plastic	240 g	- %		Yes	
Other	Paper/Cardboard	386 g	- %		Yes	
Other	Wood	28000 g	- %		Yes	

OTHER INFORMATION

Identification/Health Marks GB AX028

CONTACT INFORMATION

Address
 Wrights Food Group
 Weston Road
 Crewe
 Cheshire
 CW1 6XQ
 England

Technical Contact
 Nick Gollins
 Head of Technical
 nick.gollins@compleatfood.com

P. (Phone) 01270 504300

P. (Phone) 01270 504300

The information on the [Erudus System](#) has been supplied by the manufacturers of the products and, whilst the owners of the Erudus System take steps to ensure the information is regularly updated, they give no warranty and no guarantee that the information is accurate. Product information and ingredients may change, please always read product labels carefully in addition to using the information provided by Erudus.

We do not accept liability for any inaccuracies or incorrect information contained on this site. Please visit <http://www.erudus.com/terms-and-conditions> for full terms and conditions.