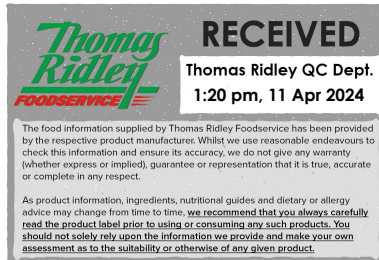


Changed Apr 09, 2024 08:15

Reviewed Apr 09, 2024 08:15

Erudus ID 990149817cfe433fb826ffb794211495

Version 2.0



Thomas Ridley QC Dept.
1:20 pm, 11 Apr 2024

The food information supplied by Thomas Ridley Foodservice has been provided by the respective product manufacturer. Whilst we use reasonable endeavours to check this information and ensure its accuracy, we do not give any warranty (whether express or implied), guarantee or representation that it is true, accurate or complete in any respect.

As product information, ingredients, nutritional guides and dietary or allergy advice may change from time to time, we recommend that you always carefully read the product label prior to using or consuming any such products. You should not solely rely upon the information we provide and make your own assessment as to the suitability or otherwise of any given product.



71039

Baker & Baker Tiffin Tray Bake (20 x 90g portions)

Tiffin Tray Bake

PRODUCT DESCRIPTION

Crushed biscuit and sultanas bound with a chocolate fudgy coating. To make it more indulgent, we've added a further layer of milk chocolate. 2 x 10 portion trays per pack.

Brand	Baker & Baker Products UK Ltd
Manufacturer Product Code	10186373
Product Type	Food
Product Category	Cookies, Muffins & Doughnuts
Storage Type	Frozen
Erudus ID	990149817cfe433fb826ffb794211495
Specification Type	Bakery Products



Outer Case GTIN 5014951900758



INGREDIENTS

Ingredient Declaration

Digestive Biscuit (37%) (Wheat flour (**Wheat** flour, Calcium Carbonate, Iron, Niacin, Thiamin), Whole **wheat** flour, Vegetable oils (Palm, Rapeseed), Sugar, Invert sugar syrup, Raising agent (Sodium carbonates, Ammonium carbonate), Salt), Whole milk chocolate (20%)(Sugar, Cocoa butter, Whole **milk** powder, Cocoa mass, Emulsifier (**Soya** lecithin), Flavouring), Margarine (Vegetable fats (Palm, Coconut), Rapeseed oil, Water, Emulsifier (Mono- and diglycerides of fatty acids), Flavouring), Chocolate flavour coating (10%)(Sugar, Palm fat, Whey powder (**Milk**), Fat reduced cocoa powder, Wheat flour (**Wheat** flour, Calcium Carbonate, Iron, Niacin, Thiamin),Emulsifier (**Soya** lecithin, Polyglycerol polyricinoleate), Flavouring), Dried fruits (8,7%) (Sultanas, Raisins, Partially inverted sugar syrup, Sunflower oil).

ALLERGENS

Product Contains:

Celery/Celeriac	No	Mustard	No
Cereals Containing Gluten	Yes	Nuts (Tree)	May Contain
Barley	May Contain	Almond nuts	May Contain
Oats	May Contain	Brazil nuts	No
Rye	No	Cashew nuts	No
Wheat (including Spelt and Khorasan)	Yes	Hazelnuts	May Contain
Crustacea	No	Macadamia (Queensland) nuts	No
Eggs	No	Pecan nuts	May Contain
Fish	No	Pistachio nuts	No
Lupin	No	Walnuts	No
Milk	Yes	Peanuts	No
Molluscs	No	Sesame Seeds	No
		Soybeans	Yes
		Sulphur Dioxide and Sulphites	No

Risk Source:

Barley (Risk Source)	Factory	Oats (Risk Source)	Factory
Tree Nuts (Risk Source)	Factory	Almond nuts (Risk Source)	Factory
Hazelnuts (Risk Source)	Factory	Pecan nuts (Risk Source)	Factory

Additional Allergen Information

May contain Nuts

SUPPLEMENTARY
INGREDIENT
INFORMATION

Palm Oil	Yes
Hydrogenated Vegetable Oil/Fat	No
GM Protein/DNA	No

ADDITIVES

Product Contains:

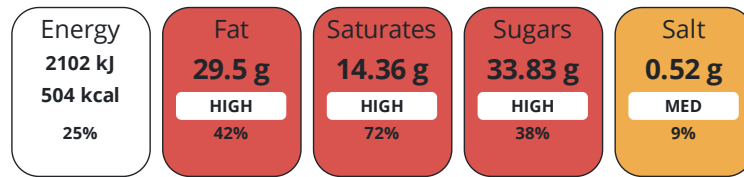
Artificial Antioxidants	No	Artificial Flavourings	No
Artificial Colours	No	Artificial Preservatives	No
Artificial Flavour Enhancers	No	Artificial Sweeteners	No

DIET
SUITABILITY

Vegan Diet	No	Vegetarian Diet	Suitable for
Halal Diet	No	Kosher Diet	No

NUTRITIONAL
INFORMATION

Each 100g/ml portion contains:



of your reference intake.

Typical values per 100g/ml : Energy 504kcal / 2102kj

Nutrient	per 100g	RI per 100g	per 90g serving	RI per 90g serving
Energy (kJ)	2102 kJ	25%	1891.8 kJ	23%
Energy (kcal)	504 kcal	25%	453.6 kcal	23%
Fat	29.5 g	42%	26.6 g	38%
of which Saturates	14.36 g	72%	12.9 g	65%
of which Mono-unsaturates	10.98 g		9.9 g	
of which Polyunsaturates	3.48 g		3.1 g	
Carbohydrate	53.23 g	20%	47.9 g	18%
of which Sugars	33.83 g	38%	30.4 g	34%
Fibre	2.7 g		2.4 g	
Protein	4.84 g	10%	4.4 g	9%
Salt	0.52 g	9%	0.5 g	8%
Sodium	206.3 mg		185.7 mg	

Serving Size	90 g
---------------------	------

SUPPLEMENTARY
NUTRITIONAL
INFORMATION

Trans Fats per 100 g/ml	0.19 g
--------------------------------	--------

HFSS (HIGH IN
FAT, SALT AND
SUGAR)

HFSS Status	Yes
--------------------	-----

HANDLING &
STORAGE
INFORMATION

Directions For Use

Thaw and serve.

Storage Instructions

Frozen, Defrost thoroughly before serving, After thawing, do not refreeze. < -18 °C

Shelf Life from Time of Production 366 Days **Exempt From Shelf Life Labelling** No

ACCREDITATIONS/
CERTIFICATIONS/
ASSURANCE
SCHEMES
ORIGIN

BRCGS Certified

Other Accreditation

Roundtable of Sustainable Palm Oil (RSPO)

Product Country of Origin/Place of United Kingdom

Provenance

Additional Origin Details

Packed in UK

PRODUCT
CHARACTERISTICS

Standards Testing

Do you undertake trend analysis of microbiological results? Yes **Is shelf life testing undertaken?** No

Microbiological Standards

Organism	Description	Frequency	Target	Maximum	Sample (g or ml)
E. Coli (cfu/g or ml)		Occasionally	<10	10	1
Staphylococcus Aureus (cfu/g or ml)		Occasionally	<20	20	1
Total Viable Count (TVC) (cfu/g or ml)		Occasionally	<1000	1000	1
Salmonella (cfu/g or ml)		Occasionally	<0	0	25
Yeast (cfu/g or ml)		Occasionally	<100	100	1
Moulds (cfu/g or ml)		Occasionally	<100	100	1

CONFIGURATION

Case Configuration

Inner Pack Configuration

Total Quantity of Inner Components in 20 Units

Outer Case

Is the Outer Case Splittable? No

PRODUCT
WEIGHTS

Inner Component

Variable Weight Consumer Item Yes

Outer Case

Outer Case Gross Weight 2 kg

Outer Case Net Weight 1.8 kg

PRODUCT
DIMENSIONS

Inner Component

Inner Component Depth 180 mm

Inner Component Width 275 mm

Inner Component Height 25 mm

Outer Case

Outer Case Depth 385 mm

Outer Case Width 326 mm

Outer Case Height 51 mm

PALLET
INFORMATION

Quantity of Cases Per Pallet Layer 9 Cases **Pallet Height** 0.9 MTR

Quantity of Layers Per Pallet 15 Layers **Pallet Gross Weight** 295 kg

Quantity of Cases Per Pallet 135 Cases

PACKAGING

Inner Component Packaging

Type	Materials	Weight	Recycled Plastic %	Recyclable	Returnable	Composite
Box	Plastic	2.4 g	- %			
Box	Paper/Cardboard	15.5 g	- %			

Outer Case Packaging

Type	Materials	Weight	Recycled Plastic %	Recyclable	Returnable	Composite
Case	Plastic	86.18 g	- %			
Case	Paper/Cardboard	1760 g	- %			

Transport Packaging

Type	Materials	Weight	Recycled Plastic %	Recyclable	Returnable	Composite
Other	Plastic	150 g	- %		Yes	
Other	Wood	25000 g	- %		Yes	

OTHER INFORMATION

Intrastat/Taric Code	1905311900
Commodity Code	7007

CONTACT INFORMATION

Address

Baker & Baker Products UK Ltd
 Stadium Road
 Bromborough
 Wirral
 Merseyside
 CH62 3NU
 England

P: (Phone) T +44 1513433437• F +44 1513461334

The information on the [Erudus System](#) has been supplied by the manufacturers of the products and, whilst the owners of the Erudus System take steps to ensure the information is regularly updated, they give no warranty and no guarantee that the information is accurate. Product information and ingredients may change, please always read product labels carefully in addition to using the information provided by Erudus.

We do not accept liability for any inaccuracies or incorrect information contained on this site.
 Please visit <http://www.erudus.com/terms-and-conditions> for full terms and conditions.