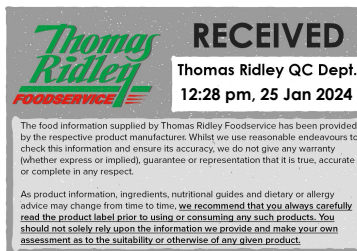


Changed Jan 25, 2024 00:00

Reviewed Jan 24, 2024 10:16

Erudus ID f3fbd7a2dd7c40679ef510161ef0fc16

Version 2.0



# Dinky Pork Pies 64 x 75g

Dinky Pork Pies 64 X 75g

## PRODUCT DESCRIPTION

A pastry case filled with coarsely chopped and seasoned pork with added water, pork fat and rusk - Frozen Baked. (Silver Foil)

Brand	Wrights Food Group
Manufacturer Product Code	2312
Manufacturer Version	2.0
Number	
Effective Date	Jul 21, 2020
Product Type	Food
Product Category	Pies, Sausage Rolls, Savouries
Storage Type	Frozen
Erudus ID	f3fbd7a2dd7c40679ef510161ef0fc16
Specification Type	Bakery Products
Outer Case GTIN	05018833023122



## INGREDIENTS

### Ingredient Declaration

Pork (33%), **WHEAT** Flour, Pork Fat (17%), Water, Rusk [**WHEAT** Flour, Salt, Raising Agent (E503ii)], Glaze [Water, Modified Starch (Potato, Tapioca), Rapeseed Oil, **MILK** Proteins, Emulsifiers (**SOYA** Lecithin, E471), Acidity Regulator (E339iii), Colour (E160a)], Seasoning [Spices (Pepper, Nutmeg, Mace), Salt, Rusk (**WHEAT** Flour, Salt, Raising Agent (E503ii)), **WHEAT** Flour, Flavour Enhancer (E621), Emulsifier (E451), Bouillon (Salt, Maltodextrin, Yeast Extract, Potato Starch, Palm Oil, Natural Flavouring, Dextrose, Garlic Powder, Spices, Herb, Herb Extract)], Potato Starch, Cure Mix [Salt, Preservative (E250)], Salt.

**Wheat** flour contains (**Wheat** flour, calcium carbonate, Iron, Niacin, Thiamin).

## ALLERGENS

Product Contains:

<b>Celery/Celery</b>	No	<b>Mustard</b>	No
<b>Cereals Containing Gluten</b>	Yes	<b>Nuts (Tree)</b>	No
<b>Barley</b>	No	<b>Almond nuts</b>	No
<b>Oats</b>	No	<b>Brazil nuts</b>	No
<b>Rye</b>	No	<b>Cashew nuts</b>	No
<b>Wheat (including Spelt and Khorasan)</b>	Yes	<b>Hazelnuts</b>	No
<b>Crustacea</b>	No	<b>Macadamia (Queensland) nuts</b>	No
<b>Eggs</b>	No	<b>Pecan nuts</b>	No
<b>Fish</b>	No	<b>Pistachio nuts</b>	No
<b>Lupin</b>	No	<b>Walnuts</b>	No
<b>Milk</b>	Yes	<b>Peanuts</b>	No
<b>Molluscs</b>	No	<b>Sesame Seeds</b>	No
		<b>Soybeans</b>	Yes
		<b>Sulphur Dioxide and Sulphites</b>	No

### Additional Allergen Information

Wheat Flour contains Calcium Carbonate, Iron, Niacin and Thiamin. Allergens: For allergens (including cereals containing gluten) see ingredients in UPPER CASE. N.B. Although every care has been taken to remove bones, small bones may remain.

#### SUPPLEMENTARY INGREDIENT INFORMATION

<b>Palm Oil</b>	Yes
<b>Hydrogenated Vegetable Oil/Fat</b>	No
<b>GM Protein/DNA</b>	No

#### ADDITIVES

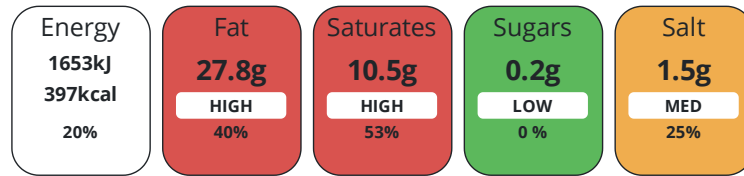
Product Contains:

<b>Artificial Antioxidants</b>	No	<b>Artificial Flavourings</b>	No
<b>Artificial Colours</b>	No	<b>Artificial Preservatives</b>	No
<b>Artificial Flavour Enhancers</b>	Yes	<b>Artificial Sweeteners</b>	No
<b>Vegan Diet</b>	No	<b>Vegetarian Diet</b>	No
<b>Halal Diet</b>	No	<b>Kosher Diet</b>	No

#### DIET SUITABILITY

#### NUTRITIONAL INFORMATION

Each 100g/ml portion contains:



of your reference intake.

Typical values per 100g/ml : Energy 397kcal / 1653kJ

Nutrient	per 100g	RI per 100g	per 75g serving	RI per 75g serving
<b>Energy (kJ)</b>	1653 kJ	20%	1239.8 kJ	15%
<b>Energy (kcal)</b>	397 kcal	20%	297.8 kcal	15%
<b>Fat</b>	27.8 g	40%	20.9 g	30%
<b>of which Saturates</b>	10.5 g	53%	7.9 g	40%
<b>Carbohydrate</b>	27.2 g	10%	20.4 g	8%
<b>of which Sugars</b>	0.2 g	0%	0.2 g	0%
<b>Fibre</b>	1.5 g		1.1 g	
<b>Protein</b>	8.8 g	18%	6.6 g	13%
<b>Salt</b>	1.5 g	25%	1.1 g	18%

**Serving Size** 75 g

#### SUPPLEMENTARY NUTRITIONAL INFORMATION

#### HANDLING & STORAGE INFORMATION

#### Directions For Use

Defrosting Instructions: Defrost in temperature controlled conditions (e.g. overnight in a refrigerator). Do not refreeze once defrosted.

#### Storage Instructions

: Store below -18°C. Once defrosted DO NOT re-freeze. Handle with care.

<b>Shelf Life from Time of Production</b>	547 Days	<b>Exempt From Shelf Life Labelling</b>	No
---	----------	---	----

ORIGIN	<b>Product Country of Origin/Place of</b> United Kingdom						
	<b>Provenance</b>						
PRODUCT CHARACTERISTICS	<b>Additional Origin Details</b>						
	Produced in the UK using Pork from UK and EU.						
	Standards Testing						
	Microbiological Standards						
	<b>Organism</b>	<b>Description</b>	<b>Frequency</b>	<b>Target</b>	<b>Maximum</b>	<b>Sample (g or ml)</b>	
	Total Viable Count (TVC) (cfu/g or ml)		Annually	<100	5000	100	
	Enterobacteriaceae (cfu/g or ml)		Annually	<10	100	100	
	E. Coli (cfu/g or ml)		Annually	<10	100	100	
	Salmonella (cfu/g or ml)		Annually	<0	0	25	
	Listeria SPP (cfu/g or ml)		Annually	<0	0	25	
Bacillus Cereus (cfu/g or ml)		Annually	<50	100	100		
Staphylococcus Aureus (cfu/g or ml)		Annually	<50	100	100		
CONFIGURATION	Case Configuration		Inner Pack Configuration				
	<b>Total Quantity of Inner Components in Outer Case</b>	64 Units					
	<b>Is the Outer Case Splittable?</b>	No					
PRODUCT WEIGHTS	Inner Component						
	<b>Variable Weight Consumer Item</b>	Yes					
	Outer Case						
	<b>Outer Case Gross Weight</b>	5.33 kg					
	<b>Outer Case Net Weight</b>	4.8 kg					
PRODUCT DIMENSIONS	Inner Component						
	<b>Inner Component Depth</b>	60 mm					
	<b>Inner Component Width</b>	50 mm					
	<b>Inner Component Height</b>	30 mm					
	Outer Case						
	<b>Outer Case Depth</b>	362 mm					
	<b>Outer Case Width</b>	286 mm					
	<b>Outer Case Height</b>	200 mm					
	PALLET INFORMATION	<b>Quantity of Cases Per Pallet Layer</b>	12 Cases	<b>Pallet Height</b>		1.4 MTR	
		<b>Quantity of Layers Per Pallet</b>	6 Layers	<b>Pallet Gross Weight</b>		412 kg	
<b>Quantity of Cases Per Pallet</b>		72 Cases					
Inner Component Packaging							
PACKAGING	<b>Type</b>	<b>Materials</b>	<b>Weight</b>	<b>Recycled Plastic %</b>	<b>Recyclable</b>	<b>Returnable</b>	<b>Composite</b>
	Other	Aluminium	1.79 g	- %			

Outer Case Packaging

Type	Materials	Weight	Recycled Plastic %	Recyclable	Returnable	Composite
Case	Plastic	20 g	- %			
Case	Paper/Cardboard	380 g	- %			

Transport Packaging

Type	Materials	Weight	Recycled Plastic %	Recyclable	Returnable	Composite
Other	Plastic	240 g	- %			
Other	Paper/Cardboard	436 g	- %			
Other	Wood	28000 g	- %			

OTHER INFORMATION

Identification/Health Marks

UK AX028 EC

**Manufacturer Comments**

Specification and label updated 21.07.20 - ingredient dec and nutrition reviewed and updated. Labels prior to 21.07.20 will match the previous version of the specification, product produced after 21.07.20 will match this version (Wright issue 9). 24/01/2024 - Spec review, no change to recipe product. The site is now nut free. For any specification queries please email [specifications@wrightsfsg.com](mailto:specifications@wrightsfsg.com)

CONTACT INFORMATION

Address

Wrights Food Group  
Weston Road  
Crewe  
Cheshire  
CW1 6XQ  
England

Technical Contact

Nick Gollins  
Head of Technical  
[nick.gollins@compleatfood.com](mailto:nick.gollins@compleatfood.com)

P: (Phone) 01270 504300

P: (Phone) 01270 504300

The information on the [Erudus System](#) has been supplied by the manufacturers of the products and, whilst the owners of the Erudus System take steps to ensure the information is regularly updated, they give no warranty and no guarantee that the information is accurate. Product information and ingredients may change, please always read product labels carefully in addition to using the information provided by Erudus.

We do not accept liability for any inaccuracies or incorrect information contained on this site. Please visit <http://www.erudus.com/terms-and-conditions> for full terms and conditions.