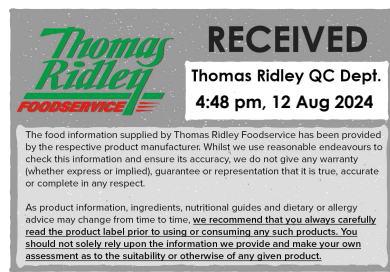


Changed Aug 12, 2024 13:47

Reviewed Aug 12, 2024 13:47

Erudus ID 06a3b00228cb4251a4f6bbdfaa634cd8

Version 2.0



72112

# MCCAIN ORIGINAL CHOICE THICK CUT CHIPS 4X 2.27KG

Original Choice Thick Cut Chips 4x2.28kg

## PRODUCT DESCRIPTION

9/16 Thick Straight Cut Chips

Brand	McCain Foods Ltd
Manufacturer Product Code	45056
Product Type	Food
Product Category	Potato Products
Storage Type	Frozen
Erudus ID	06a3b00228cb4251a4f6bbdfaa634cd8
Specification Type	Fruit and Vegetables



Inner Component GTIN	5010228050560
Outer Case GTIN	05010228450568



## INGREDIENTS

### Ingredient Declaration

Potatoes (97%) Vegetable Oils (Rapeseed, Sunflower) in varying proportions, Salt

## ALLERGENS

Product Contains:

<b>Celery/Celeriac</b>	No	<b>Mustard</b>	No
<b>Cereals Containing Gluten</b>	No	<b>Nuts (Tree)</b>	No
<b>Barley</b>	No	<b>Almond nuts</b>	No
<b>Oats</b>	No	<b>Brazil nuts</b>	No
<b>Rye</b>	No	<b>Cashew nuts</b>	No
<b>Wheat (including Spelt and Khorasan)</b>	No	<b>Hazelnuts</b>	No
<b>Crustacea</b>	No	<b>Macadamia (Queensland) nuts</b>	No
<b>Eggs</b>	No	<b>Pecan nuts</b>	No
<b>Fish</b>	No	<b>Pistachio nuts</b>	No
<b>Lupin</b>	No	<b>Walnuts</b>	No
<b>Milk</b>	No	<b>Peanuts</b>	No
<b>Molluscs</b>	No	<b>Sesame Seeds</b>	No
		<b>Soybeans</b>	No
		<b>Sulphur Dioxide and Sulphites</b>	No

## SUPPLEMENTARY INGREDIENT INFORMATION

<b>Palm Oil</b>	No
<b>Hydrogenated Vegetable Oil/Fat</b>	No
<b>GM Protein/DNA</b>	No

ADDITIVES

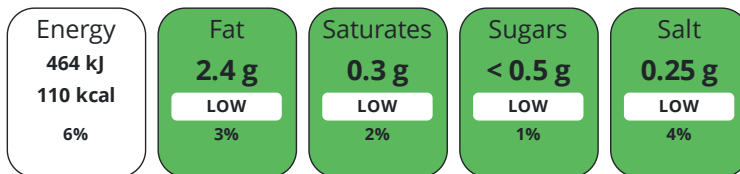
Product Contains:

<b>Artificial Antioxidants</b>	No	<b>Artificial Flavourings</b>	No
<b>Artificial Colours</b>	No	<b>Artificial Preservatives</b>	No
<b>Artificial Flavour Enhancers</b>	No	<b>Artificial Sweeteners</b>	No
<b>Vegan Diet</b>	Suitable for	<b>Vegetarian Diet</b>	Suitable for
<b>Halal Diet</b>	Suitable for	<b>Kosher Diet</b>	Suitable for

DIET SUITABILITY

NUTRITIONAL INFORMATION

Each 100g/ml portion contains:



of your reference intake.

Typical values per 100g/ml : Energy 110kcal / 464kJ

Nutrient	per 100g	RI per 100g	per 200g serving	RI per 200g serving
<b>Energy (kJ)</b>	464 kJ	6%	928 kJ	11%
<b>Energy (kcal)</b>	110 kcal	6%	220 kcal	11%
<b>Fat</b>	2.4 g	3%	4.8 g	7%
<b>of which Saturates</b>	0.3 g	2%	0.6 g	3%
<b>Carbohydrate</b>	20 g	8%	40 g	15%
<b>of which Sugars</b>	< 0.5 g	1%	1 g	1%
<b>Fibre</b>	1.7 g		3.4 g	
<b>Protein</b>	1.6 g	3%	3.2 g	6%
<b>Salt</b>	0.25 g	4%	0.5 g	8%
<b>Serving Size</b>	200 g			

SUPPLEMENTARY NUTRITIONAL INFORMATION

HANDLING & STORAGE INFORMATION

**Directions For Use**

45056 McCain Our Original Choice Thick Cut Cooking Guidelines: For best results cook from frozen. Deep Fry From frozen Deep Fry From chilled Temperature 175°C / 350°F 175°C / 350°F Time 2 - 3 minutes 1 ½ - 2 ½ minutes Do not overcook. Cooking directions based on 500g of product. For different quantities adjust cooking time accordingly. For all cook methods see [www.mccainfoodservice.co.uk/cookinginstructions](http://www.mccainfoodservice.co.uk/cookinginstructions) For best chip frying practice see [www.goodfries.eu](http://www.goodfries.eu)

**Storage Instructions**

Keep frozen at -18°C or below. Keep chilled at 0-4 oC for 5 days MAXIMUM from the date product is chilled IF THAWED DO NOT REFREEZE

**Shelf Life from Time of Production** 348 Days

ACCREDITATIONS/ CERTIFICATIONS/ ASSURANCE SCHEMES ORIGIN

**BRCGS Certified** **Red Tractor**

**Product Country of Origin/Place of** United Kingdom

**Provenance**

Standards Testing

PRODUCT CHARACTERISTICS

	<b>Do you undertake trend analysis of microbiological results?</b>	Yes	<b>Is shelf life testing undertaken?</b>	Yes			
CONFIGURATION	Case Configuration		Inner Pack Configuration				
	<b>Total Quantity of Inner Components in Outer Case</b>	4 Units					
	<b>Is the Outer Case Splittable?</b>	Yes					
PRODUCT WEIGHTS	Inner Component						
	<b>Variable Weight Consumer Item</b>	No					
	<b>Inner Component Weight</b>	2.28 kg					
	<b>Net Drained Weight</b>	2.27 kg					
	Outer Case						
	<b>Outer Case Gross Weight</b>	9.35 kg					
	<b>Outer Case Net Weight</b>	9.08 kg					
PRODUCT DIMENSIONS	Inner Component						
	<b>Inner Component Depth</b>	50 mm					
	<b>Inner Component Width</b>	340 mm					
	<b>Inner Component Height</b>	330 mm					
	Outer Case						
	<b>Outer Case Depth</b>	391 mm					
	<b>Outer Case Width</b>	290 mm					
	<b>Outer Case Height</b>	190 mm					
PALLET INFORMATION	<b>Quantity of Cases Per Pallet Layer</b>	8 Cases	<b>Pallet Type</b>	UK Standard Pallet			
	<b>Quantity of Layers Per Pallet</b>	10 Layers	<b>Pallet Height</b>	1.7 MTR			
	<b>Quantity of Cases Per Pallet</b>	80 Cases	<b>Pallet Gross Weight</b>	782.34 kg			
PACKAGING	Inner Component Packaging						
	<b>Type</b>	<b>Materials</b>	<b>Weight</b>	<b>Recycled Plastic %</b>	<b>Recyclable</b>	<b>Returnable</b>	<b>Composite</b>
	Paper/Polyethylene	Plastic	12.2 g	- %			
	Outer Case Packaging						
	<b>Type</b>	<b>Materials</b>	<b>Weight</b>	<b>Recycled Plastic %</b>	<b>Recyclable</b>	<b>Returnable</b>	<b>Composite</b>
	Case	Paper/Cardboard	297 g	- %			
OTHER INFORMATION CONTACT INFORMATION	Address						
	McCain Foods Ltd						
	McCain foods						
	Havers Hill						
	Scarborough						
	North Yorkshire						
	YO11 3BS						
	England						
	P: (Phone) 01723 584141						

The information on the [Erudus System](#) has been supplied by the manufacturers of the products and, whilst the owners of the Erudus System take steps to ensure the information is regularly updated, they give no warranty and no guarantee that the information is accurate. Product information and ingredients may change, please always read product labels carefully in addition to using the information provided by Erudus.

We do not accept liability for any inaccuracies or incorrect information contained on this site.  
Please visit <http://www.erudus.com/terms-and-conditions> for full terms and conditions.