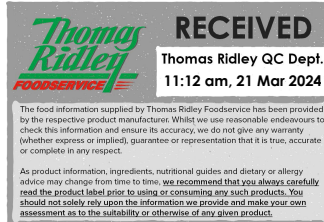


Changed Mar 20, 2024 16:22

Reviewed Mar 20, 2024 16:22

Erudus ID d4cc0829ea7b46ffa85ef85a6390e488

Version 2.1



73002

# Cooking Wine Cabernet Sauvignon 4.8% Vol. - 4 x 3L

Cooking Wine Cabernet Sauvignon

## PRODUCT DESCRIPTION

A blend of cabernet sauvignon and de-alcoholised wine from concentrate, lightly seasoned with salt.

Brand	Gourmet Classic
Manufacturer Product Code	7010-242
Product Type	Food
Product Category	Condiments
Storage Type	Ambient
Erudus ID	d4cc0829ea7b46ffa85ef85a6390e488
Specification Type	Generic
Inner Component GTIN	5036582000058
Outer Case GTIN	05036582003653



## INGREDIENTS

### Ingredient Declaration

De-alcoholised Wine from Concentrate, Cabernet Sauvignon (40%), Salt, Preservative (Potassium MetabiSULPHITE)

## ALLERGENS

Product Contains:

Celery/Celериac	No	Mustard	No
Cereals Containing Gluten	No	Nuts (Tree)	No
Barley	No	Almond nuts	No
Oats	No	Brazil nuts	No
Rye	No	Cashew nuts	No
Wheat (including Spelt and Khorasan)	No	Hazelnuts	No
Crustacea	No	Macadamia (Queensland) nuts	No
Eggs	No	Pecan nuts	No
Fish	No	Pistachio nuts	No
Lupin	No	Walnuts	No
Milk	No	Peanuts	No
Molluscs	No	Sesame Seeds	No
		Soybeans	No
		Sulphur Dioxide and Sulphites	Yes

### Additional Allergen Information

Contains Sulphites

## SUPPLEMENTARY INGREDIENT INFORMATION

Palm Oil	No	Alcoholic Strength %Vol (ABV)	4.8 % Vol
Hydrogenated Vegetable Oil/Fat	No		
GM Protein/DNA	No		

ADDITIVES

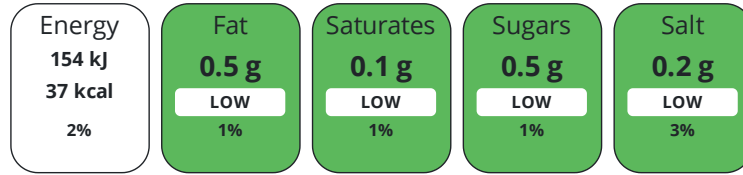
Product Contains:

<b>Artificial Antioxidants</b>	No	<b>Artificial Flavourings</b>	No
<b>Artificial Colours</b>	No	<b>Artificial Preservatives</b>	Yes
<b>Artificial Flavour Enhancers</b>	No	<b>Artificial Sweeteners</b>	No
<b>Vegan Diet</b>	Suitable for	<b>Vegetarian Diet</b>	Suitable for
<b>Halal Diet</b>	No	<b>Kosher Diet</b>	No

DIET  
SUITABILITY

NUTRITIONAL  
INFORMATION

Each 100g/ml portion contains:



of your reference intake.

Typical values per 100g/ml : Energy 37kcal / 154kj

Nutrient	per 100ml	RI per 100ml
<b>Energy (kJ)</b>	154 kJ	2%
<b>Energy (kcal)</b>	37 kcal	2%
<b>Fat</b>	< 0.5 g	1%
<b>of which Saturates</b>	< 0.1 g	1%
<b>Carbohydrate</b>	1.9 g	1%
<b>of which Sugars</b>	< 0.5 g	1%
<b>Fibre</b>	< 0.5 g	
<b>Protein</b>	< 0.5 g	1%
<b>Salt</b>	0.2 g	3%

**Source of Nutritional Information** Calculation from known/accepted datasets

SUPPLEMENTARY  
NUTRITIONAL  
INFORMATION

HANDLING &  
STORAGE  
INFORMATION

**Directions For Use**

Remove tamper-proof seal from packaging.

**Storage Instructions**

Store in a cool, dry place out of direct sunlight.

**Storage Instructions After Opening**

Keeps for up to 6 weeks after opening.

<b>Shelf Life from Time of Production</b>	730 Days	<b>Exempt From Shelf Life Labelling</b>	No
<b>Shelf Life From Opening</b>	42 Days		

ACCREDITATIONS/  
CERTIFICATIONS/  
ASSURANCE  
SCHEMES  
ORIGIN

<b>BRCGS Certified</b>	<b>BRCGS Food Safety</b>
<b>Sedex</b>	<b>The Vegan Society</b>

**Product Country of Origin/Place of** European Union, South Africa

**Provenance**

**Additional Origin Details**

Made in UK With wine from the EU

Standards Testing

PRODUCT  
CHARACTERISTICS

	<b>Do you undertake trend analysis of microbiological results?</b>	Yes	<b>Is shelf life testing undertaken?</b>	Yes			
	Microbiological Standards						
	<b>Organism</b>	<b>Description</b>	<b>Frequency</b>	<b>Target</b>	<b>Maximum</b>	<b>Sample (g or ml)</b>	
	Yeast (cfu/g or ml)	cfu	Every Batch	<2	2	150	
	Moulds (cfu/g or ml)	cfu	Every Batch	<2	2	150	
	Aerobic Colony Count (ACC) (cfu/g or ml)	cfu	Every Batch	<1	1	150	
	Analytical Standards						
	<b>Test</b>	<b>Description</b>	<b>Frequency</b>	<b>Target</b>	<b>Range</b>	<b>Sample (g or ml)</b>	
	pH		Every Batch	<3.8	3 to 3.8	50	
	Specific Gravity	g/cm3	Every Batch	=0.995	0.990 to 1.000	100	
	Salt Content (%)	g/100ml	Every Batch	=0.22	0.16 to 0.24	0.15	
	ORGANOLEPTICS						
	<b>Appearance</b>	deep red colour					
	<b>Aroma</b>	on the nose: cassis, fresh, peppers and vanilla					
	<b>Taste</b>	on the palate: full dark berries, strong in tannin and the goodness of the soil					
	<b>Texture</b>	liquid					
	HAZARD CONTROLS						
	<b>Filters</b>	Yes					
CONFIGURATION	Case Configuration	Inner Pack Configuration					
	<b>Total Quantity of Inner Components in Outer Case</b>	4 Units					
PRODUCT WEIGHTS	Inner Component						
	<b>Variable Weight Consumer Item</b>	Yes					
	Outer Case						
	<b>Outer Case Gross Weight</b>	13.08 kg					
	<b>Outer Case Net Weight</b>	12.36 kg					
PRODUCT DIMENSIONS	Inner Component						
	<b>Inner Component Depth</b>	168 mm					
	<b>Inner Component Width</b>	104 mm					
	<b>Inner Component Height</b>	212 mm					
	Outer Case						
	<b>Outer Case Depth</b>	336 mm					
	<b>Outer Case Width</b>	208 mm					
	<b>Outer Case Height</b>	212 mm					
PALLET INFORMATION	<b>Quantity of Cases Per Pallet Layer</b>	14 Cases	<b>Pallet Height</b>	1.22 MTR			
	<b>Quantity of Layers Per Pallet</b>	5 Layers	<b>Pallet Gross Weight</b>	916 kg			
	<b>Quantity of Cases Per Pallet</b>	70 Cases					
PACKAGING	Inner Component Packaging						
	<b>Type</b>	<b>Materials</b>	<b>Weight</b>	<b>Recycled Plastic %</b>	<b>Recyclable</b>	<b>Returnable</b>	<b>Composite</b>
	Bag	Plastic	35 g	- %			
	Bag	Paper/Cardboard	145 g	- %			

Outer Case Packaging

Type	Materials	Weight	Recycled Plastic %	Recyclable	Returnable	Composite
Case	Plastic	140 g	- %			
Case	Paper/Cardboard	580 g	- %			

Transport Packaging

Type	Materials	Weight	Recycled Plastic %	Recyclable	Returnable	Composite
Other	Plastic	10 g	- %			

OTHER  
INFORMATION  
CONTACT  
INFORMATION

Address

Gourmet Classic  
Unit 14, Endeavour Business Park  
Crow Arch Lane  
Ringwood  
Hampshire  
BH24 1SF  
England

P: (Phone) 01202 863040

The information on the [Erudus System](#) has been supplied by the manufacturers of the products and, whilst the owners of the Erudus System take steps to ensure the information is regularly updated, they give no warranty and no guarantee that the information is accurate. Product information and ingredients may change, please always read product labels carefully in addition to using the information provided by Erudus.

We do not accept liability for any inaccuracies or incorrect information contained on this site.  
Please visit <http://www.erudus.com/terms-and-conditions> for full terms and conditions.